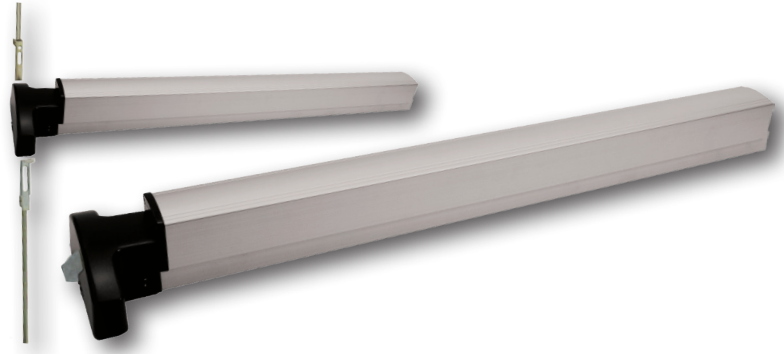


PD10-M-PTS

- **ELECTRIC MOTOR DRIVEN LATCH PULLBACK**
- **QUIET, FAST, SMART, & DURABLE**
- **EXACT RETROFIT FOR DOR-O-MATIC 1600/1700 OR FIRST CHOICE 3600/3700**
- **ANSI/BHMA A156.3 GRADE 1 UL NARROW STILE STOREFRONT RIM & CVR EXIT DEVICES**
- **TESTED TO 4 TIMES INDUSTRY STANDARD - RELIABLE & HIGH PERFORMANCE EXIT DEVICES**



The Command Access PD10-M series is a motorized latch pullback Grade 1 storefront exit device that retrofits First Choice 3600/3700 & Dor-o-matic 1600/1700 series. All PD10-M models are equipped with our PTS “push to set” technology. We know that door conditions change and in retrofit scenarios you never know exactly what you’re walking into. But with our 1 Touch PTS adjustment your post installation adjustment is a breeze. Install this device with the confidence of knowing that the PD10-M meets or exceeds the high standards of other grade 1 products and carries our 3-year “no hassle” warranty.

SPECIFICATIONS

VOLTAGE RANGE – 24 TO 28 VDC

SYSTEM PROTECTION – UNIT SHUTDOWN WHEN VOLTAGE EXCEEDS 28VDC

**STANDARD - AVERAGE CURRENT PEAK: 1.3A,
AVERAGE CURRENT HOLD: 180MA**

**HIGH TORQUE - AVERAGE CURRENT PEAK: 2A,
AVERAGE CURRENT HOLD: 250MA**

PTS ADJUSTMENT – APPROX. 1/4”

**WIRE RUN:
300’ with 18ga wire**

**PRODUCT DETAILS:
Single Box: 47” x 8-1/8” x 8-1/8”**

WEIGHT: RIM 13 lbs, CVR 17 lbs

**2 MASTER PACK:
Weight: RIM 26 lbs, CVR 34 lbs**

Dim: 12.75” x 11.75” x 11”

CUTDOWN DETAILS:

36” - 1-1/4”

48” - 1-1/4”

**For other sizes: Call in for bracket relocation to enable additional cutdown.*

FEATURES

- Next Generation MM5 Smart Module: On board diagnostics with audible feedback for adjustment and power issues
- “PTS”: 5 second electronic adjustment for easy post installation adjustment
- Electric dogging rated for continuous duty - Auto re-engage if push pad is pulled from dogged position
- Low Current Draw - Field switchable to a “Low Current” or “High Torque” mode
- Up to 300’ wire run with 2-18ga wire - Long wire runs provides installer with convenience of placing the Command locking hardware power supply in a centralized location; i.e. the same closet as the access control panel
- 6” cable with Robust Quick Molex Connect for MM5 module to 6’ Power Lead to easily connect to Power Supply
- UL listed
- 3 Year No Hassle Warranty

HARDWARE

- **Materials:** push bar made of extruded aluminium, anodized in finish specified.
- **Pushbar Length:** dimensioned for 36" and 48" doors. Consult factory if field cut is required for smaller size doors with latch pullback
- **Door Height (for CVR):** 7' standard; designate 8' or 9' optional height when ordering
- **Door thickness:** suits standard 1-3/4" thick aluminium, stile and rail doors
- **Stile Width:** Minimum 2" stile required. Fits medium and wide stile doors as well.
- **Stile Wall:** minimum 1/8" required for installation
- **Dogging:** Electronic Dogging is standard with motor technology – push bar stays retracted when dogged.
- **Fasteners:** all provided
- **Cylinders:** not provided. Install RIM cylinder by others.
- **Entry trim:** not available from Command Access. Consult factory for options

ACCESSORIES

- Request to Exit (PD10REXKIT-ED) - field installable kit or factory install
- Latchbolt Monitor (PD10LBMKIRT-ED) - field installable kit or factory install

HOW TO ORDER

PART #	EASY ORDER #		DESCRIPTION
PD10-M-RIMA	36"	70850	Complete RIM exit device, non-handed, motorized latch pullback, w/ electronic dogging. Aluminium finish
	48"	70854	
PD10-M-RIMD	36"	70852	Complete RIM exit device, non-handed, motorized latch pullback, w/ electronic dogging. Durotonic finish
	48"	79856	
PD10-M-CVRA	36"	70851	Complete CVR exit device, non-handed, motorized latch pullback, w/ electronic dogging. Aluminium finish
	48"	70855	
PD10-M-CVRD	36"	70853	Complete CVR exit device, non-handed, motorized latch pullback, w/ electronic dogging. Durotonic finish
	48"	70857	

Standard Door Width 36" or 48" & Height 84". Other sizes available at additional charge.

NEED A LOCKING HARDWARE POWER SUPPLY?

RECOMMENDED LOCKING HARDWARE POWER SUPPLIES:

- PS204/PS204B
- PS220/220B
- PS480B
- PS210
- PS440B

