

# 6300/6400 SERIES

## Wide Stile/Narrow Stile

Architectural Exit Device

Supplemental Pricing

\*Expires May, 31, 2022



# Table of Contents

<b>3</b>	<b>Introducing the 6300/6400 Series Architectural Exit Devices</b>
<b>4</b>	<b>How to Order Exit Device</b>
	6300/6400 Exit Devices
5	Rim Devices
8	Surface Vertical Rod Devices
12	Concealed Vertical Rod Devices
16	Mortise Device
19	Dummy Device
<b>21</b>	<b>Introducing the 6300/6400 Series Trims</b>
<b>22</b>	<b>How to Order Trims</b>
23	6N Narrow Stile Trim
24	6W Wide Stile Trim
25	6T Thumb Latch Trim
26	6P Pull Plate Trim
27	6G Grip Pull Trim
28	6S Sectional Trim
<b>29</b>	<b>Electrified Options</b>
<b>33</b>	<b>Electrified Options Pricing</b>
<b>34</b>	<b>9300 Mullion</b>

## Customer Support and Information



800.441.9692



help@pdqlocks.com



www.pdqlocks.com



www.youtube.com/user/PDQLocks

## Ordering

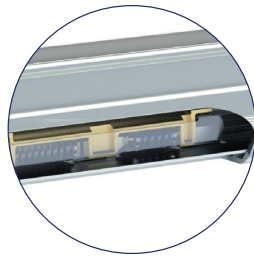
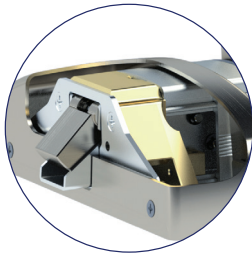
orders@pdqlocks.com

# Introducing the 6300/6400 SERIES Architectural Exit Device

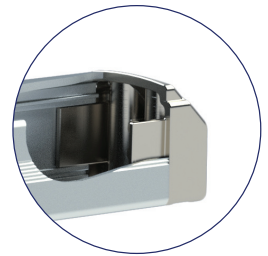
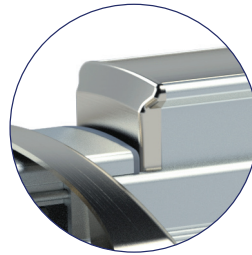


## Highlights

Chassis support is cast for high strength.



Push bar has angled ends and is nearly flush when dogged.



Flush end cap is standard, heavy duty engineered casting keys into the rail for ultimate pry resistance.

Cush spring quiets device in both directions. Compression spring returns the touch bar providing more reliability than a torsion type spring.

## Features

- Rugged, reliable, flexible, and simple design
- Designed & Assembled in Lancaster, PA
- Patent Pending
- Quiet operation - large heavy-duty spring cushion quiets both the compression/extension of the push bar
- Internal compression spring ensures long lasting push bar return
- Engineered strong and overbuilt for the most demanding environments
- Durable, heavy-duty flush end cap is standard and resist prying
- Stands up to cart abuse, heavy-duty flush end cap and tapered push bar designed to deflect hits and minimize damage

- Simple field door prep and installation
- Dogging holds bar in a retracted position nearly flush with head cover and rail
- Hex Key provided to lock and unlock the device
- No exposed screws on back of bar
- True 2-3/4" backset (with 5/8" frame stop and 1/8" door gap)
- Wood and machine screws included with each device
- Devices and trim are non-handed
- Ten (10) year warranty



**Rim**  
6300R / 6400R



**Surface Vertical Rod**  
6300V / 6400V



**Concealed Vertical Rod**  
6300C / 6400C



**Mortise**  
6300M

# 6300/6400 Exit Device

## How to Order

Series	For Door Width	Device Type	Rating	Finish	Options	Electrified Options
<b>63</b>	<b>00</b>	<b>R</b>	<b>--</b>	<b>630</b>	<b>--</b>	<b>--</b>
<b>63</b> - Wide Stile Device <b>64</b> - Narrow Stile Device	<b>00</b> - 36" Door <b>10</b> - 48" Door <b>20</b> - 24" Door	<b>R</b> - Rim Device <b>V</b> - SVR Device <b>C</b> - CVR Device <b>D</b> - Dummy Device <b>M</b> - Wide Stile Mortise Device*	<b>Blank</b> - Panic Rated <b>F</b> - Fire Rated	<b>613</b> - Dark Bronze <b>622</b> - Satin Black <b>626</b> - Satin Chrome <b>630</b> - Satin SS/ Anodized Alum	<b>Dogging</b> (Panic Rated Only): <b>Blank</b> - Hex Key Dogging <b>CD</b> - Cylinder Dogging <b>LD</b> - Less Dogging*  <b>Strikes:</b> <b>BS</b> - Blade Stop Strike (Rim) <b>DD</b> - Double Door Strike (Rim)  <b>LBR</b> - Less Bottom Rod (SVR/CVR) <b>LBR-FP</b> - Less Bottom Rod with Fire Pin (SVR/CVR) <b>WS</b> - Florida HVHZ (Rim) SVR Pending <b>EC</b> - End Cap Cover <b>TLA</b> - Head Cover <b>SNB</b> - Sex Nuts & Bolts <b>AM</b> - Anti-Microbial <b>SHS</b> - Security Head Screws  <b>7</b> - 7' door (default) <b>8</b> - 8' door <b>10</b> - 8'-10' Door	<b>MLR</b> - Motorized Latch Retr. <b>AL</b> - Alarm Kit* <b>SS</b> - Signal Switch on touch bar <b>LM</b> - Latchbolt Monitor <b>ISMC</b> - Industry Standard Molex Connector <b>ALHW</b> - Alarm kit hard wired

\*Mortise in wide stile device only

\*Multiple Selections Allowed  
 \*Dogging options only apply to Panic Rated

\*MLR can be combined with LM & SS  
 \*AL can be combined with LM  
 \*MLR and AL cannot be combined  
 \*ISMC available on all  
 \*AL - specify handing

## Cylinder Dogging Part Number Additions

CYLINDER TYPE	KEYWAY	KEYING	24" DEVICE
<b>D</b>	<b>SCC</b>	<b>KD</b>	No cut
<b>D</b> Default <b>L</b> Less Cylinder <b>SF6</b> Lock is SFIC prepped w/ 6 pin core <b>SF7</b> Lock is SFIC prepped w/ 7 pin core <b>SFL</b> Lock is SFIC prepped but less core <b>SFC</b> Lock is SFIC prepped w/ construction core <b>SFP</b> Lock is SFIC prepped w/ plastic construction core <b>LF6</b> Lock is Schlage LFIC prepped w/ Schlage core <b>LFL</b> Lock is Schlage LFIC prepped but less core <b>LFC</b> Lock is Schlage LFIC prepped w/ construction core  *Cores sold separately - option only specifies factory installation *Cylinder only needs to be specified for cylinder dogging	<b>SCC</b> – Schlage C <b>OTHERS</b> – See Keyway Table Page 22	<b>KD</b> – Keyed Different <b>KA</b> – Keyed Like <b>KO</b> – Zero Bitted <b>MK</b> – Master Keyed <b>CMK</b> – Construction Keyed <b>GMK</b> – Grand Master Keyed	No electric options

## Rim Devices

### 6300R Wide Stile/6400R Narrow Stile

#### Panic & Fire Rated

**6300R/RF** - Wide Stile Rim exit device with ¾" pullman latch. Use for wide stile single door applications or for double door applications with a mullion.

**6400R/RF** - Narrow Stile Rim exit device with ¾" pullman latch. Use for narrow stile single door applications or for double door applications with a mullion. Can also be used when a narrow look is desired.



#### Specifications

<b>Rail</b>	• Extruded aluminum • Specify 630F for full stainless surfaces (roll formed)
<b>Latch</b>	• Stainless steel dead locking with ¾" throw
<b>Hand</b>	• Device is non-handed • Trim is non-handed or field reversible
<b>Dogging</b>	• Hex key dogging standard • Cylinder dogging optional • Dogging not available for fire labeled devices
<b>Minimum Stile Width</b>	• See chart on optional strike page 9
<b>Door Thickness</b>	• 1-¾" - 2" (Consult factory for other)
<b>Door Width</b>	• 24", 36", 48" standard
<b>Door Height</b>	• Panic - Up to 10' • Fire - See fire ratings charts page 26
<b>Strike Options</b>	• Default roller • Blade stop • Double door • Windstorm/Fire Mullion - Panic Mullion uses standard roller strike
<b>Finishes</b>	• 605 - Polished Brass, 606 - Satin Brass, 613 - Dark Bronze, 622 - Flat Black, 626 - Satin Chrome, 630 - Satin Stainless Steel, 630F - Full Satin Stainless Surfaces • Optional Anti-Microbial Coating available on 626, 630 & 630F
<b>Fasteners</b>	• Includes machine and wood screws • SNB Optional
<b>Warranty</b>	• Ten (10) year limited warranty
<b>Electrified Options</b>	• Motorized Latch Retraction • Request to Exit/Signal Switch • Alarmed Exit • Latch Bolt Monitor • ISMC Connectors
<b>Certifications Compliances Listings</b>	• Listed for UL 305 "Panic", listed for UL 10C "Fire Exit Hardware" up to 3 hours. • Certified to ANSI/BHMA A156.3 Grade 1 • Approved for Florida HVHZ (High Velocity Hurricane Zone). +60/65psf • Complies with ADA (Americans with Disabilities Act) and ICC/ANSI 117.1 for Accessible and Usable Buildings • Meets requirements of the Buy American Act



# 6300/6400R Rim Exit Device

## How to Order

Series	For Door Width	Device Type	Rating	Finish	Options	Electrified Options
<b>63</b>	<b>00</b>	<b>R</b>	<b>--</b>	<b>630</b>	<b>--</b>	<b>--</b>
<b>63</b> - Wide Stile Device <b>64</b> - Narrow Stile Device	<b>00</b> - 36" Door <b>10</b> - 48" Door <b>20</b> - 24" Door	<b>R</b> - Rim Device	<b>Blank</b> - Panic Rated <b>F</b> - Fire Rated	<b>613</b> - Dark Bronze <b>622</b> - Satin Black <b>626</b> - Satin Chrome <b>630</b> - Satin SS/ Anodized Alum	<b>Dogging</b> (Panic Rated Only): <b>Blank</b> - Hex Key Dogging <b>CD</b> - Cylinder Dogging <b>LD</b> - Less Dogging*  <b>Strikes:</b> <b>BS</b> - Blade Stop Strike (Rim) <b>DD</b> - Double Door Strike (Rim)  <b>WS</b> - Florida HVHZ (Rim) <b>EC</b> - End Cap Cover <b>TLA</b> - Head Cover <b>SNB</b> - Sex Nuts & Bolts <b>AM</b> - Anti-Microbial <b>SK</b> - Shim Kit <b>SHS</b> - Security Head Screws	<b>MLR</b> - Motorized Latch Retr. <b>AL</b> - Alarm Kit* <b>SS</b> - Signal Switch on touch bar <b>LM</b> - Latchbolt Monitor <b>ISMC</b> - Industry Standard Molex Connector <b>ALHW</b> - Alarm kit hard wired

\*Multiple Selections Allowed  
 \*Dogging options only apply to Panic Rated  
 \*MLR can be combined with LM & SS  
 \*AL can be combined with LM  
 \*MLR and AL cannot be combined  
 \*ISMC available on all  
 \*AL - specify handing

## 6300R Rim Wide Stile Exit Devices

PART	DESCRIPTION	630	626	613/622
6300R	Rim, Listed to UL305 for Panic, hex key dogging, 3'0" door	\$1198	\$1198	\$1346
6300RF	Rim, Listed to UL10C for Fire, no dogging 3'0" door	\$1412	\$1412	\$1560
6310R	Rim, Listed to UL305 for Panic, hex key dogging, 4'0" door	\$1258	\$1258	\$1406
6310RF	Rim, Listed to UL10C for Fire, no dogging 4'0" door	\$1472	\$1472	\$1620
6320R	Rim, Listed to UL305 for Panic, hex key dogging, 2'0" door	\$1298	\$1298	\$1446
6320RF	Rim, Listed to UL10C for Fire, no dogging 2'0" door	\$1512	\$1512	\$1660

Available with all electrified options.

## 6400R Rim Narrow Stile Exit Devices

PART	DESCRIPTION	630	626	613/622
6400R	Rim, Listed to UL305 for Panic, hex key dogging, 3'0" door	\$1267	\$1267	\$1415
6400RF	Rim, Listed to UL10C for Fire, no dogging 3'0" door	\$1481	\$1481	\$1629
6410R	Rim, Listed to UL305 for Panic, hex key dogging, 4'0" door	\$1327	\$1327	\$1475
6410RF	Rim, Listed to UL10C for Fire, no dogging 4'0" door	\$1501	\$1501	\$1649
6420R	Rim, Listed to UL305 for Panic, hex key dogging, 2'0" door	\$1367	\$1367	\$1515
6420RF	Rim, Listed to UL10C for Fire, no dogging 2'0" door	\$1581	\$1581	\$1729

## 6300/6400R Rim Mechanical Options

PART	DESCRIPTION	EXIT DEVICE ADJUSTMENT
EC	End Cap Cover	\$42
TLA	Head Cover (Similar to 6200 Series)	\$40
AM	Anti Microbial (630/626 only)	\$162
WS	Florida HVHZ	\$110
CD	Cylinder Dogging	\$78
LD	Less Dogging	-
SNB	Sex Nuts & Bolts	\$36
BS	Blade Stop Strike	\$104
DD	Double Door Strike	\$104
SHS	Tamper Proof Security Head Screws	\$92

## 6300/6400R Rim Electrical Options

PART	DESCRIPTION	EXIT DEVICE ADJUSTMENT
AL	Alarmed Exit	\$302
LM	Latch Bolt Monitoring	\$208
MLR	Motorized Latch Retraction	\$914
SS	Signal Switch - Request to Exit or touch bar Monitoring	\$156
ALHW	Alarmed Exit with Hard Wire Power and Relay	\$422
ISMC	Industry Standard Molex Connector (order in addition to other electrified options)	\$120

Parts Discount.

1: Electrified options not available on 24" device.

2: For the MLR Motorized Latch Retraction option: 3 ft devices, maximum cut is 3". 4 ft devices, maximum cut is 9".

3: For the Alarm option: 3 ft devices, maximum cut is 2". 4 ft devices, maximum cut is 8".

# Surface Vertical Rod Device

## 6300V Wide Stile/6400V Narrow Stile

### Panic & Fire Rated

**6300V/VF** - Wide Stile SVR exit device with ¾” toggle latch top, and ⅝” travel drop bolt on the bottom. Use for wide stile double door applications.

**6400V/VF** - Narrow Stile SVR exit device with ¾” toggle latch top, and ⅝” travel drop bolt on the bottom. Use for narrow stile double door applications, or when a narrow look is preferred.



### Specifications

<b>Rail</b>	• Extruded aluminum • Specify 630F for full stainless surfaces (roll formed)
<b>Latch</b>	• Top - Stainless Steel ¾” toggle • Bottom - ⅝” Travel Drop Bolt • Less bottom rod option
<b>Hand</b>	• Device is non-handed • Trim is non-handed or field reversible
<b>Dogging</b>	• Hex key dogging standard • Cylinder dogging optional • Dogging not available for fire labeled devices
<b>Minimum Stile Width</b>	• 6300 - 3-1/2” • 6400 - 2-1/8”
<b>Door Thickness</b>	• 1-3/4” - 2” (Consult factory for other)
<b>Door Width</b>	• 24”, 36”, 48” standard
<b>Door Height</b>	• Panic - Up to 10’ • Fire - See fire ratings charts page 26
<b>Strike</b>	• Cast top strike, plate bottom strike
<b>Finishes</b>	• 605 - Polished Brass, 606 - Satin Brass, 613 - Dark Bronze, 622 - Flat Black, 626 - Satin Chrome, 630 - Satin Stainless Steel, 630F – Full Satin Stainless Surfaces • Optional Anti-Microbial Coating available on 626, 630 & 630F
<b>Fasteners</b>	• Includes machine screws and wood screws • SNB Optional
<b>Warranty</b>	• Ten (10) year limited warranty
<b>Electrified Options</b>	• Motorized Latch Retraction • Request to Exit/Signal Switch • Alarmed Exit • Latch Bolt Monitor • ISMC Connectors
<b>Certifications Compliances Listings</b>	• Listed for UL 305 “Panic”, listed for UL 10C “Fire Exit Hardware” up to 3 hours. • ANSI/BHMA A156.3 Grade 1 • Complies with ADA (Americans with Disabilities Act) and ICC/ANSI 117.1 for Accessible and Usable Buildings • Meets requirements of the Buy American Act





# 6300/6400V Vertical Rod Exit Device

## How to Order

Series	For Door Width	Device Type	Rating	Finish	Options	Electrified Options
<b>63</b>	<b>00</b>	<b>V</b>	<b>--</b>	<b>630</b>	<b>--</b>	<b>--</b>
<b>63</b> - Wide Stile Device <b>64</b> - Narrow Stile Device	<b>00</b> - 36" Door <b>10</b> - 48" Door <b>20</b> - 24" Door	<b>V</b> - SVR Device	<b>Blank</b> - Panic Rated <b>F</b> - Fire Rated	<b>613</b> - Dark Bronze <b>622</b> - Satin Black <b>626</b> - Satin Chrome <b>630</b> - Satin SS/ Anodized Alum	<b>Dogging</b> (Panic Rated Only): <b>Blank</b> - Hex Key Dogging <b>CD</b> - Cylinder Dogging <b>LD</b> - Less Dogging*  <b>LBR</b> - Less Bottom Rod (SVR/CVR) <b>LBR-FP</b> - Less Bottom Rod with Fire Pin (SVR/CVR)  <b>EC</b> - End Cap Cover <b>TLA</b> - Head Cover <b>SNB</b> - Sex Nuts & Bolts <b>AM</b> - Anti-Microbial <b>SK</b> - Shim Kit <b>SHS</b> - Security Head Screws  <b>7</b> - 7' door (default) <b>8</b> - 8' door <b>10</b> - 8'-10' Door	<b>MLR</b> - Motorized Latch Retr. <b>AL</b> - Alarm Kit* <b>SS</b> - Signal Switch on touch bar <b>LM</b> - Latchbolt Monitor <b>ISMC</b> - Industry Standard Molex Connector <b>ALHW</b> - Alarm kit hard wired

\*Multiple Selections Allowed  
 \*Dogging options only apply to Panic Rated

\*MLR can be combined with LM & SS  
 \*AL can be combined with LM  
 \*MLR and AL cannot be combined  
 \*ISMC available on all  
 \*AL - specify handing

## 6300V Surface Vertical Rod Wide Stile Exit Devices

PART	DESCRIPTION	630	626	613/622
6300V	Surface vertical rod, Listed to UL305 for Panic, hex key dogging, 3'0" door	\$1801	\$1801	\$1949
6300VLBR	Surface vertical rod, less bottom rod, Listed to UL305 for Panic, hex key dogging, 3'0" door			
6300VF	Surface vertical rod, Listed to UL10C for Fire, no dogging, 3'0" door	\$2015	\$2015	\$2163
6300VFLBR	Surface vertical rod, less bottom rod, Listed to UL10C for Fire, no dogging, 3'0" door			
6310V	Surface vertical rod, Listed to UL305 for Panic, hex key dogging, 4'0" door	\$1861	\$1861	\$2009
6310VLBR	Surface vertical rod, less bottom rod, Listed to UL305 for Panic, hex key dogging, 4'0" door			
6310VF	Surface vertical rod, Listed to UL10C for Fire, no dogging, 4'0" door	\$2075	\$2075	\$2223
6310VFLBR	Surface vertical rod, less bottom rod, Listed to UL10C for Fire, no dogging, 4'0" door			
6320V	Surface vertical rod, Listed to UL305 for Panic, hex key dogging, 2'0" door	\$1901	\$1901	\$2049
6320VLBR	Surface vertical rod, less bottom rod, Listed to UL305 for Panic, hex key dogging, 2'0" door			
6320VF	Surface vertical rod, Listed to UL10C for Fire, no dogging, 2'0" door	\$2115	\$2115	\$2263
6320VFLBR	Surface vertical rod, less bottom rod, Listed to UL10C for Fire, no dogging, 2'0" door			

For devices over 7' high, add \$25 per foot

## 6400V Surface Vertical Rod Narrow Stile Exit Devices

PART	DESCRIPTION	630	626	613/622
6400V	Surface vertical rod, Listed to UL305 for Panic, hex key dogging, 3'0" door	\$1948	\$1948	\$2096
6400VLBR	Surface vertical rod, less bottom rod, Listed to UL305 for Panic, hex key dogging, 3'0" door			
6400VF	Surface vertical rod, Listed to UL10C for Fire, no dogging, 3'0" door	\$2162	\$2162	\$2310
6400VFLBR	Surface vertical rod, less bottom rod, Listed to UL10C for Fire, no dogging, 3'0" door			
6410V	Surface vertical rod, Listed to UL305 for Panic, hex key dogging, 4'0" door	\$2008	\$2008	\$2156
6410VLBR	Surface vertical rod, less bottom rod, Listed to UL305 for Panic, hex key dogging, 4'0" door			
6410VF	Surface vertical rod, Listed to UL10C for Fire, no dogging, 4'0" door	\$2222	\$2222	\$2370
6410VFLBR	Surface vertical rod, less bottom rod, Listed to UL10C for Fire, no dogging, 4'0" door			
6420V	Surface vertical rod, Listed to UL305 for Panic, hex key dogging, 2'0" door	\$2048	\$2048	\$2196
6420VLBR	Surface vertical rod, less bottom rod, Listed to UL305 for Panic, hex key dogging, 2'0" door			
6420VF	Surface vertical rod, Listed to UL10C for Fire, no dogging, 2'0" door	\$2262	\$2262	\$2410
6420VFLBR	Surface vertical rod, less bottom rod, Listed to UL10C for Fire, no dogging, 2'0" door			

For devices over 7' high, add \$25 per foot

## 6300/6400V Surface Vertical Rod Mechanical Options

PART	DESCRIPTION	EXIT DEVICE ADJUSTMENT
EC	End Cap Cover	\$42
TLA	Head Cover (Similar to 6200 Series)	\$40
AM	Anti Microbial (630/626 only)	\$162
CD	Cylinder Dogging	\$85
LD	Less Dogging	-
SNB	Sex Nuts & Bolts	\$38
SHS	Tamper Proof Security Head Screws	\$92
LBR	Less Bottom Rod	-
LBR-FP	Less Bottom Rod with Fire Pin (used with fire rated pair)	-

## 6300/6400V Surface Vertical Rod Electrical Options

PART	DESCRIPTION	EXIT DEVICE ADJUSTMENT
AL	Alarmed Exit	\$302
LM	Latch Bolt Monitoring	\$208
MLR	Motorized Latch Retraction	\$914
SS	Signal Switch - Request to Exit and Monitoring	\$156
ALHW	Alarmed Exit with Hard Wire Power and Relay	\$422
ISMC	Industry Standard Molex Connector (order in addition to other electrified options)	\$120

**Parts Discount.**

- 1: Electrified options not available on 24" device.
- 2: For the MLR Motorized Latch Retraction option: 3 ft devices, maximum cut is 3". 4 ft devices, maximum cut is 9".
- 3: For the Alarm option: 3 ft devices, maximum cut is 2". 4 ft devices, maximum cut is 8".

# Concealed Vertical Rod Device

## 6300C Wide Stile/6400C Narrow Stile

Panic & Fire Rated

**6300C/CF** - Wide Stile CVR exit device with 3/4" toggle latch top, and 5/8" travel drop bolt on the bottom. Use for wide stile double door applications and for single door applications where more security is needed.

**6400C/CF** - Narrow Stile CVR exit device with 3/4" toggle latch top and 5/8" travel drop bolt on the bottom. Use for narrow stile double door applications, or when a narrow look is preferred.



### Specifications

<b>Rail</b>	• Extruded aluminum • Specify 630F for full stainless surfaces (roll formed)
<b>Latch</b>	• Top - Stainless Steel 3/4" toggle • Bottom - 5/8" Travel Drop Bolt • Less bottom rod option
<b>Hand</b>	• Device is non-handed • Trim is non-handed or field reversible
<b>Dogging</b>	• Hex key dogging standard • Cylinder dogging optional • Dogging not available for fire labeled devices
<b>Minimum Stile Width</b>	• 6300 - 3-1/2" • 6400 - 2-1/8"
<b>Door Thickness</b>	• 1-3/4" - 2" (Consult factory for other)
<b>Door Width</b>	• 24", 36", 48" standard
<b>Door Height</b>	• Panic - Up to 10' • Fire - See fire ratings charts page 26
<b>Strike</b>	• Cast top strike, plated bottom strike
<b>Finishes</b>	• 605 - Polished Brass, 606 - Satin Brass, 613 - Dark Bronze, 622 - Flat Black, 626 - Satin Chrome, 630 - Satin Stainless Steel, 630F – Full Satin Stainless Surfaces • Optional Anti-Microbial Coating available on 626, 630 & 630F
<b>Fasteners</b>	• Includes machine and wood screws • SNB Optional
<b>Warranty</b>	• Ten (10) year limited warranty
<b>Electrified Options</b>	• Motorized Latch Retraction • Request to Exit/Signal Switch • Alarmed Exit • Latch Bolt Monitor • ISMC Connectors
<b>Certifications Compliances Listings</b>	• Listed for UL 305 "Panic", listed for UL 10C "Fire Exit Hardware" up to 3 hours. • ANSI/BHMA A156.3 Grade 1 Pending • Complies with ADA (Americans with Disabilities Act) and ICC/ANSI 117.1 for Accessible and Usable Buildings • Meets requirements of the Buy American Act



# 6300/6400C Concealed Vertical Exit Device

## How to Order

Series	For Door Width	Device Type	Rating	Finish	Options	Electrified Options
<b>63</b>	<b>00</b>	<b>C</b>	<b>--</b>	<b>630</b>	<b>--</b>	<b>--</b>
<b>63</b> - Wide Stile Device <b>64</b> - Narrow Stile Device	<b>00</b> - 36" Door <b>10</b> - 48" Door <b>20</b> - 24" Door	<b>C</b> - CVR Device	<b>Blank</b> - Panic Rated <b>F</b> - Fire Rated	<b>613</b> - Dark Bronze <b>622</b> - Satin Black <b>626</b> - Satin Chrome <b>630</b> - Satin SS/ Anodized Alum	<b>Dogging</b> (Panic Rated Only): <b>Blank</b> - Hex Key Dogging <b>CD</b> - Cylinder Dogging <b>LD</b> - Less Dogging*  <b>LBR</b> - Less Bottom Rod (SVR/CVR) <b>LBR-FP</b> - Less Bottom Rod with Fire Pin (SVR/CVR) <b>EC</b> - End Cap Cover <b>TLA</b> - Head Cover <b>SNB</b> - Sex Nuts & Bolts <b>AM</b> - Anti-Microbial  <b>7</b> - 7' door (default) <b>8</b> - 8' door <b>10</b> - 8'-10' Door	<b>MLR</b> - Motorized Latch Retr. <b>AL</b> - Alarm Kit* <b>SS</b> - Signal Switch on touch bar <b>LM</b> - Latchbolt Monitor <b>ISMC</b> - Industry Standard Molex Connector

\*Multiple Selections Allowed  
 \*Dogging options only apply to Panic Rated  
 \*MLR can be combined with LM & SS  
 \*AL can be combined with LM  
 \*MLR and AL cannot be combined  
 \*ISMC available on all  
 \*AL - specify handing

## 6300C Concealed Vertical Rod Wide Stile Exit Devices

PART	DESCRIPTION	630	626	613/622
6300C	Concealed vertical rod, Listed to UL305 for Panic, hex key dogging, 3'0" door	\$2083	\$2083	\$2231
6300CLBR	Concealed vertical rod, less bottom rod, Listed to UL305 for Panic, hex key dogging, 3'0" door			
6300CF	Concealed vertical rod, Listed to UL10C for Fire, no dogging, 3'0" door	\$2297	\$2297	\$2445
6300CFLBR	Concealed vertical rod, less bottom rod, Listed to UL10C for Fire, no dogging, 3'0" door			
6310C	Concealed vertical rod, Listed to UL305 for Panic, hex key dogging, 4'0" door	\$2143	\$2143	\$2291
6310CLBR	Concealed vertical rod, less bottom rod, Listed to UL305 for Panic, hex key dogging, 4'0" door			
6310CF	Concealed vertical rod, Listed to UL10C for Fire, no dogging, 4'0" door	\$2357	\$2357	\$2505
6310CFLBR	Concealed vertical rod, less bottom rod, Listed to UL10C for Fire, no dogging, 4'0" door			
6320C	Concealed vertical rod, Listed to UL305 for Panic, hex key dogging, 2'0" door	\$2183	\$2183	\$2331
6320CLBR	Concealed vertical rod, less bottom rod, Listed to UL305 for Panic, hex key dogging, 2'0" door			
6320CF	Concealed vertical rod, Listed to UL10C for Fire, no dogging, 2'0" door	\$2397	\$2397	\$2545
6320CFLBR	Concealed vertical rod, less bottom rod, Listed to UL10C for Fire, no dogging, 2'0" door			

For devices over 7' high, add \$25 per foot

## 6400C Concealed Vertical Rod Narrow Stile

PART	DESCRIPTION	630	626	613/622
6400C	Concealed vertical rod, Listed to UL305 for Panic, hex key dogging, 3'0" door	\$2231	\$2231	\$2379
6400CLBR	Concealed vertical rod, less bottom rod, Listed to UL305 for Panic, hex key dogging, 3'0" door			
6400CF	Concealed vertical rod, Listed to UL10C for Fire, no dogging, 3'0" door	\$2445	\$2445	\$2593
6400CFLBR	Concealed vertical rod, less bottom rod, Listed to UL10C for Fire, no dogging, 3'0" door			
6410C	Concealed vertical rod, Listed to UL305 for Panic, hex key dogging, 4'0" door	\$2291	\$2291	\$2439
6410CLBR	Concealed vertical rod, less bottom rod, Listed to UL305 for Panic, hex key dogging, 4'0" door			
6410CF	Concealed vertical rod, Listed to UL10C for Fire, no dogging, 4'0" door	\$2505	\$2505	\$2653
6410CFLBR	Concealed vertical rod, less bottom rod, Listed to UL10C for Fire, no dogging, 4'0" door			
6420C	Concealed vertical rod, Listed to UL305 for Panic, hex key dogging, 2'0" door	\$2331	\$2331	\$2479
6420CLBR	Concealed vertical rod, less bottom rod, Listed to UL305 for Panic, hex key dogging, 2'0" door			
6420CF	Concealed vertical rod, Listed to UL10C for Fire, no dogging, 2'0" door	\$2545	\$2545	\$2693
6420CFLBR	Concealed vertical rod, less bottom rod, Listed to UL10C for Fire, no dogging, 2'0" door			

For devices over 7' high, add \$25 per foot

## 6300/6400 CVR Mechanical Options

PART	DESCRIPTION	EXIT DEVICE ADJUSTMENT
EC	End Cap Cover	\$42
TLA	Head Cover (Similar to 6200 Series)	\$40
AM	Anti Microbial (630/626 only)	\$162
CD	Cylinder Dogging	\$85
LD	Less Dogging	-
SNB	Sex Nuts & Bolts	\$38
SHS	Tamper Proof Security Head Screws	\$92
LBR	Less Bottom Rod	-
LBR-FP	Less Bottom Rod with Fire Pin (used with fire rated pair)	-

## 6300/6400 CVR Electrical Options

PART	DESCRIPTION	EXIT DEVICE ADJUSTMENT
AL	Alarmed Exit	\$302
LM	Latch Bolt Monitoring	\$208
MLR	Motorized Latch Retraction	\$914
SS	Signal Switch - Request to Exit and Monitoring	\$156
ALHW	Alarmed Exit with Hard Wire Power and Relay	\$422
ISMC	Industry Standard Molex Connector (order in addition to other electrified options)	\$120

Parts Discount.

1: Electrified options not available on 24" device.

2: For the MLR Motorized Latch Retraction option: 3 ft devices, maximum cut is 3". 4 ft devices, maximum cut is 9".

3: For the Alarm option: 3 ft devices, maximum cut is 2". 4 ft devices, maximum cut is 8".

## Mortise Device

### 6300M Wide Stile

#### Panic & Fire Rated

**6300M** - Wide Stile Mortise exit device with 3/4" throw latch bolt. Use for wide stile single door applications. Also, use for retrofit or pair with SVR/CVR/flush bolts and open back strike.

- This device is built around our signature MR series mortise lock. Easily retrofit an existing mortise lock opening with a mortise device.



#### Specifications

Rail	• Extruded aluminum • Specify 630F for full stainless surfaces (roll formed)
Latch	• Stainless steel dead locking with 3/4" throw
Hand	• Field reversible
Dogging	• Hex key dogging standard • Cylinder dogging optional • Dogging not available for fire labeled devices
Minimum Stile Width	• 5"
Door Thickness	• 1-3/4" - 2" (Consult factory for other)
Door Width	• 24", 36", 48" standard
Door Height	• Panic - Up to 10' • Fire - See fire ratings charts page 26
Strike Options	• Default ASA (4-7/8")
Finishes	• 605 - Polished Brass, 606 - Satin Brass, 613 - Oil Rubbed Bronze, 622 - Flat Black, 626 - Satin Chrome, 630 - Satin Stainless Steel, 630F – Full Satin Stainless Surfaces • Optional Anti Microbial Coating available on 626, 630 & 630F
Fasteners	• Includes machine screws and wood screws • SNB Optional
Warranty	• Ten (10) year limited warranty
Electrified Options	• Motorized Latch Retraction • Request to Exit/Signal Switch • Alarmed Exit • Latch Bolt Monitor • ISMC Connectors
Certifications Compliances Listings	• Listed for UL 305 "Panic", listed for UL 10C "Fire Exit Hardware" up to 90 minutes. • Complies with ADA (Americans with Disabilities Act) and ICC/ANSI 117.1 for Accessible and Usable Buildings • Meets requirements of the Buy American Act





# 6300M Mortise Exit Device

## How to Order

Series	For Door Width	Device Type	Rating	Finish	Options	Electrified Options
<b>63</b>	<b>00</b>	<b>M</b>	<b>--</b>	<b>630</b>	<b>--</b>	<b>--</b>
<b>63</b> - Wide Stile Device	<b>00</b> - 36" Door <b>10</b> - 48" Door <b>20</b> - 24" Door	<b>M</b> - Wide Stile Mortise Device*	<b>Blank</b> - Panic Rated	<b>613</b> - Dark Bronze <b>622</b> - Satin Black <b>626</b> - Satin Chrome <b>630</b> - Satin SS/Anodized Alum	<b>Dogging</b> (Panic Rated Only): <b>Blank</b> - Hex Key Dogging <b>CD</b> - Cylinder Dogging <b>LD</b> - Less Dogging*  <b>EC</b> - End Cap Cover <b>TLA</b> - Head Cover <b>SNB</b> - Sex Nuts & Bolts <b>AM</b> - Anti-Microbial <b>SHS</b> - Security Head Screws	<b>MLR</b> - Motorized Latch Retr. <b>AL</b> - Alarm Kit* <b>SS</b> - Signal Switch on touch bar <b>LM</b> - Latchbolt Monitor <b>ISMC</b> - Industry Standard Molex Connector <b>ALHW</b> - Alarm kit hard wired

\*Mortise in wide stile device only

\*Multiple Selections Allowed  
\*Dogging options only apply to Panic Rated

\* MLR can be combined with LM & SS  
\* AL can be combined with LM  
\* MLR and AL cannot be combined  
\* ISMC available on all  
\* AL - specify handing

## 6300M Mortise Wide Stile Exit Devices

PART	DESCRIPTION	630	626	613/622
6300M	Mortise wide stile exit, Listed to UL305 for Panic, hex key dogging, 3'0" door width	\$2006	\$2006	\$2154
6300MF	Mortise wide stile exit, Listed to UL10C for Fire, 3'0" door width	\$2220	\$2220	\$2368
6310M	Mortise wide stile exit, Listed to UL305 for Panic, hex key dogging, 4'0" door width	\$2066	\$2066	\$2214
6310MF	Mortise wide stile exit, Listed to UL10C for Fire, 4'0" door width	\$2280	\$2280	\$2428
6320M	Mortise wide stile exit, Listed to UL305 for Panic, hex key dogging, 2'0" door	\$2106	\$2106	\$2254
6320MF	Mortise wide stile exit, Listed to UL10C for Fire, no dogging 2'0" door	\$2320	\$2320	\$2468

## 6300/6400M Mortise Wide Stile Mechanical Options

PART	DESCRIPTION	EXIT DEVICE ADJUSTMENT
EC	End Cap Cover	\$42
TLA	Head Cover (Similar to 6200 Series)	\$40
AM	Anti Microbial (630/626 only)	\$162
CD	Cylinder Dogging	\$85
LD	Less Dogging	-
SNB	Sex Nuts & Bolts	\$38
SHS	Tamper Proof Security Head Screws	\$92
LBR	Less Bottom Rod	-
LBR-FP	Less Bottom Rod with Fire Pin (used with fire rated pair)	-

## 6300/6400M Mortise Wide Stile Electrical Options

PART	DESCRIPTION	EXIT DEVICE ADJUSTMENT
AL	Alarmed Exit	\$302
LM	Latch Bolt Monitoring	\$208
MLR	Motorized Latch Retraction	\$914
SS	Signal Switch - Request to Exit and Monitoring	\$156
ALHW	Alarmed Exit with Hard Wire Power and Relay	\$422
ISMC	Industry Standard Molex Connector (order in addition to other electrified options)	\$120

\*Not at Parts Discount.

1: Electrified options not available on 24" device.

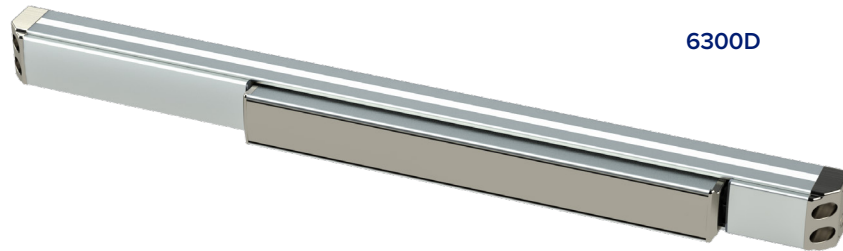
2: For the MLR Motorized Latch Retraction option: 3 ft devices, maximum cut is 3". 4 ft devices, maximum cut is 9".

3: For the Alarm option: 3 ft devices, maximum cut is 2". 4 ft devices, maximum cut is 8".

# Dummy Device

## 6300D Dummy

**6300D** - A dummy device with no latching. The device comes with an active push bar, but can also be dogged/locked down with the included dogging kit. Order with a signal switch to operate a mag lock or other electronic devices. The device is commonly used on inside vestibule doors where latching is not required, or as an electrical switch for an auxiliary device.



### Specifications

<b>Rail</b>	• Extruded aluminum
<b>Hand</b>	• Device is non-handed
<b>Dogging</b>	• Dogging standard    • Active push bar, dog to make inactive
<b>Minimum Stile Width</b>	• 6300 - 3-1/2"
<b>Door Thickness</b>	• 1-3/4" - 2" (Consult factory for other)
<b>Door Width</b>	• 24", 36", 48" standard
<b>Finishes</b>	• 605 - Polished Brass, 606 - Satin Brass, 613 - Dark Bronze, 622 - Flat Black, 626 - Satin Chrome, 630 - Satin Stainless Steel, 630F – Full Satin Stainless Surfaces • Optional Anti Microbial Coating available on 626, 630 & 630F
<b>Fasteners</b>	• Includes machine and wood screws    • SNB Optional
<b>Warranty</b>	• Ten (10) year limited warranty
<b>Electrified Options</b>	• Request to Exit/Signal Switch    • ISMC Connectors
<b>Certifications Compliances Listings</b>	• Complies with ADA (Americans with Disabilities Act) and ICC/ANSI 117.1 for Accessible and Usable Buildings • Meets requirements of the Buy American Act



# 6300D Dummy Exit Device

## How to Order

Series	For Door Width	Device Type	Rating	Finish	Options
<b>63</b>	<b>00</b>	<b>D</b>	<b>--</b>	<b>630</b>	<b>--</b>
63 - Wide Stile Device	00 - 36" Door 10 - 48" Door 20 - 24" Door	D - Dummy Device	Blank - Panic Rated	613 - Dark Bronze 622 - Satin Black 626 - Satin Chrome 630 - Satin SS/ Anodized Alum	<b>Dogging</b> (Panic Rated Only):  SS - Signal switch on touch bar

## 6300/6400D Dummy Exit Devices

PART	DESCRIPTION	630	626	613/622
6300D	Dummy, 3'0" door	\$875	\$875	\$905
6310D	Dummy, 4'0" door	\$925	\$925	\$955
6320D	Dummy, 2'0" door	\$925	\$925	\$955

## 6300/6400M Mortise Wide Stile Mechanical Options

PART	DESCRIPTION	EXIT DEVICE ADJUSTMENT
EC	End Cap Cover	\$42
SNB	Sex Nuts & Bolts	\$38
SHS	Tamper Proof Security Head Screws	\$92

## 6300/6400M Mortise Wide Stile Electrical Options

PART	DESCRIPTION	EXIT DEVICE ADJUSTMENT
SS	Signal Switch - Request to Exit and Monitoring	\$156

## Introducing the 6300/6400 Trim Family

Trims are non-handed and use simple door prep based on a 2 hole bolt pattern with 7" centers, or a 4 hole bolt pattern with 7"x1-3/8" centers.

Narrow escutcheons work with both wide and narrow stile devices. Wide escutcheons work only with wide stile devices.



**6N Narrow Escutcheon** - A narrow profile escutcheon for 6300 or 6400 device. Available in 6 lever styles, and in 6 functions. Use with narrow stile devices or a wide stile device when a slimmer look is desired.



**6W Wide Escutcheon** - A wide escutcheon for the 6300 device. Available in 6 lever styles, and 5 functions - including electric locking. Use with wide stile devices, when a more substantial look is desired, or for retrofit where covering existing holes is important.

*\*Not compatible with 6400 narrow stile devices*



**6T Thumb Latch** - A grip pull with a thumb latch for 6300 or 6400 devices. Available in 3 functions.

*\*Not compatible with 6400C narrow stile devices.*



**6P Pull Plate** - Stainless Steel pull plate for 6300 device.

*\*Not compatible with 6400 narrow stile devices.*



**6G Grip Pull** - A grip pull for 6300 or 6400 devices. Made of stainless steel, this grip pull is available in 2 functions.



**6S Rose Trim** - Rose trim that fits into standard 161 prepped door with thru bolts. Works with 6300 rim, SVR and CVR devices. Available in 3 lever styles and in 4 functions.

*\*Not compatible with 6400 narrow stile devices*

## Lever Styles

**PHL**



**BSN**



**MIA**



**ORL**



**CHI**



**LAX**



# 6300/6400 Exit Device Trim

## How to Order

TRIM TYPE	LEVER	FINISH	CYLINDER TYPE	KEYWAY	KEYING
<b>6N08</b>	<b>PHL</b>	<b>630</b>	<b>D</b>	<b>SCC</b>	<b>KD</b>
<b>Narrow Escutcheon</b>	<b>PHL</b> – Philadelphia	<b>*605</b> – Bright Brass	<b>D</b> Default <b>L</b> Less Cylinder	<b>SCC</b> – Schlage C	<b>KD</b> – Keyed Different
<b>6N01</b> – Narrow, Blank (No lever)	<b>BSN</b> – Boston	<b>*606</b> – Satin Brass	<b>SF6</b> Lock is SFIC prepped w/ 6 pin core	<b>OTHERS</b> – See Keyway Table Page 22	<b>KA</b> – Keyed Like
<b>6N02</b> – Narrow, Fixed Lever	<b>MIA</b> – Miami	<b>613</b> – Dark Bronze	<b>SF7</b> Lock is SFIC prepped w/ 7 pin core		<b>KO</b> – Zero Bitted
<b>6N03</b> – Narrow, Cylinder Only (No Lever) Night Latch	<b>*CHI</b> – Chicago	<b>622</b> – Satin Black	<b>SFL</b> Lock is SFIC prepped but less core		<b>MK</b> – Master Keyed
<b>6N08</b> – Narrow, Classroom	<b>*ORL</b> – Orlando	<b>625</b> – Bright Chrome	<b>SFC</b> Lock is SFIC prepped w/ construction core		<b>CMK</b> – Construction Master Keyed
<b>6N09</b> – Narrow Storeroom	<b>*LAX</b> – Los Angeles	<b>626</b> – Satin Chrome	<b>SFP</b> Lock is SFIC prepped w/ plastic construction core		<b>GMK</b> – Grand Master Keyed
<b>6N14</b> – Narrow Passage	<b>*Not available with S Trim</b>	<b>630</b> – Satin Stainless	<b>LF6</b> Lock is Schlage LFIC prepped w/ Schlage core		
<b>Wide Escutcheon</b>			<b>LFL</b> Lock is Schlage LFIC prepped but less core		
<b>6W02</b> – Wide, Fixed Lever			<b>LFC</b> Lock is Schlage LFIC prepped w/ construction core		
<b>6W08</b> – Wide, Classroom			<b>*Cores sold separately - option specifies factory installation</b>		
<b>6W09</b> – Wide, Storeroom					
<b>6W14</b> – Wide, Passage					
<b>6W99</b> – Electrified					
<b>Sectional/Rose</b>					
<b>6S02</b> – Sectional, Rigid Lever		<i>*Extended lead time - Contact factory for details</i>			
<b>6S08</b> – Sectional, Classroom					
<b>6S09</b> – Sectional, Storeroom					
<b>6S14</b> – Sectional, Passage					
<b>Thumb Latch</b>					
<b>6T05</b> – Thumb Latch, Classroom					
<b>6T06</b> – Thumb Latch, Storeroom					
<b>6T15</b> – Thumb Latch, Passage					
<b>Pull Plate</b>					
<b>6P03</b> – Pull Plate, Cylinder					
<b>Grip Pull</b>					
<b>6G02</b> – Pull only					
<b>6G03</b> – Storeroom					

OPTIONS
<b>TC</b> - Tactile Abrasive Coating (Lever trims only)
<b>AM</b> - Anti-Microbial



**6N**  
Narrow Escutcheon  
01, 02, 03, 08, 09, 14



**6W**  
Wide Escutcheon  
02, 08, 09, 14, 99



**6G**  
Grip Pull  
02, 03



**6T**  
Thumb Latch  
05, 06, 15



**6P**  
Pull Plate  
03



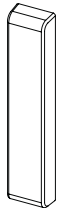
**6S**  
Sectional/Rose  
02, 08, 09, 14

# 6N Escutcheon Trim

## 6N Functions

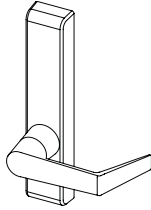
### 01 Blank

Blank Escutcheon



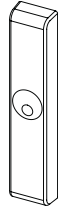
### 02 Pull Only

Entrance/Pull only when device is dogged. Fixed lever.



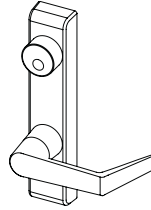
### 03 Night Latch

Entrance when latch retracted by key. Key removable only when locked.



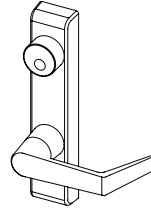
### 08 Classroom

Key locks or unlocks lever.



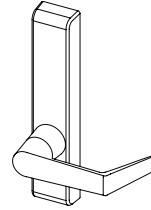
### 09 Storeroom

Entrance by lever when unlocked by key. Key removable only when locked.



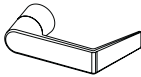
### 14 Passage

Entrance by lever, always unlocked.



## 6N Lever Styles

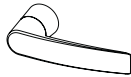
### PHL



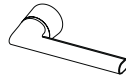
### BSN



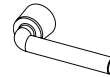
### MIA



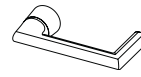
### ORL



### CHI



### LAX



## Applicable Devices

- 6400R Narrow Rim Device
- 6400V Narrow Surface Vertical Device
- 6400C Narrow Concealed Vertical Device
- 6300R Wide Stile Rim Device
- 6300V Wide Surface Vertical Device
- 6300C Wide Concealed Vertical Device
- 6300M Wide Mortise Device (Except 03 function)

CYLINDER OPTIONS	ICON	LOCK ADJUSTMENT
SFL		N/C
LFL		\$10.00
D		N/C

IC Core not included.

## 6N Narrow Stile Trim

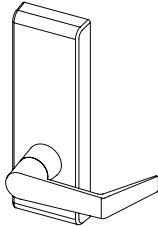
6N	APPLICATION	FUNCTION	DESCRIPTION	LEVER	630	613/622/625
	Rim Surface Vertical Rod Concealed Vertical Rod Mortise	01	Blank	PHL, BSN, MIA, ORL, CHI, LAX	\$220	\$250
		02	Dummy Trim (Rigid Lever)		\$621	\$636
		03	Night Latch		\$320	\$350
		08	Classroom w/ Lever		\$694	\$709
		09	Storeroom w/ Lever		\$621	\$636
		14	Passage w Lever			

# 6W Escutcheon Trim

## 6W Functions

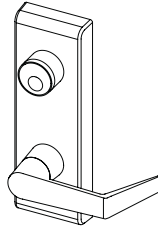
### 02 Pull Only

Entrance/Pull only when device is dogged. Fixed lever.



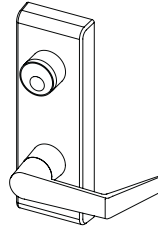
### 08 Classroom

Key locks or unlocks lever. Conversion kit included to convert locking function.



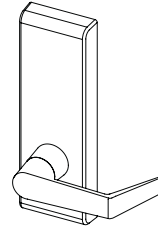
### 09 Storeroom

Entrance by lever when unlocked by key. Key removable only when locked.



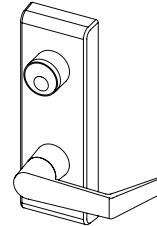
### 14 Passage

Entrance by lever, always unlocked.



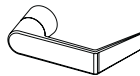
### 99 Electrified

Locked/Unlocked electronically. FS/FSF configurable. Entry by key. Key does not change lock state.



## 6W Lever Styles

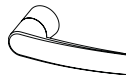
### PHL



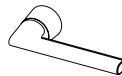
### BSN



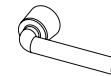
### MIA



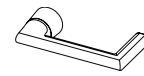
### ORL



### CHI



### LAX



## Applicable Devices

- 6300R Wide Stile Rim Device
- 6300V Wide Surface Vertical Device
- 6300C Wide Concealed Vertical Device
- 6300M Wide Mortise Device

## 6W Wide Stile Trim

6W	APPLICA-TION	FUNC-TION	DESCRIPTION	LEVER	630	613/ 622/625/626	CYLINDER OPTIONS	ICON	LOCK ADJUSTMENT
	Rim Surface Vertical Rod Concealed Vertical Rod Mortise	02	Dummy Trim (Rigid Lever)	PHL, BSN, MIA, ORL, CHI, LAX	\$583	\$613	SFL		N/C
		08	Classroom w/ Lever		\$671	\$701	LFL		\$10.00
		09	Storeroom w/ Lever		\$583	\$613	D		N/C
		14	Passage w/ Lever		\$1370	\$1400			
		99	Electrified Storeroom						

IC Core not included.

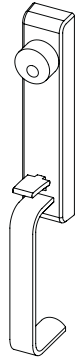


# 6T Thumb Latch Escutcheon Trim

## 6T Functions

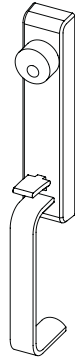
### 05 Classroom

Key locks or unlocks thumb piece.



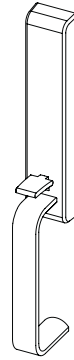
### 06 Storeroom

Entrance by thumb piece when released by key. Key removable only when locked.



### 15 Passage





Entrance by lever when unlocked by key. Key removable only when locked.



## Applicable Devices

- 6300R Wide Stile Rim Device
- 6300V Wide Surface Vertical Device
- 6300M Wide Mortise Device
- 6400R Narrow Rim Device
- 6400V Narrow Surface Vertical Device

## 6T Thumb Latch Trim

6T	APPLICATION	FUNCTION	DESCRIPTION	630	613/622	CYLINDER OPTIONS	ICON	LOCK ADJUSTMENT
THUMB LATCH 	Rim	05	Classroom	\$564	\$594	SFL		N/C
	Surface Vertical Rod	06	Storeroom			LFL		\$10.00
	Concealed Vertical Rod	15	Passage	\$486	\$516	D		N/C

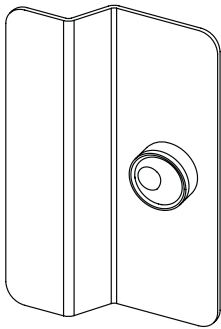
IC Core not included.

# 6P Pull Plate Trim

## 6P Functions

### 03 Night Latch



Entrance when latch retracted by key. Key removable only when locked.



## Applicable Devices

- 6300R Wide Stile Rim Device
- 6300V Wide Surface Vertical Device
- 6300C Wide Concealed Vertical Device

## 6P Pull Trim

6P	APPLICATION	FUNCTION	DESCRIPTION	630	613/622	CYLINDER OPTIONS	ICON	LOCK ADJUSTMENT
PULL TRIM 	Rim Surface Vertical Rod Concealed Vertical Rod	02	Dummy Pull Trim	\$160	\$190	SFL		N/C
		03	Night Latch	\$178	\$208	LFL		\$10.00
						D		N/C

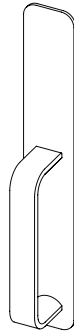
IC Core not included.

# 6G Grip Pull Trim

## 6G Functions

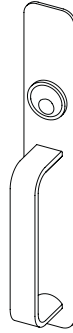
### 02 Pull Only

Entrance/Pull only when device is dogged.



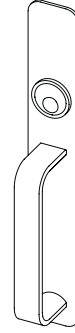
### 03 Night Latch

Entrance when latch retracted by key. Key removable only when locked.



### M03 Mortise Storeroom


Entrance when latch retracted by key. Key removable only when locked.






## Applicable Devices

- 6300R Wide Stile Rim Device
- 6300V Wide Surface Vertical Device
- 6300C Wide Concealed Vertical Device
- 6300M Wide Mortise Device (02 Function only)
- 6400R Narrow Rim Device
- 6400V Narrow Surface Vertical Device
- 6400C Narrow Concealed Vertical Device

## 6G Grip Pull Trim

6G	APPLICATION	FUNCTION	DESCRIPTION	630	613/622
GRIP PULL  	Rim Surface Vertical Rod Concealed Vertical Rod	02	Dummy Trim (Grip Pull only)	\$233	\$263
		03	Night Latch	\$310	\$340
		M03	Night Latch (Mortise Device)	\$310	\$340

CYLINDER OPTIONS	ICON	LOCK ADJUSTMENT
SFL		N/C
LFL		\$10.00
D		N/C

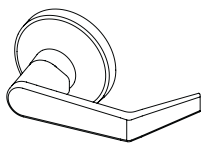
IC Core not included.

# 6S Rose Trim

## 6S Functions

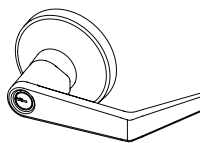
### 02 Pull Only

Entrance/Pull only when device is dogged. Lever is fixed.



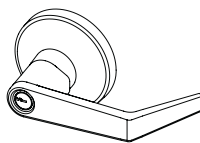
### 08 Classroom

Key locks or unlocks lever.



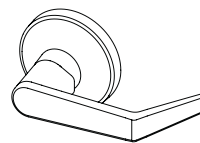
### 09 Storeroom

Entrance by lever when key inserted. Key removable only when locked.



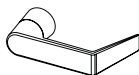
### 14 Passage

Entrance by lever. Always unlocked.



## 6S Lever Styles

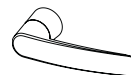
### PHL



### BSN




### MIA






## Applicable Devices

- 6300R Wide Stile Rim Device
- 6300V Wide Surface Vertical Device
- 6300C Wide Concealed Vertical Device

## 6S Sectional Trim

6S	APPLICATION	FUNCTION	DESCRIPTION	LEVER	626	613/622
 SECTIONAL LEVER	Rim Surface Vertical Rod Concealed Vertical Rod	02	Dummy Trim	BSN, MIA, PHL	\$309	\$339
		08	Classroom w/ Lever		\$442	\$472
		09	Storeroom w/ Lever		\$367	\$397
		14	Passage w/ Lever			

CYLINDER OPTIONS	ICON	LOCK ADJUSTMENT
SFL		N/C
LFL		\$10.00
D		N/C

IC Core not included.

## Electrified Options

Option	Description	MLR	AL	SS	LM	ISMC
<b>MLR</b>	Motorized Latch Retraction			O	O	O
<b>AL</b>	Alarmed Exit				O*	O
<b>SS</b>	Signal Switch on touch bar	O			O	O
<b>LM</b>	Latch bolt Monitoring	O	O	O		O
<b>ISMC</b>	Industry Standard Connector (Molex® Type)	O	O	O	O	

	Not compatible Cannot be combined	O= option O*= Standard on SVR/CVR
--	--------------------------------------	--------------------------------------

### MLR - Motorized Latch Retraction

#### Operation

When power is applied the MLR retracts the latch(es) allowing the door to be opened. Duration of latch retraction is controlled by the access control system. Power can be continuously applied to electronically dog the exit device.

#### Features

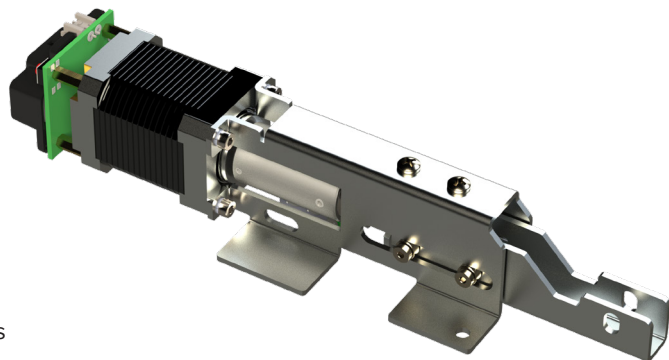
- Works with 6300 wide stile or 6400 narrow stile devices; panic or fire labeled
- Innovative motor drive retracts push pad
- Allows free egress at all times
- Suitable for pairing with Low Energy Power Operators

#### Electrical Specifications

- Input voltage 24 VDC  $\pm$  10%
- Non-polarized power leads
- Latch Retraction Speed:  $\sim$ 300mS
- Average in-rush current: 900mA
- Average holding current: 200mA

#### Retrofit kit part number: 639065

- Designed to field retrofit 6300 or 6400 series devices
- Includes motor drive module, connectors and fasteners



## Electrified Options

**AL - Alarm Kit**

**ALHW - Alarm Kit**

(Hardwire power & relay output)

### Operation

Battery powered self-contained alarm kit for 6300 or 6400 exit device.

The alarm kit is armed via clockwise rotation of the key. If armed, a siren sounds, and the red LED rapidly flashes when the touch bar is depressed. Factory default is continuous alarm. Rotate key counterclockwise to silence siren and disarm the unit.

Alarm kit for panic devices include a third position for dogging the device.

**Alarm Mode:** Unit can be configured to auto silence the alarm after 7, 3 or 1 minute.

**Armed State:** Red LED blinks every 10-seconds to indicate unit is armed.

**Armed State:** Red LED blinks every 10-seconds to indicate unit is armed.

**Low Battery:** Siren will intermittently chirp when battery is low (<7VDC). Siren chirps regardless of arming state.

**Battery Life:** 1-year life expectancy in armed, unactuated state.

**Siren Intensity:** 95dB @ 4in

**Operating Temperature:** 0 C – 49 C

**Max Relative Humidity:** 85% (non-condensing)

**Included Decal:** “EMERGENCY EXIT ONLY – ALARM WILL SOUND”

**Latchbolt Monitor:** Standard for SVR device

**Optional Rim Latchbolt Monitor:** Adds latchbolt monitor. When armed, either the touch bar or latchbolt monitor actuate siren.

**Optional Relay Output:** Adds a Single Pole Double Throw (SPDT) relay and hardwire power input to the unit. When armed, relay state changes when the touch bar is depressed. Can be used with access control systems. Dry contact SPDT rated 125VAC/ 60VDC with 9VDC coil



### Bar Length:

36” Device – 2” max cut

48” Device – 8” max cut

### Electrical Specifications:

**Power Requirements:** One 9-VDC Alkaline Battery (included).

*Optional (with relay output):* 12-24VDC/VAC ±10% hardwired power. Battery can be used as emergency backup. It is protected from hardwired power.

### Power Consumption:

Typical: 18µA

During alarming: 18mA

How to order: Specify AL for alarm kit or ALHW alarm kit with optional hardwire and relay output.

### Panic rated device -

Position 1: On/Armed

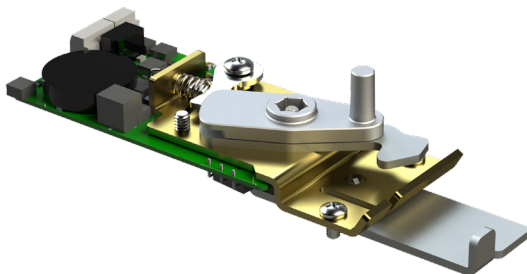
Position 2: Off

Position 3: Off & Dogged

### Fire Rated Device -

Position 1: On/Armed

Position 2: Off



## Electrified Options

### 6W 99 - Electrified Locking/Unlocking Trim

For ordering information see trim section



#### Operation

Field selectable operation - Fail Safe (Unlocked when power removed) or Fail Secure (Locked when power removed). Key allows entry but does not change state of lock.

#### Features

- Motorized locking/unlocking
- Field changeable from Fail Secure (Default) to Fail Safe
- AC or DC input voltage.
- Works with rim, surface vertical rod and concealed vertical rod devices.
- Two (2) year warranty
- Designed and assembled in the USA, Lancaster, PA.

#### Electrical Specifications

- Non-polarized power leads
- Power requirements: 12-24VDC/VAC  $\pm$  10%
- Average in-rush current: 12-24VDC/VAC: 1A for 1 second
- Average holding current: 12-24VDC: 5mA after 30 seconds  
12-24VAC: 15mA after 30 seconds
- Power must be applied for a minimum of 5 seconds

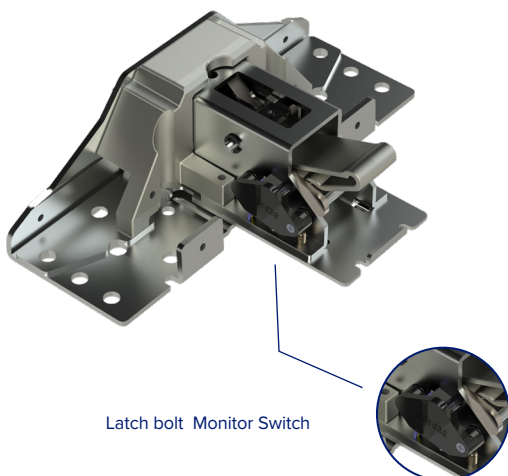
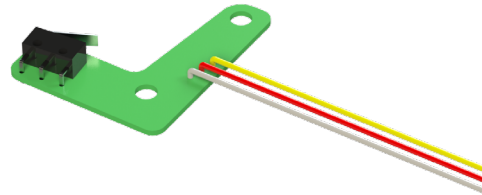
### SS - Signal Switch/REX - Request to exit

#### Operation:

Monitors push bar operation. NO or NC operation.

#### Electrical Specifications:

Single Pull Double Throw (SPDT): 125VAC – 3A  
30VDC – 3A



Latch bolt Monitor Switch

### LM - Latch bolt Monitor Switch

#### Operation:

Monitors latch status. Available on Rim, SVR, CVR and Mortise. NO or NC operation.

#### Electrical Specifications:

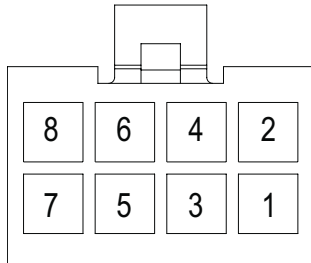
Single Pull Double Throw (SPDT): 125VAC – 3A  
30VDC – 3A

# Electrified Options

## ISMC - Industry Standard Molex Connector

### Operation:

Molex type connectors for simpler wiring



Terminal insertion end shown for ISMC connector (PDQ P/N 88850)

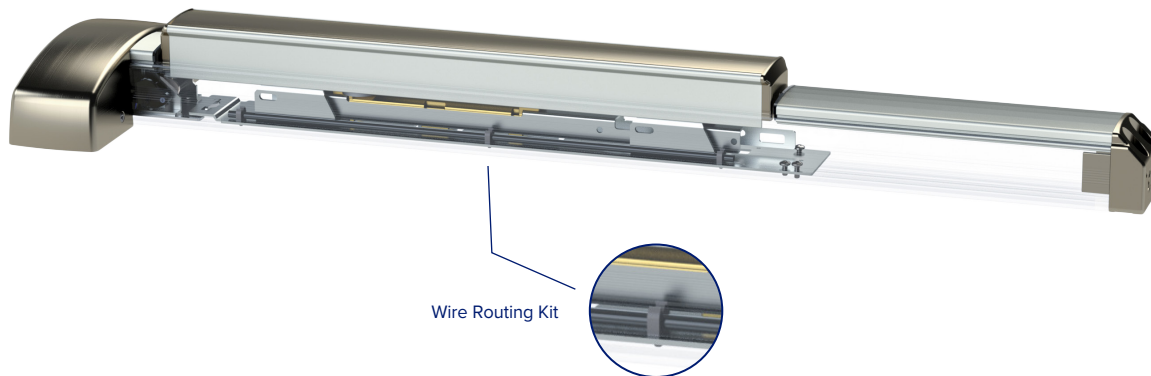
Function	Wire Color	Optional ISMC Pin#
Power*	White/Blue	1
Power*	White/Blue	2
REX(COM)	Yellow	3
REX(N/O)	Red	4
REX(N/C)	Gray	5
LM(COM)	Black	6
LM(N/O)	Brown	7
LM(N/C)	Blue	8

\*Power wires are non-polar

## Wire Routing Kit

Included with Latch bolt Monitor Switch, 6W99 Trim, and available as a kit.

**Description:** Safely route wires through device where they will not be pinched.





## Electrified Options

### 6300/6400 Electrical Options

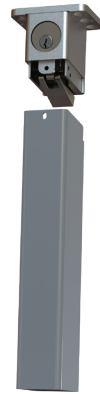
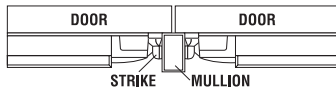
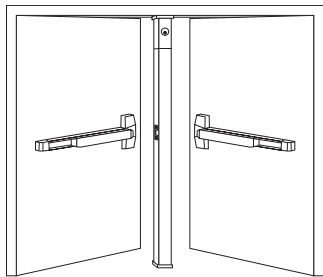
PART	DESCRIPTION	EXIT DEVICE ADJUSTMENT
AL	Alarmed Exit	\$302
LM	Latch Bolt Monitoring	\$208
MLR	Motorized Latch Retraction	\$914
SS	Signal Switch - Request to Exit or touch bar Monitoring	\$156
ALHW	Alarmed Exit with Hard Wire Power and Relay	\$422
ISM	Industry Standard Molex Connector (order in addition to other electrified options)	\$120

# 9300 Mullion

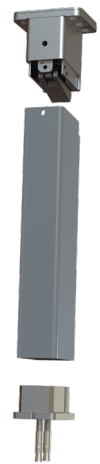
## Specifications

<b>Mullion Head/Foot brackets:</b>	• Cast Stainless Steel
<b>Tube Dimensions:</b>	• Powder Coated 2" x 3" Steel - 3/16" Wall
<b>Strike:</b>	• 639080 Strike included for Fire Labeled • Strike not included for panic mullion. Use supplied strike with exit device.
<b>Size:</b>	• 8' or 10' lengths - Can easily be cut to shorter size in field
<b>Finish:</b>	• Powder Coated 689 (Aluminum) - can be painted
<b>Electrified Options:</b>	• Wire routing w/ plugs
<b>Warranty:</b>	• One (1) year limited warranty
<b>Certifications: Compliances: Listings:</b>	• Fire model is 3 hour fire labeled for pairs up to and including 8' x 8' (With 6300RF/6400RF Rim Device) • Meets requirements of the Buy American Act

## Orientation



Key Removable



Non Key Removable

## Mullions - Key Removable

PART	DESCRIPTION	689
9300-689	Mullion, 8' non-fire rated and under opening height (can be cut down to non standard opening height)	\$1305
9300F-689	Mullion, 8' Listed to UL10C for Fire and under opening height (can be cut down to non standard opening height)	\$1721
9310-689	Mullion, 10' and under opening height (can be cut down to non standard opening height)	\$1416
9310F-689	Mullion, 10' Listed to UL10C for Fire and under opening height (can be cut down to non standard opening height)	\$1832

## Mullions - Non Key Removable

PART	DESCRIPTION	689
9301-689	Mullion, 8' and under opening height (can be cut down to non standard opening height)	\$1224
9301F-689	Mullion, 8' Listed to UL10C for Fire and under opening height (can be cut down to non standard opening height)	\$1639
9311-689	Mullion, 10' and under opening height (can be cut down to non standard opening height)	\$1334
9311F-689	Mullion, 10' Listed to UL10C for Fire and under opening height (can be cut down to non standard opening height)	\$1750

### Notes:

1. Fire Rated mullion listed only when used with PDQ's 6300/6400 Fire Rated Devices. Use with any other device will void UL Fire Rating.
2. Mullions shipped UPS will be assessed an \$8.00 handling up charge.
3. Rim Cylinder sold separately.




# 9300 Mullion

## How to order

DEVICE TYPE	FOR DOOR HEIGHT	REMOVABLE TYPE	RATING	OPTIONS
93	0	0	—	—
<b>93</b> - Mullion	<b>0</b> - 8' and under Door <b>1</b> - 10' and under Door	<b>0</b> - Key Removable <b>1</b> - Non Key Removable	<b>Blank</b> - Non Fire Rated <b>F</b> - Fire Rated	<b>EM</b> - Electrified Mullion

## Key Removable Only

CYLINDER TYPE	KEYWAY	KEYING
D	SCC	KD
<b>D</b> Default <b>L</b> Less Cylinder <b>SF6</b> Lock is SFIC prepped w/ 6 pin core <b>SF7</b> Lock is SFIC prepped w/ 7 pin core <b>SFL</b> Lock is SFIC prepped but less core <b>SFC</b> Lock is SFIC prepped w/ construction core <b>SFP</b> Lock is SFIC prepped w/ plastic construction core <b>LF6</b> Lock is Schlage LFIC prepped w/ Schlage core <b>LFL</b> Lock is Schlage LFIC prepped but less core <b>LFC</b> Lock is Schlage LFIC prepped w/ construction core	<b>SCC</b> – Schlage C <b>OTHERS</b> – See Keyway Table Page 22	<b>KD</b> – Keyed Different <b>KA</b> – Keyed Like <b>KO</b> - Zero Bitted <b>MK</b> – Master Keyed <b>CMK</b> – Construction Keyed <b>GMK</b> – Grand Master Keyed

CYLINDER OPTIONS	ICON	LOCK ADJUSTMENT
SFL		N/C
LFL		\$10.00
D		N/C

IC Core not included.

## 639081 - Mullion Storage Kit

- Kit includes items necessary to mount/store mullion on the wall when not in use.



## Accessories

PART	DESCRIPTION	PART LIST PRICE
631617	Mullion Fire Strike (Includes fasteners)	\$79
639081	Mullion Storage Kit	\$299

Note: Strike sold as replacement only. Must provide Order number of previous purchased item.

Parts discount applies.

## Electrified Mullion

PART	DESCRIPTION	689
9300-689-EM	Mullion, removable by cylinder, 8' and under opening height (can be cut down to non standard opening height), Factory electrified routing prep using Industry standard molex connectors	\$1865
9300F-689-EM	Mullion, Listed to UL10C for Fire, removable by cylinder, 8' and under opening height (can be cut down to non standard opening height), Factory electrified routing prep using Industry standard molex connectors	\$2281
9301-689-EM	Mullion, removable by use of hex key, 8' and under opening height (can be cut down to non standard opening height), Factory electrified routing prep using Industry standard molex connectors	\$1784
9301F-689-EM	Mullion, Listed to UL10C for Fire, removable by use of hex key, 8' and under opening height (can be cut down to non standard opening height), Factory electrified routing prep using Industry standard molex connectors	\$2199
9310-689-EM	Mullion, removable by cylinder, 10' and under opening height (can be cut down to non standard opening height), Factory electrified routing prep using Industry standard molex connectors	\$1976
9311-689-EM	Mullion, removable by use of hex key, 10' and under opening height (can be cut down to non standard opening height), Factory electrified routing prep using Industry standard molex connectors	\$2392

Notes:

1. Fire Rated mullion listed only when used with PDQ's 6300/6400 Fire Rated Devices. Use with any other device will void UL Fire Rating.
2. Mullions shipped UPS will be assessed an \$8.00 handling up charge.
3. Rim Cylinder sold separately.



SECURING  
CONFIDENCE  
**OPENING**  
**POSSIBILITIES**

**Phone:** 800.441.9692

**Tech Support:** 833.273.7832

**Email:** [help@pdqlocks.com](mailto:help@pdqlocks.com)

**Headquarters:** 2230 Embassy Drive, Lancaster, PA 17603  
P.O. Box 6426, Lancaster, PA 17607

**Regional Distribution Centers:** Lancaster, PA | Norcross, GA  
Kansas City, MO | Auburn, WA

[pdqlocks.com](https://pdqlocks.com)