

# 6300C - PANIC & 6300CF - FIRE LABELED STEEL DOOR - CVR EXIT DEVICE MODELS

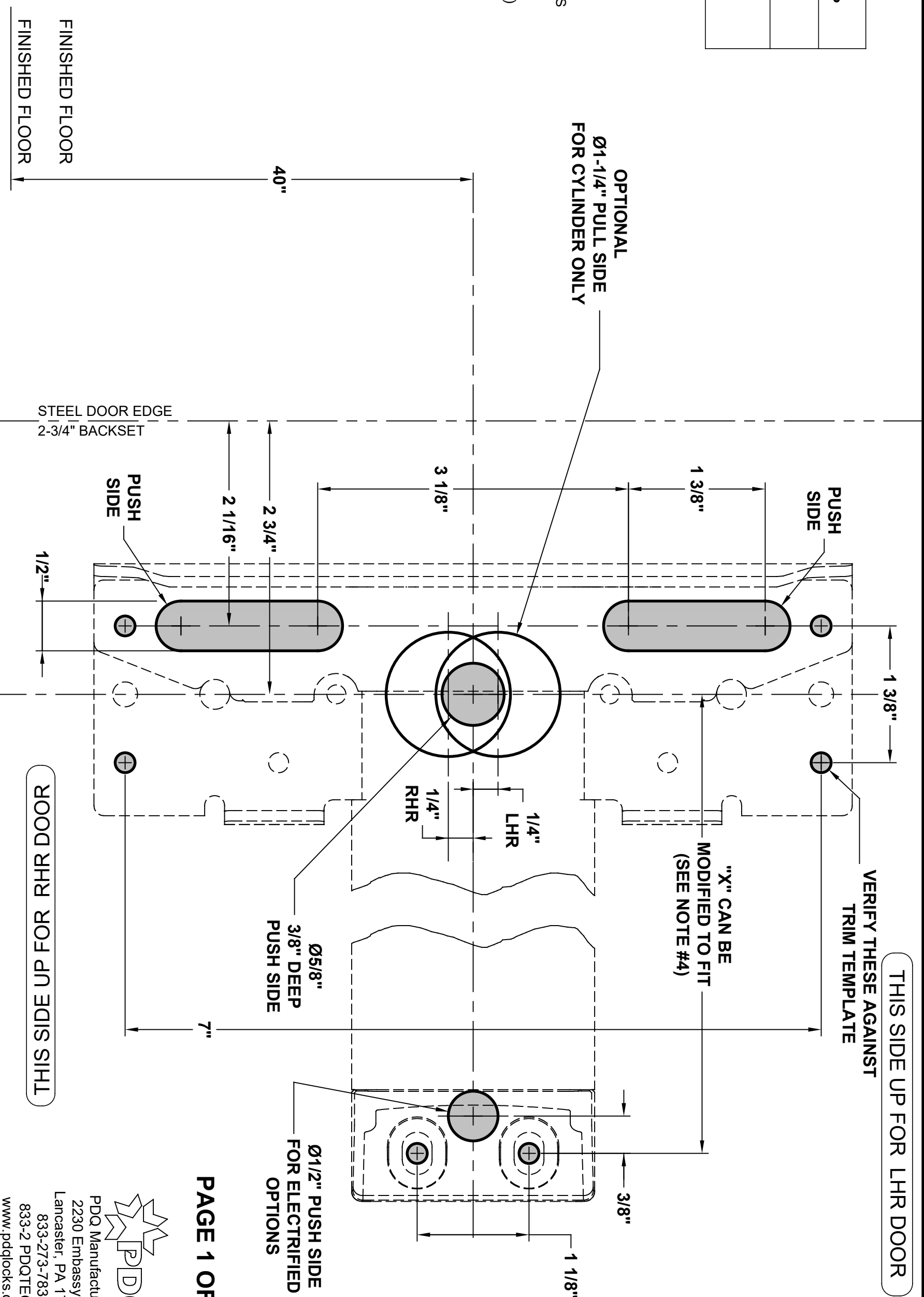
6300 SERIES EXIT DEVICES USING SNB OR SURFACE MOUNT FASTENERS

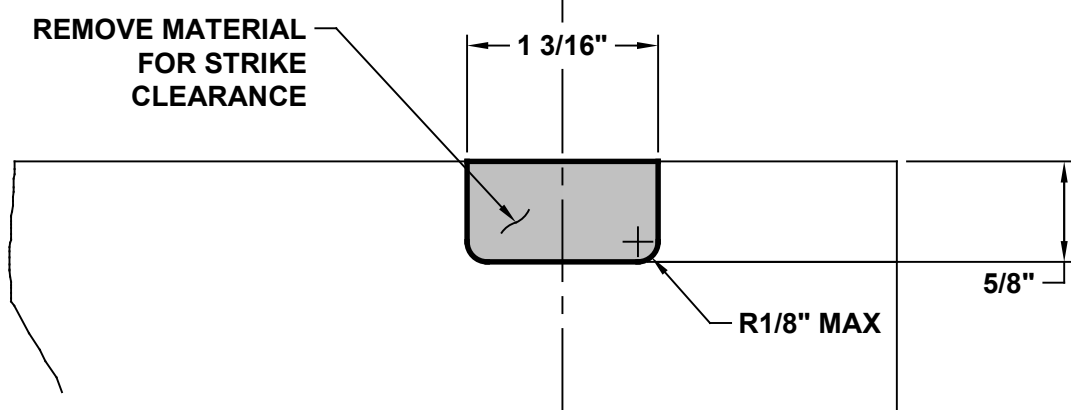
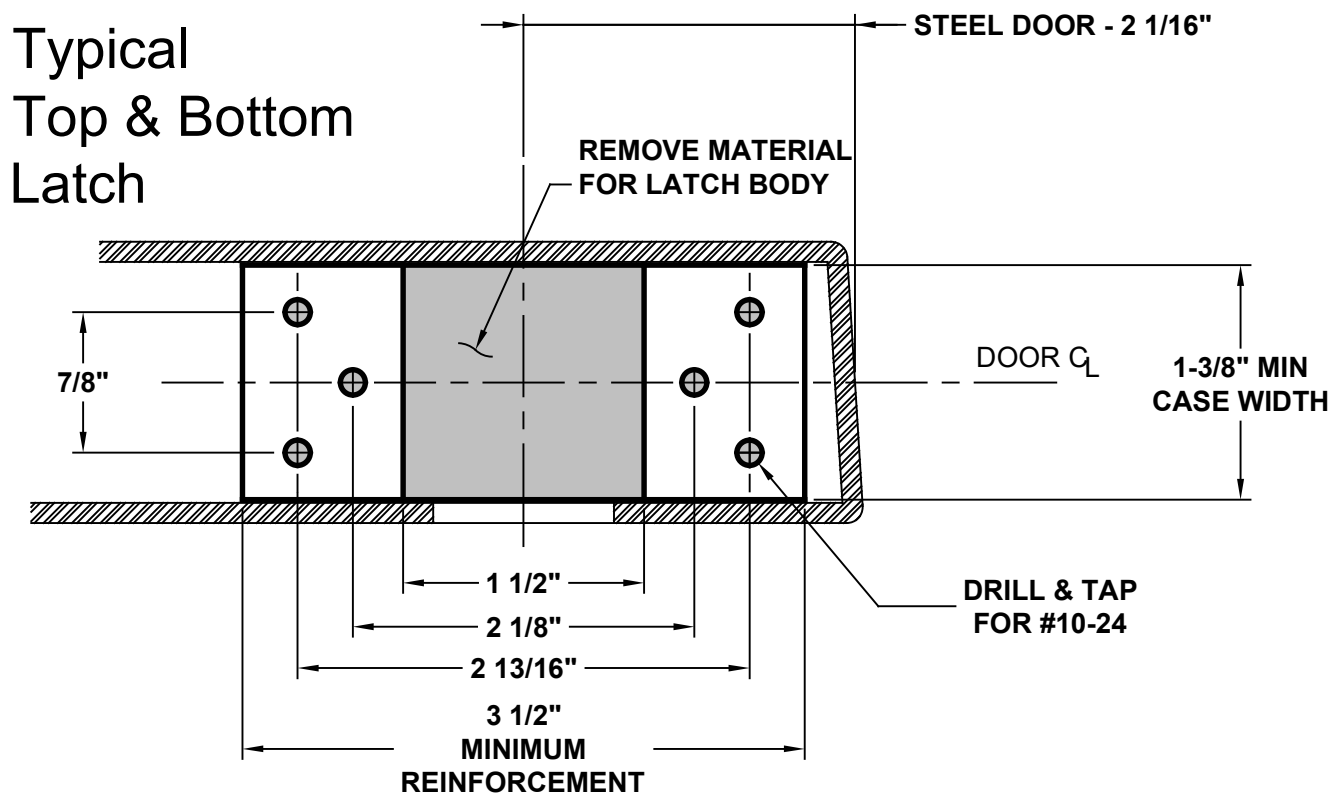
TEMPLATE: 639310  
REV. 1 03-03-22

<b>DEVICE</b>
<b>MACHINE SCREWS:</b> USE #7 OR 13/64" DRILL AND 1/4-20 TAP
<b>WOOD SCREWS:</b> USE 5/32" DRILL
<b>SEX NUTS:</b> USE 3/8" DRILL PULL SIDE USE 9/32" DRILL PUSH SIDE

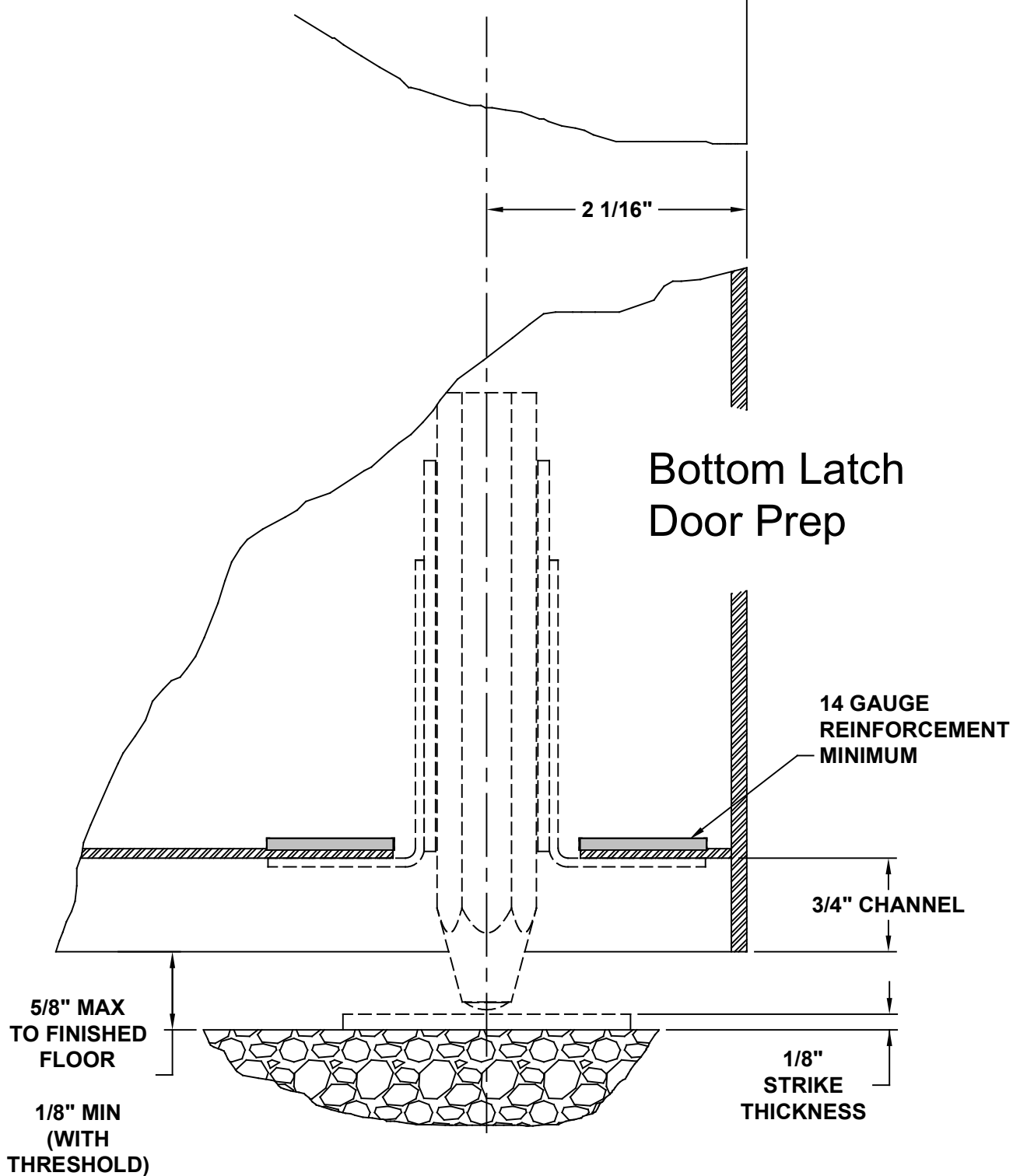
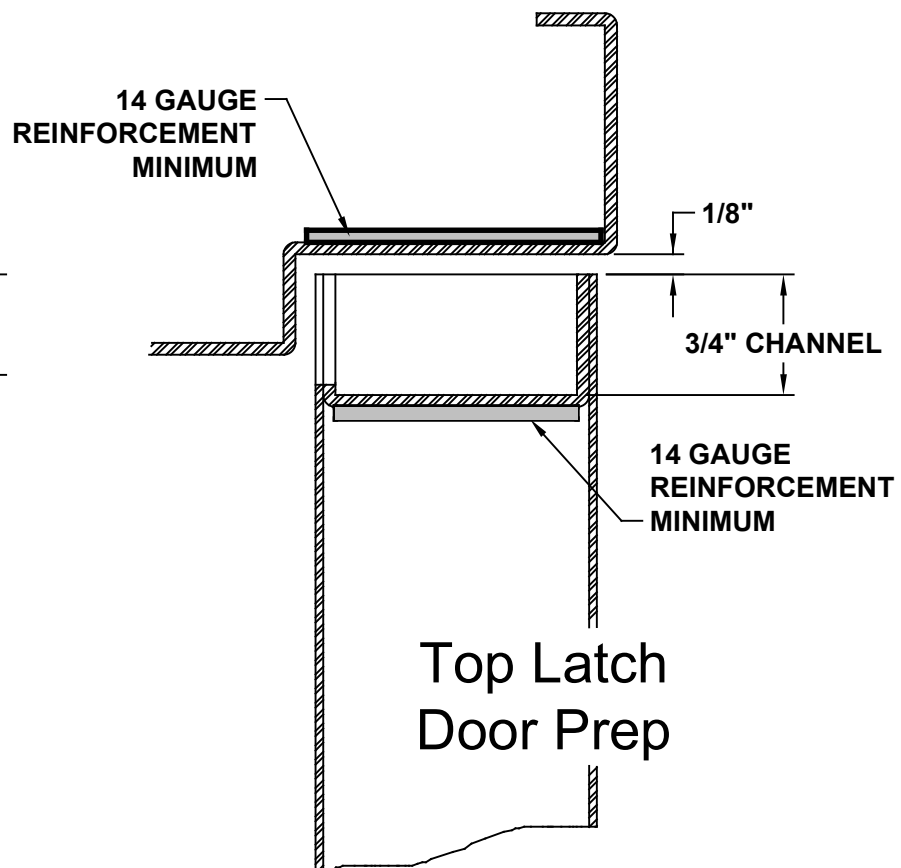
**NOTES:**

1. VERIFY PRINTED TO SCALE
2. SEX NUTS MAY BE REQUIRED FOR UNREINFORCED DOORS OR COMPOSITE FIRE DOORS. CONSULT DOOR MANUFACTURERS RECOMMENDATIONS
3. SEE TRIM TEMPLATE (IF APPLICABLE) FOR RELATED MACHINING DETAILS
4. DIMENSION "X" SIZED FOR DOOR. REFER TO DEVICE INSTRUCTIONS WHEN CUTTING DOWN FOR NARROWER OPENING
5. CHECK PDQ WEBSITE FOR MOST RECENT REVISION [WWW.PDQLOCKS.COM](http://WWW.PDQLOCKS.COM)
6. MINIMUM STILE WIDTH:  
2 3/4" BACKSET: 4 1/8"





Top Latch Only -  
Cut Strike Clearance  
On Push Side Door Face



NOTES:

1. THIS PAGE NOT TO SCALE
2. STRIKE REINFORCEMENTS MUST BE MINIMUM 14GA STEEL.
3. BOTTOM LATCH LOCATION ASSUMES TYPICAL 5/8" UNDERCUT.
  - a. BOTTOM OF DOOR TO FINISHED FLOOR TO BE 5/8" MAX.
  - b. MINIMUM 1/8" GAP FROM 1/2" THRESHOLD.
  - c. FOR BOTTOM DOOR GAP UNDER 5/16" OR WITH THRESHOLD, USE UPPER PIN HOLE IN BOTTOM ROD.
4. CHECK PDQ WEBSITE FOR MOST RECENT REVISION [WWW.PDQLOCKS.COM](http://WWW.PDQLOCKS.COM)



# 6300C - PANIC & 6300CF - FIRE LABELED ALUMINUM DOOR - CVR EXIT DEVICE MODELS

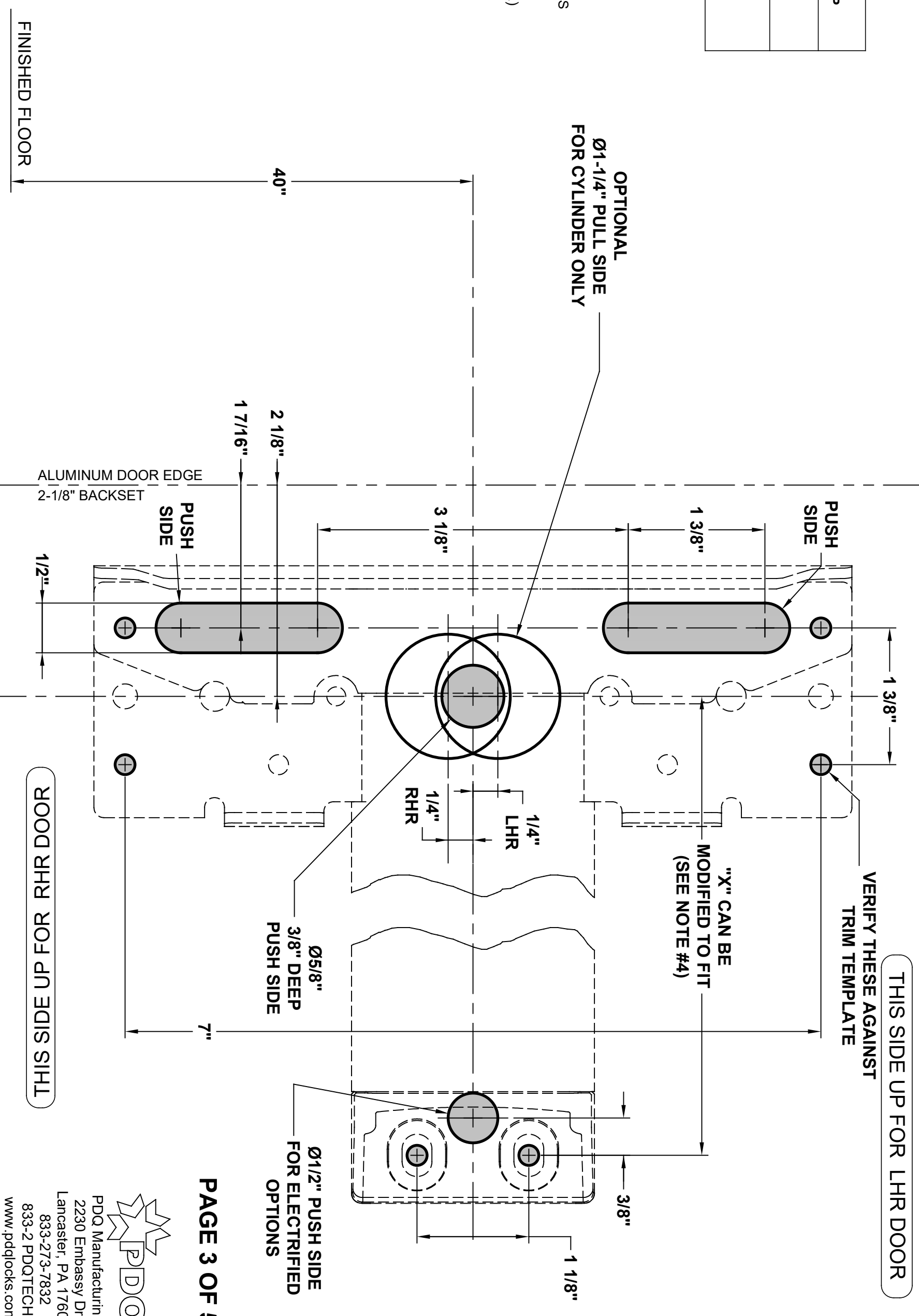
## 6300 SERIES EXIT DEVICES USING SNB OR SURFACE MOUNT FASTENERS

TEMPLATE: 639310  
REV. 1 03-03-22

<b>DEVICE</b>
<b>MACHINE SCREWS:</b> USE #7 OR 13/64" DRILL AND 1/4-20 TAP
<b>WOOD SCREWS:</b> USE 5/32" DRILL
<b>SEX NUTS:</b> USE 3/8" DRILL PULL SIDE USE 9/32" DRILL PUSH SIDE

**NOTES:**

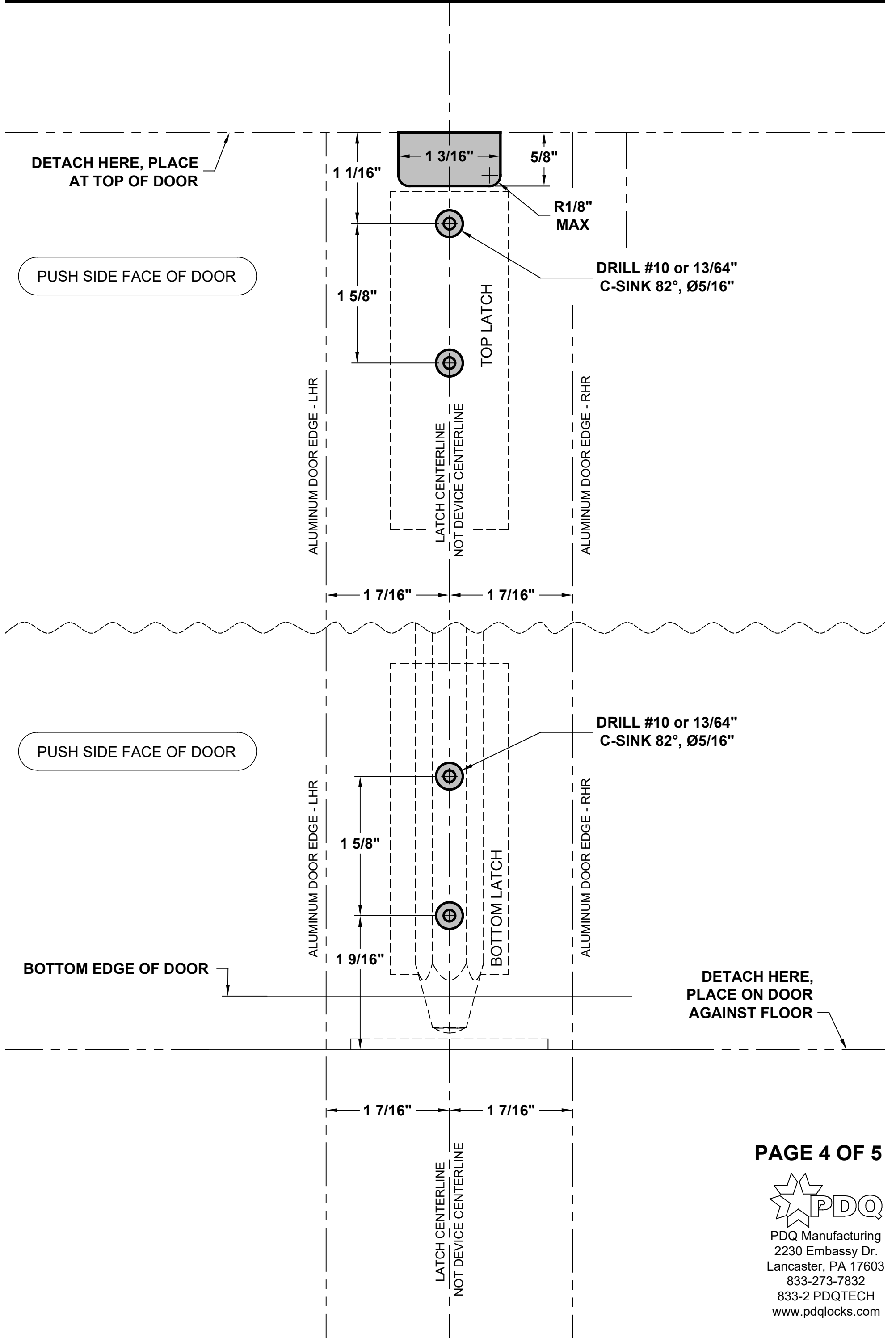
1. VERIFY PRINTED TO SCALE
2. SEX NUTS MAY BE REQUIRED FOR UNREINFORCED DOORS OR COMPOSITE FIRE DOORS. CONSULT DOOR MANUFACTURERS RECOMMENDATIONS
3. SEE TRIM TEMPLATE (IF APPLICABLE) FOR RELATED MACHINING DETAILS
4. DIMENSION "X" SIZED FOR DOOR. REFER TO DEVICE INSTRUCTIONS WHEN CUTTING DOWN FOR NARROWER OPENING
5. CHECK PDQ WEBSITE FOR MOST RECENT REVISION [WWW.PDQLOCKS.COM](http://WWW.PDQLOCKS.COM)
6. MINIMUM STILE WIDTH: 2-1/8" BACKSET: 3-1/2"



# CVR LATCH - ALUMINUM DOOR

FOR 6300 SERIES EXIT DEVICES

TEMPLATE: 639310  
REV. 1 03-03-22

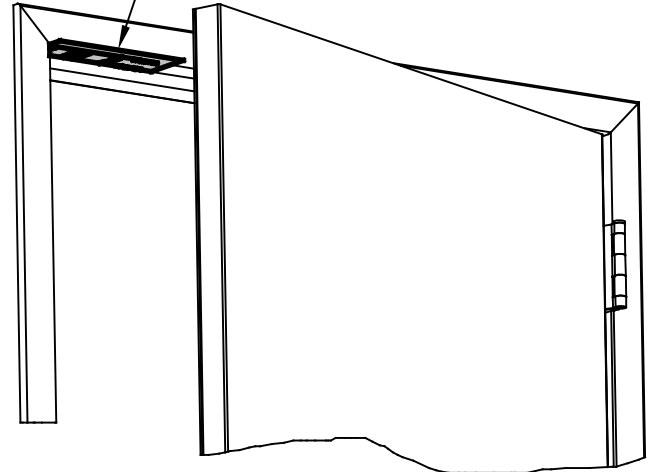


**TOP STRIKE**

**MACHINE SCREWS:**  
**USE #25 OR 5/32" DRILL & #10-24 TAP**

**Top Strike  
 Frame Prep**

**CUT TEMPLATE,  
 PLACE ON FRAME  
 AGAINST DOOR STOP**



LATCH CENTERLINE

7/16"

PULL SIDE DOOR EDGE

**DETACH HERE, PLACE  
 ABOVE DOOR &  
 AGAINST STOP**

9/16"

**DRILL AND TAP  
 AFTER STRIKE  
 ADJUSTMENT**

PUSH SIDE DOOR EDGE

**DETACH HERE &  
 PLACE ON FLOOR**

PULL SIDE DOOR EDGE

**Ø1"  
 3/4" DEEP**

7/8"

1"

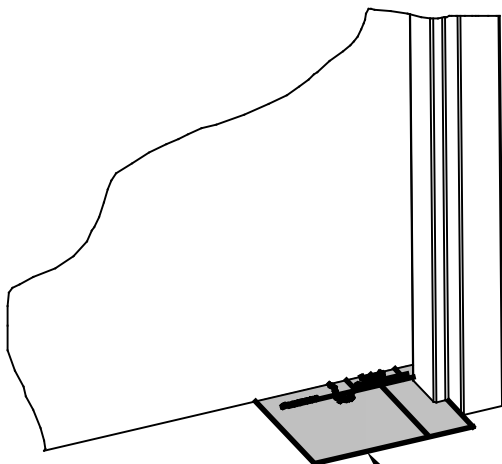
PUSH SIDE DOOR EDGE

**Ø1/4  
 1" DEEP FOR  
 INCLUDED ANCHOR**

1 3/4"

**Bottom Strike  
 Floor Prep**

LATCH CENTERLINE



**CUT TEMPLATE  
 PLACE ON FLOOR  
 ALIGNED WITH DOOR**

