

6300D DUMMY EXIT DEVICE

TEMPLATE: 639303
REV. 0 3/22/22

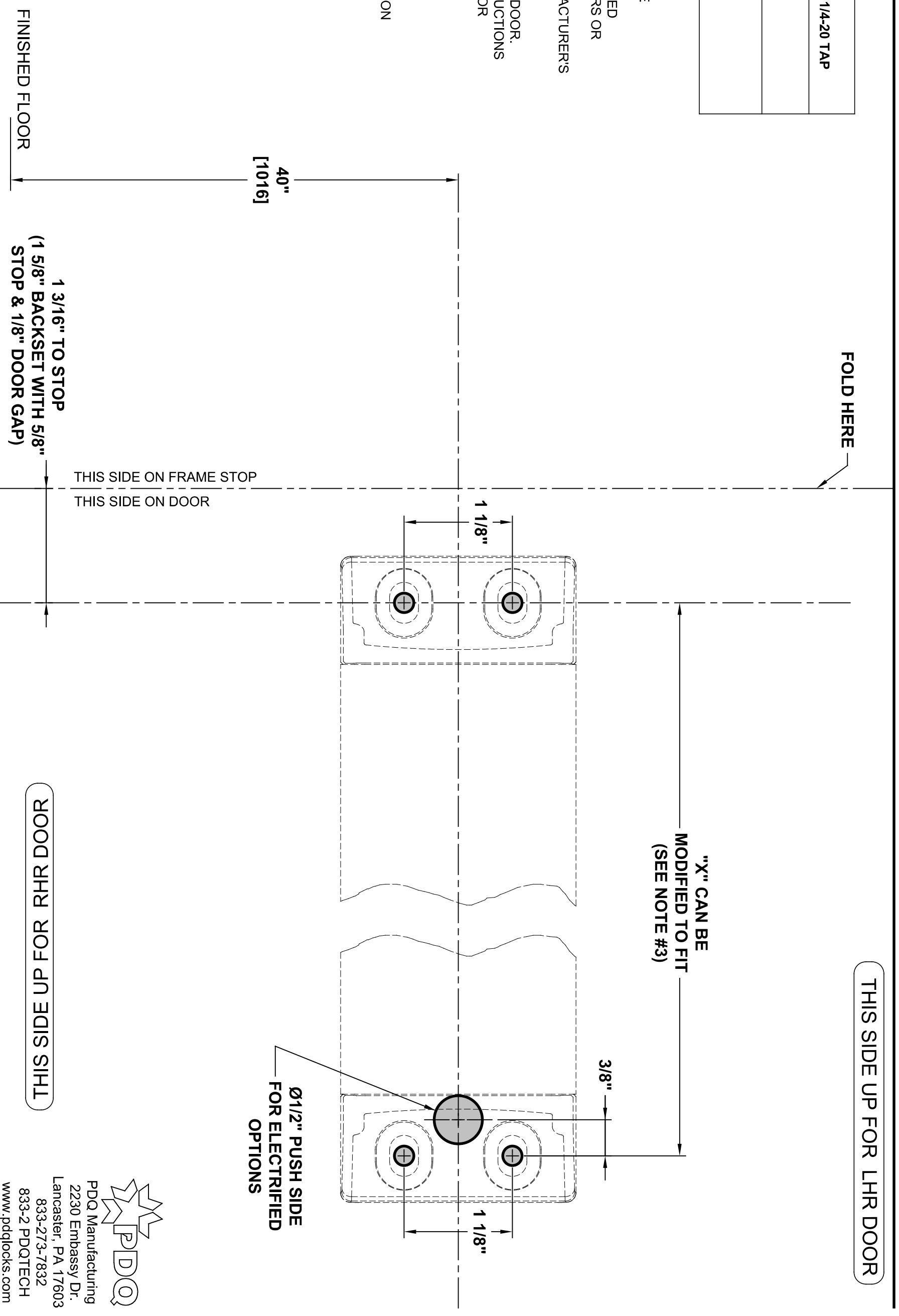
6300 SERIES EXIT DEVICES USING SNB OR SURFACE MOUNT FASTENERS

DEVICE

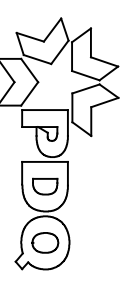
MACHINE SCREWS: USE #7 OR 13/64" DRILL AND 1/4-20 TAP
WOOD SCREWS: USE 5/32" DRILL
SEX NUTS: USE 3/8" DRILL PULL SIDE USE 9/32" DRILL PUSH SIDE

NOTES:

1. VERIFY PRINTED TO SCALE
2. SEX NUTS MAY BE REQUIRED FOR UNREINFORCED DOORS OR COMPOSITE FIRE DOORS. CONSULT DOOR MANUFACTURER'S RECOMMENDATIONS
3. DIMENSION "X" SIZED FOR DOOR. REFER TO DEVICE INSTRUCTIONS WHEN CUTTING DOWN FOR NARROWER OPENING
4. MINIMUM STILE WIDTH: 3"
5. CHECK PDQ WEBSITE FOR MOST RECENT REVISION
WWW.PDQLOCKS.COM



DOOR RHR FOR RHR DOOR



PDQ Manufacturing
2230 Embassy Dr.
Lancaster, PA 17603
833-273-7832
833-2 PDQTECH
www.pdqlocks.com