

6300R - PANIC & 6300 RF - FIRE LABELED RIM EXIT DEVICES FOR HVHZ

TEMPLATE: 639316
REV. 0 1/20/22

6300 SERIES EXIT DEVICES USING SNB OR SURFACE MOUNT FASTENERS

DEVICE

MACHINE SCREWS:

USE #7 OR 13/64" DRILL AND 1/4-20 TAP

WOOD SCREWS:

USE 5/32" DRILL

SEX NUTS:

USE 3/8" DRILL PULL SIDE

USE 9/32" DRILL PUSH SIDE

STRIKE - ON FRAME

MACHINE SCREWS:

USE #25 OR 5/32" DRILL AND #10-24 TAP

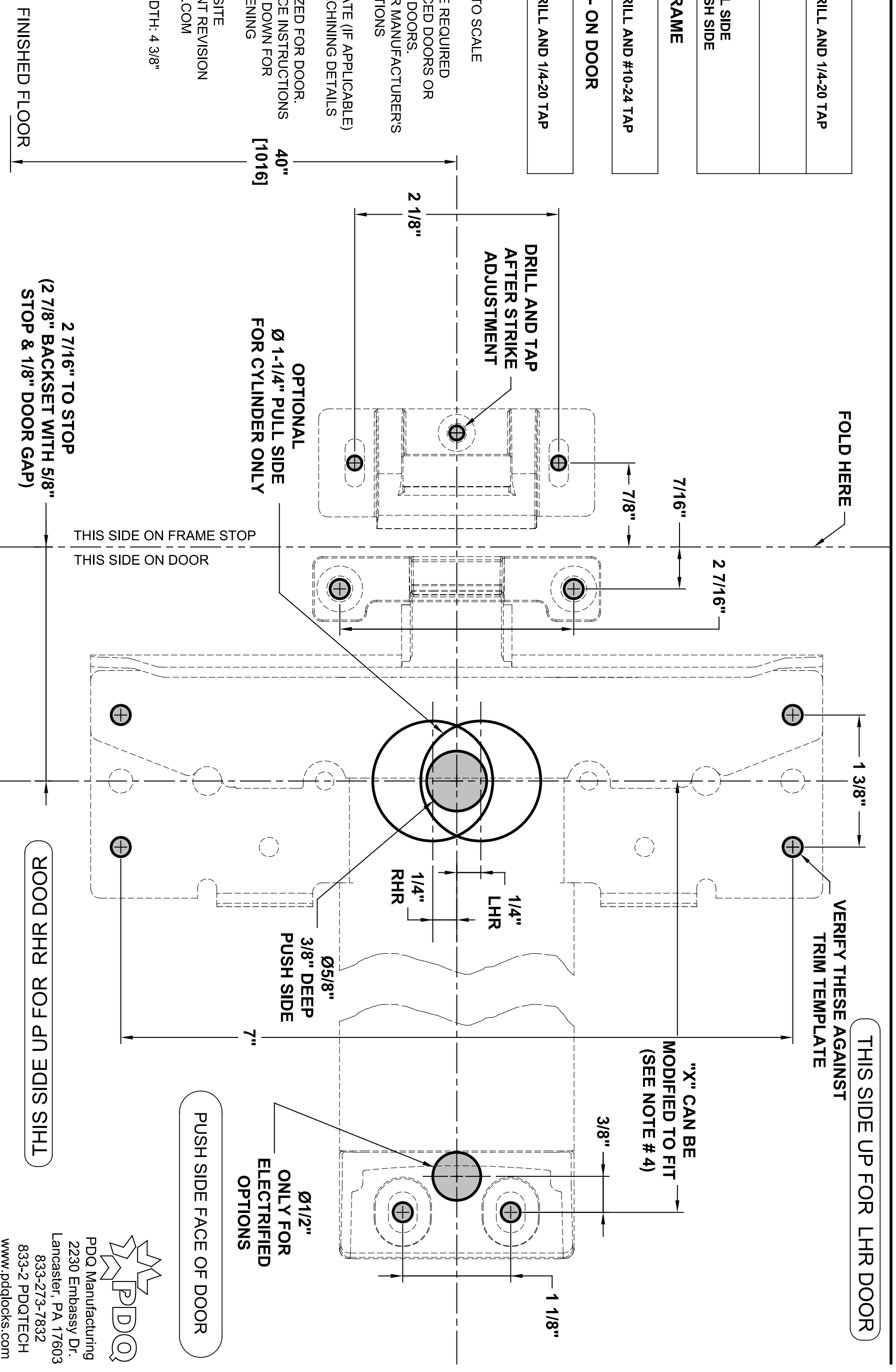
STRIKE HOOK - ON DOOR

MACHINE SCREWS:

USE #7 OR 13/64" DRILL AND 1/4-20 TAP

NOTES:

1. VERIFY PRINTED TO SCALE
2. SEX NUTS MAY BE REQUIRED FOR UNREINFORCED DOORS OR COMPOSITE FIRE DOORS. CONSULT DOOR MANUFACTURER'S RECOMMENDATIONS
3. SEE TRIM TEMPLATE (IF APPLICABLE) FOR RELATED MACHINING DETAILS
4. DIMENSION "X" SIZED FOR DOOR. REFER TO DEVICE INSTRUCTIONS WHEN CUTTING DOWN FOR NARROWER OPENING
5. CHECK PDO WEBSITE FOR MOST RECENT REVISION
WWW.PDQLOCKS.COM
6. MINIMUM STILE WIDTH: 4 3/8"



2 7/16" TO STOP
(2 7/8" BACKSET WITH 5/8"
STOP & 1/8" DOOR GAP)

THIS SIDE ON FRAME STOP
THIS SIDE ON DOOR

"X" CAN BE
MODIFIED TO FIT
(SEE NOTE # 4)

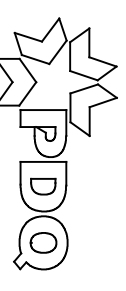
VERIFY THESE AGAINST
TRIM TEMPLATE

THIS SIDE UP FOR LHR DOOR

Ø1/2"
ONLY FOR
ELECTRIFIED
OPTIONS

PUSH SIDE FACE OF DOOR

DOOR RHR FOR PDN EDIS SIHL



PDQ Manufacturing
2230 Embassy Dr.
Lancaster, PA 17603
833-273-7832
833-2 PDQTECH
www.pdqlocks.com