

6300V - PANIC & 6300VF - FIRE LABELED SURFACE VERTICAL ROD EXIT DEVICES

TEMPLATE: 639302
REV. 0 01-07-21

6300 SERIES EXIT DEVICES USING SNB OR SURFACE MOUNT FASTENERS

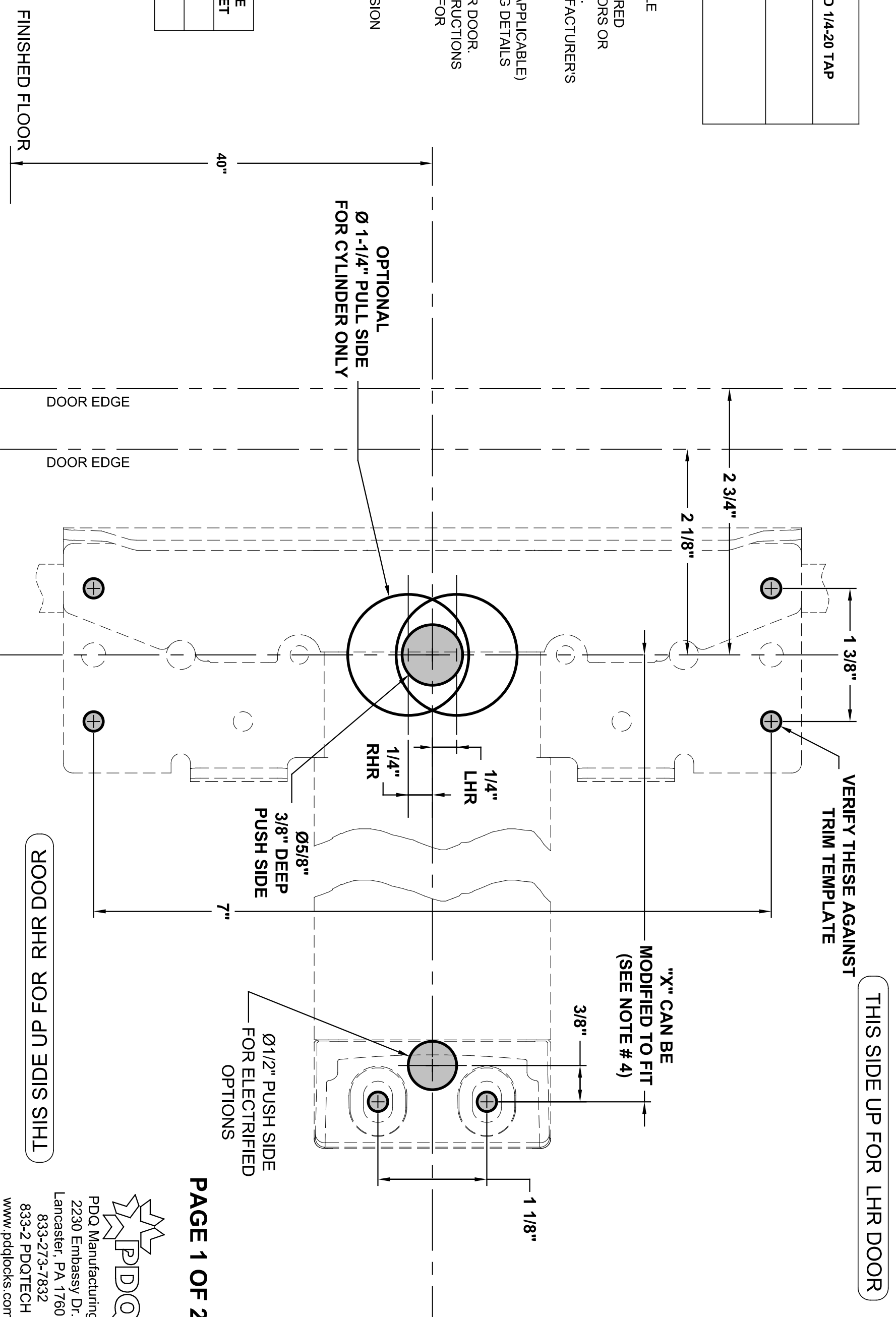
DEVICE

MACHINE SCREWS: USE #7 OR 13/64" DRILL AND 1/4-20 TAP
WOOD SCREWS: USE 5/32" DRILL
SEX NUTS: USE 3/8" DRILL PULL SIDE USE 9/32" DRILL PUSH SIDE

NOTES:

1. VERIFY PRINTED TO SCALE
2. SEX NUTS MAY BE REQUIRED FOR UNREINFORCED DOORS OR COMPOSITE FIRE DOORS. CONSULT DOOR MANUFACTURER'S RECOMMENDATIONS
3. SEE TRIM TEMPLATE (IF APPLICABLE) FOR RELATED MACHINING DETAILS
4. DIMENSION "X" SIZED FOR DOOR. REFER TO DEVICE INSTRUCTIONS WHEN CUTTING DOWN FOR NARROWER OPENING
5. CHECK PDQ WEBSITE FOR MOST RECENT REVISION
WWW.PDQLOCKS.COM

MINIMUM STILE WIDTH	DEVICE BACKSET
4 1/4"	2 3/4"
3 1/2"	2 1/8"



TOP STRIKE

MACHINE SCREWS:
USE #25 OR 5/32" DRILL
AND #10-24 TAP

**FOLD HERE, PLACE
AGAINST DOOR & STOP**

7/16"

1 3/8"

**DRILL AND TAP
AFTER STRIKE
ADJUSTMENT**

TOP/BOTTOM LATCH TO DOOR

MACHINE SCREWS:
USE #7 OR 13/64" DRILL AND 1/4-20 TAP

WOOD SCREWS:
USE 5/32" DRILL

SEX NUTS:
USE 3/8" DRILL PULL SIDE
USE 9/32" DRILL PUSH SIDE

1 5/16"

**DRILL AND TAP
TOP LATCH TO DOOR**

1 3/4"

TOP LATCH

DOOR EDGE - LHR

DOOR EDGE - LHR

DOOR EDGE - RHR

DOOR EDGE - RHR

1 7/16"

1 7/16"

2 1/16"

2 1/16"

PUSH SIDE FACE OF DOOR

1 3/4"

**DRILL AND TAP
BOTTOM LATCH TO DOOR**

BOTTOM LATCH

1 11/16"

BOTTOM EDGE OF DOOR

DOOR EDGE

FINISHED FLOOR

**FOLD HERE, PLACE
AGAINST FLOOR & DOOR**

13/16"

BOTTOM
STRIKE

Ø1"
3/4" DEEP

Ø1/4
1" DEEP

1"

1 3/4"

