

# 6400C & 6400CF CVR EXIT - 3-1/2"+ STILE DOOR

6400 SERIES EXIT DEVICES

TEMPLATE: 639327

REV. 0 03-18-22

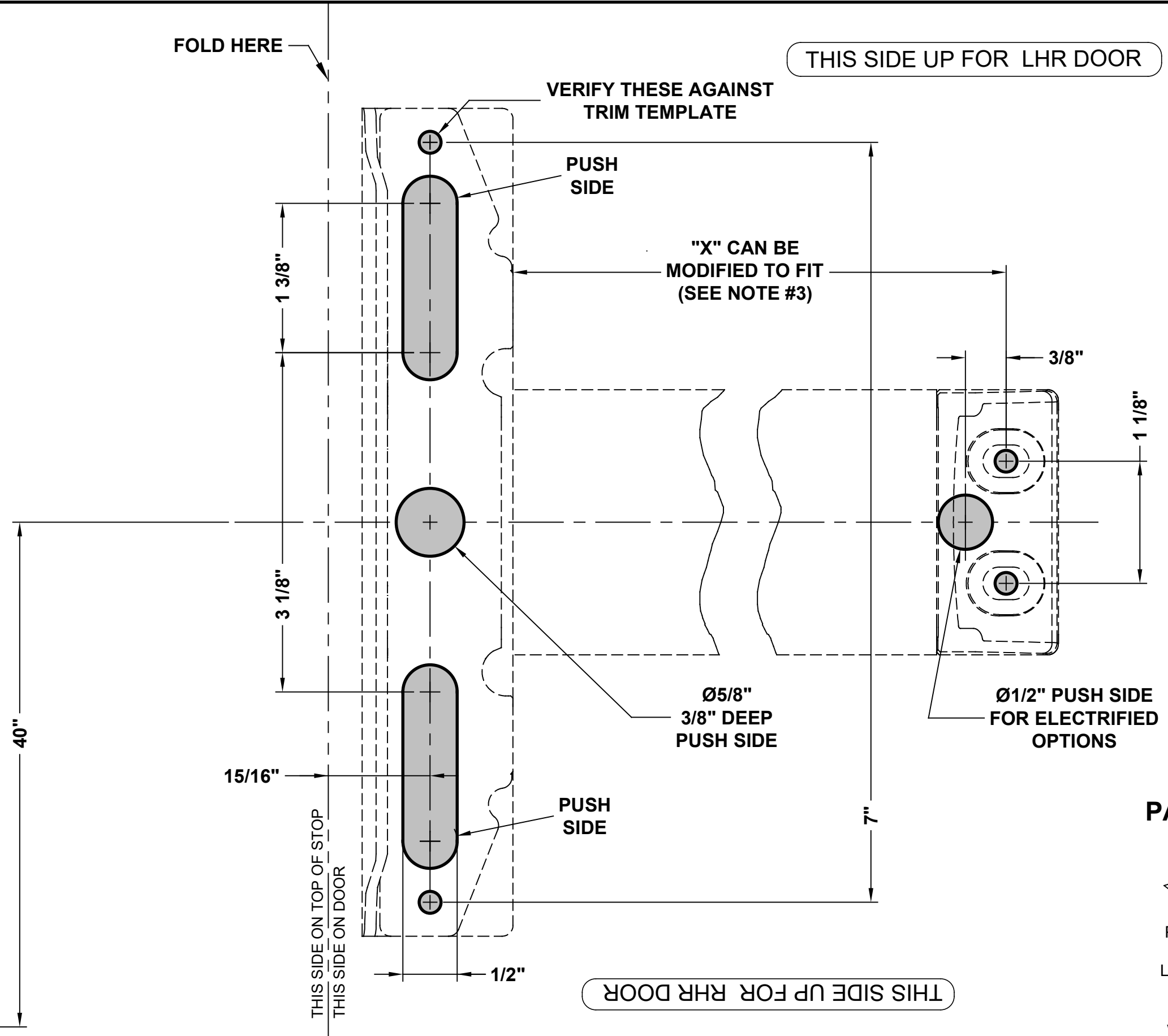
## DEVICE

**MACHINE SCREWS:**  
USE #7 OR 13/64" DRILL AND 1/4-20 TAP

### NOTES:

1. VERIFY PRINTED TO SCALE
2. SEE TRIM TEMPLATE (IF APPLICABLE) FOR RELATED MACHINING DETAILS
3. DIMENSION "X" SIZED FOR DOOR. REFER TO DEVICE INSTRUCTIONS WHEN CUTTING DOWN FOR NARROWER OPENING
4. CHECK PDQ WEBSITE FOR MOST RECENT REVISION WWW.PDQLOCKS.COM
5. MINIMUM STILE WIDTH: 3-1/2"

APPLICATION	BACKSET
HOLLOW METAL / WOOD	1-7/16"
ALUMINUM STOREFRONT	1-5/16"



PAGE 1 OF 3

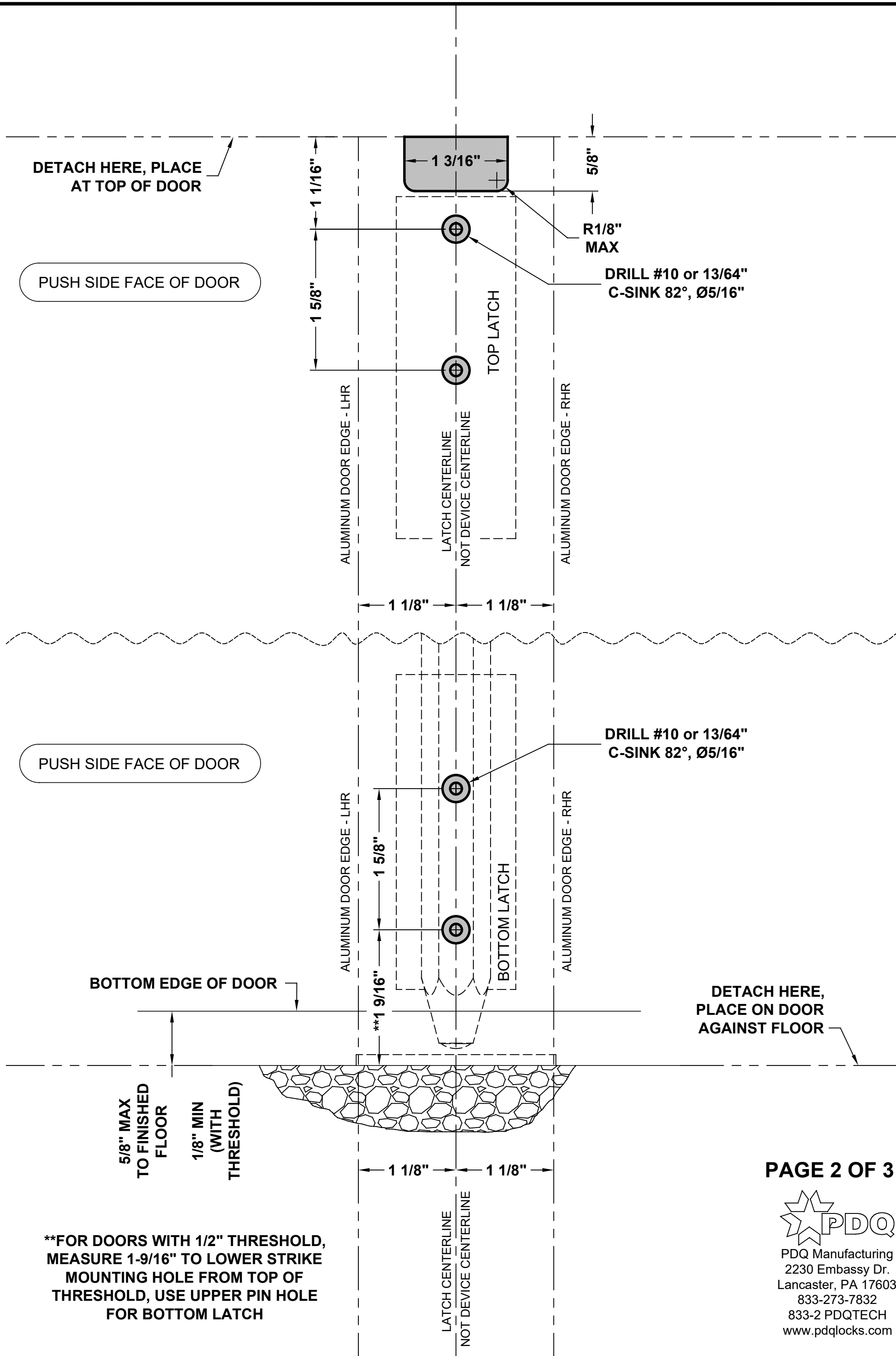


PDQ Manufacturing  
2230 Embassy Dr.  
Lancaster, PA 17603  
833-273-7832  
833-2 PDQTECH  
www.pdqlocks.com

# CVR LATCH - 3-1/2"+ STILE ALUM DOOR

FOR 6400 SERIES EXIT DEVICES

TEMPLATE: 639327  
REV. 0 03-18-22

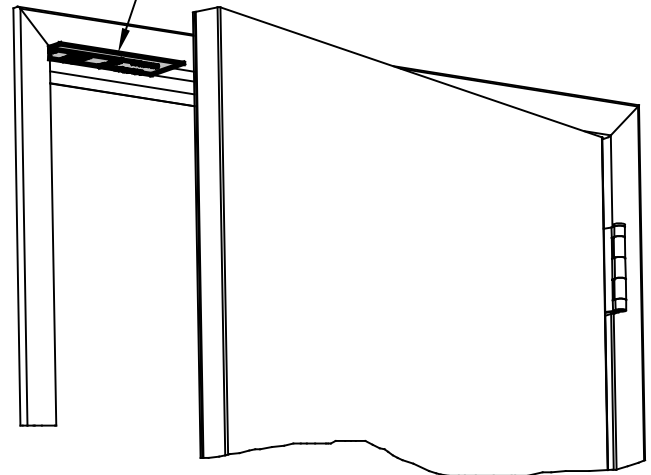


## TOP STRIKE

MACHINE SCREWS:  
USE #25 OR 5/32" DRILL & #10-24 TAP

## Top Strike Frame Prep

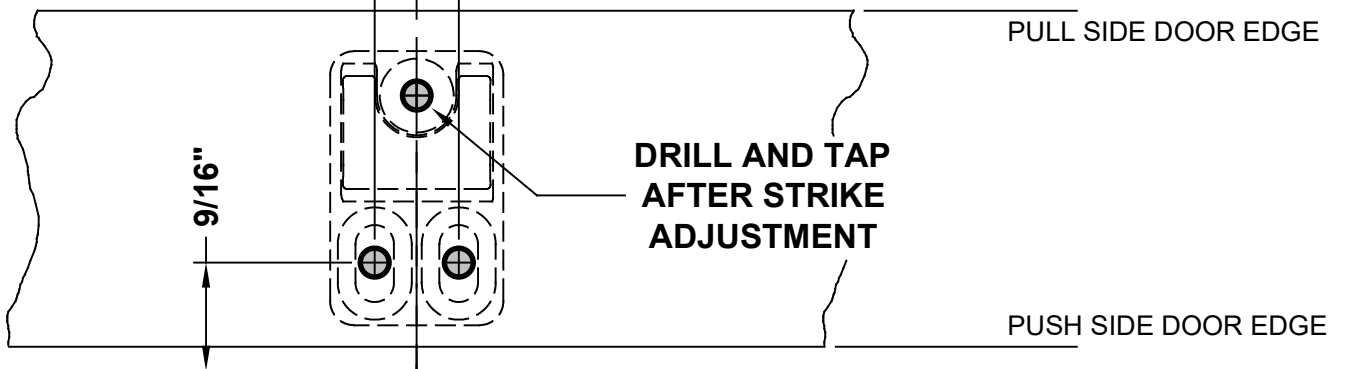
CUT TEMPLATE,  
PLACE ON FRAME  
AGAINST DOOR STOP



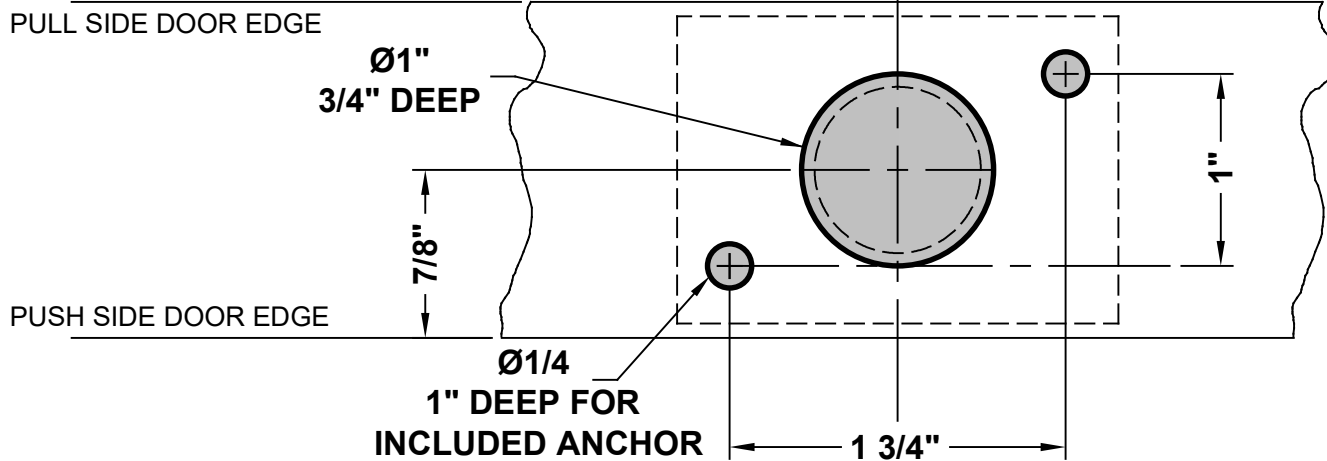
LATCH CENTERLINE  
NOT DEVICE CENTERLINE

7/16"

DETACH HERE, PLACE  
ABOVE DOOR &  
AGAINST STOP

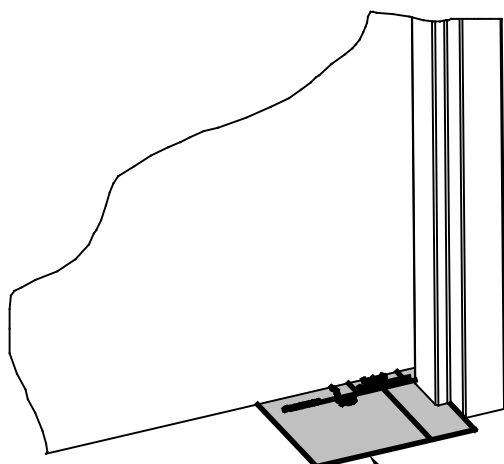


DETACH HERE &  
PLACE ON FLOOR



## Bottom Strike Floor Prep

LATCH CENTERLINE  
NOT DEVICE CENTERLINE



CUT TEMPLATE  
PLACE ON FLOOR  
ALIGNED WITH DOOR

