

**6400R - PANIC & 6400RF - FIRE LABELED
NARROW RIM EXIT DEVICES WITH 639027 PANIC OR 639057 FIRE STRIKE**

TEMPLATE: 639312
 REV. 0 1/20/22

6400 SERIES EXIT DEVICES USING SNB OR SURFACE MOUNT FASTENERS

- DEVICE
- MACHINE SCREWS:
 - USE #7 OR 13/64" DRILL AND 1/4-20 TAP
- WOOD SCREWS:
 - USE 5/32" DRILL
- SEX NUTS:
 - USE 3/8" DRILL PULL SIDE
 - USE 9/32" DRILL PUSH SIDE

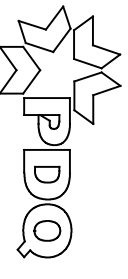
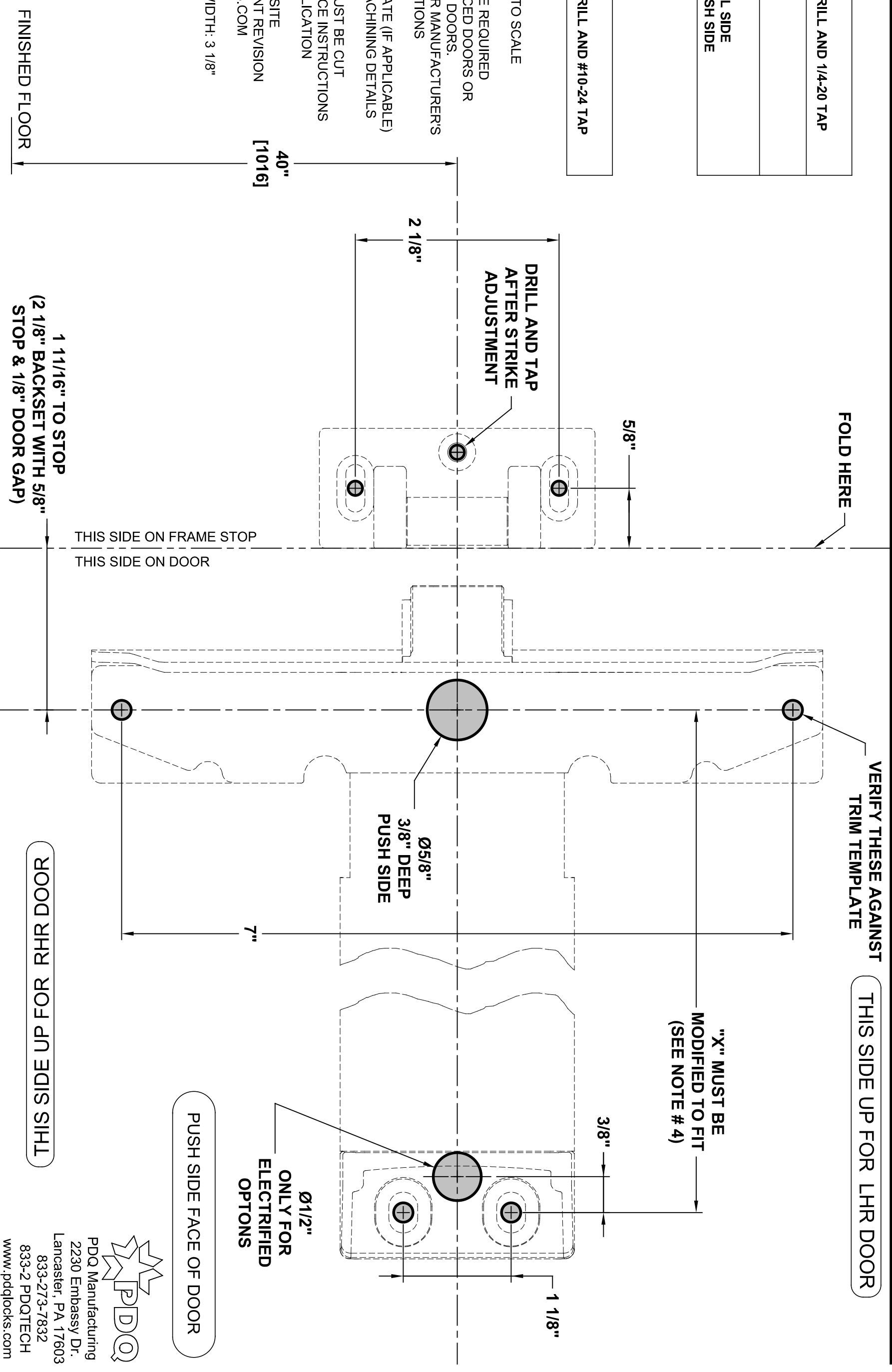
STRIKE

**MACHINE SCREWS:
USE #25 OR 5/32" DRILL AND #10-24 TAP**

NOTES:

1. VERIFY PRINTED TO SCALE
2. SEX NUTS MAY BE REQUIRED FOR UNREINFORCED DOORS OR COMPOSITE FIRE DOORS.
CONSULT DOOR MANUFACTURER'S RECOMMENDATIONS
3. SEE TRIM TEMPLATE (IF APPLICABLE) FOR RELATED MACHINING DETAILS
4. DIMENSION "X" MUST BE CUT REFER TO DEVICE INSTRUCTIONS FOR YOUR APPLICATION

5. CHECK PDQ WEBSITE
FOR MOST RECENT REVISION
WWW.PDQLOCKS.COM



PDQ Manufacturing
2230 Embassy Dr.
Lancaster, PA 17603
833-273-7832
833-2 PDQTECH
www.pdqlocks.com