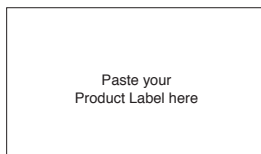


1 PLUG IN & POWER UP

PACKAGE CONTENTS

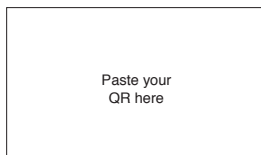
- 1: pdqSMART Range Extender
- 2: BLE Antenna
- 3: Power Supply 5V@1A
- 4: Quick Start Guide



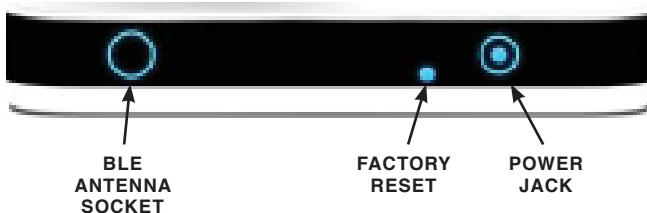
PRODUCT LABEL

PREREQUISITES

- 1: Active pdqSMART Server Account - <https://portal.stp-pdqsmart.com/>
Authenticate
- 2: Install pdqSMART-STP App on Smartphone
- 3: Add at least 1 pdqSMART-STP Lock to your account



QR CODE

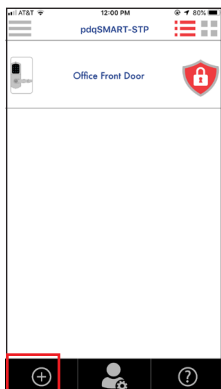


LED INDICATIONS:

EVENT	RED	WHITE	BLUE
Power On	Blink for 3 times	Blink for 3 times	Blink for 3 times
Factory Reset	Blink for 3 times	Blink for 3 times	Blink for 3 times
Bluetooth Connection	—	—	Blinking
Not Connected in network	—	—	Solid
Connected in network	OFF	OFF	OFF
Network request is in process	—	Blinking	—
Network request execute successfully	—	Solid for 3 Sec	—
Network request fail	Blink for 3 sec	—	—
Not Getting Network ID from Smart phone	Solid	—	—

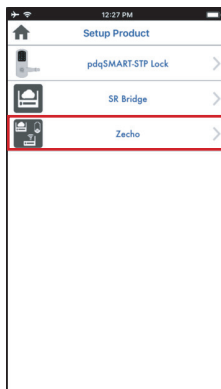
2

REGISTER pdqSMART RANGE EXTENDER TO PDQ SERVER



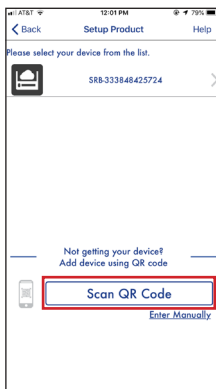
1

Launch pdqSMART-STP App on Smartphone. Tap **Circle Plus**



2

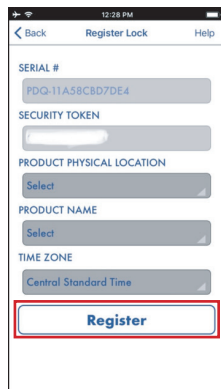
Tap **ZECHO**



3

Tap **SCAN QR CODE** and scan code.

*QR code is located under the device and front of this guide



4

Enter user-friendly device name and device location. Tap **Register**

Note:
If Range Extender is not able to connect with pdqSMART Network then please restart it and wait for 1 minute



pdqSMART tech support: 866-874-3662 or smartsupport@pdqlocks.com

For more information about PDQ: 800.441.9692