

DISTRIBUTED IN  
NORTH AMERICA BY



PEMKO



# HENDERSON

COMMERCIAL AND INDUSTRIAL  
SLIDING AND FOLDING DOOR HARDWARE



# Contents

## Industrial and Stainless Steel Track and Hardware Pg 53

Straight Sliding Industrial	→ 290-307 wood Door Hardware	Pg 54
Straight Sliding Industrial	→ 290-307 metal Door Hardware	Pg 56
Straight Sliding Commercial (Bottom Roller)	→ Mansion and Majestic Wood Door Hardware	Pg 62
Straight Sliding Industrial (Bottom Roller)	→ Sherwood 225-800 Wood Door Hardware	Pg 66
Straight Sliding Industrial (Bottom Roller)	→ Sherwood 225-800 Metal Door Hardware	Pg 70
Folding Industrial	→ Tangent 290-305 Folding Door Hardware	Pg 74
Round-the-Corner Industrial	→ Tangent 290-305 Round-The-Corner Door Hardware	Pg 78
Folding Partitions	→ Council 290-305 End Folding Door Hardware	Pg 82
Folding Partitions	→ Council 290-305 Center Folding Door Hardware	Pg 86
Folding Section Doors (Bottom Roller)	→ Arcade A70 End Folding and Center Folding Door Hardware	Pg 90
Overhead Runways	→ 280-305	Pg 94
Sliding Cantilever Gate Hardware	→ Titan	Pg 98

## Introduction to PC Henderson Pg 2

## Commercial Straight Sliding Systems Pg 3

Husky	→ 100 and 200 lbs.	Pg 4
Husky	→ Glass Panels up to 165 lbs.	Pg 6
Pacer	→ Wood and Metal Doors up to 440 lbs.	Pg 7
Pacer	→ Glass up to 285 lbs.	Pg 9
Flexirol	→ Wood, Metal, or Glass	Pg 12

## Commercial Folding Systems Pg 14

Husky	→ 55 and 100 lbs.	Pg 16
Pacer Centerfold	→ Wood Doors up to 165 lbs.	Pg 18
Pacer Endfold	→ Wood Doors up to 165 lbs.	Pg 20
Pacer Endfold	→ Glass Doors up to 99 lbs.	Pg 22
Pacer Endfold Exterior		Pg 24
Pacer Endfold Aluminum		Pg 26
Flexirol Centerfold		Pg 28
Flexirol Endfold Interior		Pg 30
Flexirol Endfold Exterior		Pg 32
Flexirol Endfold Aluminum		Pg 34
Flexirol Folding Glass		Pg 36

## Commercial Multidirectional Systems Pg 38

Pacer 135°	→ Wood and Aluminum Doors up to 264 lbs.	Pg 40
Pacer 135°	→ Glass Doors up to 264 lbs.	Pg 42
Flexirol 90°	→ Wood and Aluminum Doors up to 220 lbs.	Pg 44
Flexirol 90°	→ Glass Doors up to 220 lbs.	Pg 46
Flexirol 135°	→ Wood and Aluminum Doors up to 1100 lbs.	Pg 48
Flexirol 135°	→ Glass Doors up to 1100 lbs.	Pg 50

## Stainless Steel Straight Sliding Industrial Pg 100

Track, Guide Channel, Guides	→ 280/SS, 290/SS, 301/SS	Pg 101
Brackets	→ 1/SS, 1X/SS, 3/SS, 3X/SS	Pg 102
Hangers	→ 284/SS, 285/SS, 53/SS, 56/SS, 57/SS	Pg 104
Top-Hung (Wood or Metal Straight Sliding)	→ 280/SS	Pg 105
Top-Hung (Wood or Metal Straight Sliding)	→ 290/SS	Pg 106
Top-Hung (Wood or Metal Straight Sliding)	→ 301/SS	Pg 108

## Component Illustrations Pg 110

Components	→ Hinges, Brackets, Hangers, Pivot Sets, Guides, and Fittings	Pg 110
Track & Channel	→ 280-307 Track, 89-99 Channel	Pg 118
Track Brackets	→ Pacer, Flexirol, Husky	Pg 119
Hangers		Pg 120
Guides and Other Accessories		Pg 121
P C Henderson Advertising		Pg 122

## Product Index Pg 124

# HENDERSON

P C Henderson has long been acknowledged as the world leader in the design and manufacture of Sliding Gear Systems for residential, commercial and industrial applications.

Established in 1921, the company is a member of Cardo Door, the largest Business Area within Cardo AB, a major European engineering products group with an annual turnover in excess of £700 million.

P C Henderson is based in Bowburn in North East England and has subsidiaries in Holland and Ireland. The company has a long established sales and distribution network in over 70 countries, with head office support from Henderson's fully trained technical sales team.

The company is committed to quality and is registered to BS EN ISO 9002: 1994 Quality Systems.

## HENDERSON COMMERCIAL RANGE

The three models in the Henderson commercial range - Husky Glass, Pacer and Flexirol - are suitable for doors weighing up to 1100 lbs. (500kg). They are ideal for applications such as shop-fronts, hotels, conference centers and offices, where smooth action, high performance and aesthetics are important.

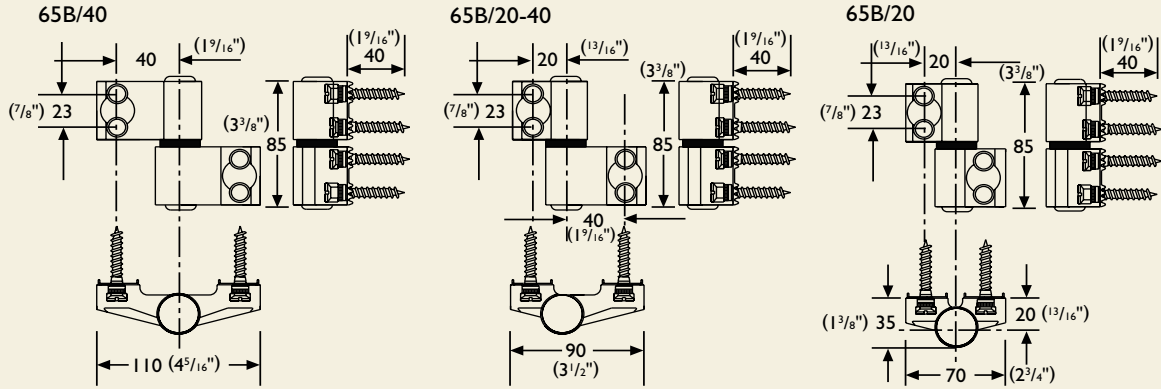
You can choose from wood, aluminum and glass door options, with straight sliding, folding and multidirectional stacking systems. Flexirol multidirectional systems can accommodate 90° and 135° movement. Pacer systems allow 135° movement.

Aluminum track can be painted on site to match interior colors and ceilings. Pacer track has the option of clip-on aluminum fascia.



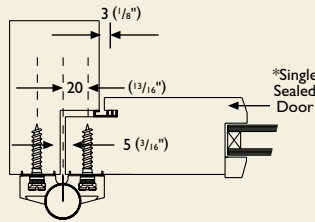
# COMPONENTS

## HINGES

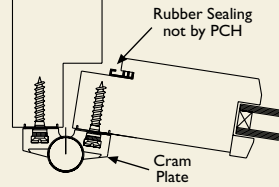


## HINGE INSTALLATION

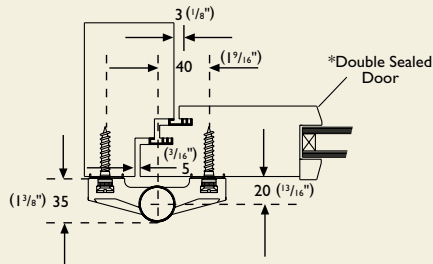
Standard Fixing to Post (Flush) Hinge 65B/20



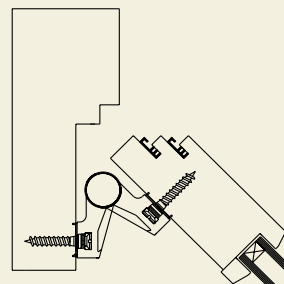
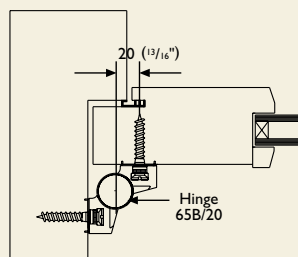
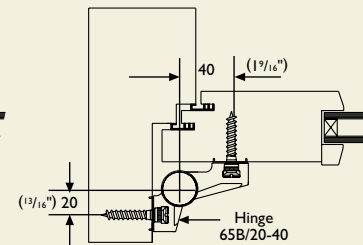
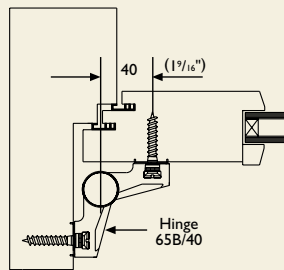
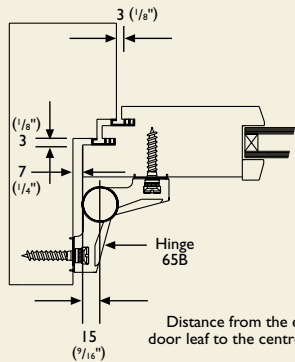
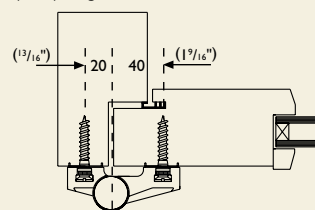
Door Just Folding



Standard Fixing to Post (Flush) Hinge 65B/40



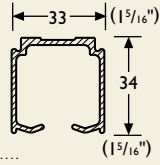
Standard Fixing to Post (Flush) Hinge 65B/20-40



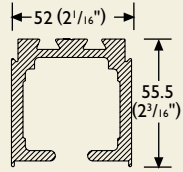


# TRACK, INTERSECTS AND CURVES

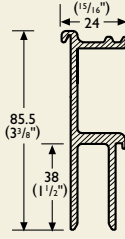
## Husky 280 A



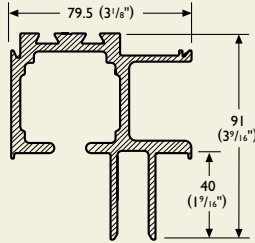
## Pacer 600 Track



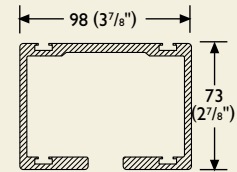
## Pacer 600 FP



## Pacer 600 CFP



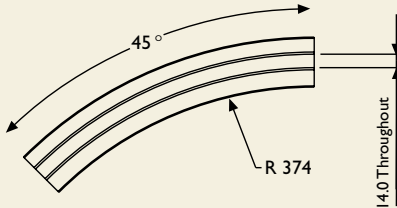
## Flexirol 550 Track



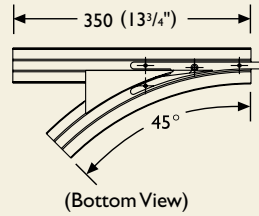
## PACER CURVES/INTERSECTS

### (Bottom Views)

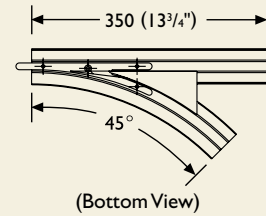
#### Pacer Curve 600 C



#### Pacer Switch 45R/600



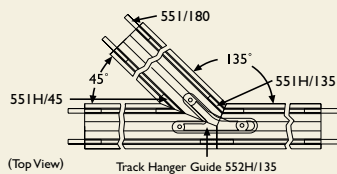
#### Pacer Switch 45L/600



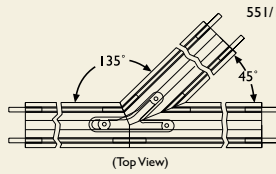
## FLEXIROL 556 JUNCTIONS/INTERSECTS

### (Top Views)

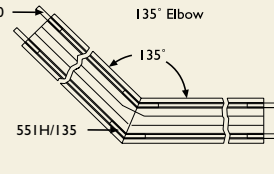
#### 45R/550



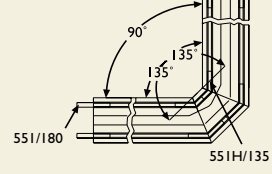
#### 45L/550



#### H135/550

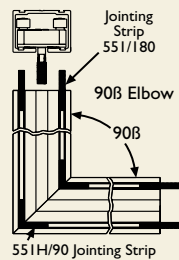


#### H90C/550

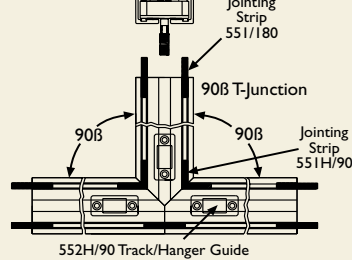


## FLEXIROL 555 JUNCTIONS/INTERSECTS

#### H90/550



#### TW/550

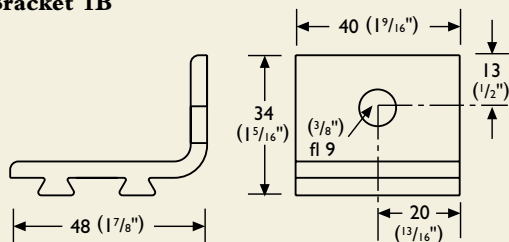


Pacer track supplied in mill finish as standard. Flexirol track supplied in mill finish and RAL 9010 as standard.

# BRACKETS

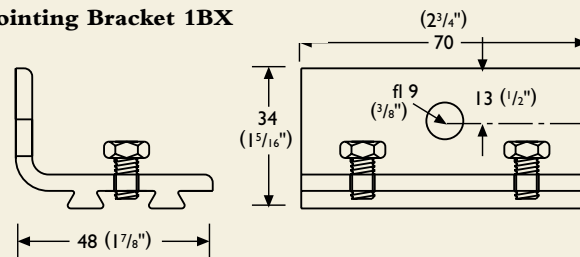
## Pacer

### Bracket 1B



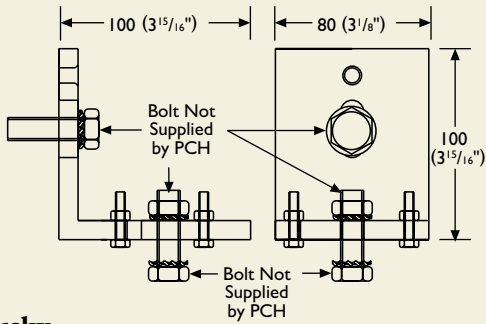
## Pacer

### Jointing Bracket 1BX

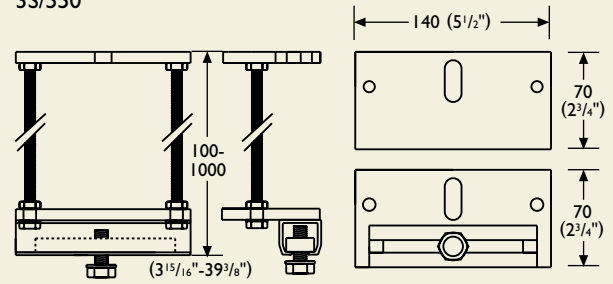


# BRACKETS

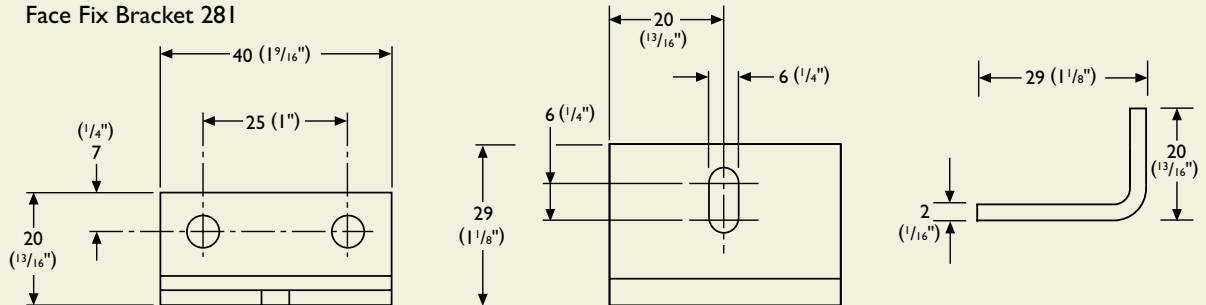
**Flexirol**  
1A/550



**Flexirol**  
3S/550



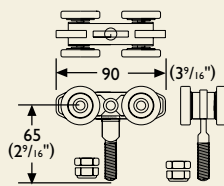
**Husky**  
Face Fix Bracket 28I



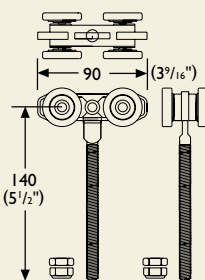
# HANGERS

## PACER HANGERS

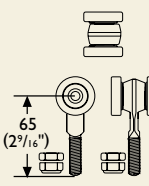
56B



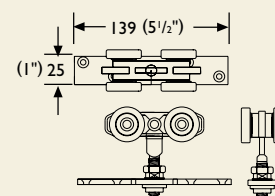
56BX



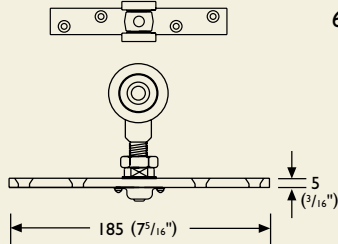
56 1/2 B



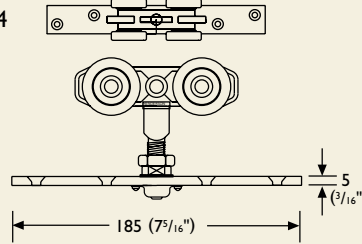
57B



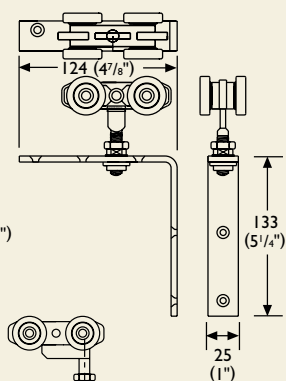
61B



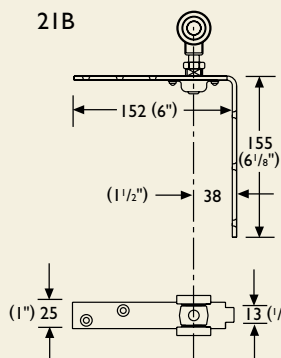
61B/4



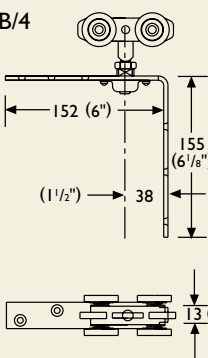
52B



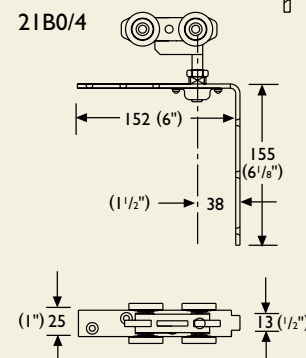
21B



21B/4

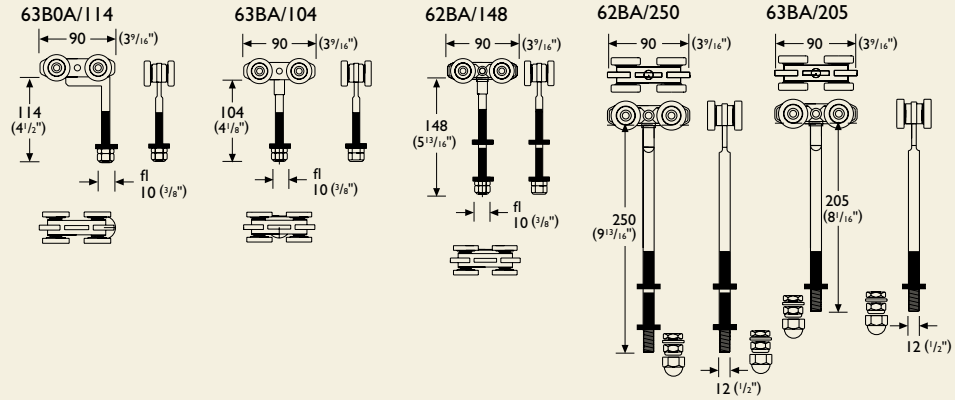


21B0/4

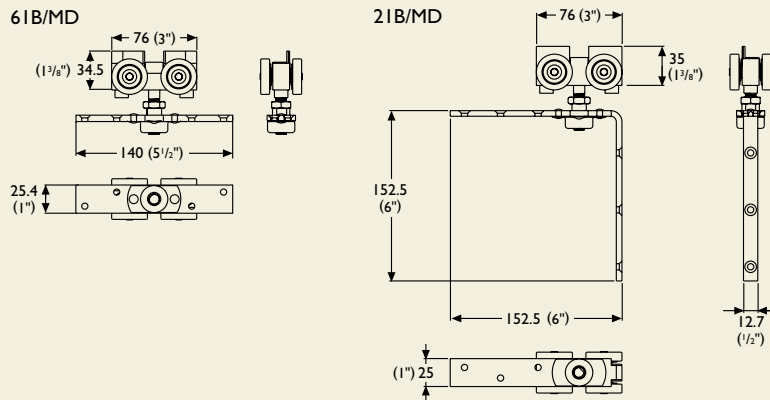


# HANGERS

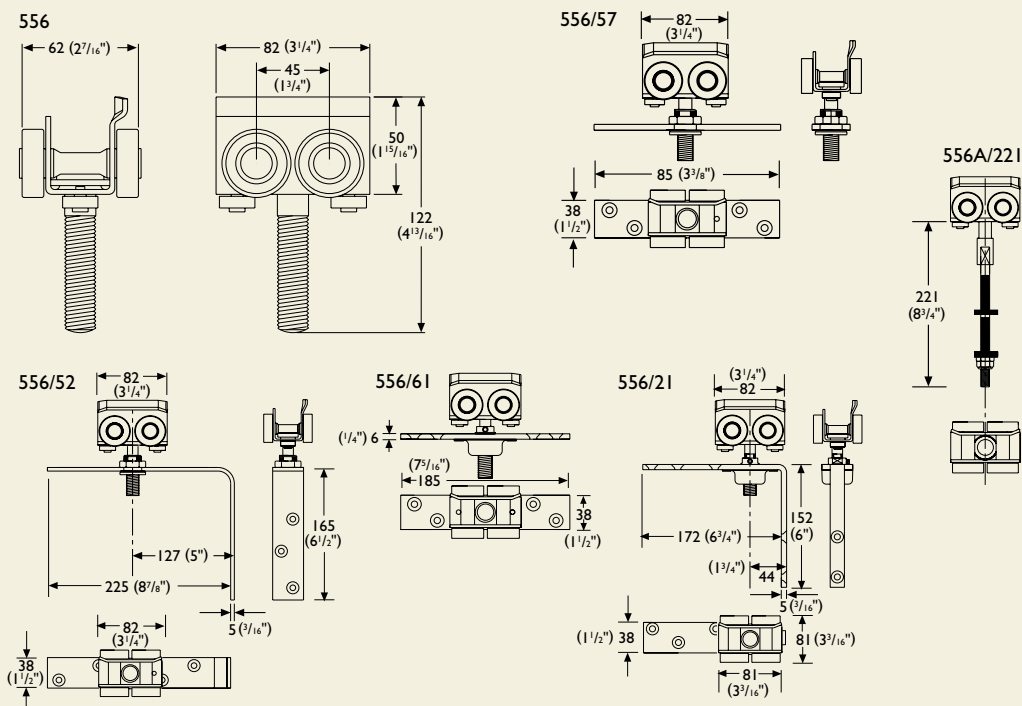
## PACER HANGERS



## PACER MULTIDIRECTIONAL HANGERS

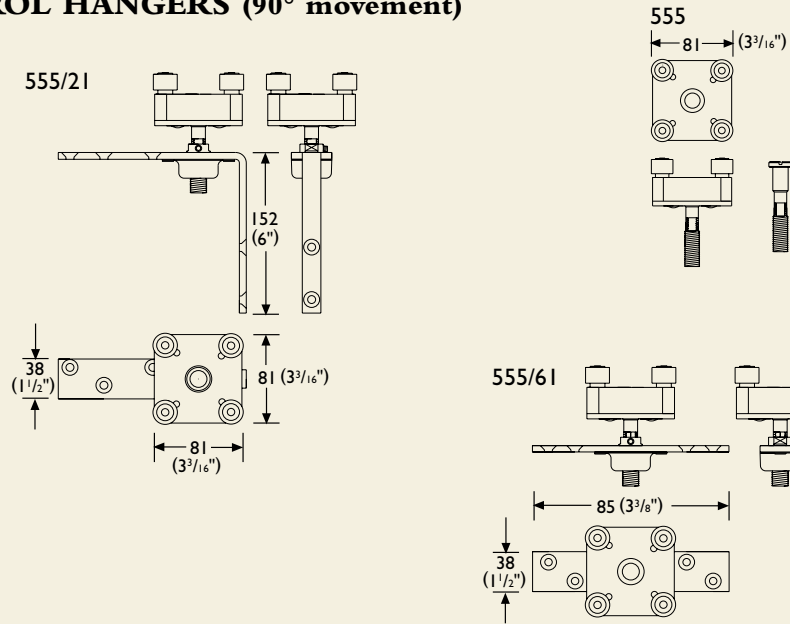


## FLEXIROL HANGERS (135° movement)

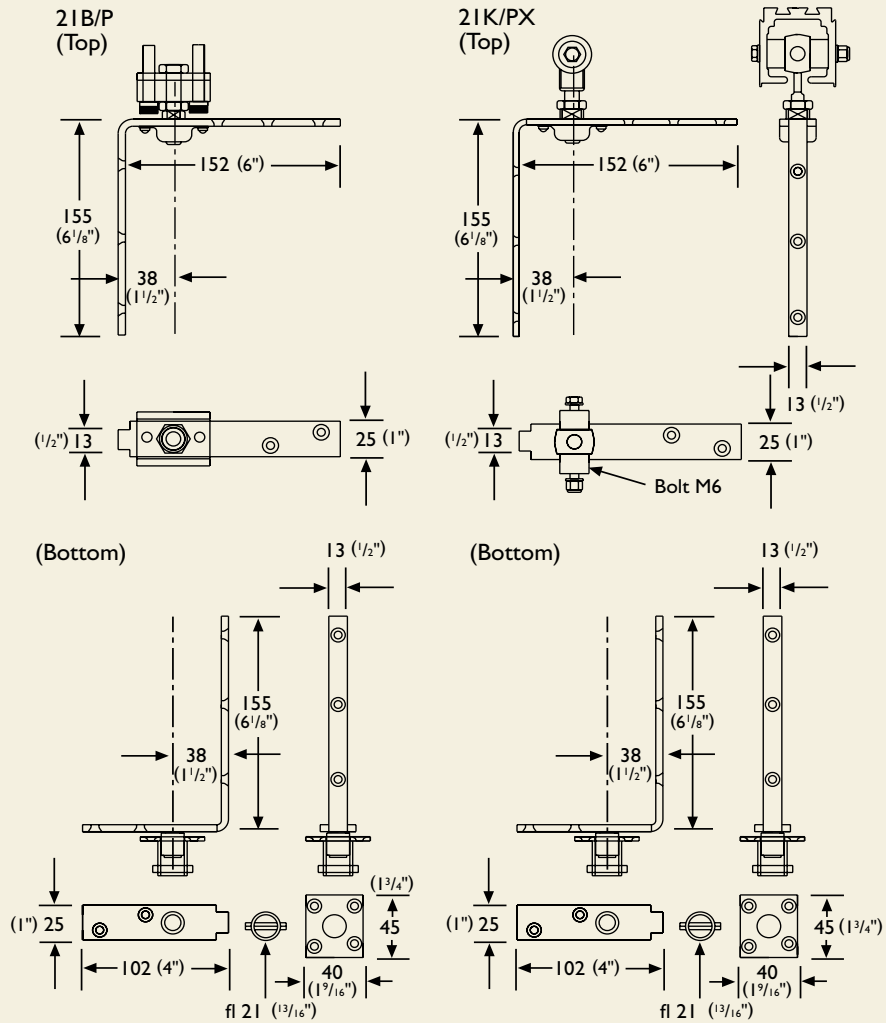


# HANGERS

## FLEXIROL HANGERS (90° movement)

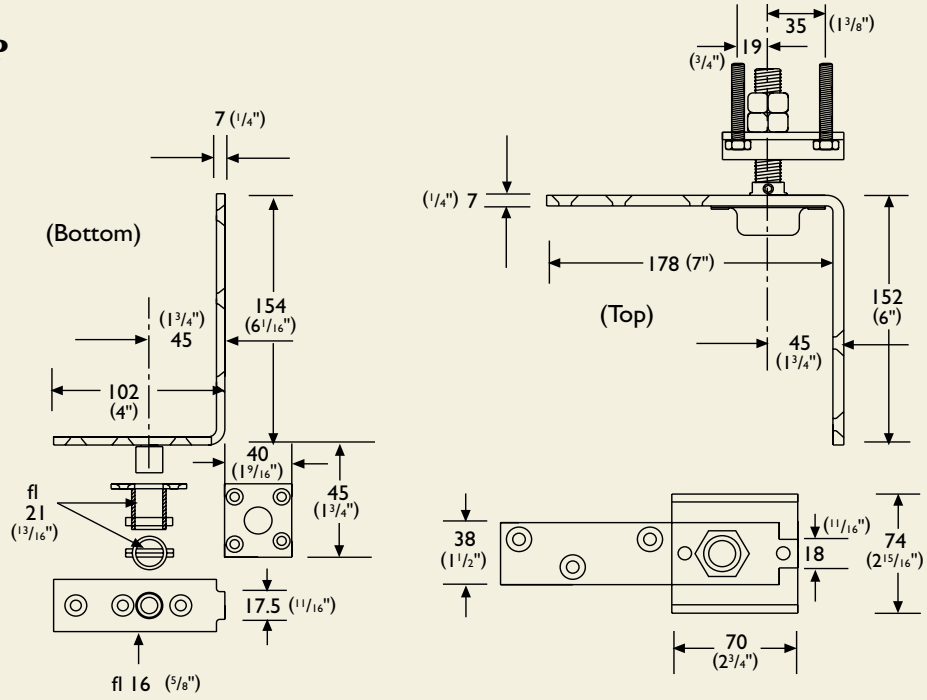


# PIVOT SETS

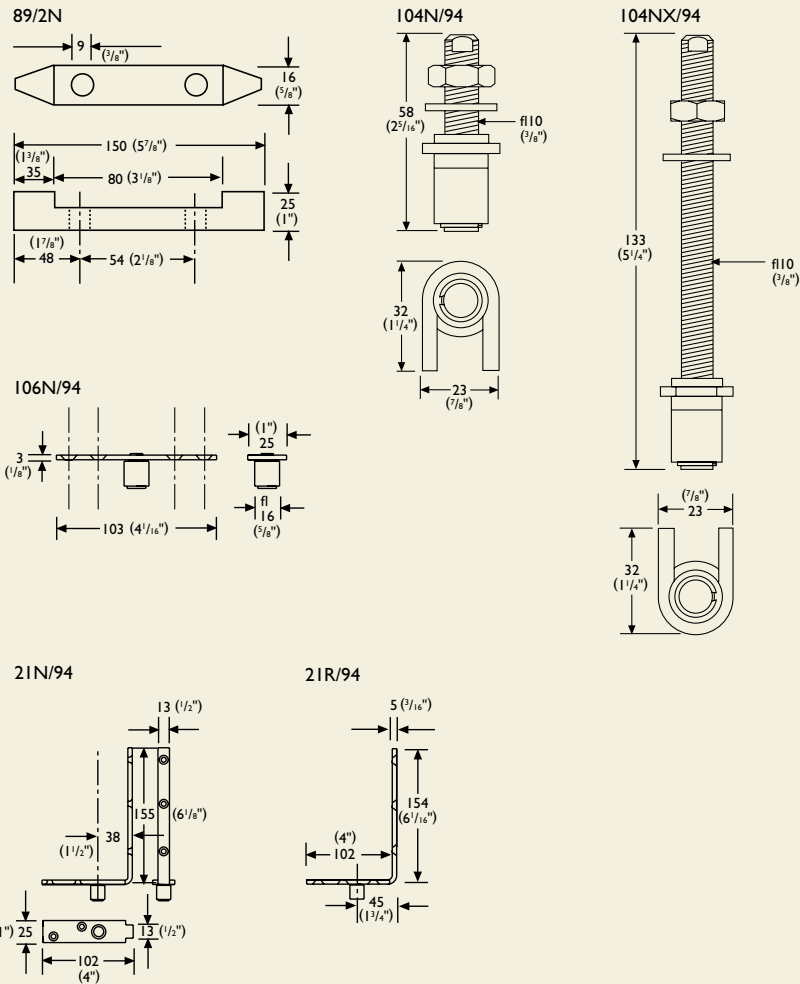


# PIVOT SETS

## 21/550P



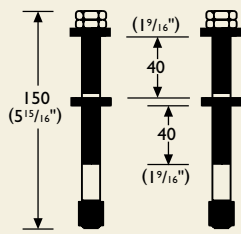
# GUIDES



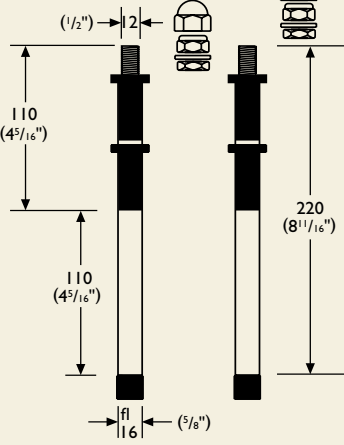


# GUIDES

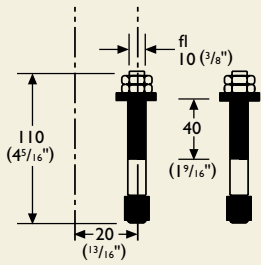
**67BA/150**



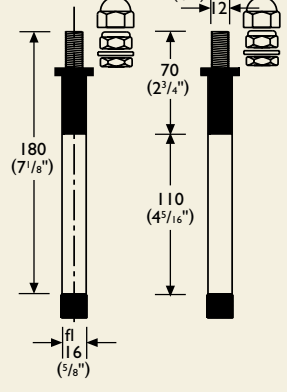
**67BA/220**



**68BA/110**



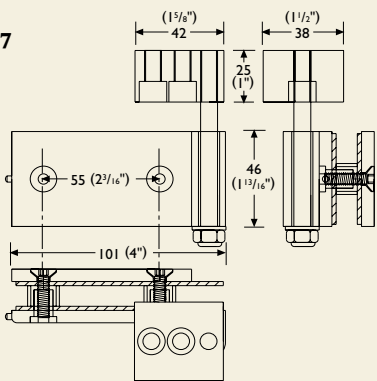
**68BA/180**



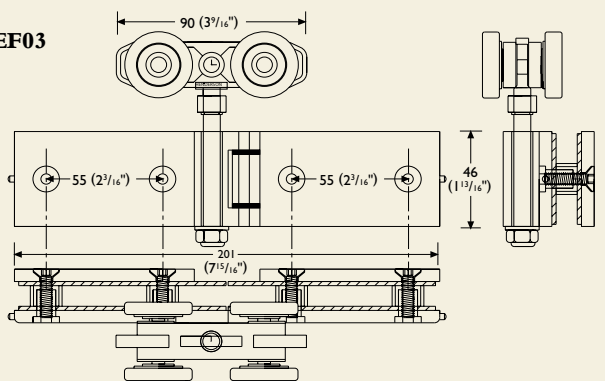
# GLASS FITTINGS

## PACER ENDFOLD

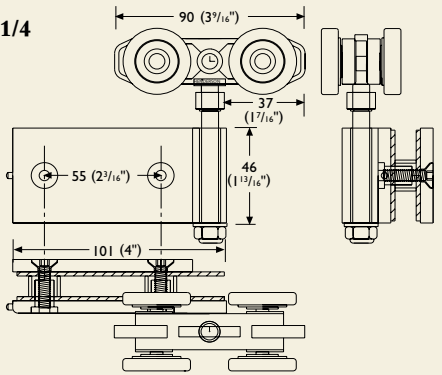
**EF07**



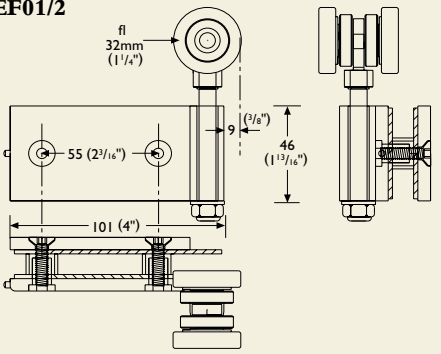
**EF03**



**EF01/4**

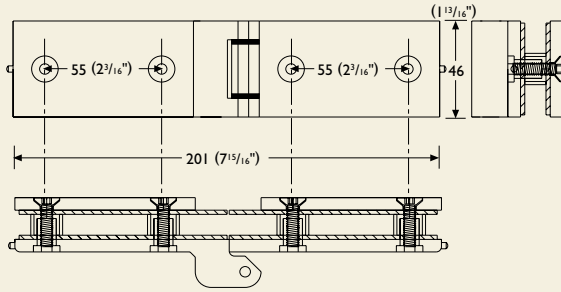


**EF01/2**

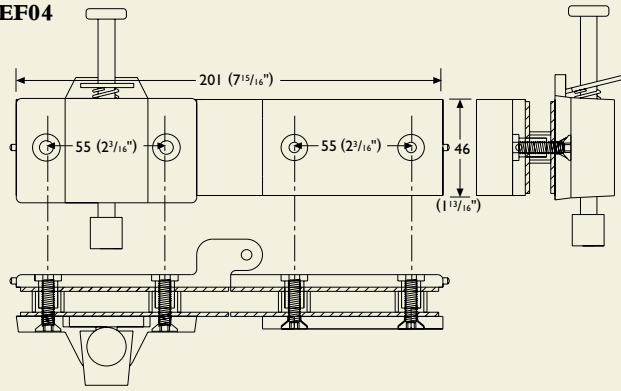


# GLASS FITTINGS

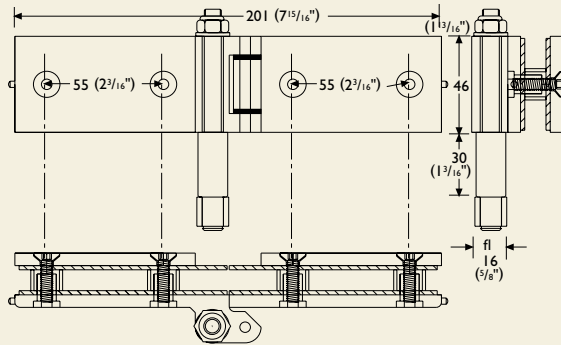
**EF05**



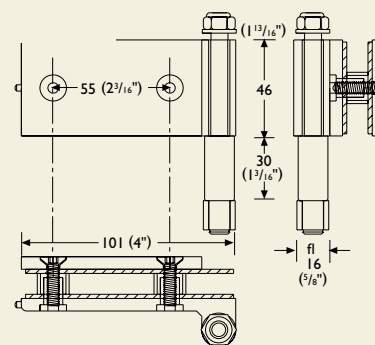
**EF04**



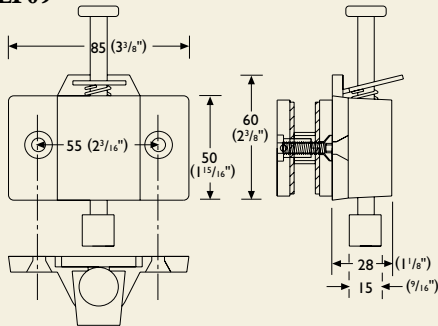
**EF06**



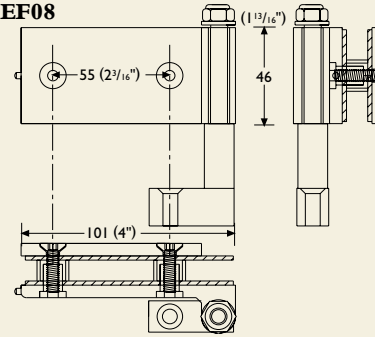
**EF02**



**Loose Bolt  
EF09**



**EF08**

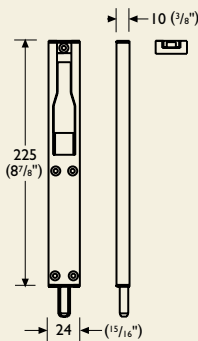


† Standard hinge finishes: White (RAL 9010), Polished Anodized, Silver Anodized and Black Anodized.

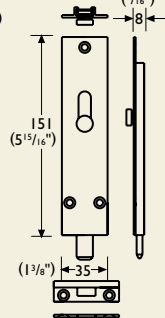
For glass cutting dimensions contact Henderson.

# ACCESSORIES AND STOPS

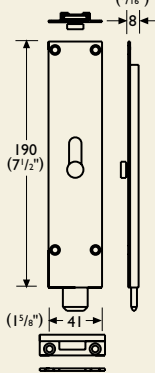
**F3715**



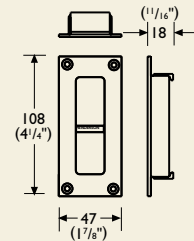
**333**



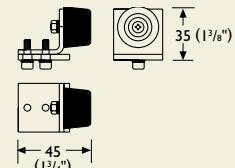
**454**



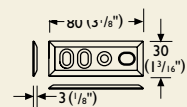
**400**



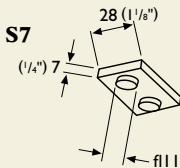
**Pacer  
HH3/290**



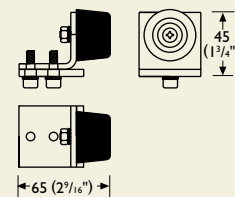
**F3734**



**S7**



**Flexirol  
HH3/301**



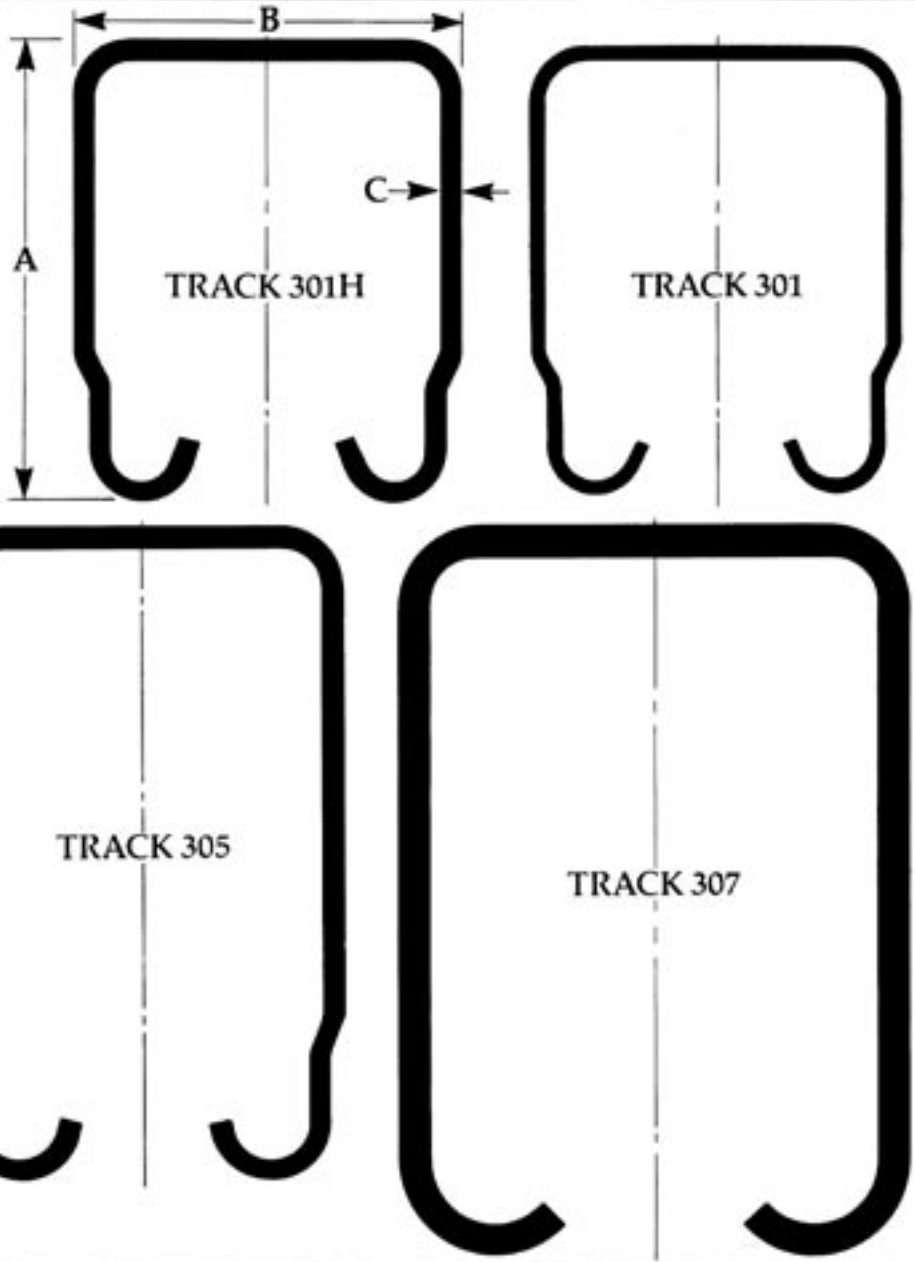
# TRACK & CHANNEL

All tracks are in galvanized finish. Once installed they should be kept greased, to reduce wear and increase life. Any length of track is obtained by butting 2 pieces of track together and fixing a bracket at the joint, and closed brackets at each end.

Available lengths:

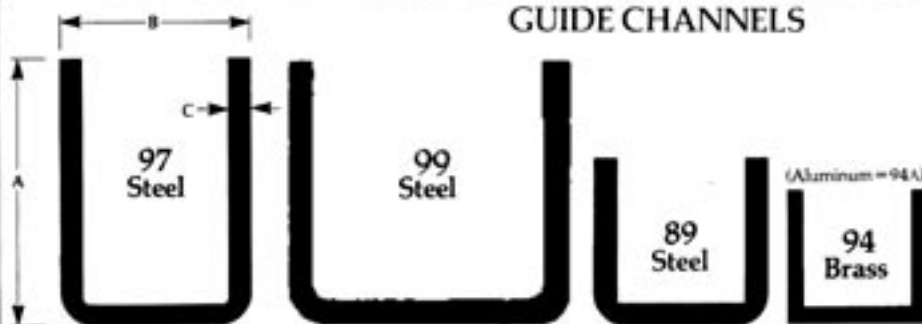
(ft)	280	290	301	301H	305	307
6	•	•	•	•	•	•
8	•	•	•	•	•	•
10	•	•	•	•	•	•
12	•	•				
20		•				

(ins)	280	290	301	301H	305	307
A	1 <sup>1</sup> / <sub>16</sub>	1 <sup>3</sup> / <sub>4</sub>	2 <sup>5</sup> / <sub>8</sub>	2 <sup>5</sup> / <sub>8</sub>	3 <sup>11</sup> / <sub>16</sub>	4 <sup>3</sup> / <sub>32</sub>
B	1 <sup>3</sup> / <sub>16</sub>	1 <sup>7</sup> / <sub>16</sub>	2 <sup>5</sup> / <sub>32</sub>	2 <sup>5</sup> / <sub>32</sub>	2 <sup>1</sup> / <sub>4</sub>	2 <sup>7</sup> / <sub>8</sub>
C	18G	14G	14G	12G	12G	6G



FULL SIZE SECTIONS

## GUIDE CHANNELS



Available lengths 89, 94A, 97, 99:  
1.5/2/2.5/3 meter  
Available lengths 94:  
1.5 meter & 3 meter

(ins)	89	94	97	99
A	1	3/4	1 1/2	1 1/2
B	1	9/16	1 1/16	1 9/16
C	12G	17G	12G	12G

All dimensions in feet and inches.

# TRACK BRACKETS

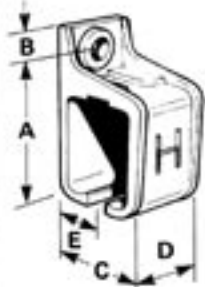
All brackets are aluminum alloy die castings except where otherwise indicated.

\* Pressed steel brackets in painted finish.

• Pressed steel brackets – galvanized.

Fit closed brackets at track ends, or fit end-clips 1A/301 EC (for alloy brackets) or 1/301 EC (for steel brackets) in the case of all 301 track brackets. Joining brackets are only required at track curve ends. Maximum bracket spacing is every 3 ft.

## BRACKETS – SIDEWALL



No. 1 or 1A

Fig no.	A	B	C	D	E	Bolt
• 281	1 <sup>3</sup> / <sub>8</sub>	1/4	1 <sup>1</sup> / <sub>8</sub>	1 <sup>3</sup> / <sub>8</sub>	9 <sup>1</sup> / <sub>16</sub>	8G screw
• 1A/290	2 <sup>5</sup> / <sub>8</sub>	1/2	2	1 <sup>1</sup> / <sub>4</sub>	1 <sup>1</sup> / <sub>16</sub>	3/16
• 1/290/S	3	1/2	2 <sup>5</sup> / <sub>8</sub>	2 <sup>1</sup> / <sub>4</sub>	1 <sup>5</sup> / <sub>16</sub>	3/16
• 1A/301	3 <sup>3</sup> / <sub>16</sub>	3/4	2 <sup>7</sup> / <sub>8</sub>	2 <sup>1</sup> / <sub>4</sub>	1 <sup>3</sup> / <sub>8</sub>	1/2
• 1/301/S	3 <sup>5</sup> / <sub>16</sub>	3/8	2 <sup>7</sup> / <sub>8</sub>	2 <sup>1</sup> / <sub>4</sub>	1 <sup>5</sup> / <sub>8</sub>	1/2
• 1A/305	5 <sup>1</sup> / <sub>2</sub>	1	3 <sup>3</sup> / <sub>8</sub>	3	1 <sup>1</sup> / <sub>2</sub>	3/8
* 1/307/S	6 <sup>1</sup> / <sub>4</sub>	1	3 <sup>3</sup> / <sub>8</sub>	3	1 <sup>5</sup> / <sub>8</sub>	3/8



End Clip 1/301 EC (for steel brackets)



End Clip 1A/301 EC (for alloy brackets)



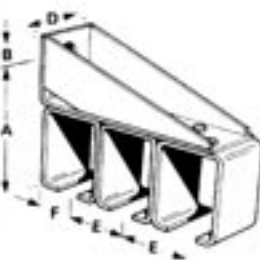
No. 9 or 9A

Fig no.	A	B	C	D	E	Bolt
• 9A/290	1 <sup>11</sup> / <sub>16</sub>	5/8	2 <sup>3</sup> / <sub>4</sub>	5/8	2	14G screw
* 9/301/S	2 <sup>9</sup> / <sub>16</sub>	5/32	4 <sup>5</sup> / <sub>16</sub>	1 <sup>1</sup> / <sub>2</sub>	3 <sup>1</sup> / <sub>2</sub>	18G screw
* 9A/305	3 <sup>3</sup> / <sub>16</sub>	1 <sup>1</sup> / <sub>2</sub>	6 <sup>5</sup> / <sub>16</sub>	2 <sup>3</sup> / <sub>8</sub>	5 <sup>1</sup> / <sub>8</sub>	1/2
* 9/307/S	3 <sup>3</sup> / <sub>16</sub>	2	7 <sup>1</sup> / <sub>4</sub>	2 <sup>2</sup> / <sub>32</sub>	5 <sup>1</sup> / <sub>2</sub>	3/8



No. 5

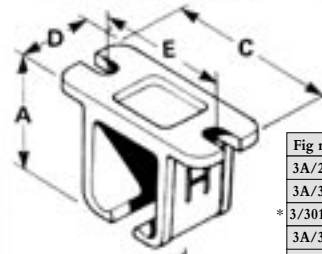
Fig no.	A	B	D	E	F	Bolt
• 5/290	3 <sup>3</sup> / <sub>8</sub>	3/16	1 <sup>1</sup> / <sub>2</sub>	2 <sup>1</sup> / <sub>8</sub>	1 <sup>1</sup> / <sub>16</sub>	1/2
• 5/301	4 <sup>3</sup> / <sub>8</sub>	1 <sup>5</sup> / <sub>16</sub>	2 <sup>1</sup> / <sub>4</sub>	3 <sup>3</sup> / <sub>8</sub>	1 <sup>9</sup> / <sub>16</sub>	3/8
• 5/305	6 <sup>1</sup> / <sub>8</sub>	1 <sup>1</sup> / <sub>2</sub>	3	3 <sup>3</sup> / <sub>8</sub>	1 <sup>7</sup> / <sub>8</sub>	3/4
* 5/307/S	7 <sup>1</sup> / <sub>2</sub>	1	4	3 <sup>3</sup> / <sub>8</sub>	1 <sup>25</sup> / <sub>32</sub>	3/4



No. 7

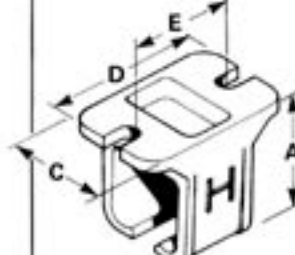
Fig no.	A	B	D	E	F	Bolt
* 7/301/S	4 <sup>9</sup> / <sub>16</sub>	1 <sup>1</sup> / <sub>2</sub>	2 <sup>3</sup> / <sub>8</sub>	2 <sup>3</sup> / <sub>8</sub>	1 <sup>1</sup> / <sub>16</sub>	3/8

## BRACKETS – OVERHEAD



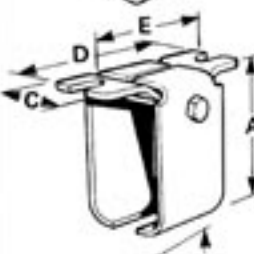
No. 3 or 3A

Fig no.	A	B	C	D	E	Bolt
• 3A/290	2 <sup>7</sup> / <sub>32</sub>	-	3 <sup>1</sup> / <sub>4</sub>	1 <sup>1</sup> / <sub>4</sub>	2 <sup>1</sup> / <sub>2</sub>	5/16
• 3A/301	3 <sup>3</sup> / <sub>8</sub>	-	5 <sup>1</sup> / <sub>8</sub>	2 <sup>1</sup> / <sub>4</sub>	3 <sup>5</sup> / <sub>16</sub>	1/2
* 3/301/S	3 <sup>5</sup> / <sub>32</sub>	-	5 <sup>1</sup> / <sub>8</sub>	2 <sup>1</sup> / <sub>4</sub>	3 <sup>3</sup> / <sub>16</sub>	1/2
* 3A/305	4 <sup>1</sup> / <sub>2</sub>	-	6 <sup>5</sup> / <sub>8</sub>	3	4 <sup>5</sup> / <sub>16</sub>	5/8
* 3/307/S	6 <sup>7</sup> / <sub>32</sub>	-	7 <sup>1</sup> / <sub>4</sub>	3 <sup>1</sup> / <sub>2</sub>	5 <sup>1</sup> / <sub>2</sub>	5/8



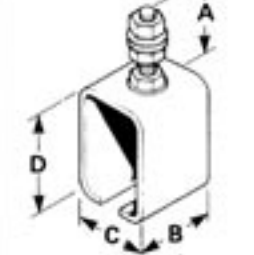
No. 4 or 4A

Fig no.	A	B	C	D	E	Bolt
• 4A/290	2 <sup>5</sup> / <sub>8</sub>	-	1 <sup>7</sup> / <sub>8</sub>	3	2 <sup>3</sup> / <sub>8</sub>	5/16
• 4A/301	3 <sup>3</sup> / <sub>4</sub>	-	3	4 <sup>5</sup> / <sub>8</sub>	3 <sup>3</sup> / <sub>4</sub>	1/2
• 4A/305	5 <sup>3</sup> / <sub>8</sub>	-	3 <sup>1</sup> / <sub>2</sub>	7 <sup>1</sup> / <sub>2</sub>	5 <sup>1</sup> / <sub>8</sub>	5/8
* 4/307/S	6 <sup>1</sup> / <sub>4</sub>	-	3 <sup>3</sup> / <sub>8</sub>	7 <sup>1</sup> / <sub>2</sub>	5 <sup>1</sup> / <sub>2</sub>	5/8



No. 4/301S

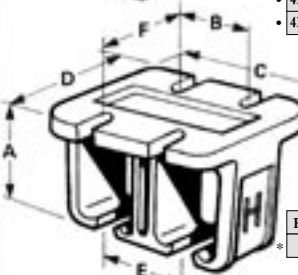
Fig no.	A	B	C	D	E	Bolt
* 4/301S	3 <sup>1</sup> / <sub>16</sub>	-	1 <sup>3</sup> / <sub>4</sub>	4 <sup>5</sup> / <sub>8</sub>	3 <sup>3</sup> / <sub>4</sub>	1/2



No. 4R

Fig no.	A	B	C	D	Bolt
• 4R/280S	1 <sup>5</sup> / <sub>16</sub>	2	1 <sup>3</sup> / <sub>8</sub>	1 <sup>3</sup> / <sub>8</sub>	3/8
• 4R/290/S	1 <sup>1</sup> / <sub>16</sub>	1 <sup>3</sup> / <sub>16</sub>	1 <sup>3</sup> / <sub>8</sub>	2 <sup>1</sup> / <sub>16</sub>	3/8
• 4R/301/S	2 <sup>1</sup> / <sub>16</sub>	2 <sup>1</sup> / <sub>4</sub>	2 <sup>1</sup> / <sub>8</sub>	3 <sup>1</sup> / <sub>16</sub>	1/2
• 4R/305/S	2 <sup>1</sup> / <sub>16</sub>	3	2 <sup>1</sup> / <sub>16</sub>	4 <sup>1</sup> / <sub>32</sub>	5/8
• 4R/307/S	2 <sup>1</sup> / <sub>16</sub>	3	3 <sup>3</sup> / <sub>16</sub>	4 <sup>9</sup> / <sub>32</sub>	3/4

\*R Bracket body without bolt (suffix SR) is also available for welding track to steel structure eg 4R/301 SR.



No. 6

Fig no.	A	B&E	C	D	F	Bolt
* 6/301	3 <sup>3</sup> / <sub>4</sub>	3 <sup>1</sup> / <sub>8</sub>	6	5	3 <sup>5</sup> / <sub>8</sub>	3/8



No. 8

Fig no.	A	B	C	D	E	F	Bolt
* 8/301/S	3 <sup>3</sup> / <sub>8</sub>	5	7	4 <sup>3</sup> / <sub>8</sub>	2 <sup>3</sup> / <sub>8</sub>	3 <sup>3</sup> / <sub>8</sub>	1/2



# HANGERS

/N = Nylon wheels /S = Steel wheels  
 Nylon wheels are quieter and avoid the need to grease track to reduce wear. Hence their carrying capacity is greater. For automatic doors halve the carrying capacity and use nylon wheels if possible.

## No. 56 METAL DOORS



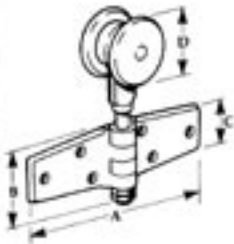
Track no.	Hanger no.	Dimensions					Door Weight Capacity
		A	B	C	D	H	
290	56K/N	3 <sup>7</sup> / <sub>16</sub>	1 <sup>1</sup> / <sub>4</sub>	1 <sup>1</sup> / <sub>8</sub>	1 <sup>7</sup> / <sub>16</sub>	3 <sup>1</sup> / <sub>32</sub>	300 lbs.
	56K/S						300 lbs.
	56K/S/200						400 lbs.
301	56A/S	5 <sup>5</sup> / <sub>8</sub>	2 <sup>3</sup> / <sub>4</sub>	1 <sup>1</sup> / <sub>16</sub>	2 <sup>7</sup> / <sub>32</sub>	5 <sup>5</sup> / <sub>8</sub>	600 lbs.
301H	56A/S	5 <sup>5</sup> / <sub>8</sub>	2 <sup>3</sup> / <sub>4</sub>	1 <sup>1</sup> / <sub>16</sub>	2 <sup>7</sup> / <sub>32</sub>	5 <sup>5</sup> / <sub>8</sub>	800 lbs.
301H	56A/S	5 <sup>5</sup> / <sub>8</sub>	2 <sup>3</sup> / <sub>4</sub>	1 <sup>1</sup> / <sub>16</sub>	2 <sup>7</sup> / <sub>32</sub>	5 <sup>5</sup> / <sub>8</sub>	1000 lbs.
305	56C/S	6 <sup>3</sup> / <sub>8</sub>	2 <sup>3</sup> / <sub>4</sub>	1 <sup>1</sup> / <sub>16</sub>	3	5 <sup>5</sup> / <sub>8</sub>	1500 lbs.
307	56F/S	8 <sup>7</sup> / <sub>16</sub>	3 <sup>3</sup> / <sub>8</sub>	2 <sup>1</sup> / <sub>4</sub>	3 <sup>7</sup> / <sub>16</sub>	3 <sup>1</sup> / <sub>16</sub>	2500 lbs.
307	56FJ/S	8 <sup>7</sup> / <sub>16</sub>	3 <sup>3</sup> / <sub>8</sub>	2 <sup>1</sup> / <sub>4</sub>	3 <sup>7</sup> / <sub>16</sub>	3 <sup>1</sup> / <sub>16</sub>	4400 lbs.

## No. 53 WOOD DOORS



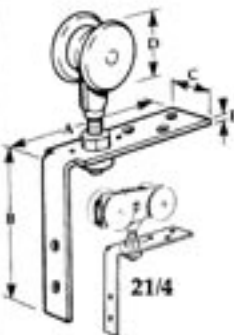
Track no.	Hanger no.	Dimensions					Door Weight Capacity
		A	B	C	D	E	
290	53K/N	3 <sup>7</sup> / <sub>16</sub>	3 <sup>3</sup> / <sub>4</sub>	2 <sup>1</sup> / <sub>4</sub>	1 <sup>7</sup> / <sub>16</sub>	1 <sup>1</sup> / <sub>2</sub> -1 <sup>1</sup> / <sub>4</sub>	300 lbs.
	53K/S						300 lbs.
	53K/S/200						400 lbs.
301	53A/S	5 <sup>5</sup> / <sub>8</sub>	7	3	2 <sup>7</sup> / <sub>32</sub>	1 <sup>1</sup> / <sub>2</sub> -2 <sup>1</sup> / <sub>4</sub>	600 lbs.
301H	53A/S	5 <sup>5</sup> / <sub>8</sub>	7	3	2 <sup>7</sup> / <sub>32</sub>	1 <sup>1</sup> / <sub>2</sub> -2 <sup>1</sup> / <sub>4</sub>	800 lbs.
301H	53A/S	5 <sup>5</sup> / <sub>8</sub>	7	3	2 <sup>7</sup> / <sub>32</sub>	1 <sup>1</sup> / <sub>2</sub> -2 <sup>1</sup> / <sub>4</sub>	1000 lbs.
305	53C/S	6 <sup>3</sup> / <sub>8</sub>	7	3	3	1 <sup>1</sup> / <sub>2</sub> -2 <sup>1</sup> / <sub>4</sub>	1500 lbs.
307	53FJ/S	8 <sup>7</sup> / <sub>16</sub>	5	2 <sup>1</sup> / <sub>2</sub>	3 <sup>7</sup> / <sub>16</sub>	2 <sup>3</sup> / <sub>4</sub>	4400 lbs.

## No. 62 FOLDING DOORS



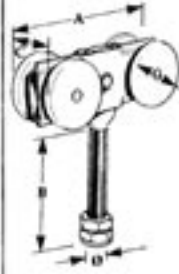
Track no.	Hanger no.	Dimensions			
		A	B	C	D
290	62K	7 <sup>1</sup> / <sub>16</sub>	2 <sup>1</sup> / <sub>4</sub>	1 <sup>1</sup> / <sub>16</sub>	1 <sup>1</sup> / <sub>16</sub>
301	62A	7 <sup>1</sup> / <sub>16</sub>	2 <sup>1</sup> / <sub>4</sub>	1 <sup>1</sup> / <sub>16</sub>	2 <sup>7</sup> / <sub>32</sub>
301H	62A	7 <sup>1</sup> / <sub>16</sub>	2 <sup>1</sup> / <sub>4</sub>	1 <sup>1</sup> / <sub>16</sub>	2 <sup>7</sup> / <sub>32</sub>
305	62C	21 <sup>1</sup> / <sub>2</sub>	3 <sup>3</sup> / <sub>4</sub>	2	3

## No. 21 FOLDING DOORS



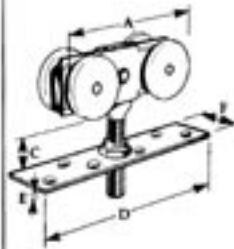
Track no.	Hanger no.	Dimensions				
		A	B	C	D	E
290	21K/S	6	6	1	1 <sup>7</sup> / <sub>16</sub>	3 <sup>1</sup> / <sub>16</sub>
21K/N						
21K/4N						
301	21A/S	7	6	1 <sup>1</sup> / <sub>2</sub>	2 <sup>7</sup> / <sub>32</sub>	1 <sup>1</sup> / <sub>4</sub>
301H	21A/4S	7	6	1 <sup>1</sup> / <sub>2</sub>	2 <sup>7</sup> / <sub>32</sub>	1 <sup>1</sup> / <sub>4</sub>
305	21C/S	7	6	1 <sup>1</sup> / <sub>2</sub>	3	1 <sup>1</sup> / <sub>4</sub>

## No. 56X METAL DOORS



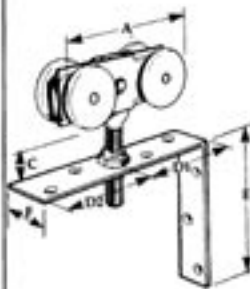
Track no.	Hanger no.	Dimensions					Door Weight Capacity
		A	B	C	D	H	
290	56KX/S	3 <sup>7</sup> / <sub>16</sub>	4 <sup>3</sup> / <sub>8</sub>	1 <sup>1</sup> / <sub>8</sub>	1 <sup>7</sup> / <sub>16</sub>	3 <sup>1</sup> / <sub>32</sub>	300 lbs.
	56KX/N						400 lbs.
301	56AX/S	5 <sup>5</sup> / <sub>8</sub>	5 <sup>1</sup> / <sub>16</sub>	1 <sup>1</sup> / <sub>16</sub>	2 <sup>7</sup> / <sub>32</sub>	5 <sup>5</sup> / <sub>8</sub>	600 lbs.
301H	56AX/S	5 <sup>5</sup> / <sub>8</sub>	5 <sup>1</sup> / <sub>16</sub>	1 <sup>1</sup> / <sub>16</sub>	2 <sup>7</sup> / <sub>32</sub>	5 <sup>5</sup> / <sub>8</sub>	800 lbs.
301H	56AX/N	5 <sup>5</sup> / <sub>8</sub>	5 <sup>1</sup> / <sub>16</sub>	1 <sup>1</sup> / <sub>16</sub>	2 <sup>7</sup> / <sub>32</sub>	5 <sup>5</sup> / <sub>8</sub>	1000 lbs.
305	56CX/S	6 <sup>3</sup> / <sub>8</sub>	5 <sup>1</sup> / <sub>16</sub>	1 <sup>1</sup> / <sub>16</sub>	3	5 <sup>5</sup> / <sub>8</sub>	1500 lbs.
307	56FX/S	8 <sup>7</sup> / <sub>16</sub>	5 <sup>1</sup> / <sub>2</sub>	2 <sup>1</sup> / <sub>4</sub>	3 <sup>7</sup> / <sub>16</sub>	3 <sup>1</sup> / <sub>16</sub>	2500 lbs.
307	56FJX/S	8 <sup>7</sup> / <sub>16</sub>	5 <sup>1</sup> / <sub>2</sub>	2 <sup>1</sup> / <sub>4</sub>	3 <sup>7</sup> / <sub>16</sub>	3 <sup>1</sup> / <sub>16</sub>	4400 lbs.

## No. 57 WOOD DOORS



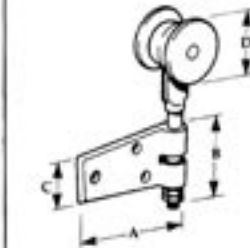
Track no.	Hanger no.	Dimensions					Door Weight Capacity
		A	C	D	E	F	
290	57K/N	3 <sup>7</sup> / <sub>16</sub>	1	5 <sup>1</sup> / <sub>2</sub>	1 <sup>1</sup> / <sub>16</sub>	1	300 lbs.
301	57A/S	5 <sup>5</sup> / <sub>8</sub>	2 <sup>3</sup> / <sub>4</sub>	7 <sup>5</sup> / <sub>16</sub>	1 <sup>1</sup> / <sub>16</sub>	1 <sup>1</sup> / <sub>2</sub>	600 lbs.
301H	57A/N	5 <sup>5</sup> / <sub>8</sub>	2 <sup>3</sup> / <sub>4</sub>	7 <sup>5</sup> / <sub>16</sub>	1 <sup>1</sup> / <sub>16</sub>	1 <sup>1</sup> / <sub>2</sub>	1000 lbs.
305	57C/S	6 <sup>3</sup> / <sub>8</sub>	2 <sup>1</sup> / <sub>2</sub>	7 <sup>5</sup> / <sub>16</sub>	1 <sup>1</sup> / <sub>16</sub>	1 <sup>1</sup> / <sub>2</sub>	1500 lbs.

## No. 52 WOOD DOORS



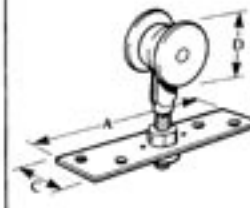
Track no.	Hanger no.	Dimensions						Door Weight Capacity
		A	C	D1	D2	E	F	
290	52K/S	3 <sup>7</sup> / <sub>16</sub>	1	3	2	5 <sup>1</sup> / <sub>4</sub>	1	300 lbs.
	52K/N							300 lbs.
301	52A/S	5 <sup>5</sup> / <sub>8</sub>	2 <sup>3</sup> / <sub>4</sub>	4	5	6 <sup>1</sup> / <sub>2</sub>	1 <sup>1</sup> / <sub>2</sub>	600 lbs.
301H	52A/N	5 <sup>5</sup> / <sub>8</sub>	2 <sup>3</sup> / <sub>4</sub>	4	5	6 <sup>1</sup> / <sub>2</sub>	1 <sup>1</sup> / <sub>2</sub>	1000 lbs.
305	52C/S	6 <sup>3</sup> / <sub>8</sub>	2 <sup>1</sup> / <sub>2</sub>	4		6 <sup>1</sup> / <sub>2</sub>	1 <sup>1</sup> / <sub>2</sub>	1500 lbs.

## No. 63 FOLDING DOORS



Track no.	Hanger no.	Dimensions			
		A	B	C	D
290	63K	4	2 <sup>1</sup> / <sub>4</sub>	1 <sup>1</sup> / <sub>16</sub>	1 <sup>7</sup> / <sub>16</sub>
301	63A	4	2 <sup>1</sup> / <sub>4</sub>	1 <sup>1</sup> / <sub>16</sub>	2 <sup>7</sup> / <sub>32</sub>
301H	63A	4	2 <sup>1</sup> / <sub>4</sub>	1 <sup>1</sup> / <sub>16</sub>	2 <sup>7</sup> / <sub>32</sub>
305	63C	8 <sup>7</sup> / <sub>16</sub>	3 <sup>3</sup> / <sub>4</sub>	2	3

## No. 61 FOLDING DOORS



Track no.	Hanger no.	Dimensions			
		A	B	C	D
290	61K/S	5 <sup>1</sup> / <sub>2</sub>	3 <sup>1</sup> / <sub>16</sub>	1	1 <sup>7</sup> / <sub>16</sub>
301	61A/S	7 <sup>1</sup> / <sub>4</sub>	1 <sup>1</sup> / <sub>4</sub>	1 <sup>1</sup> / <sub>2</sub>	2 <sup>7</sup> / <sub>32</sub>
301H	61A/S	7 <sup>1</sup> / <sub>4</sub>	1 <sup>1</sup> / <sub>4</sub>	1 <sup>1</sup> / <sub>2</sub>	2 <sup>7</sup> / <sub>32</sub>
305	61C/S	7 <sup>1</sup> / <sub>4</sub>	1 <sup>1</sup> / <sub>4</sub>	1 <sup>1</sup> / <sub>2</sub>	3



# GUIDES OTHERS

**No. 315 Single Wall Mounted Stay Roller (Bi-parting doors)** - Provides clear threshold - fit No. 128 shoe guide with center stop. Nylon Rollers, galv. steel angle.

**No. 310 Double Wall Mounted Stay Roller (Double line)** - Provides clear threshold - Nylon Rollers, galv. steel angle.

**No. 126HD/A Ground Stay Rollers** - Provides clear threshold - Nylon Rollers, covered by shields to prevent traffic damage. Galv. steel.

**No. 128 Shoe Guide with Center Stop** Grey painted iron, adjustable. Center stop plate provided, for bi-parting doors.

**No. 299 Curtailed Rail with Inverted No. 89 Channel to underside of doors.** - Provides clear threshold - fit No. 128 shoe guide with center stop on bi-parting doors.

**No. 126 Ground Stay Rollers** - Provides clear threshold - fit No. 128 shoe guide with center stop on bi-parting doors. Galv. steel.

Most roller guides are fitted with brass rollers. The assemblies are rustproofed by electrozinc galvanizing. Fit two guides per door. Always specify channel type when ordering guides (eg 104P/97).

**No. 102½ Side Guide Roller (Patented)** Heavy duty plough guide, ideal for most applications. Malleable body with self-adjusting roller spindles. Use with channel No. 97.

**No. 105R Roller Guide** - General purpose guide suitable for most applications. Is economical yet very strong. Use with channel Nos. 89, 94, or 97.

**No. 106R Under Guide Roller** - Steel plate with a brass roller. Ideal for small, light doors especially internal application. Not recommended for dirty conditions. Use with channel Nos. 89, 94, or 97.

**No. 113R Side Guide Roller** - Steel plate with a brass roller. Not recommended for heavy doors or dirty conditions. Use with channel Nos. 89 or 94.

**No. 104P Under Guide Roller (Patented)** - Brass roller used for metal doors. Easily removable without dismantling doors. Use with channel Nos. 89 or 97.

**No. 104PX Long Under Guide Roller** - Same as 104P but with extra long bolt.

**No. 67 Intermediate Guide - folding doors** No. 67/89 for track 290 and channel 89. No. 67/97 for track 301 or 301H and channel 97. No. 67C/97 for track 305 and channel 97.

**No. 68 End Guide - folding doors** No. 68/89 for track 290 and channel 89. No. 68/97 for track 301 or 301H and channel 97. No. 68C/97 for track 305 and channel 97.

**No. 21R End Fold Guide - folding doors** No. 21KR/94 for track 290 and channel 94. No. 21R/94 for track 301, 301H and 305.

**No. 106R Center Fold Guide - folding doors** No. 106R/94 for all tracks.

**No. 994 Cane Bolt** - No. 994 15" electro galvanized steel shoot with socket for concrete, when required.

**No. 994X Offset Cane Bolt** - No. 994X 15" electro galvanized steel shoot with socket for concrete.

**No. 994R Roller Guide Cane Bolt** - No. 994R electro galvanized steel shoot with brass roller. Use with channel Nos. 89 or 97.

**No. 994S Locking Cane Bolt** - No. 994S 15" electro galvanized steel shoot with socket for concrete. Use with padlock (Not by PCH).

**No. 77 Flush Bolt** - No. 77J suitable for framed doors with bottom rails up to 6" x 1½". Gray painted steel. No. 77S suitable for framed doors with bottom rails up to 9" x 2¼". Gray painted steel.

**No. 78 Flush Bolt** - Designed for fitting to stile of flush doors minimum 5" x 1¼". Gray painted steel.

**No. 333 Semi-Flush Bolt** - 6" x 1½" aluminum alloy in satin anodized finish.

**No. 454 Semi-Flush Bolt** - 7½" x 1½" aluminum alloy in satin anodized finish.

**No. 863 Bow Handle** - Gray painted iron. 5¼" x 1¼"

**No. 463 Bow Handle** - Gray painted iron. 6¼" x 1½"

**No. 464 Bow Handle** - Gray painted iron. 10¼" x 2¼"

**No. 400 Flush Pull** - Aluminum alloy in satin anodized finish. 4¼" x 1½" with ¾" mortise.

**No. 414 Flush Pull** - Aluminum self finish. 5¼" x 2½" with ¾" mortise.

**No. 413 Flush Pull** - Heavy duty Gray painted iron. 6" x 3¼" with 1" mortise.

**No. 115 Corner Protection Plates** - Rustproofed by electrozinc plating - Fit a pair on the leading door edge.

**No. 109 Single Wall or Ground Stop** - Gray painted steel with rubber buffer. For light doors. Fit on wall, ¾ up door height.

**No. 107E Buffer Stop** - Rubber. For fitting to slamming post when other stops cannot be used.

**No. 107 Single Wall Stop** - Gray painted steel with rubber buffers. For medium weight doors, fit one on wall, ¾ up door height. For heavier door fit 2.

**No. 431 Swivel Locking Bar** - Rustproofed by zinc plating. For doors sliding on outside face of wall or for securing to end post. Use with padlock (Not by PCH).

**No. 430 Detachable Locking Bar** - Rustproofed by zinc plating. For Straight-Run doors sliding inside and locked outside. Use with padlock (Not by PCH).

**No. 65 Back Flap Hinges** - No. 65 for track 290, 301 or 301H. Aluminum. No. 65C track 305. Gray painted iron.

**No. 403 Butt Hinge** - No. 403/1 3½" x 2" aluminum alloy. No. 403/2 4" x 2½" aluminum alloy. No. 403/3 4" x 3" aluminum alloy.

Also available in steel to similar sizes and referred to as No. 37, No. 41, No. 42 respectively.

DISTRIBUTED IN  
NORTH AMERICA BY



**PEMKO**

**VENTURA, CALIFORNIA**

P.O. BOX 3780 VENTURA, CA 93006  
TELEPHONE: 800.283.9988 FAX: 800.283.4050

**WHITTIER, CALIFORNIA**

12251 EAST COAST DRIVE., WHITTIER, CA 90601  
TELEPHONE: 800.283.9988 FAX: 800.283.4050

**MEMPHIS, TENNESSEE**

P.O. BOX 18966 MEMPHIS, TN 38181-0966  
TELEPHONE: 800.824.3018 FAX: 800.243.3656

**E-MAIL**

[PEMSALES@PEMKO.COM](mailto:PEMSALES@PEMKO.COM)

**WEB**

[WWW.PEMKO.COM](http://WWW.PEMKO.COM)

**HENDERSON**



INVESTOR IN PEOPLE