

DISTRIBUTED IN  
NORTH AMERICA BY



PEMKO



# HENDERSON

COMMERCIAL AND INDUSTRIAL  
SLIDING AND FOLDING DOOR HARDWARE



# Contents

## Industrial and Stainless Steel Track and Hardware Pg 53

Straight Sliding Industrial	→ 290-307 wood Door Hardware	Pg 54
Straight Sliding Industrial	→ 290-307 metal Door Hardware	Pg 56
Straight Sliding Commercial (Bottom Roller)	→ Mansion and Majestic Wood Door Hardware	Pg 62
Straight Sliding Industrial (Bottom Roller)	→ Sherwood 225-800 Wood Door Hardware	Pg 66
Straight Sliding Industrial (Bottom Roller)	→ Sherwood 225-800 Metal Door Hardware	Pg 70
Folding Industrial	→ Tangent 290-305 Folding Door Hardware	Pg 74
Round-the-Corner Industrial	→ Tangent 290-305 Round-The-Corner Door Hardware	Pg 78
Folding Partitions	→ Council 290-305 End Folding Door Hardware	Pg 82
Folding Partitions	→ Council 290-305 Center Folding Door Hardware	Pg 86
Folding Section Doors (Bottom Roller)	→ Arcade A70 End Folding and Center Folding Door Hardware	Pg 90
Overhead Runways	→ 280-305	Pg 94
Sliding Cantilever Gate Hardware	→ Titan	Pg 98

## Introduction to PC Henderson Pg 2

## Commercial Straight Sliding Systems Pg 3

Husky	→ 100 and 200 lbs.	Pg 4
Husky	→ Glass Panels up to 165 lbs.	Pg 6
Pacer	→ Wood and Metal Doors up to 440 lbs.	Pg 7
Pacer	→ Glass up to 285 lbs.	Pg 9
Flexirol	→ Wood, Metal, or Glass	Pg 12

## Commercial Folding Systems Pg 14

Husky	→ 55 and 100 lbs.	Pg 16
Pacer Centerfold	→ Wood Doors up to 165 lbs.	Pg 18
Pacer Endfold	→ Wood Doors up to 165 lbs.	Pg 20
Pacer Endfold	→ Glass Doors up to 99 lbs.	Pg 22
Pacer Endfold Exterior		Pg 24
Pacer Endfold Aluminum		Pg 26
Flexirol Centerfold		Pg 28
Flexirol Endfold Interior		Pg 30
Flexirol Endfold Exterior		Pg 32
Flexirol Endfold Aluminum		Pg 34
Flexirol Folding Glass		Pg 36

## Commercial Multidirectional Systems Pg 38

Pacer 135°	→ Wood and Aluminum Doors up to 264 lbs.	Pg 40
Pacer 135°	→ Glass Doors up to 264 lbs.	Pg 42
Flexirol 90°	→ Wood and Aluminum Doors up to 220 lbs.	Pg 44
Flexirol 90°	→ Glass Doors up to 220 lbs.	Pg 46
Flexirol 135°	→ Wood and Aluminum Doors up to 1100 lbs.	Pg 48
Flexirol 135°	→ Glass Doors up to 1100 lbs.	Pg 50

## Stainless Steel Straight Sliding Industrial Pg 100

Track, Guide Channel, Guides	→ 280/SS, 290/SS, 301/SS	Pg 101
Brackets	→ 1/SS, 1X/SS, 3/SS, 3X/SS	Pg 102
Hangers	→ 284/SS, 285/SS, 53/SS, 56/SS, 57/SS	Pg 104
Top-Hung (Wood or Metal Straight Sliding)	→ 280/SS	Pg 105
Top-Hung (Wood or Metal Straight Sliding)	→ 290/SS	Pg 106
Top-Hung (Wood or Metal Straight Sliding)	→ 301/SS	Pg 108

## Component Illustrations Pg 110

Components	→ Hinges, Brackets, Hangers, Pivot Sets, Guides, and Fittings	Pg 110
Track & Channel	→ 280-307 Track, 89-99 Channel	Pg 118
Track Brackets	→ Pacer, Flexirol, Husky	Pg 119
Hangers		Pg 120
Guides and Other Accessories		Pg 121
P C Henderson Advertising		Pg 122

## Product Index Pg 124

# HENDERSON

P C Henderson has long been acknowledged as the world leader in the design and manufacture of Sliding Gear Systems for residential, commercial and industrial applications.

Established in 1921, the company is a member of Cardo Door, the largest Business Area within Cardo AB, a major European engineering products group with an annual turnover in excess of £700 million.

P C Henderson is based in Bowburn in North East England and has subsidiaries in Holland and Ireland. The company has a long established sales and distribution network in over 70 countries, with head office support from Henderson's fully trained technical sales team.

The company is committed to quality and is registered to BS EN ISO 9002: 1994 Quality Systems.

## HENDERSON COMMERCIAL RANGE

The three models in the Henderson commercial range - Husky Glass, Pacer and Flexirol - are suitable for doors weighing up to 1100 lbs. (500kg). They are ideal for applications such as shop-fronts, hotels, conference centers and offices, where smooth action, high performance and aesthetics are important.

You can choose from wood, aluminum and glass door options, with straight sliding, folding and multidirectional stacking systems. Flexirol multidirectional systems can accommodate 90° and 135° movement. Pacer systems allow 135° movement.

Aluminum track can be painted on site to match interior colors and ceilings. Pacer track has the option of clip-on aluminum fascia.







# STAINLESS STEEL

## SLIDING DOOR HARDWARE

STAINLESS  
STEEL FOLDING  
HARDWARE ALSO  
AVAILABLE. SEE  
PAGE 82.

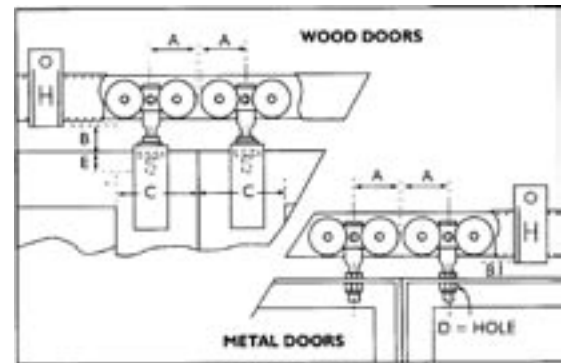


# HENDERSON

Since 1921 Henderson has been developing Sliding Gear Systems to enable almost any object to slide. Throughout the world, Henderson gear is used for a wide variety of applications.

For areas exposed to extreme levels of corrosive elements or where a high level of hygiene is essential, Henderson has developed a stainless steel range. Manufactured from high quality stainless steel and incorporating the latest polymers, this gear offers a high level of performance and corrosion resistance.

The Henderson Stainless Steel range can be used for an array of applications including chemical factories, oil rigs, abattoirs, cold storage, food processing plants and areas exposed to salt water. Whatever the conditions, Henderson Stainless Steel Gear will perform.



A = Distance from the center of the hanger to wheel

B = Vertical adjustment distance

C = Minimum door stile width

D = Diameter of holes (Steel doors)

E = Hole depth for pendant bolt

Wood Doors	Stainless Track	280	290	301
	Hangers	284N	53	53
A		1-3/16"	1-11/16"	2-11/16"
B	Min.	9/16"	7/8"	1-1/4"
	Max.	15/16"	1-1/8"	2-3/4"
C		-	4-1/2"	4-1/2"
E		13/16"	7/8"	2-3/8"

Metal Doors	Stainless Track	280	290	301
	Hangers	285N	56	56
A		1-3/16"	1-11/16"	2-11/16"
B	Min.	1/4"	3/8"	13/16"
	Max.	15/16"	1"	2-1/2"
D		5/16"	7/16"	11/16"

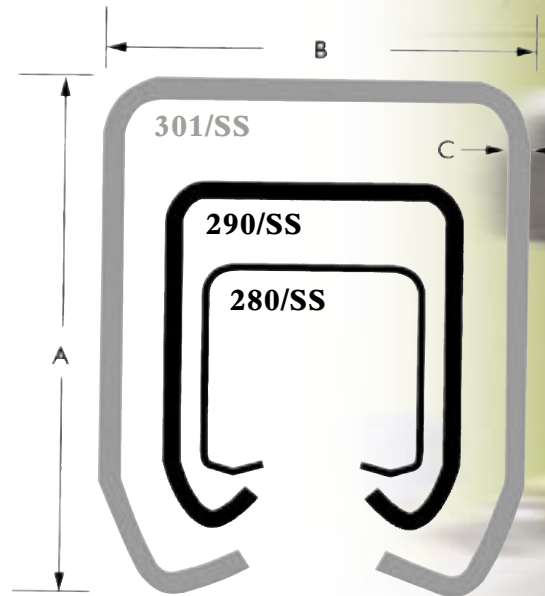
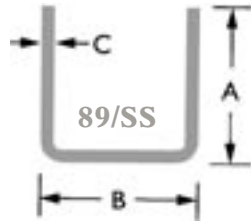
# 280/SS, 290/SS, 301/SS

## TRACK, GUIDE, CHANNEL, GUIDES

Track	Dimensions			Capacities for straight sliding doors		
	C	A	B	Max. Door weight	Max. Door height	Door thickness
280/SS	1/16	1-1/8	1-1/4	200lbs.	96	3/4 to 2"
290/SS	1/8	1-3/4	1-1/2	300lbs.	120	1-3/8 to 2"
301/SS	3/16	2-5/8	2-1/4	600lbs.	144	1-3/4 to 2-1/4"

Material: All track and channel in grade 316L (A4) stainless steel  
 Supply lengths: 2000mm (6'6") and 3000mm (9'10")

Channel	Dimensions		
	C	A	B
89/SS	1/8"	3/4"	3/4"

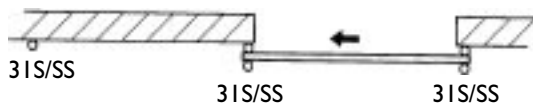
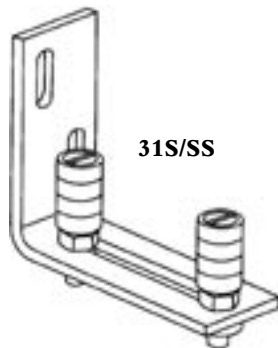


Guides and channels are essential for stability, safety and functioning of the system.

### Guide 31S/SS

Grade 316(A4) stainless steel angle with horizontal adjustable nylon guiding wheels on grade 304(A2) stainless steel bolts.

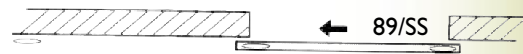
Guide 31S/SS gives unhindered access and is suitable for applications where dirt might enter the guide channel and hinder sliding.



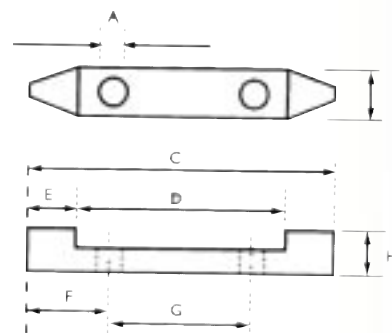
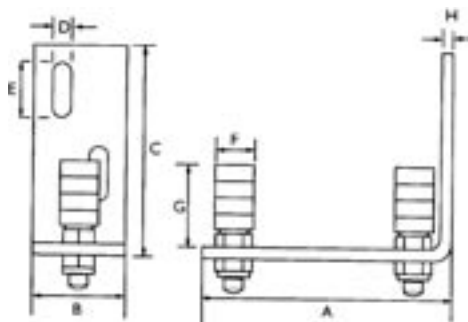
### Torpedo Guide 89/2N/SS screw-in type

Nylon guide with stainless steel fixings.

Torpedo guide in combination with 89/SS guide channel rebated in door or fixed to underside of door.



Guide	Dimensions							
	A	B	C	D	E	F	G	H
31S/SS	5-3/8"	2"	4-1/2"	3/8"	1"	7/8"	2-3/8"	1/8"
89/2N/SS	3/8"	5/8"	5-7/8"	3-1/8"	1-3/8"	1-7/8"	2-1/8"	1"



# STAINLESS STEEL BRACKETS

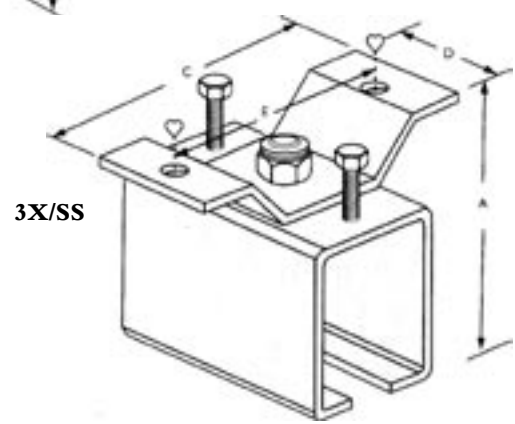
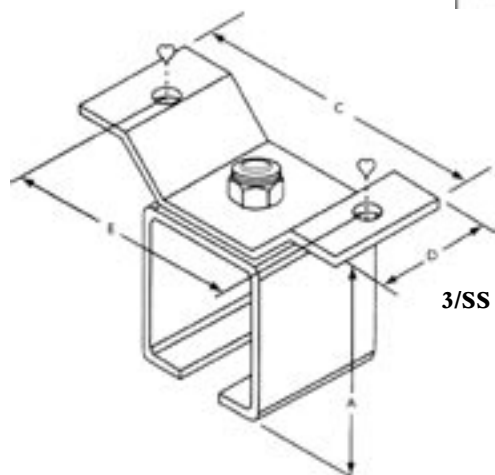
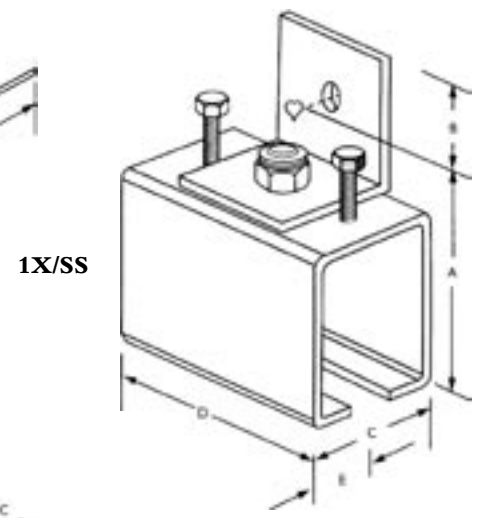
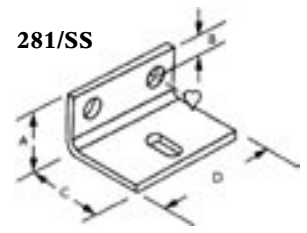
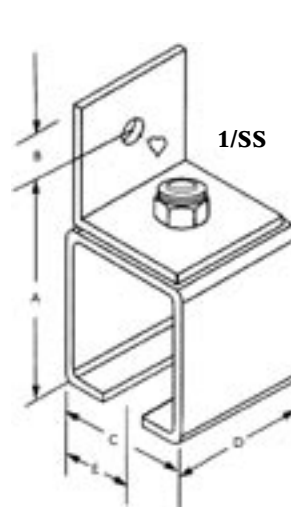
## SOFFIT/FACE FIXED

I/SS	Dimensions					
	A	B	C	D	E	Bolt
281/SS	3/4"	1/4"	1-1/8"	1-5/8"	-	M5
1/290/SS	3-3/8"	3/4"	2"	1-5/8"	1"	M8
1/301/SS	4-3/8"	1-1/8"	2-5/8"	2-5/8"	1-1/4"	M10

IX/SS	Dimensions					
	A	B	C	D	E	Bolt
1X/290/SS	3-3/8"	3/4"	2"	3-7/8"	1"	M8
1X/301/SS	4-3/8"	1-1/8"	2-5/8"	4-1/2"	1-1/4"	M10

3/SS	Dimensions					
	A	B	C	D	E	Bolt
3/290/SS	2-7/8"	-	3-1/2"	1-5/8"	2-1/2"	M8
3/301/SS	3-7/8"	-	5-3/8"	2-3/8"	4-1/8"	M10

3X/SS	Dimensions					
	A	B	C	D	E	Bolt
3X/290/SS	2-7/8"	-	3-1/2"	1-5/8"	2-1/2"	M8
3X/301/SS	3-7/8"	-	5-3/8"	2-3/8"	4-1/8"	M10



### Brackets and center-to-center distance

The center-to-center distance of the brackets can vary depending on track length. Recommended spacing is 24" and in case of maximum load 20".

Joining brackets are required at each track joint; the letter "X" denotes the joining bracket.

It is recommended, should stainless steel brackets or track be fitted directly to a material which is not of stainless steel, that a packing be placed between the two surfaces to avoid possible contact corrosion.

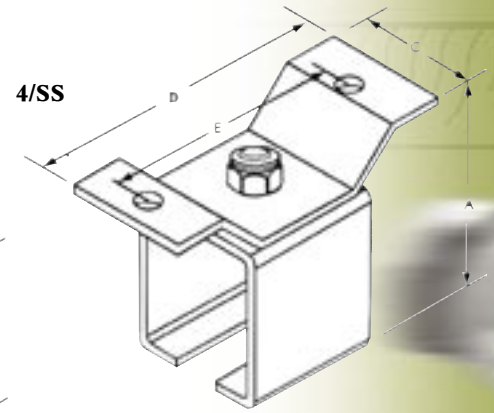
All brackets are made in grade 316(A4) stainless steel, all nuts and bolts in grade 304(A2) stainless steel.

For fixing of all stainless steel sliding door hardware stainless steel fixings must be used!

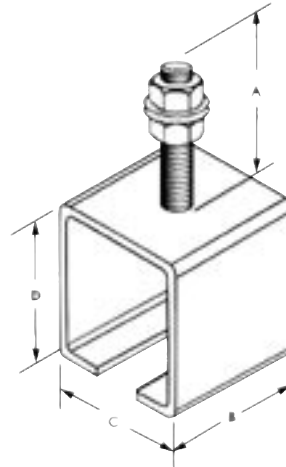
# STAINLESS STEEL BRACKETS

## SOFFIT FIXED

4/SS		Dimensions				
	A	B	C	D	E	Bolt
4/290/SS	2-7/8"	-	1-5/8"	3-1/2"	2-1/2"	M8
4/301/SS	3-7/8"	-	2-3/8"	5-3/8"	4-1/8"	M10

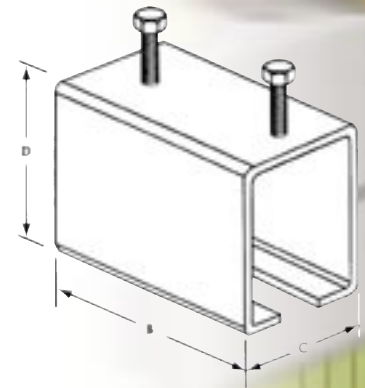


4R/SS		Dimensions				
	A	B	C	D	Bolt	
4R/280/SS	2"	2"	1-1/2"	1-1/2"	M8	
4R/290/SS	2"	1-5/8"	2"	2-1/4"	M10	
4R/301/SS	2-1/2"	2-5/8"	2-5/8"	3-1/8"	M12	



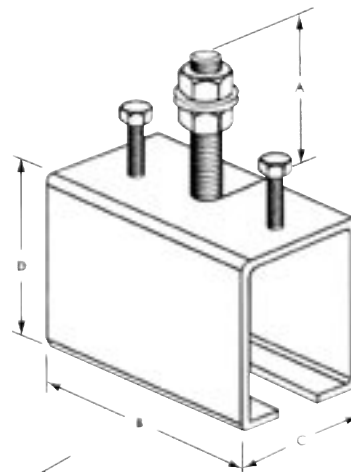
4R/SS

4X/SS		Dimensions				
	A	B	C	D	Bolt	
4X/290/SS	-	3-7/8"	2"	2-1/4"	M10	
4X/301/SS	-	4-1/2"	2-5/8"	3-1/8"	M12	



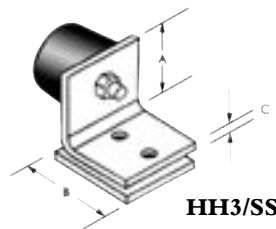
4X/SS

4RX/SS		Dimensions				
	A	B	C	D	Bolt	
4RX/280/SS	2"	2"	1-1/2"	1-1/2"	M8	
4RX/290/SS	2"	3-7/8"	2"	2-1/4"	M10	
4RX/301/SS	2-1/2"	4-1/2"	2-5/8"	3-1/8"	M12	



4RX/SS

HH3/SS		Dimensions		
	A	B	C	
HH3/290/SS	1-1/4"	1-1/4"	4"	
HH3/301/SS	1-5/8"	1-5/8"	5"	

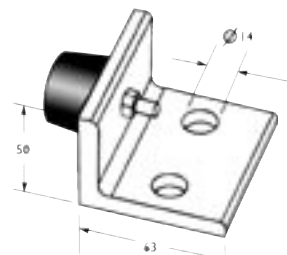


HH3/SS

### HH3/SS Stops

Stops HH3/290/SS and HH3/301/SS for fitting in 290 and 301 track. Complete with rubber stop and grade 304(A2) stainless steel hexagonal screws.

109/SS		Dimensions		
	A	B	C	
109/SS	2-1/2"	2"	1/2"	



109/SS

### 109/SS Doorstop

Doorstops can be fitted at ground height or on the wall of an opening. (2/3 of the door height from the ground).

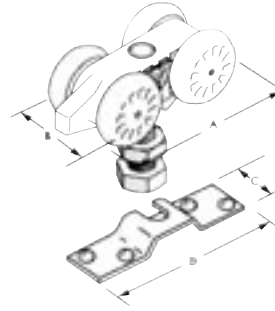


# STAINLESS STEEL HANGERS

Track Type	Hanger	Dimensions					Max. Door Capacity
		A	B	C	D	ℓ	
280	284N/SS	2"	1-1/8"	7/8"	3-1/8"	8	100 lbs.
280	285N/SS	2"	1-1/8"	-	-	8	100 lbs.
280	284/SS	2-1/2"	-	7/8"	3-1/8"	8	200 lbs.
280	285/SS	2-1/2"	1-1/8"	-	-	8	200 lbs.

Hanger body and wheels of high-performance nylon. All metal components in grade 304(A2) stainless steel.

N.B. Maximum door capacity means the maximum weight of each door carried by two hangers.



284N/SS for wood doors - 100 lbs.  
 284/SS for wood doors - 200 lbs.  
 285N/SS for metal doors - 100 lbs.  
 285/SS for metal doors - 200 lbs.

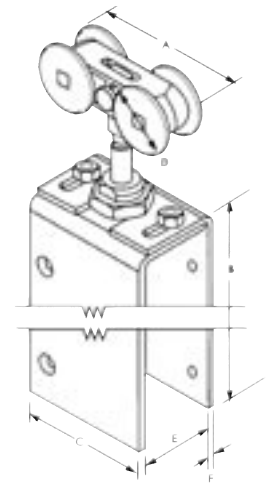
Track Type	Hanger	Dimensions						Max. Door Capacity
		A	B	C	D	E	F	
290	53/290/SS	3-3/8"	7-1/8"	3"	1-1/2"	1-3/4"-2-1/4"	1/8"	300 lbs.
301	53/301/SS	5-3/8"	7-1/8"	3"	1-7/8"	1-3/4"-2-1/4"	1/8"	600 lbs.

53/290/SS Hanger body of high-performance nylon. All other components in grade 304(A2) stainless steel.

53/301/SS Complete in grade 304(A2) stainless steel.

N.B. Maximum door capacity means the maximum weight of each door carried by two hangers.

53/SS for wood doors

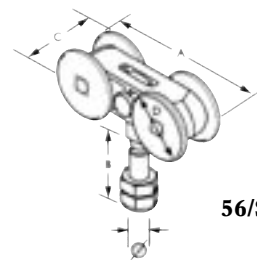


Track Type	Hanger	Dimensions					Max. Door Capacity
		A	B	C	D	ℓ	
290	56/290/SS	3-3/8"	1-5/8"	1-1/8"	1-1/2"	M10	300 lbs.
301	56/301/SS	5-3/8"	3-1/8"	1-3/4"	2"	M16	600 lbs.

56/290/SS Hanger body of high-performance nylon. All other components in grade 304(A2) stainless steel.

56/301/SS Complete in grade 304(A2) stainless steel.

N.B. Maximum door capacity means the maximum weight of each door carried by two hangers.



56/SS for metal doors

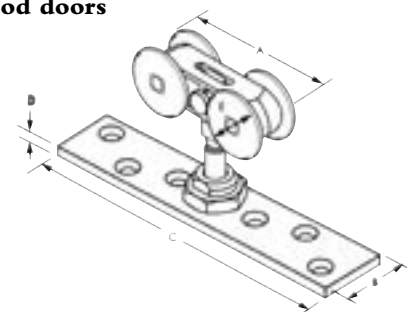
Track Type	Hanger	Dimensions					Max. Door Capacity
		A	B	C	D	E	
290	57/290/SS	3-3/8"	1-1/2"	7-3/8"	1/8"	1-1/2"	300 lbs.
301	57/301/SS	5-3/8"	1-1/2"	7-3/8"	1/8"	2"	600 lbs.

57/290/SS Hanger body of high-performance nylon. All other components in grade 304(A2) stainless steel.

57/301/SS Complete in grade 304(A2) stainless steel.

N.B. Maximum door capacity means the maximum weight of each door carried by two hangers.

57/SS for wood doors



# 280/SS

## STAINLESS STEEL HARDWARE FOR TOP-HUNG WOOD OR METAL STRAIGHT SLIDING DOORS

### CAPACITY

Max. door weight: 100 LBS. OR 200 LBS.

Max. door height: 96"

Door thickness: 3/4" to 2"

### APPLICATIONS

For sliding doors or gates in abattoirs, oil rigs, boats, chemical plants.

### TECHNICAL INFORMATION

**280/SS Track:** Grade 316L(A4) stainless steel provided with 1/4" punched holes for direct soffit fixing.

**Hangers:** 284N/SS and 285N/SS nylon body, nylon wheels, axles, fixing plate, bolt and nuts in grade 304(A2) stainless steel. Max. 100 lbs. per two hangers.

**Hangers:** 284N/SS and 285N/SS nylon body, nylon wheels, axles, fixing plate, bolt and nuts in grade 304(A2) stainless steel. Max. 200 lbs. per two hangers.

**Guide:** 102N nylon guide

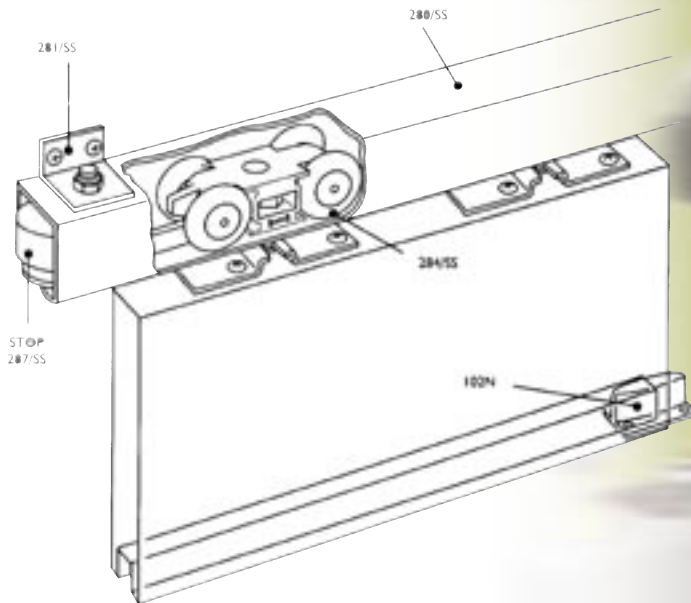
**Guide:** 89/2N/SS nylon guide used in conjunction with stainless steel channel 89/SS.

**Guide Channel:** 89/SS Grade 316L(A4) stainless steel.

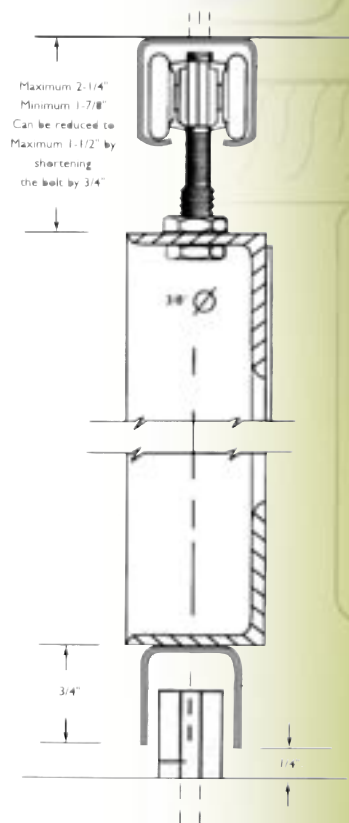
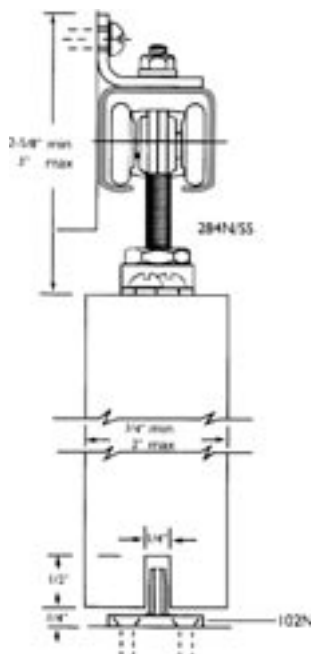
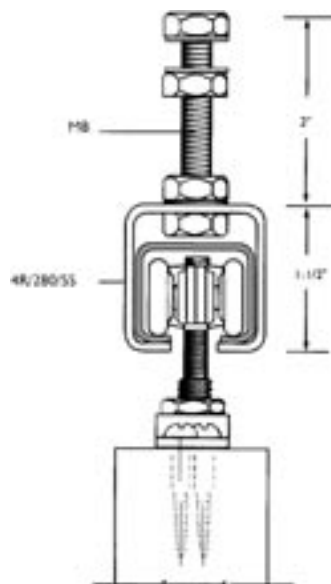
**Face bracket:** 281/SS face fixed in grade 316L(A4) stainless steel.

**Face bracket:** 4R/280/SS soffit fixed in grade 316L(A4) stainless steel.

**Stop:** 287/SS rubber stop with stainless steel plate and bolt.



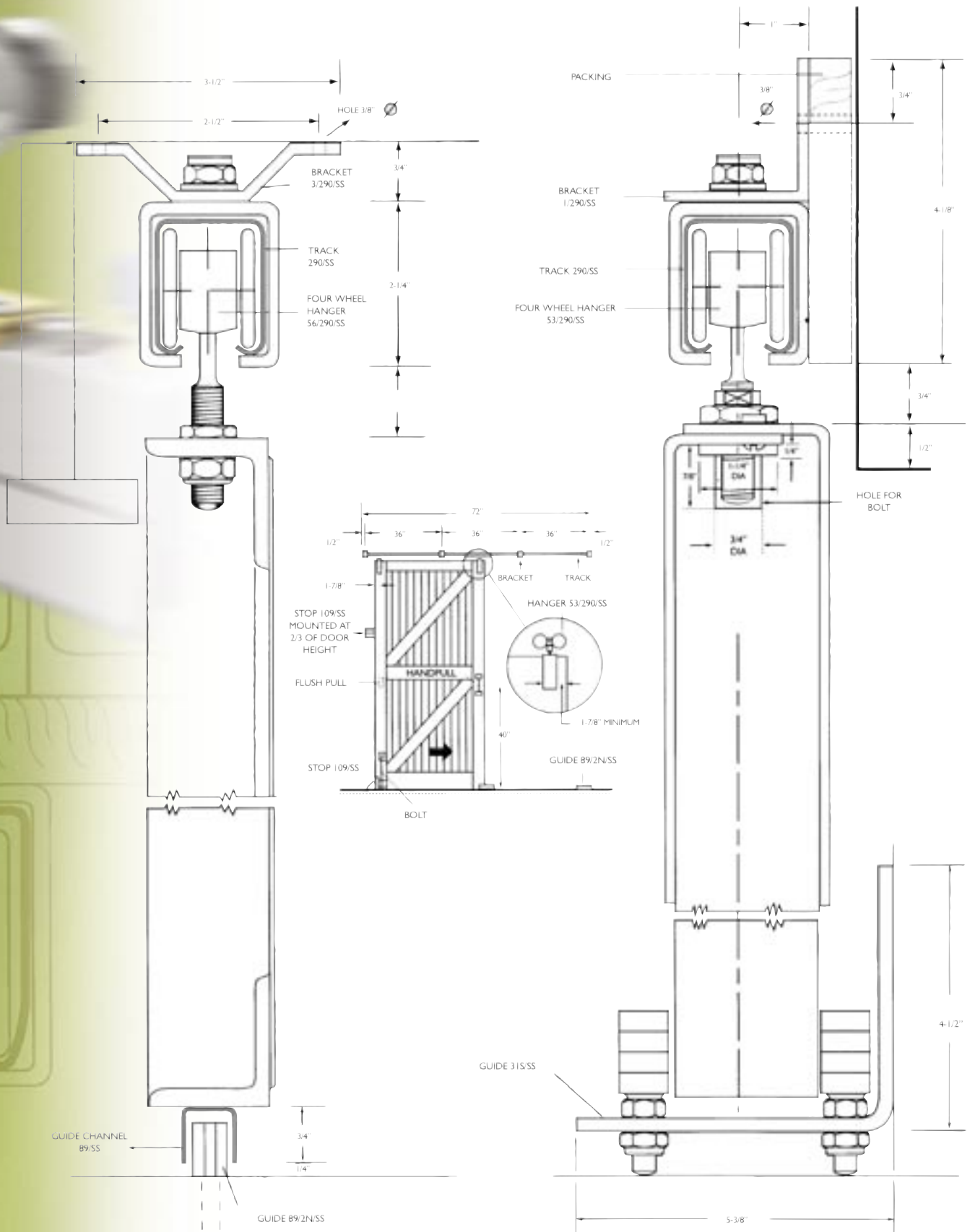
\*Track, brackets and hangers in stainless steel cannot be used with the standard Henderson non-stainless 280 range.





# 290/SS

## STAINLESS STEEL HARDWARE FOR STRAIGHT SLIDING DOORS



# 290/SS

## STAINLESS STEEL HARDWARE FOR TOP-HUNG WOOD OR METAL STRAIGHT SLIDING DOORS

### CAPACITY

Max. door weight: 300 LBS.  
Max. door height: 120"  
Door thickness: 1-3/8" to 2"

### APPLICATIONS

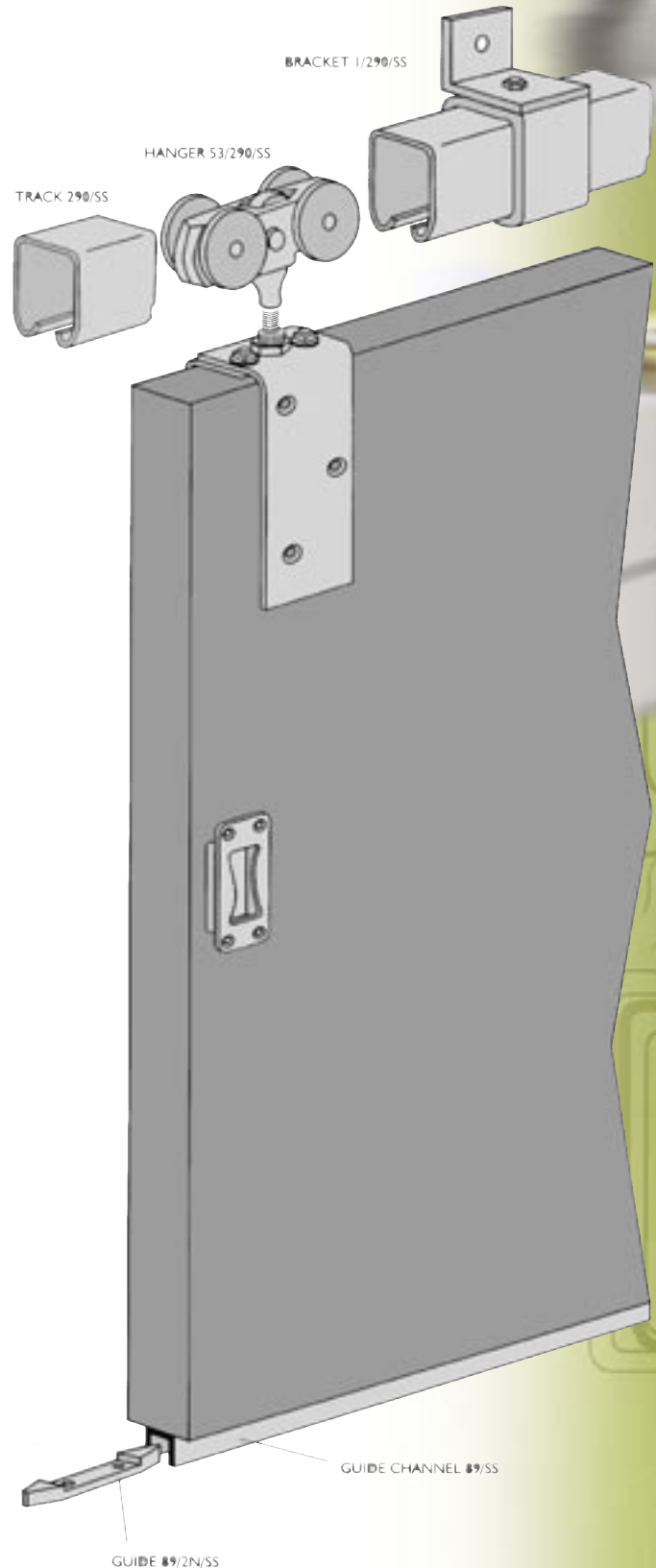
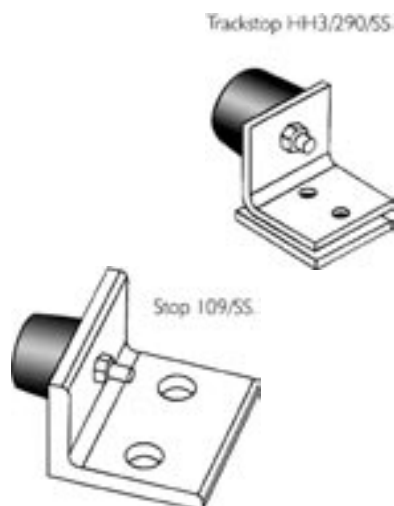
For lightweight doors in abattoirs, boats, oil rigs, food industry, chemical plants etc.

### DOOR TYPES

Wood doors, either solid or glazed, for industrial use require a strong, solid frame. Metal doors can be of angle or box section.

### TECHNICAL INFORMATION

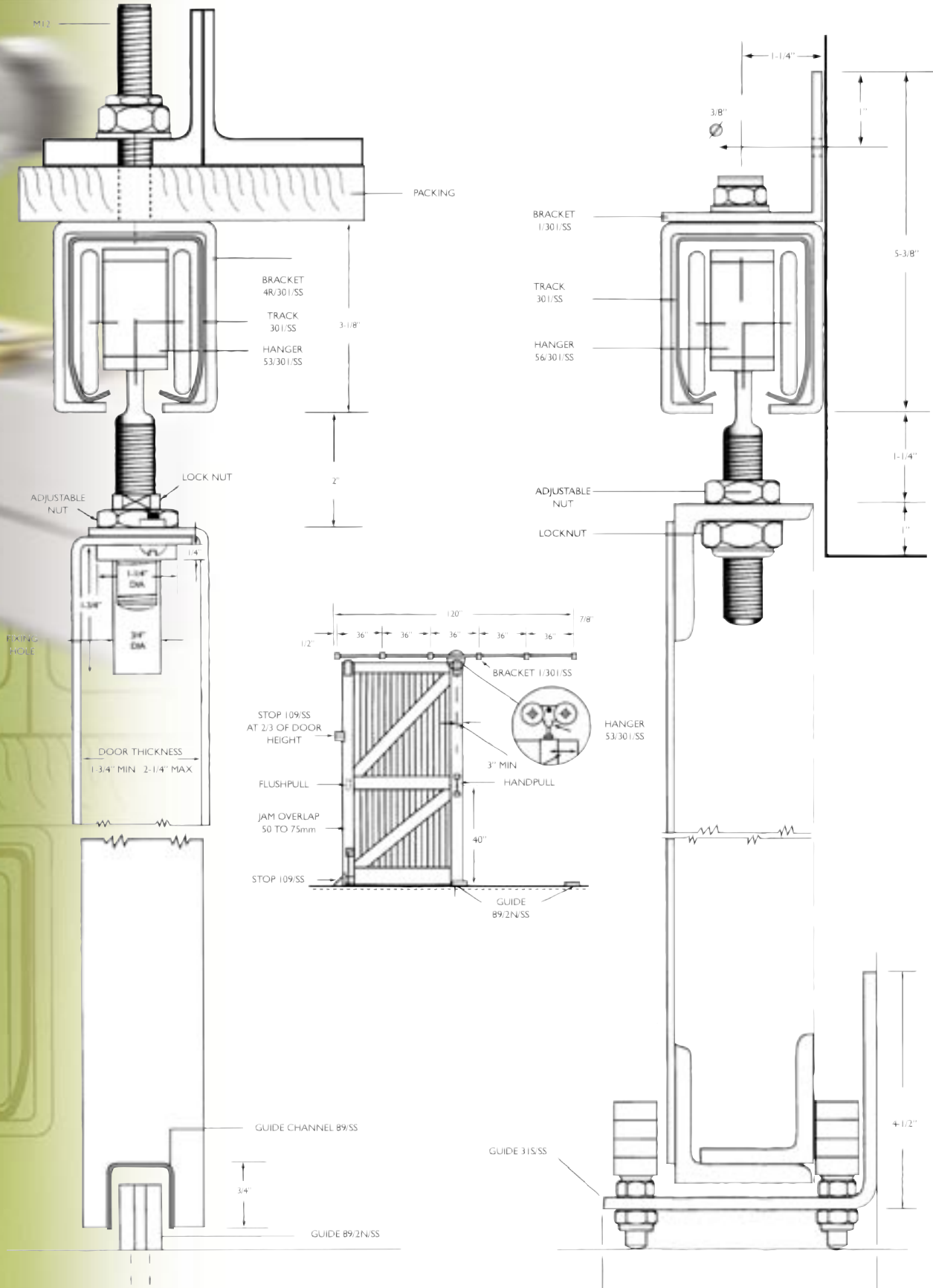
- Track:** 290/SS made from 1/8" thick grade 316L(A4) stainless steel, available in 72" and 96" lengths.
- Brackets:** 1/290/SS in grade 316L(A4) stainless steel for face-fixing or 3/290/SS for soffit mounting. The center-to-center distance of the brackets can vary depending on track length. Recommended spacing is 36" and in case of maximum load 24".
- Hangers and guides:** Hangers 53/290/SS, 57/290/SS and guides 89/2N/SS and 31S/SS are for wood doors. Hangers 56/290/SS with guides 89/2N/SS and 31S/SS are for metal doors. Standard hangers are supplied with a nylon body and grade 304(A2) stainless steel wheels.
- Accessories:** Trackstop HH3/290/SS.



\* Track, brackets and hangers in stainless steel cannot be used with the standard Henderson non-stainless 290 range.

# 301/SS

## STAINLESS STEEL HARDWARE FOR STRAIGHT SLIDING DOORS





# 301/SS

## STAINLESS STEEL HARDWARE FOR TOP-HUNG WOOD OR METAL STRAIGHT SLIDING DOORS

### CAPACITY

Max. door weight: 600 LBS.

Max. door height: 144"

Door thickness: 1-11/16" to 2-1/4"

### APPLICATIONS

For heavy doors or gates in abattoirs, boats, oil rigs etc.  
Most straight sliding doors can be accommodated.

### DOOR TYPES

Wood doors, either solid or glazed, for industrial use require a strong, solid frame. Metal doors can be of angle or box section.

### TECHNICAL INFORMATION

**Track:** 301/SS made from 3/16" thick grade 316L(A4) stainless steel, available in 72" and 96" lengths.

**Brackets:** 1/301/SS in grade 316L(A4) stainless steel is the most popular for face-fixing. The center-to-center distance of the brackets can vary depending on track length. Recommended spacing is 36" and in case of maximum load 24".

**Hangers and guides:** Hangers 53/301/SS, 57/301/SS and guides 89/2N/SS and 31S/SS are for industrial wood doors. Hangers 56/301/SS with guides 89/2N/SS and 31S/SS are for metal doors. Hangers are supplied with a stainless steel body, wheels and bearings.

Trackstop HH3/301/SS



Stop 109/SS



\* Track, brackets and hangers in stainless steel cannot be used with the standard Henderson non-stainless 301/301H range.

DISTRIBUTED IN  
NORTH AMERICA BY



**PEMKO**

**VENTURA, CALIFORNIA**

P.O. BOX 3780 VENTURA, CA 93006  
TELEPHONE: 800.283.9988 FAX: 800.283.4050

**WHITTIER, CALIFORNIA**

12251 EAST COAST DRIVE., WHITTIER, CA 90601  
TELEPHONE: 800.283.9988 FAX: 800.283.4050

**MEMPHIS, TENNESSEE**

P.O. BOX 18966 MEMPHIS, TN 38181-0966  
TELEPHONE: 800.824.3018 FAX: 800.243.3656

**E-MAIL**

[PEMSALES@PEMKO.COM](mailto:PEMSALES@PEMKO.COM)

**WEB**

[WWW.PEMKO.COM](http://WWW.PEMKO.COM)

**HENDERSON**



INVESTOR IN PEOPLE