

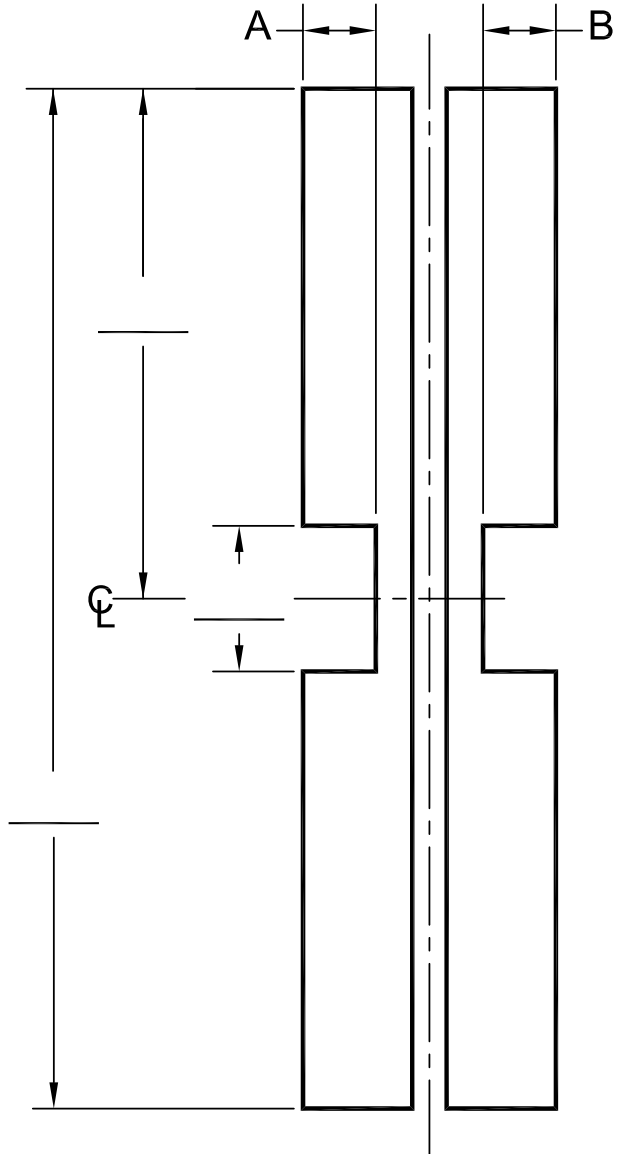
POWER TRANSFER ORDER FORM

STANDARD/HEAVY DUTY AND LEAD LINED
ALUMINUM GEAR HINGE CUTOUT

S/O # _____
 GEAR HINGE P/N _____
 HAND _____
 DATE DUE _____ QUANTITY _____
 CUSTOMER SIGNATURE _____ DATE _____

ABH MODEL	FRAME	A	DOOR	B
A110	ARB1	1.500	ARB2	1.500
A111	ARB8	1.790	ARB17	1.500
A130	ARB21	1.250	ARB2	1.500
A140	ARB1	1.500	ARB7	1.750
A211	ARB18	1.750	ARB5	NO CUT
A213	ARB21	1.250	ARB5	NO CUT
A240	ARB8	1.790	ARB7	1.750
A260	ARB1	1.250	ARB14	1.530
A270	ARB13	1.530	ARB14	1.530
A410	ARB18	1.750	ARB19	1.790
A450	ARB1	1.500	ARB5	NO CUT
A460	ARB8	1.790	ARB5	NO CUT
A530	ARB1	1.500	ARB11	NO CUT
A540	ARB8	1.790	ARB11	NO CUT
A550	ARB21	1.250	ARB11	NO CUT

MANUFACTURER	POWER TRANSFER PART NO.	CUT OUT
ABH	PT105 (SQ. END)	11.500
	PT180 (SQ. END)	20.188
	PTR105 (RAD. END)	12.843
	PTR180 (RAD. END)	21.531
ADAM-RITE	4611 (SQ. END)	11.562
	4611 (SQ. END)	20.218
	4612 (RAD. END)	12.781
	4612 (RAD. END)	21.453
MARKAR	MARKAR CALLS OUT VON DUPRIN CUTOUT	-----
VON DUPRIN	EPT2, EPT10 & PNT1	9.125
RCI	9512 OLD STYLE (SQ. END)	11.562
	9513 OLD STYLE (SQ. END)	20.125
	9512 NEW STYLE (RAD. END)	12.812
	9513 NEW STYLE (RAD. END)	21.500



BRAND NAMES ARE TRADEMARKS OR REGISTERED TRADEMARKS OF THEIR REPECTIVE COMPANIES.

POWER TRANSFER ORDER FORM-INTERNATIONAL DOOR CLOSER-00.DWG

INTERNATIONAL DOOR CLOSER

1140 KRAEMER PLACE, ANAHEIM, CA 92806
 TEL: (714) 666-0390 (800) 544-4422
 FAX: (714) 666-2215

POWER
TRANSFER
ORDER FORM
ISSUED 01-22-10