

Step 5:

Attach Roller Assembly to bottom of door. Use shim plates if necessary.

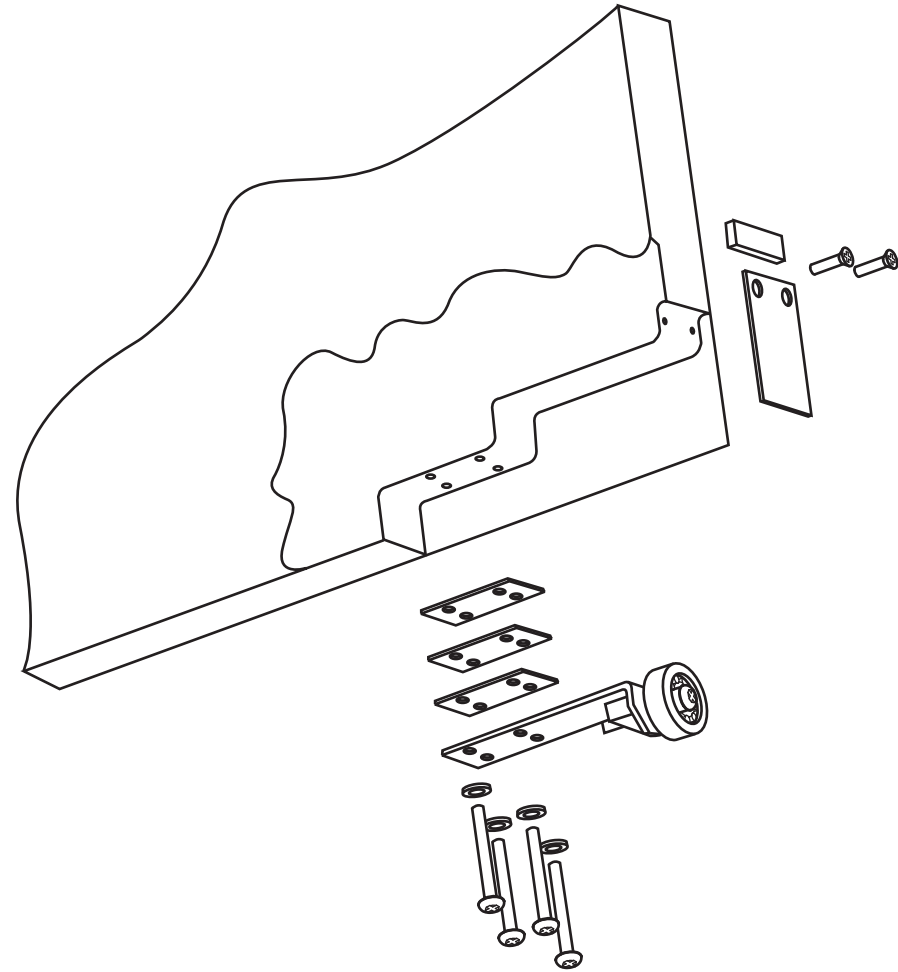


Figure 5: Roller Assembly at bottom of door.

Installation Instructions

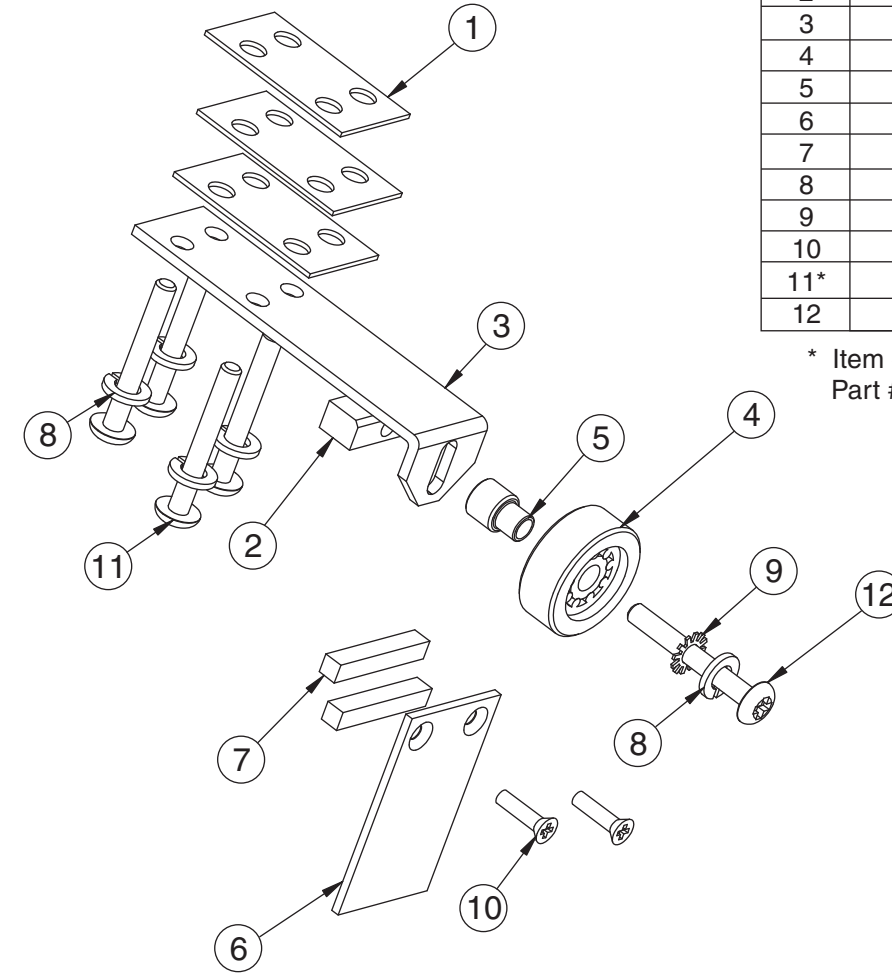
MS120010 (06-09)

Metal Door Thickness: 1-3/4" (44.4) Min.
Door Weight: 730 lbs. Max. for Single Roller

Parts List

Item #	QTY Reqd.	Part #	Description
1	3	10600-003	Shim Plate
2	1	10600-004	Threaded Block
3	1	10600-005	Spring Plate
4	1	10600-006	Roller
5	1	10600-015	Hub-Single Roller
6	1	10600-019	End Cap
7	2	10600-026	Gasket
8	5	1200301-02504	1/4 Lockwasher
9	1	1200901-02502	1/4 Star Washer
10	2	01340410-602	#10-24 x 5/8 FHPMS
11*	4	02344012-602	1/4-20 x 3/4 RHPMS
12	1	04344033-603	1/4-20 x 2 RHPMS

* Item #11 can be replaced with qty. (4) of Part # 04364006, 1/4-20 x 3/8 SS-TRHPMS.



Tools Required (not included)

- Flat Blade Screwdriver
- Phillips Screwdriver



(Door is independently hung)

Step 1

Determine clearance between door and floor as shown in Figure #1. Recommended clearance is 3/16" (4.8). Use .060" (1.5) thick shim plates provided in kit to compensate for large gaps between door and floor.

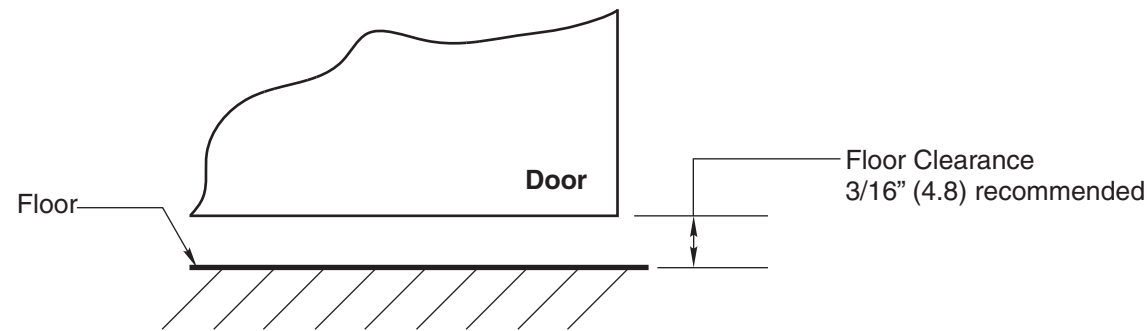


Figure 1: Clearance between door and floor.

Step 2: Metal Door Cutout, (Door Weldment–With Installation Bracket)

Weld recommended Installation Bracket 10600BKT to skins of metal door. Make appropriate modifications to bottom of metal door per dimensions in template #MS120020. Do not cut into skins of door, except for skin at edge of door. A cover plate included in kit will replace removed door edge skin.

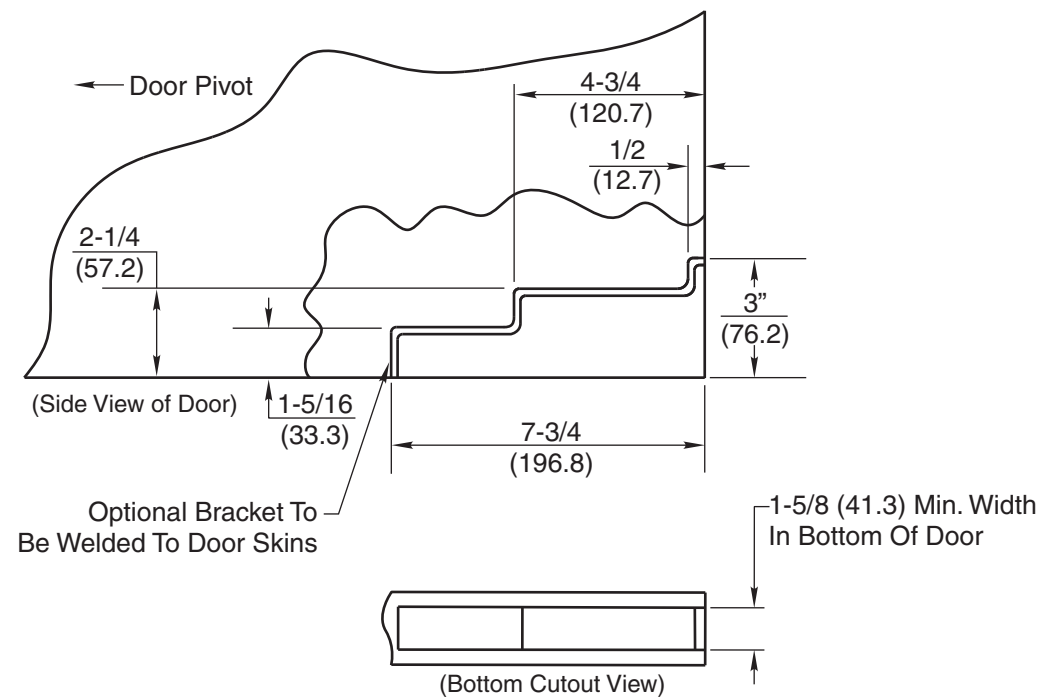


Figure 2: Installation plate welded at bottom of metal door.

Step 3: Metal Door Cutout, (Hole Locations–No Installation Plate)

If Installation Plate is not needed and reinforcement needs to be attached to Roller Mate Assembly, drill and tap holes at bottom of metal door per Figure 3 or refer to template #MS120020. Optional: Remove skin at edge of door (see Step 2) and attach cover plate provided in kit. See Step 4 if removing skin at edge of door is not desired.

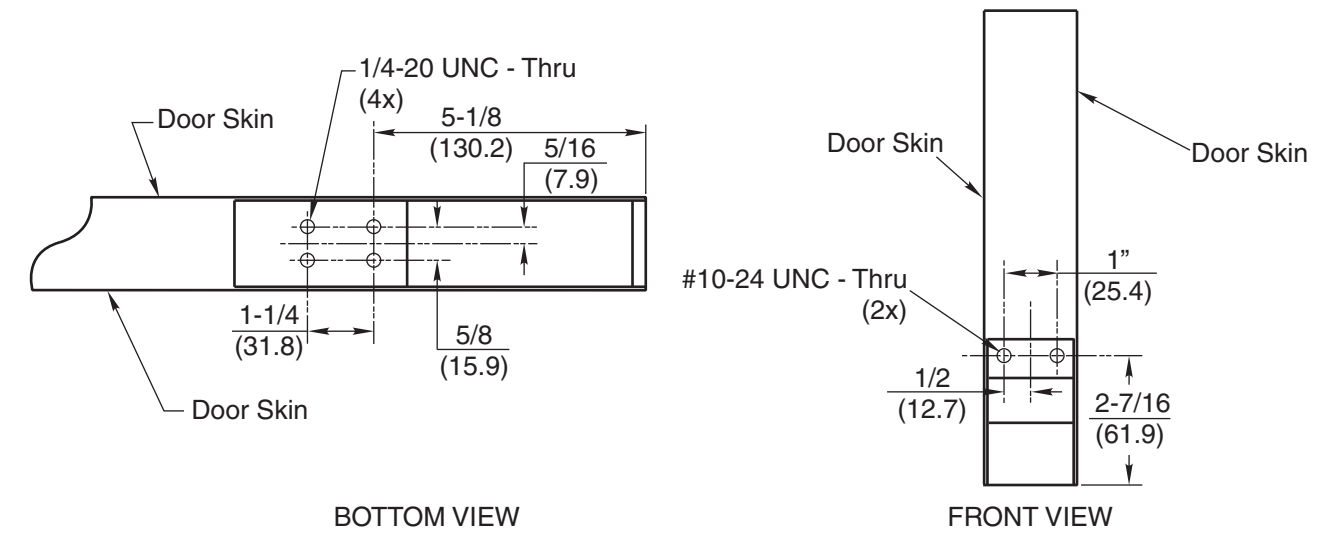


Figure 3: Location of drilled and tapped holes in bottom of metal door.

Step 4: Metal Door Cutout, (Edge Slot Cutout–No Front Cover Plate)

If Installation Plate and Front Cover Plate are not desired, cut a slot in skin at edge of door, per cutout dimensions in Figure 4.

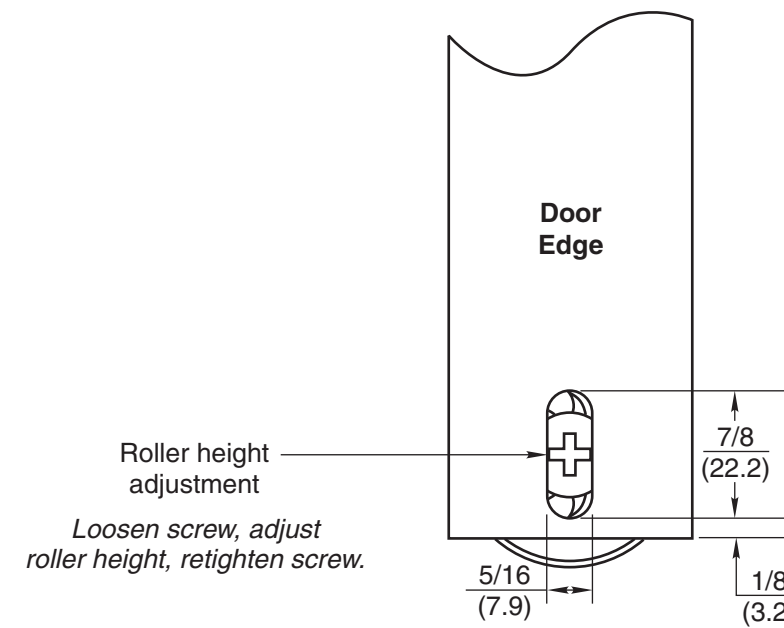


Figure 4: Slot cutout dimensions in skin at edge of door.