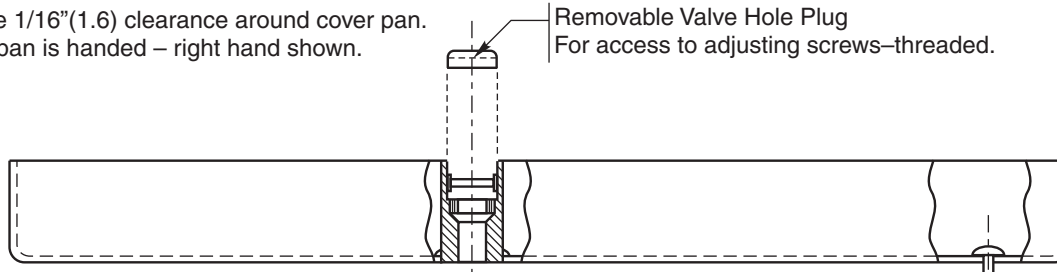


NOTE: Provide 1/16" (1.6) clearance around cover pan. Cover pan is handed – right hand shown.

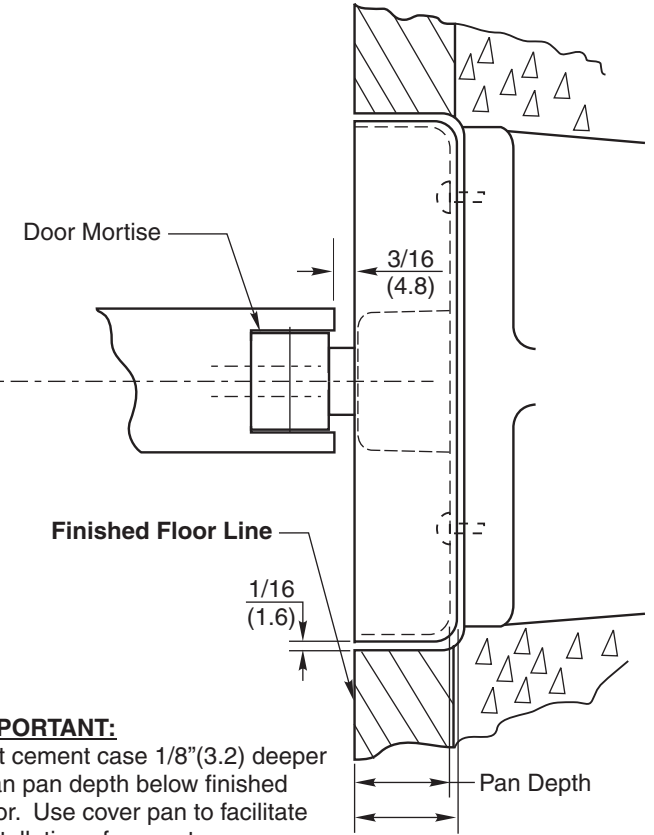
Removable Valve Hole Plug
For access to adjusting screws—threaded.



DO NOT SCALE DRAWING
Dimensions given in inches (mm).
See Template CH20105 for closer info.

NOTE: Material Thickness
Brass – .050" (1.3)
Stainless Steel – .048" (1.2)

Brass Aligning Pin – Pin to guide on floor closer screw holes (4). Pan is not fastened to floor closer.



IMPORTANT:
Set cement case 1/8" (3.2) deeper than pan depth below finished floor. Use cover pan to facilitate installation of cement case.

Cover Pan #	Pan Depth	Spindle Size	Door Mortise
2237-1	7/8 (22.2)	1/2" (12.7) Longer	11/16 (27)
2237-2	1/4 (6.4)	Regular	11/16 (17.5)
2237-3	3.8 (9.5)	Regular	9/16 (14.3)
2237-4	1/2 (12.7)	1/2" (12.7) Longer	15/16 (23.8)
2237-5	5/8 (15.9)	1/2" (12.7) Longer	13/16 (20.6)
2237-6	3/4 (19)	1/2" (12.7) Longer	11/16 (17.5)
2237-7	1 (25.4)	1" (25.4) Longer	15/16 (23.8)
2237-8	1-1/4 (31.8)	1" (25.4) Longer	11/16 (17.5)
2237-9	1-1/2 (38.1)	1-1/2" (38.1) Longer	15/16 (23.8)
2237-10	1-3/4 (44.5)	2" (50.8) Longer	1-3/16 (30.2)
2237-11	2 (50.8)	2" (50.8) Longer	15/16 (23.8)

2237 Cover Pan For 28 x 554 Arm

RIXSON

ASSA ABLOY

www.rixson.com

TEMPLATE NUMBER

MS140030

DATE

07-08