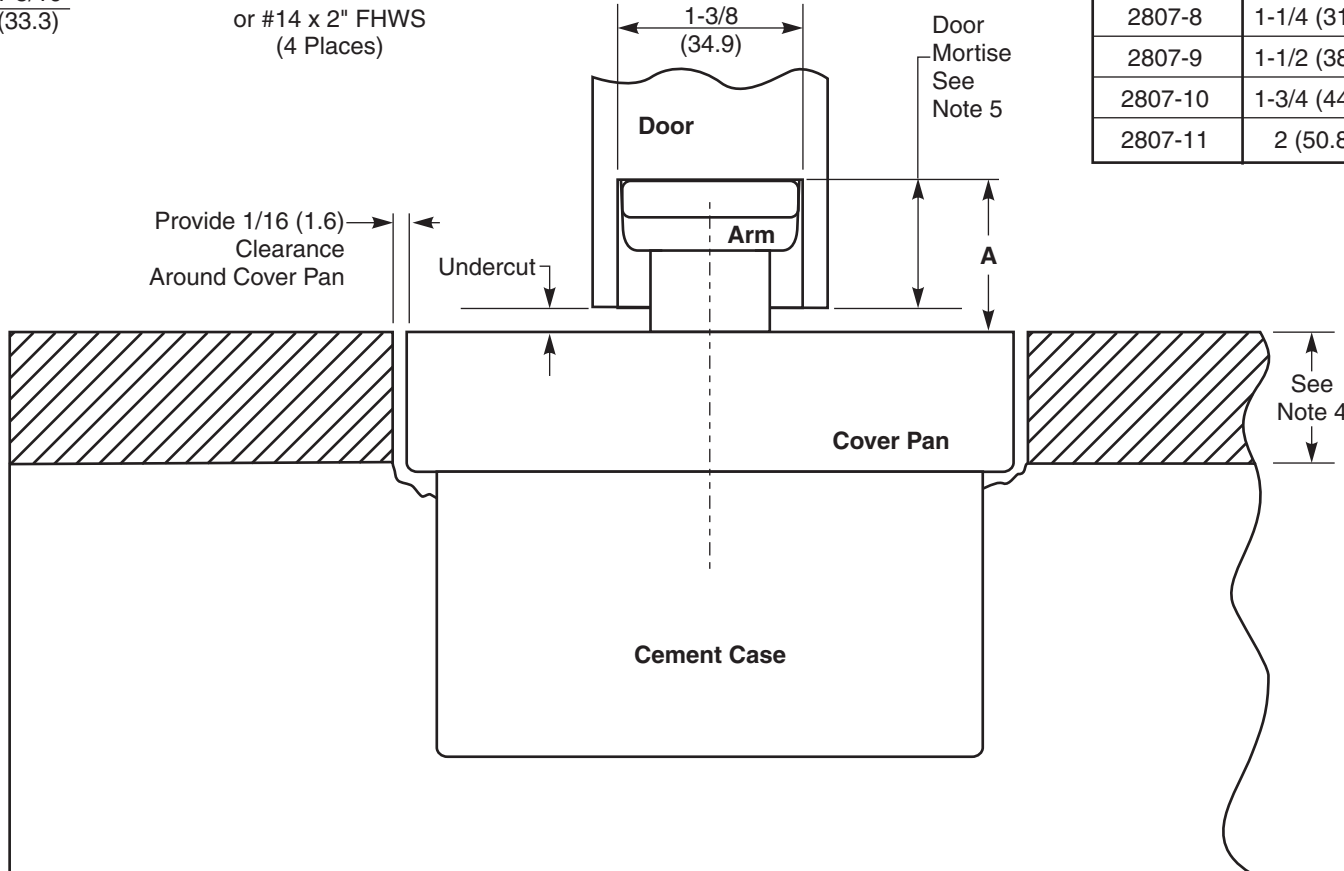


Cover Pan #	Pan Depth	Spindle Size	Dim A	Max Undercut
2807-1	7/8 (22.2)	1/2" (12.7) Longer	15/16 (23.8)	5/16 (7.9)
2807-2	1/4 (6.4)	Regular	1-1/16 (27)	7/16 (11.1)
2807-3	3/8 (9.5)	Regular	15/16 (23.8)	5/16 (7.9)
2807-4	1/2 (12.7)	1/2" (12.7) Longer	1-5/16 (33.3)	11/16 (17.5)
2807-5	5/8 (15.9)	1/2" (12.7) Longer	1-3/16 (30.2)	9/16 (14.3)
2807-6	3/4 (19)	1/2" (12.7) Longer	1-1/16 (27)	7/16 (11.1)
2807-7	1 (25.4)	1" (25.4) Longer	1-5/16 (33.3)	11/16 (17.5)
2807-8	1-1/4 (31.8)	1" (25.4) Longer	1-1/16 (27)	7/16 (11.1)
2807-9	1-1/2 (38.1)	1-1/2" (38.1) Longer	1-5/16 (33.3)	11/16 (17.5)
2807-10	1-3/4 (44.4)	1-1/2" (38.1) Longer	1-1/16 (27)	7/16 (11.1)
2807-11	2 (50.8)	2" (50.8) Longer	1-5/16 (33.3)	11/16 (17.5)



**NOTE:**

1. Do not scale drawing.
2. It is suggested that a divider be placed around the pan and that the height be equal to the height of the cover pan.
3. For additional installation details see template CH20402.
4. Set cement case 1/16" (1.6) lower than depth of cover pan ordered. Use cover pan to facilitate installation of cement case.
5. To determine door mortise, subtract desired undercut from the "A" dimension.
6. All dimensions given in inches (mm).

**CAUTION:** Prevent grout from collecting between the closer and cement case in the event it may be necessary to remove the closer after the grout is set.

**2807 Cover Pan  
For 50 x 554 Arm**

**RIXSON®**

**ASSA ABLOY**

www.rixson.com

TEMPLATE NUMBER

**MS140012**

DATE

**04-09**