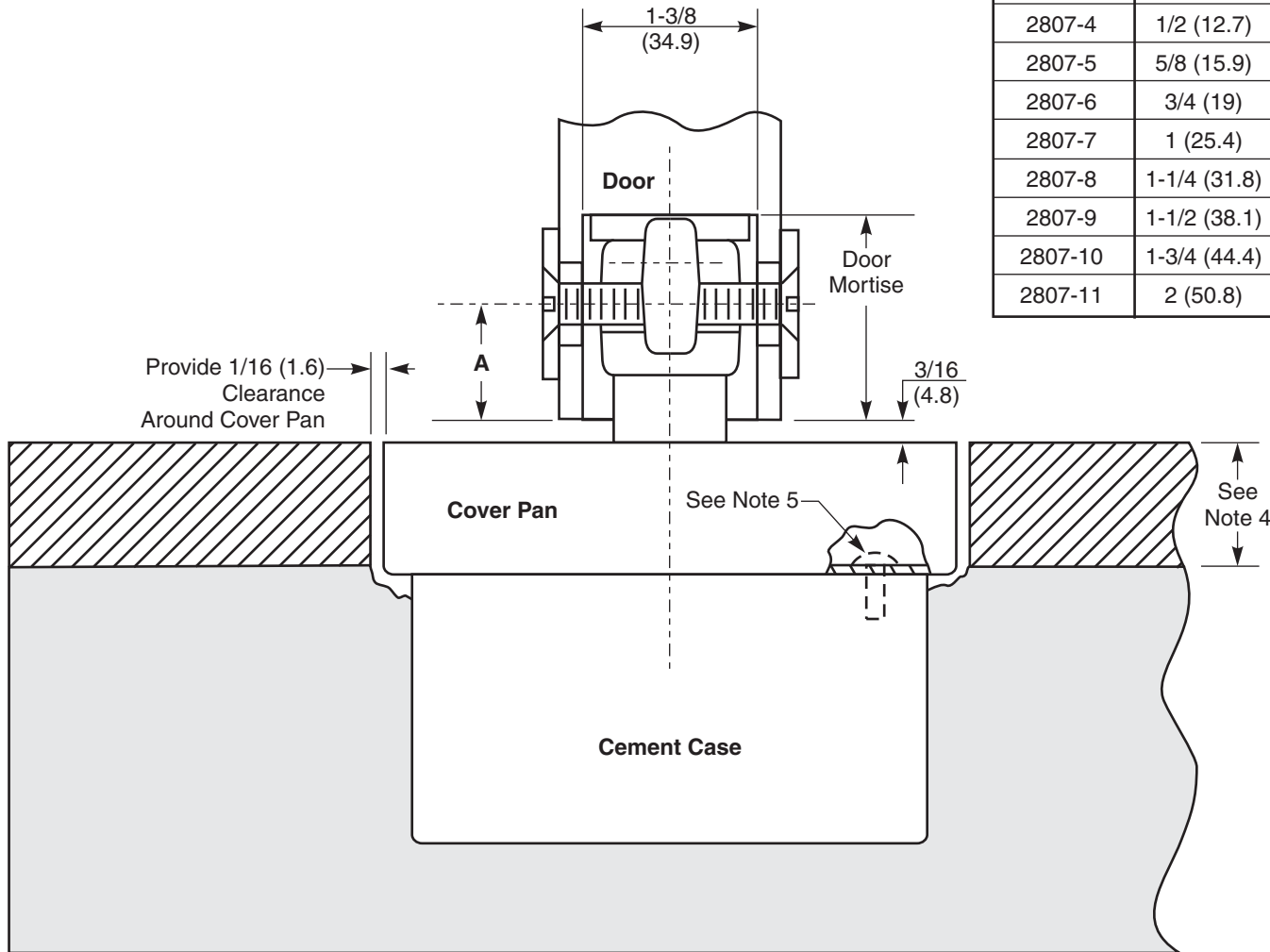


Cover Pan #	Pan Depth	Spindle Size	Door Mortise	Dim. A
2807-1	7/8 (22.2)	1/2" (12.7) Longer	1-3/16 (30.2)	7/8 (22.2)
2807-2	1/4 (6.4)	Regular	1-5/16 (33.3)	1 (25.4)
2807-3	3/8 (9.5)	Regular	1-3/16 (30.2)	7/8 (22.2)
2807-4	1/2 (12.7)	1/2" (12.7) Longer	1-9/16 (39.7)	7/8 (22.2)
2807-5	5/8 (15.9)	1/2" (12.7) Longer	1-7/16 (36.5)	3/4 (19)
2807-6	3/4 (19)	1/2" (12.7) Longer	1-5/16 (33.3)	1 (25.4)
2807-7	1 (25.4)	1" (25.4) Longer	1-9/16 (39.7)	7/8 (22.2)
2807-8	1-1/4 (31.8)	1" (25.4) Longer	1-5/16 (33.3)	1 (25.4)
2807-9	1-1/2 (38.1)	1-1/2" (38.1) Longer	1-9/16 (39.7)	7/8 (22.2)
2807-10	1-3/4 (44.4)	1-1/2" (38.1) Longer	1-5/16 (33.3)	1 (25.4)
2807-11	2 (50.8)	2" (50.8) Longer	1-9/16 (39.7)	7/8 (22.2)



NOTE:

1. Do not scale drawing.
2. It is suggested that a divider be placed around the pan and that the height be equal to the height of the cover pan.
3. For additional installation details see template CH20400.
4. Set cement case 1/16" (1.6) lower than depth of cover pan ordered. Use cover pan to facilitate installation of cement case.
5. Brass alignment pins (4) to align pan with closer. Pan is not fastened to floor closer.
6. All dimensions given in inches (mm).

CAUTION: Prevent grout from collecting between the closer and cement case in the event it may be necessary to remove the closer after the grout is set.

**Cover Pan 2807A
For 50 Closer with Centering Arm**

RIXSON®

ASSA ABLOY

www.rixson.com

TEMPLATE NUMBER

DATE

MS140015

04-09