

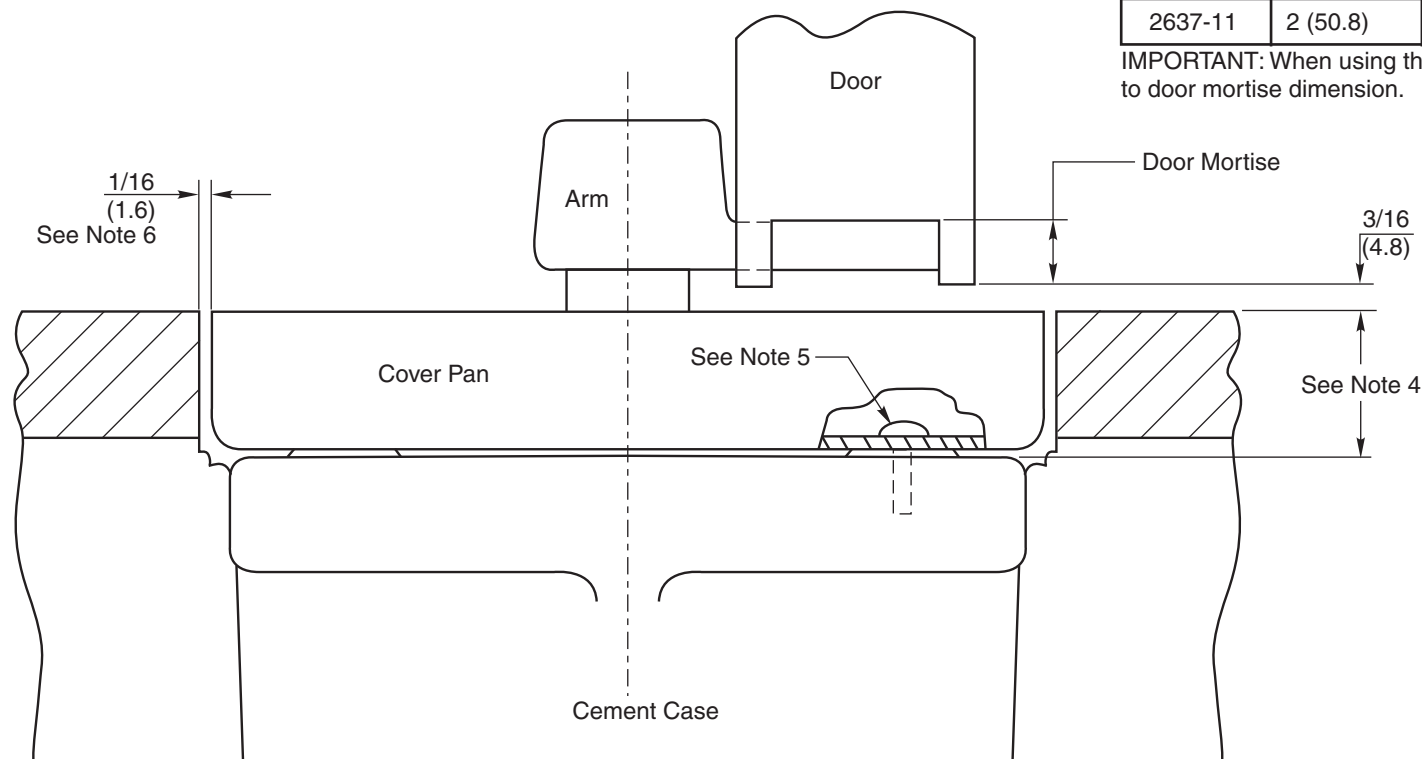
Notes:

1. Do not scale drawing.
2. This template can be used with standard 3/4" (19) offset arm and 1-1/2" offset arm.
3. For additional installation details see template OS10200.
4. Set cement case 1/16" (1.6) lower than depth of cover pan ordered. Use cover pan to facilitate installation of cement case.
5. Brass alignment pins furnished to align pan with closer. Pan is not fastened to floor closer.
6. Provide 1/16" (1.6) clearance around cover pan.
7. All dimensions are in inches (mm).

CAUTION: Prevent grout from collecting between the closer and cement

Cover Pan #	Pan Depth	Spindle Size	Door Mortise
2637-1	7/8 (22.2)	1/2" (12.7) Longer	7/16 (11.1)
2637-2	1/4 (6.4)	Regular	9/16 (14.3)
2637-3	3/8 (9.5)	Regular	7/16 (11.1)
2637-4	1/2 (12.7)	Regular	5/16 (7.9)
2637-5	5/8 (15.9)	1/2" (12.7) Longer	11/16 (17.5)
2637-6	3/4 (19)	1/2" (12.7) Longer	9/16 (14.3)
2637-7	1 (25.4)	1/2" (12.7) Longer	5/16 (7.9)
2637-8	1-1/4 (31.8)	3/4" (19) Longer	5/16 (7.9)
2637-9	1-1/2 (38.1)	1" (25.4) Longer	5/16 (7.9)
2637-10	1-3/4 (44.4)	1-1/2" (38.1) Longer	9/16 (14.3)
2637-11	2 (50.8)	1-1/2" (38.1) Longer	5/16 (7.9)

IMPORTANT: When using the 1-1/2" (38.1) offset arm, add 3/8" (9.5) to door mortise dimension.



DO NOT SCALE DRAWING

Cover Pan 2637 for 51 Closer

RIXSON®

ASSA ABLOY

www.rixson.com

TEMPLATE NUMBER

MS140005

DATE

04-09