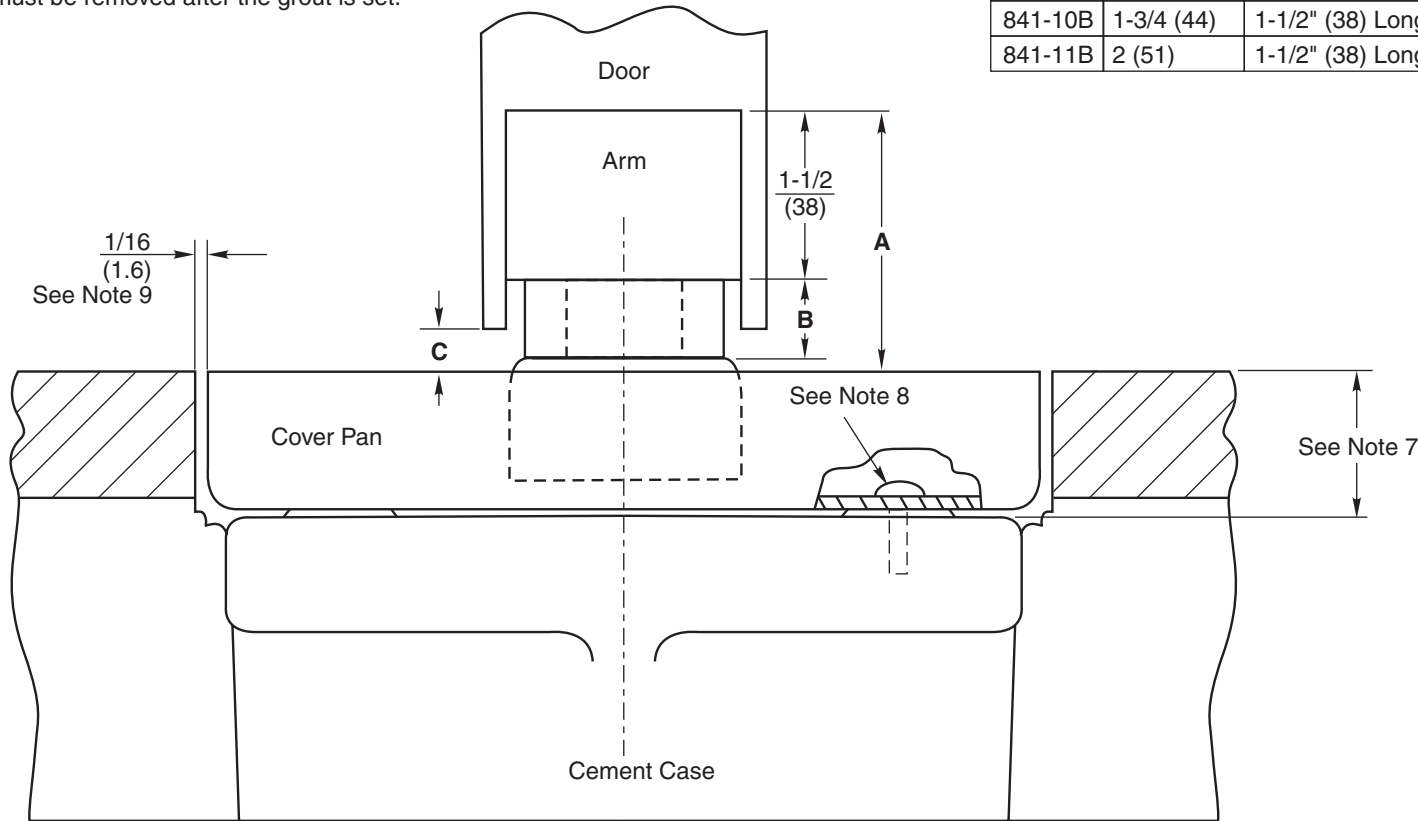


Notes:

1. Do not scale drawing.
2. "B" Dimension is the shim thickness required between arm and bearing.
3. "C" Dimension is the maximum undercut allowed.
4. This template is for a 2" thick door or larger.
5. For 1-3/4" thick doors specify SPLO-587.
6. For additional installation details see templates CH20200 or CH20110.
7. Set cement case 1/8" (3.2) lower than depth of cover pan ordered. Use cover pan to facilitate installation of cement case.
8. Brass alignment pins furnished to align pan with closer. Pan is not fastened to floor closer.
9. Provide 1/16" (1.6) clearance around cover pan.
10. All dimensions are given in inches (mm).

CAUTION: Prevent grout from collecting between the closer and cement case in the event closer must be removed after the grout is set.

Cover Pan No.	Pan Depth	Spindle Size	A	B	C
841-1B	7/8 (22)	1/2" (13) Longer	2-1/8 (54)	1/2 (13)	5/8 (16) MAX
841-2B	1/4 (6)	Regular	2-1/4 (57)	0	3/4 (19) MAX
841-3B	3/8 (10)	Regular	2-1/8 (54)	0	5/8 (16) MAX
841-4B	1/2 (13)	Regular	2 (51)	0	1/2 (13) MAX
841-5B	5/8 (16)	1/2" (13) Longer	2-3/8 (60)	1/2 (13)	7/8 (22) MAX
841-6B	3/4 (19)	1/2" (13) Longer	2-1/4 (57)	1/2 (13)	3/4 (19) MAX
841-7B	1 (25)	1/2" (13) Longer	2 (51)	1/2 (13)	1/2 (13) MAX
841-8B	1-1/4 (32)	1" (25) Longer	2-1/4 (57)	1 (25)	3/4 (19) MAX
841-9B	1-1/2 (38)	1" (25) Longer	2 (51)	1 (25)	1/2 (13) MAX
841-10B	1-3/4 (44)	1-1/2" (38) Longer	2-1/4 (57)	1-1/2 (38)	3/4 (19) MAX
841-11B	2 (51)	1-1/2" (38) Longer	2 (51)	1-1/2 (38)	1/2 (13) MAX



H28 and H28 x 587 Arm Cover Pan

RIXSON®

ASSA ABLOY

www.rixson.com

TEMPLATE NUMBER

MS140110

DATE

10-12