

Installation Instructions

I. Header Preparation

- Dimension "A" must be maintained from jamb to centerline of spindle.
- 2-3/4" (69.9) must be maintained from hinge side of header to centerline of spindle regardless of header width.
- For closer installation see Template OC60480B.

II. Door Preparation

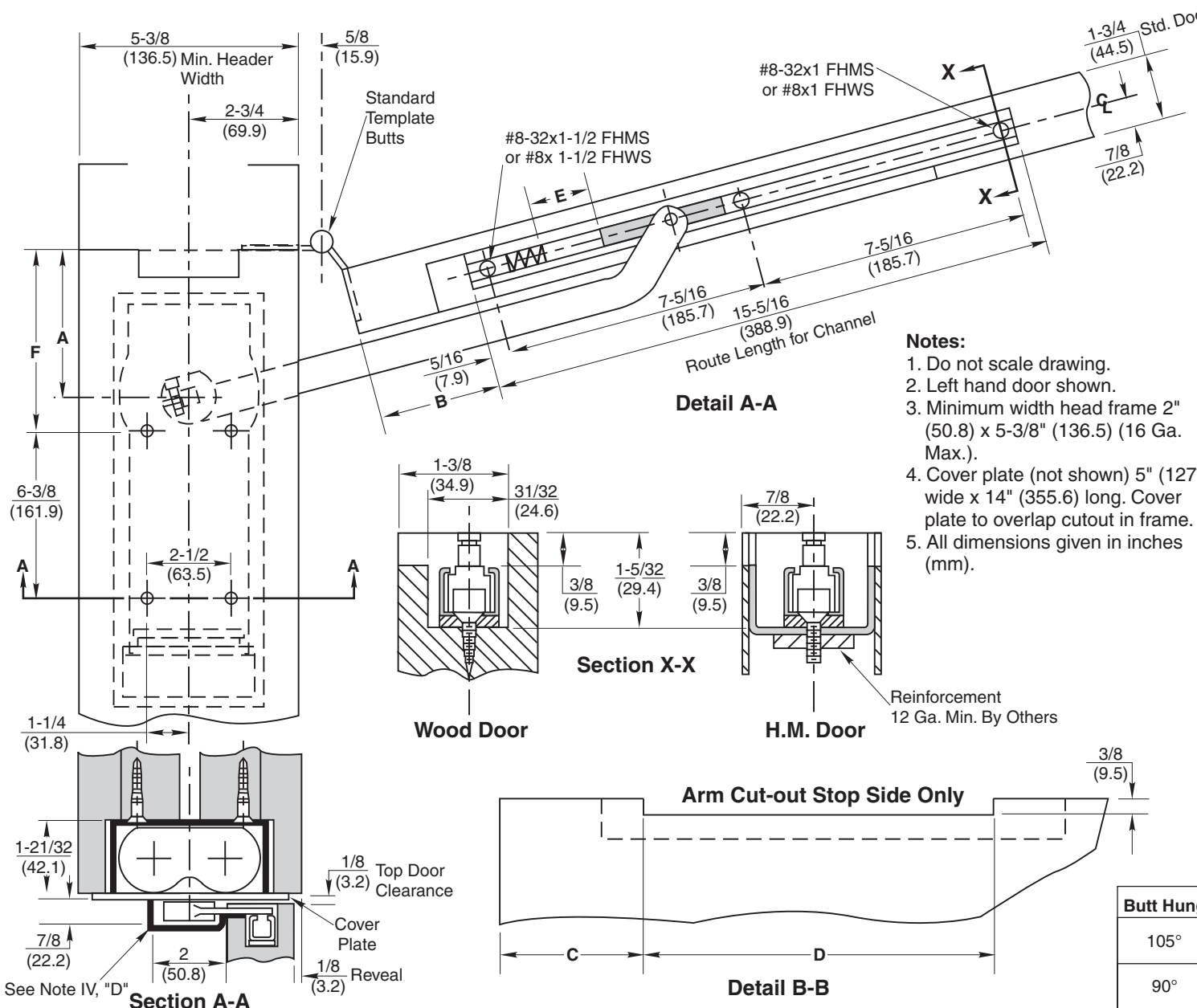
- Route top of door for slide channel installation (Detail A-A). On metal doors, spacers may be needed to maintain required 3/8" (9.5) dimension from top of door to top of slide channel (Section X-X).
- Routing is needed on stop side of door for arm clearance. (Detail B-B).
- Prepare door for butts as normal.

III. Door Installation

- Standard door clearances are to be maintained.
- Prepare framing for template butts as normal.
- Install "E" buffer and arm slider.
- Hang door.

IV. Complete Installation

- Mount arm on spindle and secure with 1/4-20x7/8" socket head cap screw provided.
- Open door and actuate arm into open position. Slip arm over slide pin and secure with e type retainer clip.
- Adjust closer to desired door speed.
- Install removable stop by others.



- Notes:**
- Do not scale drawing.
 - Left hand door shown.
 - Minimum width head frame 2" (50.8) x 5-3/8" (136.5) (16 Ga. Max.).
 - Cover plate (not shown) 5" (127) wide x 14" (355.6) long. Cover plate to overlap cutout in frame.
 - All dimensions given in inches (mm).

Butt Hung	A	B	C	D	E	F
105°	4 (101.6)	3-5/16 (84.1)	4-11/16 (119.1)	11-1/2 (292.1)	1-3/8 (34.9)	4-11/16 (119.1)
90°	2-7/8 (73)	3-5/8 (92.1)	5-11/16 (144.5)	9-3/4 (247.7)	2 (50.8)	3-9/16 (90.5)

W0608 Series Overhead Concealed Door Closer Butt Hung

RIXSON®
ASSA ABLOY

www.rixson.com

TEMPLATE NUMBER

OC60480A

DATE

05-09