

780-211HD

Heavy Duty
Half Surface Hinge



Application:

- Frame leaf wrap-around reinforcement for damaged frames
- Security moldings
- 1/16" (1.5 mm) inset

PRODUCT SPECIFICATIONS

CLEARANCE:

- 5/32" (4 mm) minimum recommended hinge side
- Plus standard lockside clearance

FASTENERS:

- 1/4-20 x 1-1/4" Sexbolt (Screw + Post)
- #12-24 X 11/16" Flat Head Self-Drill Screws

LENGTH OPTIONS:

- Standard and Custom

DOOR REINFORCEMENT:

- None required

FRAME REINFORCEMENT:

- None required to 200 lbs. Heavier weight use 16-gauge channel.

FIRE RATING:

- Up to 3 hr. metal and 90 min. wood composite (with studs)

WARRANTY:

- All Roton products have a lifetime warranty. When ordering electric Roton, the electric portion of the hinge has a one-year warranty.

MATERIAL:

- Aluminum 6063-T6

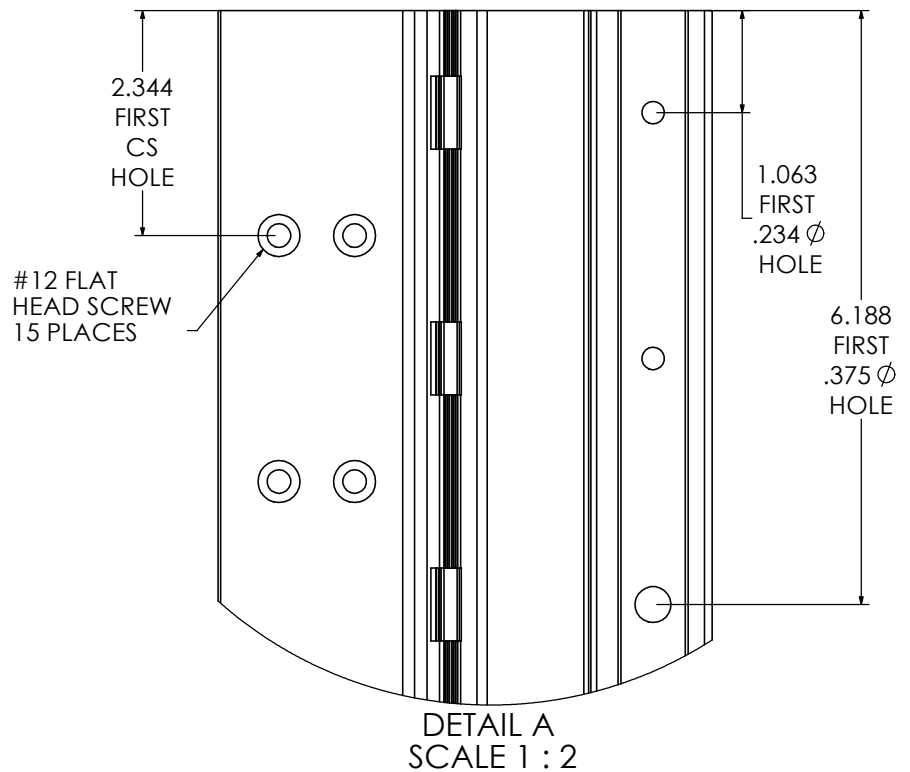
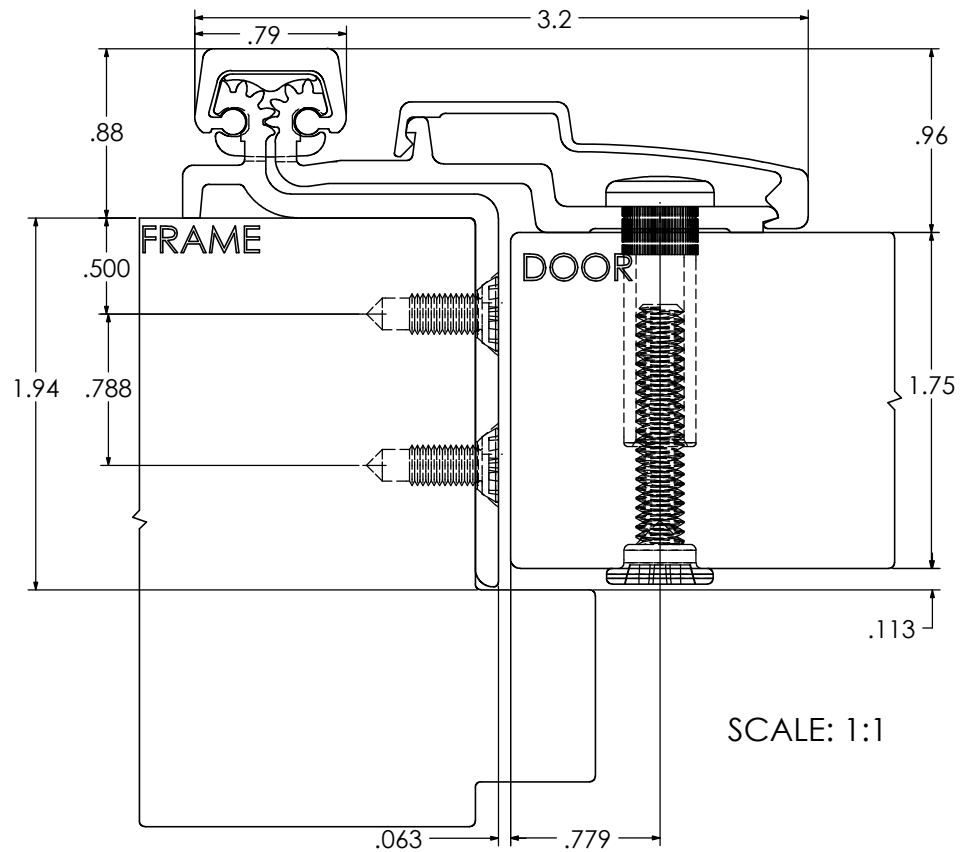
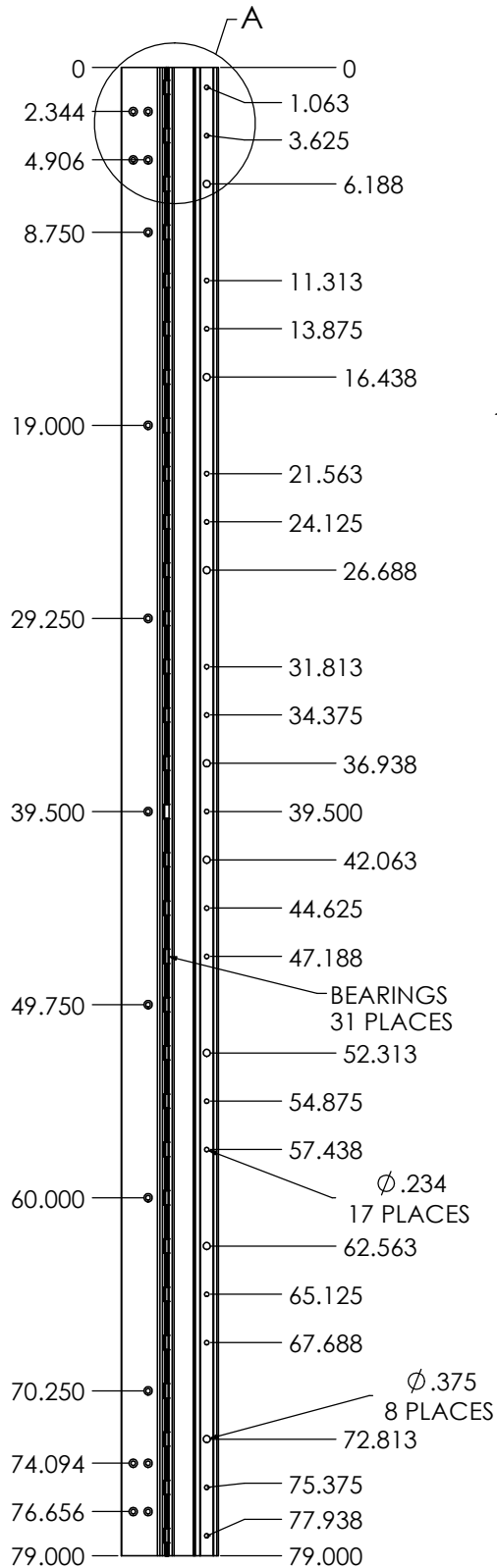
EPD:

- [Roton Continuous Hinges Environmental Product Declaration](#)

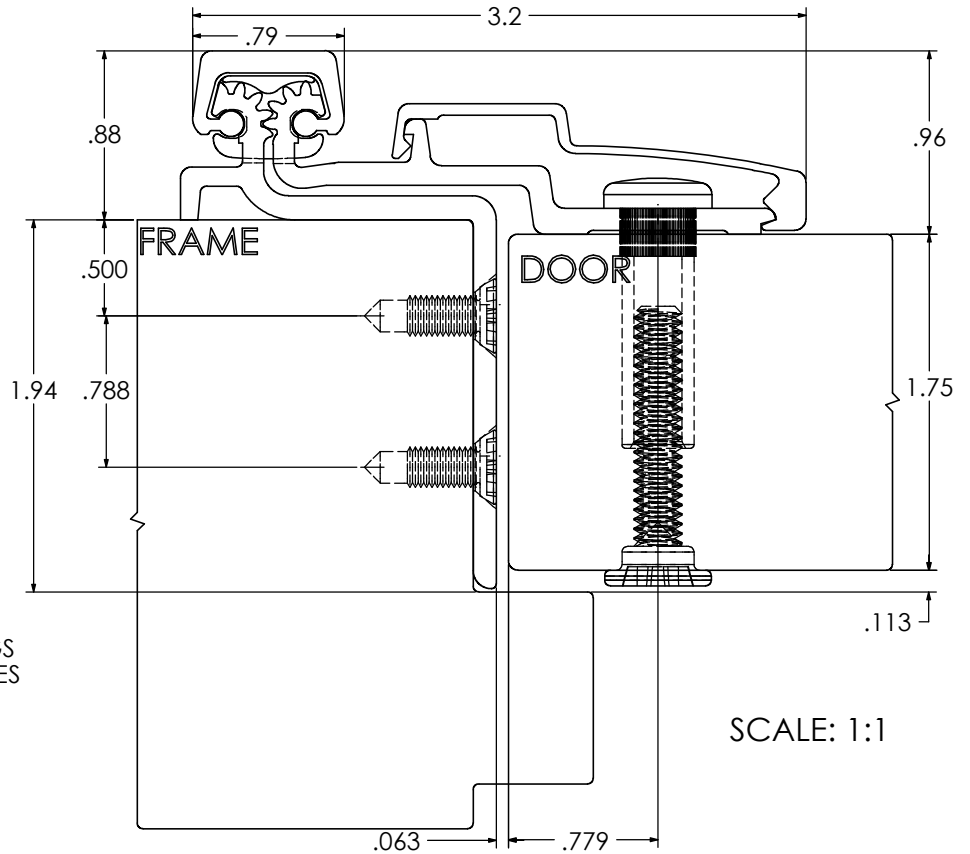
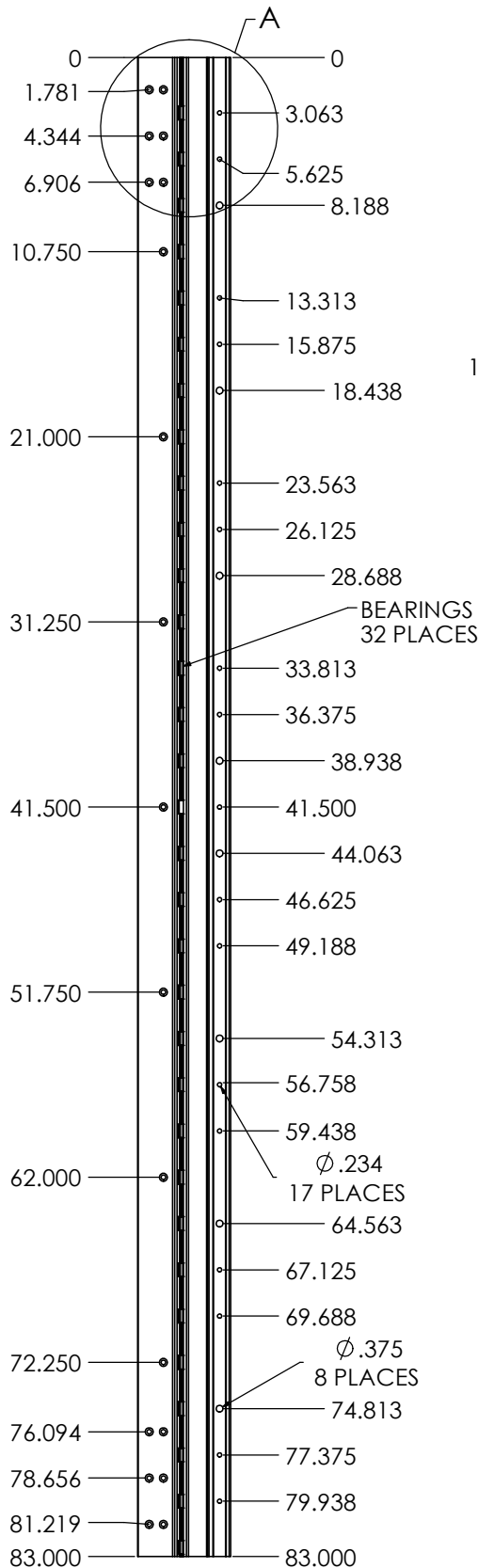
PRODUCT SIZE OPTIONS

LENGTH (INCHES)	LENGTH (MM)	SCREWS (DOOR)	PAN HEAD (DOOR)	SCREWS (JAMB)
79	2007	8	17	15
83	2108	8	19	19
85	2159	8	19	19
95	2413	10	19	20
119	3023	12	23	26

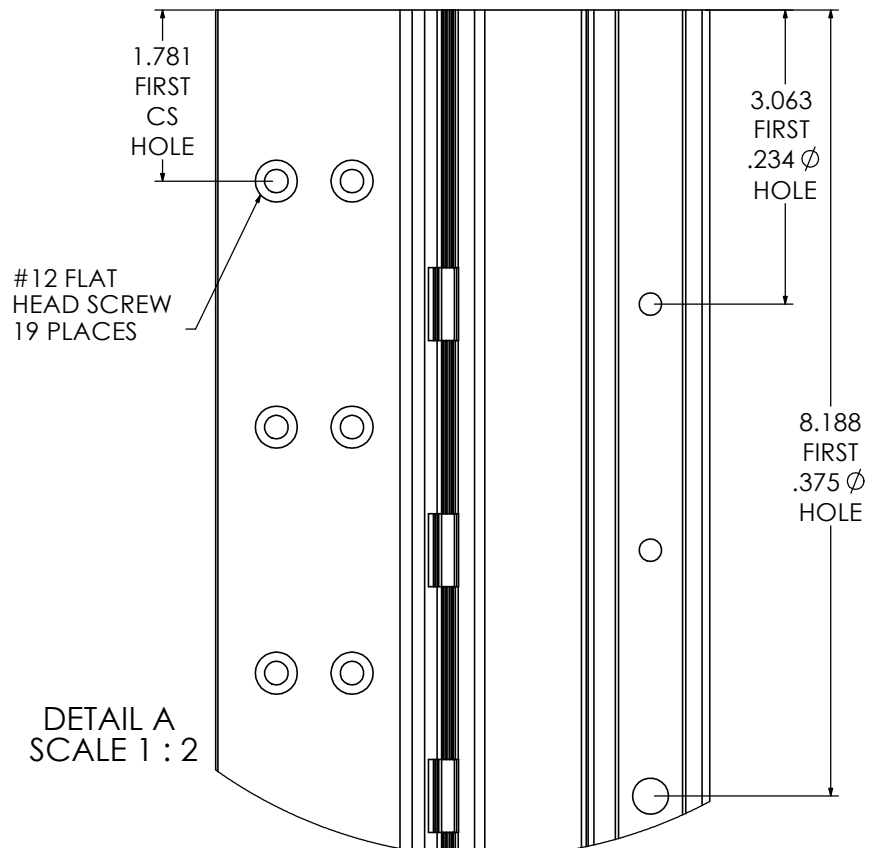
TEMPLATE FOR HALF SURFACE CONTINUOUS GEARED ALUMINUM HINGE



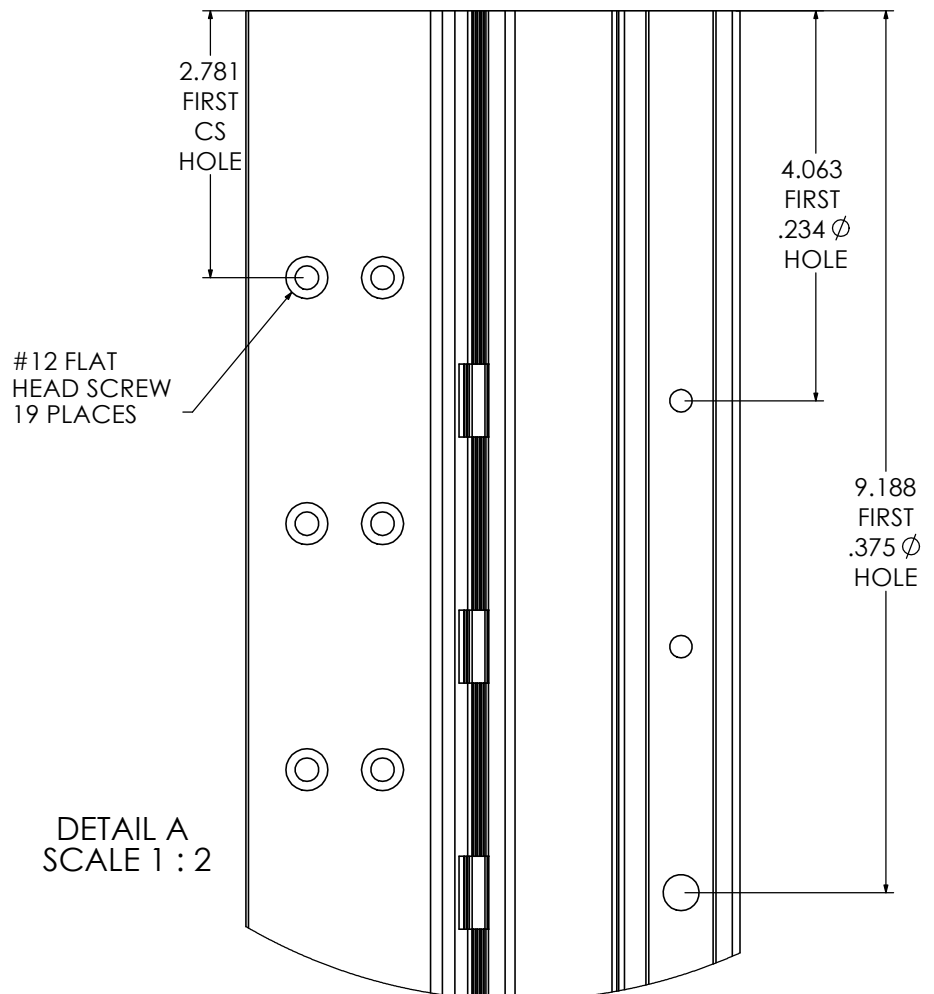
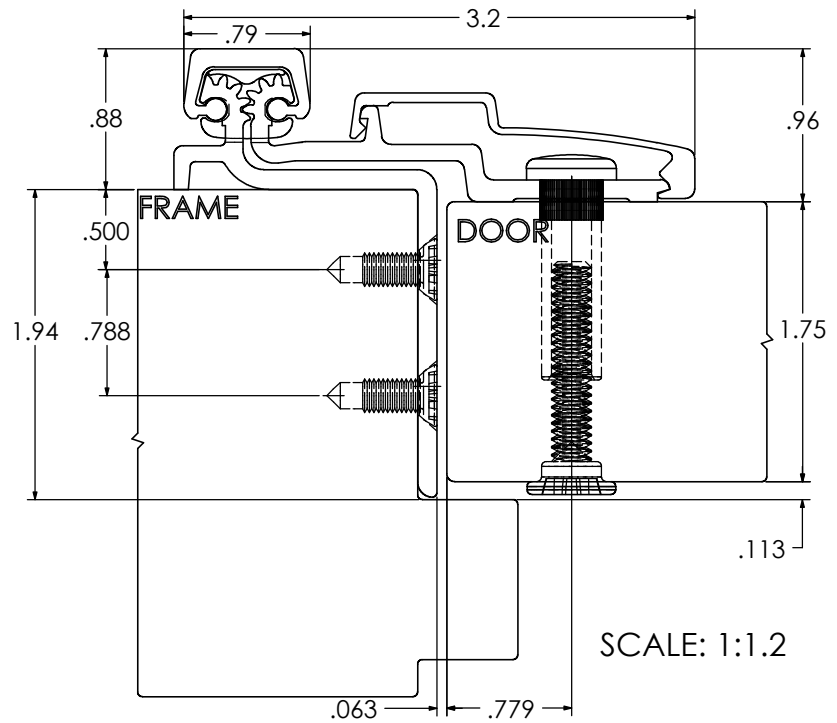
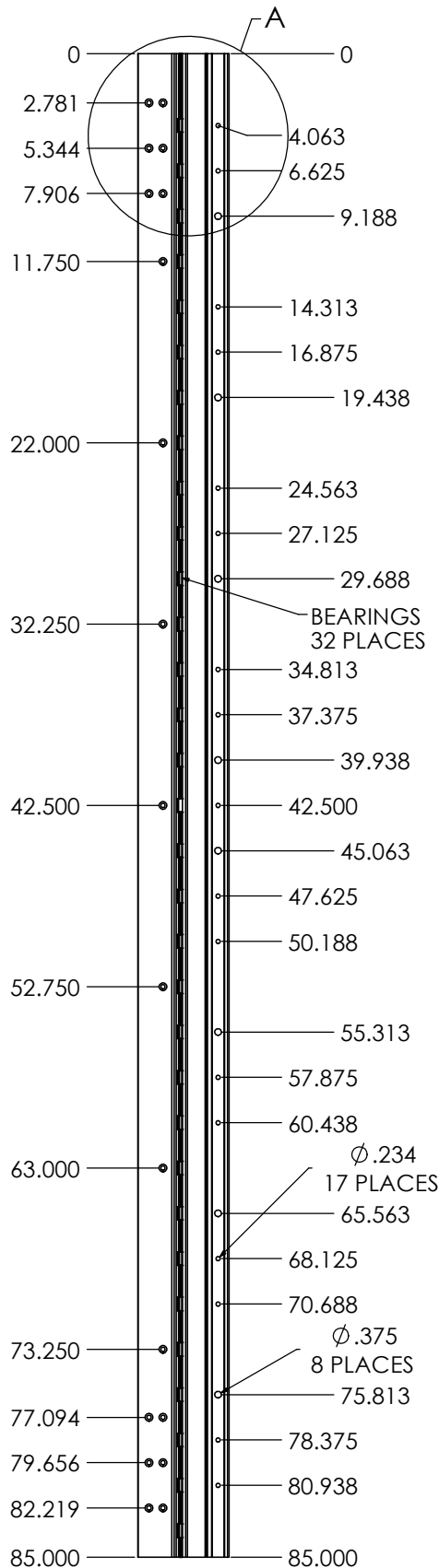
TEMPLATE FOR HALF SURFACE CONTINUOUS GEARED ALUMINUM HINGE



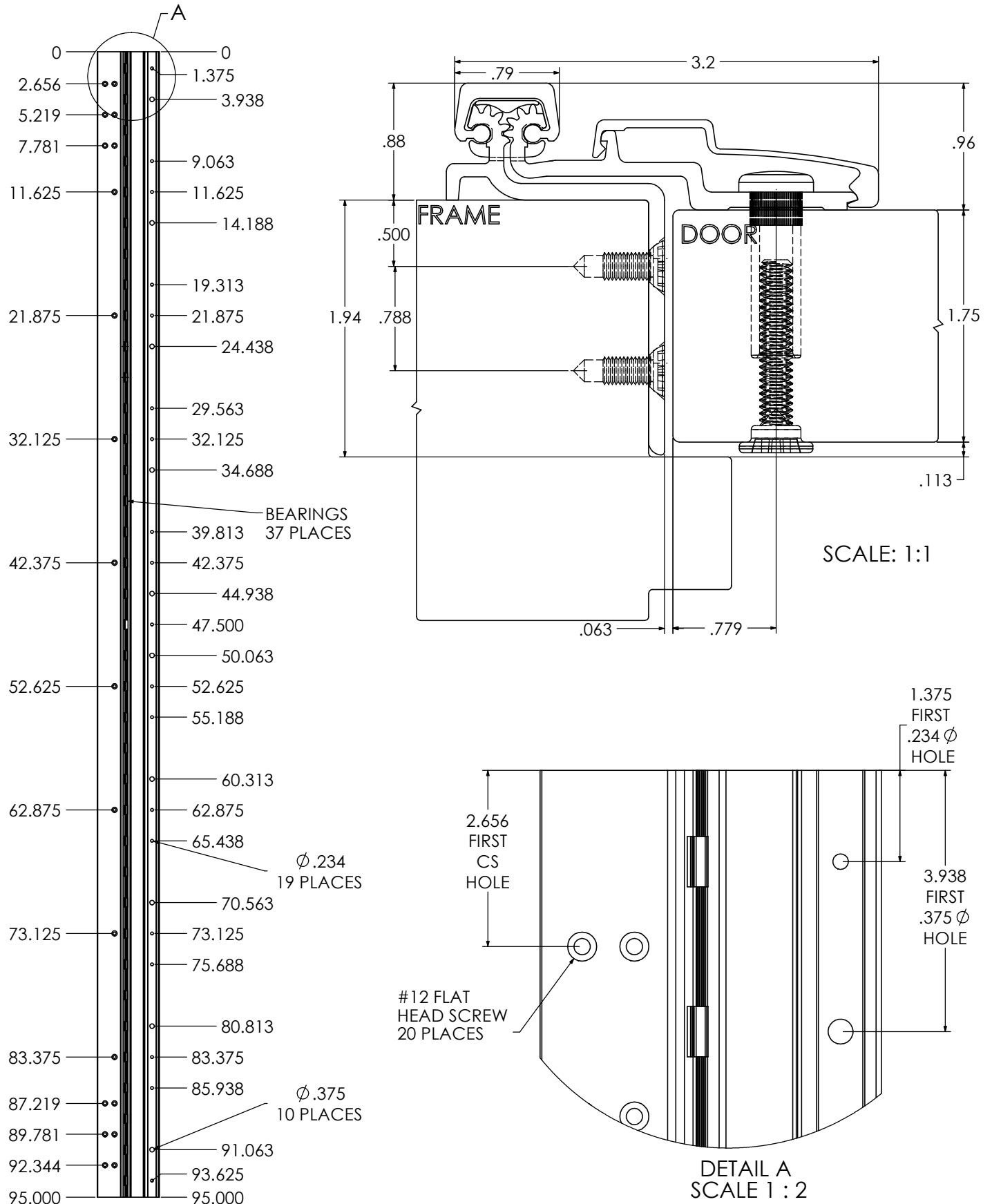
SCALE: 1:1


 DETAIL A
 SCALE 1:2

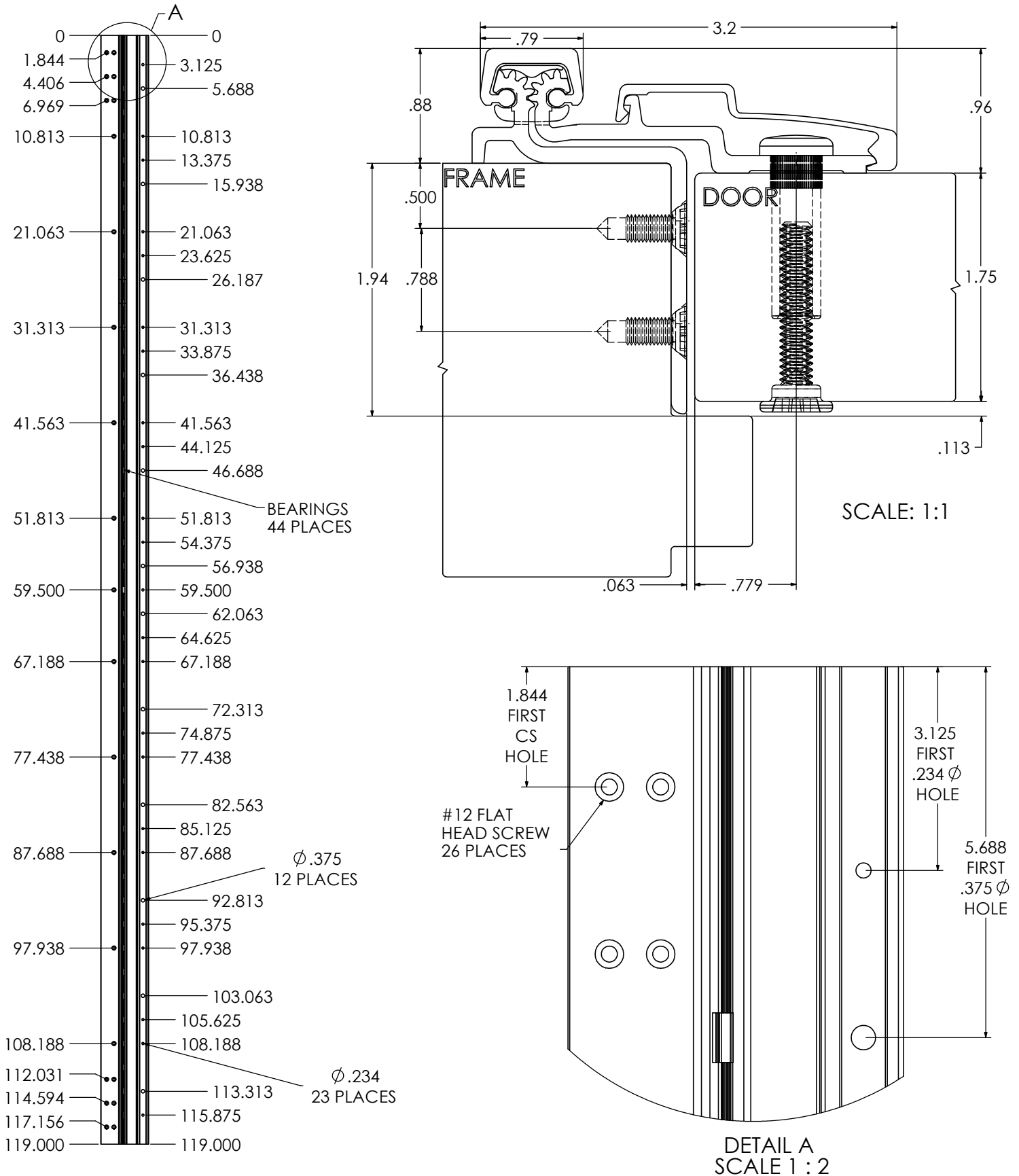
TEMPLATE FOR HALF SURFACE CONTINUOUS GEARED ALUMINUM HINGE

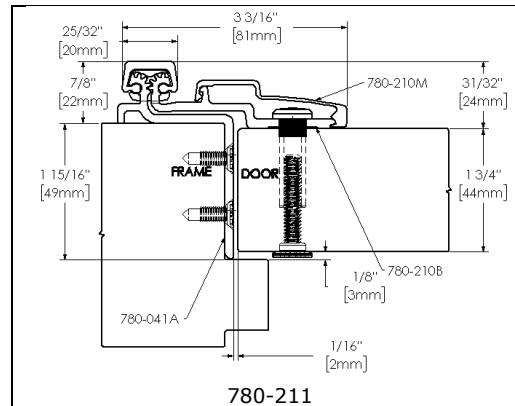


TEMPLATE FOR HALF SURFACE CONTINUOUS GEARED ALUMINUM HINGE



TEMPLATE FOR HALF SURFACE CONTINUOUS GEARED ALUMINUM HINGE





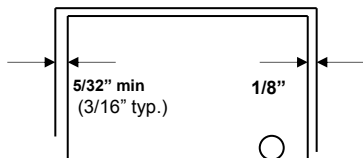
ROTON Model 780-211HD is an Aluminum Continuous Geared Half Surface Hinge that provides a 1/16" door inset. It can be used with any frame or frameless wall without hinge preps, and either with or without reinforcements depending on door weight. The frame rabbet must have a flat surface at least 1-15/16" wide and the frame face must have a flat surface of 1-17/32". Minimum clearance between the hinge edge of the door and the frame is 5/32" (4mm). "HD" models have additional bearings for heavy-duty application.

Hinge Length

All ROTON Hinges are supplied approximately 1" shorter than the nominal door height to avoid threshold or carpet clearance problems. If the hinge must be trimmed shorter, first determine the correct hand of the door and orientation of the hinge. Then mark and trim from the *bottom* of the hinge only – do not cut from the top end.

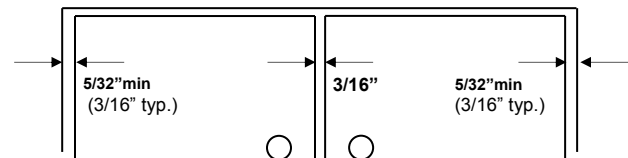
NOM. DOOR HEIGHT	NOM. HINGE LENGTH	NUMBER OF FASTENERS (FRAME / DOOR)
6' 8"	79" (2006mm)	15 / 25
7' 0"	83" (2108mm)	19 / 27
7' 2"	85" (2159mm)	19 / 27
8' 0"	95" (2413mm)	20 / 29
10' 0"	119" (3022mm)	23 / 35

Total Clearance Between Door And Frame Width



SINGLE DOOR

Hinge side clearance (typical)	3/16" (4.7mm)
Latch side clearance (typical)	1/8" (3.2mm)
TOTAL	5/16" (7.9mm)



PAIR OF DOORS

First hinge side clearance (typical)	3/16" (4.7mm)
Clearance between doors (typical)	3/16" (4.7mm)
Second hinge side clearance (typical)	3/16" (4.7mm)
TOTAL	9/16" (14.1mm)

General Fitting Procedure

- For new construction with metal doors/frames:** To accommodate the proper clearance between the door and frame, order the door undersized or the frame header oversized. See the clearance information above to attain the proper size. A minimum clearance of 5/32" (4.0mm) is required between the hinge edge of the door and the frame rabbet. Mortar guards, either Styrofoam or wood, are recommended for frames to prevent grout from interfering with the installation of the hinge fasteners.
- For new site-hung wood doors:** If necessary, scribe and cut from the *latch edge* of the door to leave sufficient hinge stile thickness for proper fastening. See the clearance information above to attain the proper finished width of the door. A minimum clearance of 5/32" (4.0mm) is required between the hinge edge of the door and the frame rabbet.
- For remodeling with existing wood or laminate doors:** If necessary, scribe and cut from the *hinge edge* of the door and plane smooth. See the clearance information above to attain the proper finished width of the door. A minimum clearance of 5/32" (4.0mm) is required between the hinge edge of the door and the frame.

Installation Procedure

Frame Preparation (See Fig. 1)

1. With the hinge open, place the hinge frame leaf against the frame rabbet making certain that both faces of the hinge are flush against the frame face along its entire length. Position the top of the hinge $1/16"$ ($1/8"$ maximum) below the header. **Note: A $1/16"$ shim is recommended due to initial settling of the bearings.**
2. Rotate the door hinge leaf out of the way, to make it accessible to mark and center punch the screw hole locations. *Accurate location is important for proper installation.*
3. For metal frames 12 gage or less ($\leq .110"/2.8\text{mm}$), it is not necessary to pre-drill pilot holes if using the self-drilling screws provided. For metal frames larger than 12 gage ($> .110"/2.8\text{mm}$), drill and tap all mounting holes for #12-24 threads prior to installing the screws. For wood frames, pre-drill pilot holes using a #18 ($.170"/4.3\text{mm}$) bit for optional #12 wood screws.
4. Attach the hinge to the frame. For metal frames, use the #12 self-drilling screws provided (recommended driver speed 1,900-2,500 RPM). For wood frames, use optional #12 wood screws.

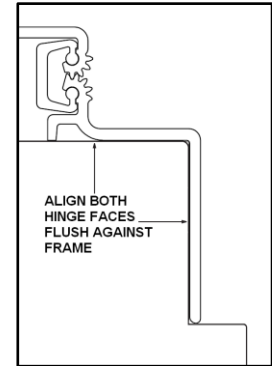


Fig. 1

Door Preparation

1. Rotate the hinge leaf out of the way and set the door into the frame, using shims or wedges to adjust for the desired clearance on all sides.
2. Allow an additional $1/32"$ of clearance on the latch edge of the door at the top only. This will allow for any settling or twisting of the frame that may occur after the shims are removed and the weight of the door is transferred entirely to the frame.
3. Allow $1/16"$ clearance between the top of the door and the frame header rabbet. A good method for this is to use a $1/16"$ thick shim placed over the top edge of the door.
4. With the door held securely in place, rotate the hinge leaf into position on the face of the door.
5. (Standard sexbolt mounting) - Mark and center punch the locations of the larger $3/8"$ diameter holes. *Accurate location is important for proper installation.* Rotate the hinge leaf back out of the way. At each mark, drill a hole completely through the door using a $3/8"$ (9.5mm) bit.
(Optional mounting without sexbolts) - Mark and center punch the locations of the smaller $15/64"$ diameter holes. For metal doors, use optional #12 self-drilling screws. For wood doors, pre-drill pilot holes using a #18 ($.170"/4.5\text{mm}$) bit for optional #12 wood screws.

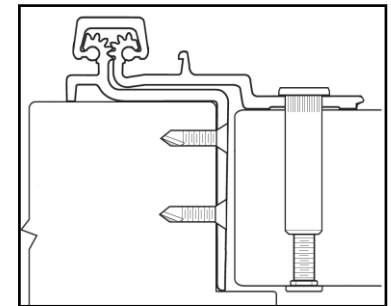


Fig. 2

Hanging the Door (See Fig. 2)

1. Attach the hinge to the door as shown. Sexbolts may be reversed if additional security is needed on the push face of the door, but once the molding is in place reversed sexbolts cannot be accessed for maintenance or removal.
2. Remove all shims and wedges and make a gentle trial swing. Carefully check the door for proper swing and clearance.

Install the Snap-On Molding (See Fig. 3)

1. For the door leaf - Locate and loosen the retaining setscrew on the edge of the molding with the $5/64"$ hex key provided. Hook the thicker leg of the molding under the outside edge of the door leaf along the full length of the hinge. Starting at the top and working downward, press or gently tap the opposite leg of the molding in place (if necessary use a rubber mallet or wood block under a hammer, taking care not to damage the molding). Tighten the retaining setscrew.

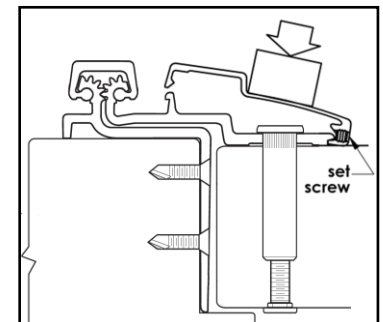
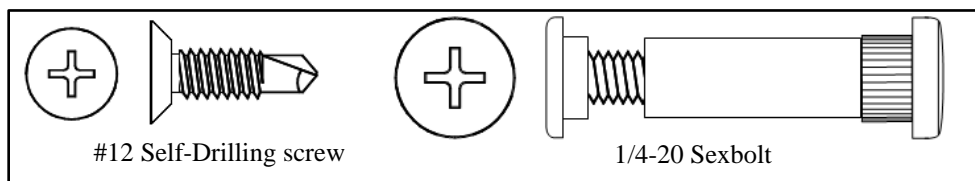
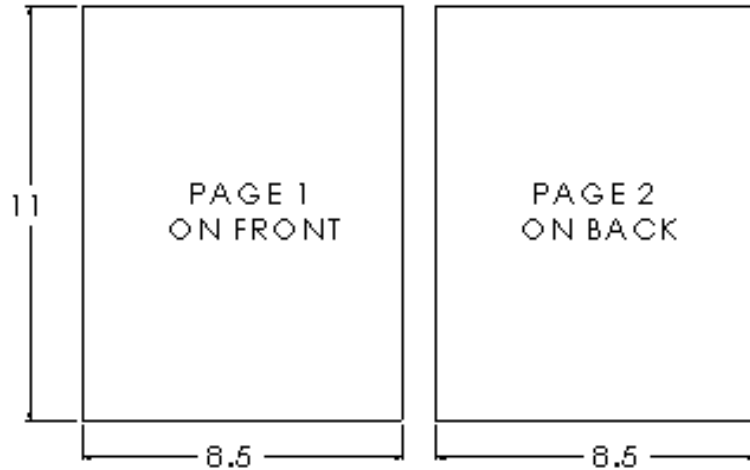


Fig. 3



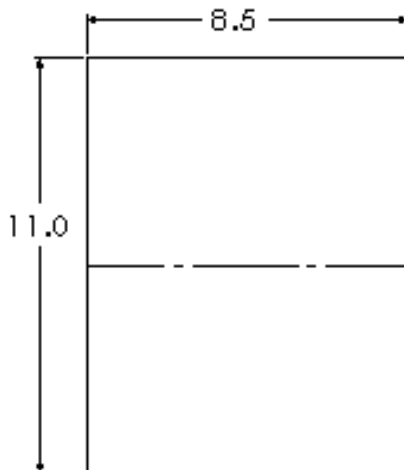
FOLDING INSTRUCTIONS

1. **DO NOT USE THIS DRAWING FOR PRINTING** - USE INSTRUCTION FILE.
2. SINGLE SHEET (20# WEIGHT), DOUBLE-SIDED PRINTING ON 8-1/2" X 11"
3. FOLD SHEET AS SHOWN IN DETAIL "A", FOLDING INSTRUCTIONS

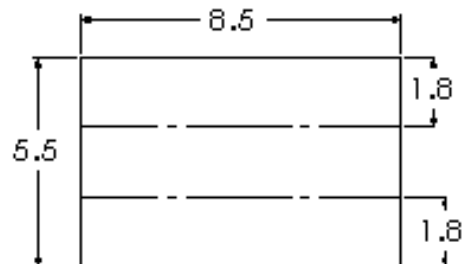


DETAIL "A" FOLDING INSTRUCTIONS

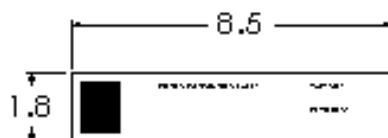
1. FOLD SHEET IN HALF ALONG WIDTH



2. FOLD INTO THIRDS

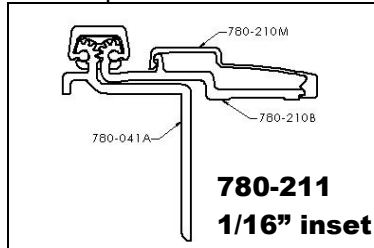


3. FOLDED SHEET WITH HAGER LOGO & REVISION DATE ON OUTSIDE



OTON Hinge U.L. Fire-Rated Studs – 780-211

These instructions outline how to install the optional stainless steel studs (4) for ROTON Hinge model 780-211. All four studs must be used in order to comply with U.L. requirements for composite wood fire doors rated up to 90 minutes and metal fire doors rated up to 3 hours.



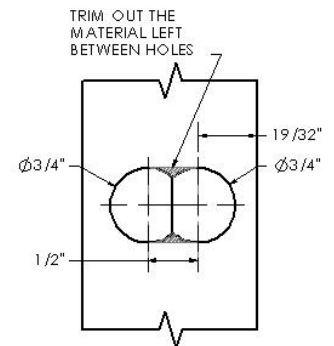
Materials Needed

- Stainless steel studs (4).
- Drill, 3/4" diameter bit, #16 (.177") bit, 12-24 thread tap.
- #10 spanner screwdriver.

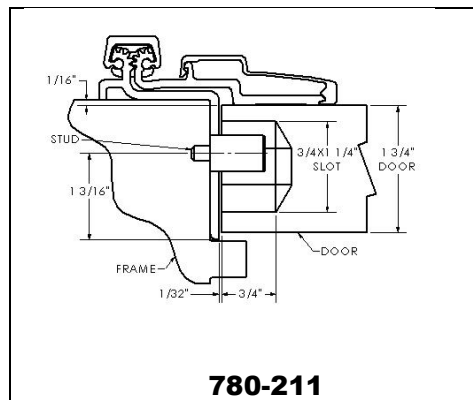
Installation

1. Install the hinge in accordance with the standard installation instructions furnished with the hinge.
2. On the frame leaf, drill and tap 12-24 in the center of the four (4) pre-drilled 3/4" holes.
3. The door has to have 4 horizontal slots (3/4 x 1-1/4") along the edge of the door. For the vertical slot location see the chart below. The first measurement is from the top of the hinge to the centerline of hole #1. The second, third and fourth holes are measured from centerline to centerline.

Vertical Location	79"	83"	85"	95"	119"
Hole #1	13-7/8"	15-7/8"	16-7/8"	16-3/4"	13-3/8"
Hole #2	10-1/4"	10-1/4"	10-1/4"	20-1/2"	30-3/4"
Hole #3	30-3/4"	30-3/4"	30-3/4"	20-1/2"	30-3/4"
Hole #4	10-1/4"	10-1/4"	10-1/4"	20-1/2"	30-3/4"



4. The horizontal location is 19/32" from the face of the door. The 3/4" diameter hole needs to be 3/4" deep. Then drill another hole 1/2" horizontally from that hole to create a 1-1/4" slot. Trim out the material left between each horizontal holes (see illustration) to create the slot.
5. Insert a stud into each of the four #12-24 threaded holes on the frame and tighten securely using a #10 spanner screwdriver.
6. Close the door slowly to assure that the studs are properly aligned. Any minor interference can be corrected using a rat-tail file.



780-211