

SARGENT®

ASSA ABLOY

2900 Series Parts Manual



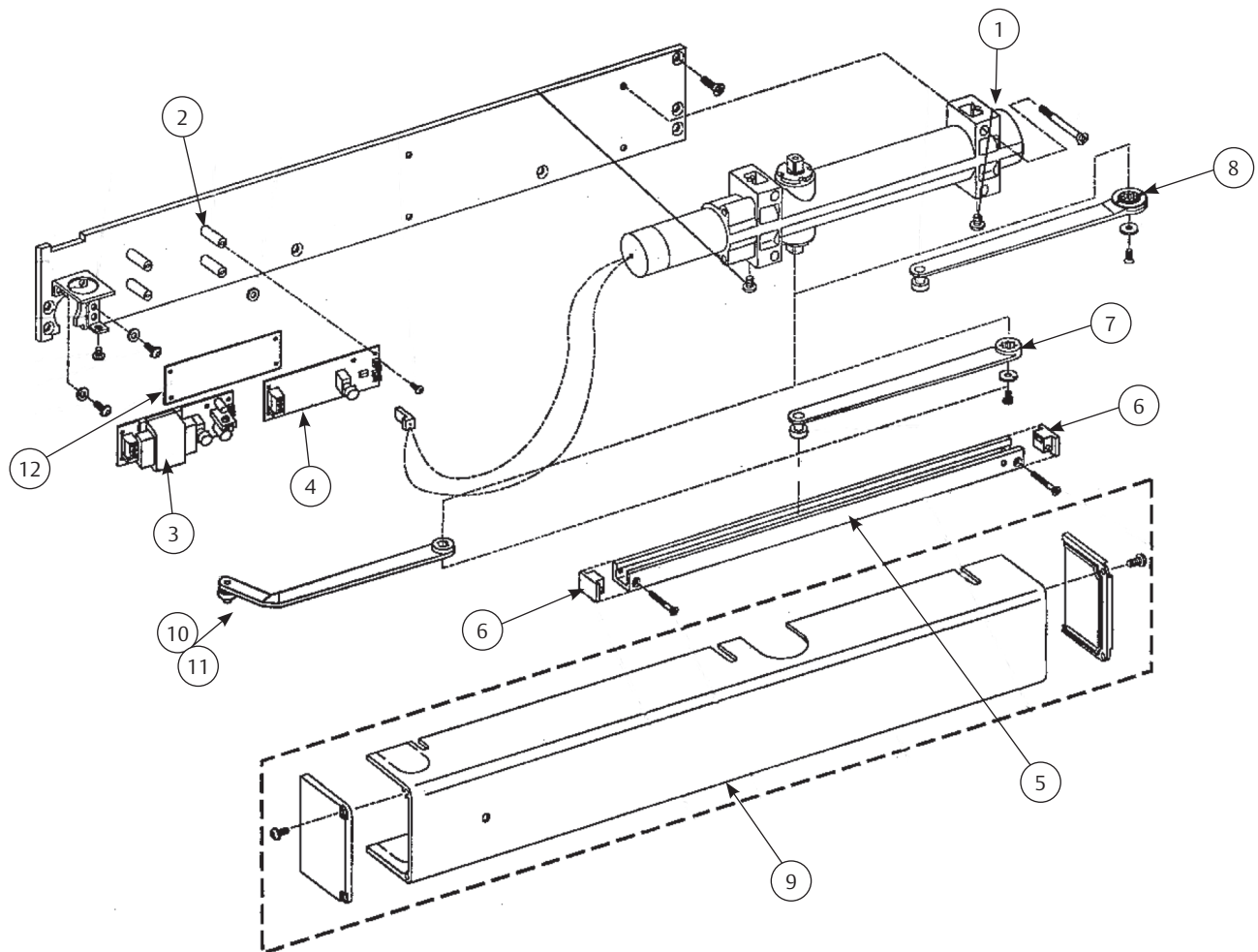
For assistance, contact SARGENT at
800-727-5477 or www.sargentlock.com

<p>⚠ WARNING This product can expose you to lead which is known to the state of California to cause cancer and birth defects or other reproductive harm. For more information go to www.P65warnings.ca.gov.</p>
08/2018

2960, 2970, 2980..... 3
2991, 2992, 2993, 2994, 2995..... 4
80-Prefix Hold Open By-Pass Switch..... 5

Item	Part No.	Description
1	63-3719	Closer body assembly
2	63-0228	Mounting post
3	63-4215	Circuit board (120 VAC)
4	63-4216	Circuit board (24 VAC/DC)
5	63-0156*	Channel package
6	63-0682*	End cap package
7	63-3688*	Rigid arm assembly (2960)
8	63-3689*	Swing-free arm assembly (2980)
9	63-3717*	Cover assembly
10	63-3653*	Double egress arm assy. LH (2970)
11	63-3654*	Double egress arm assy. RH (2970)
12	63-0303	Barrier
	63-3700*	Screw pack

*Finish required (Finishes: EB, ED, EN, EP, EAB)



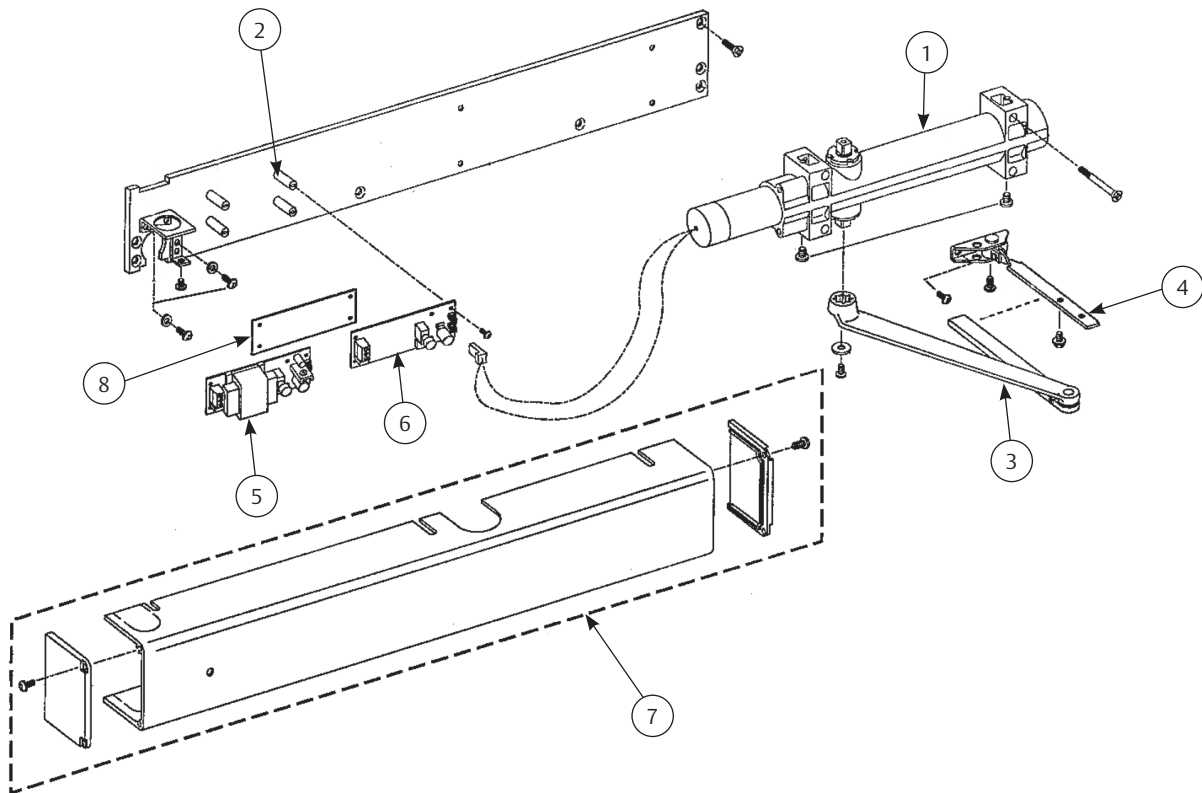
The warranty on SARGENT® products becomes void if the product is modified in any way, regardless of whether the modification causes or contributes to any alleged defect. If a SARGENT product is modified it may no longer meet industry certification and quality control standards applicable to the original product and is no longer a genuine SARGENT product.

Copyright © 2022 Sargent Manufacturing Company, an ASSA ABLOY Group company. All rights reserved. Reproduction in whole or in part without the express written permission of Sargent Manufacturing Company is prohibited.

2900 Fire Guard
2991, 2992, 2993, 2994, 2995

Item	Part No.	Description
1	63-3719	Closer body assembly
2	63-0228	Mounting post
3	63-2607*	Main arm & link assembly (2991, 2992, 2993)
	63-3314*	Arm assembly (2994)
	63-3315*	Arm assembly (2995)
4	63-2216*	Foot assembly (2991)
	63-2217*	Foot assembly (2992)
	63-2218*	Foot assembly (2993)
5	63-4215	Circuit board (120 VAC)
6	63-4216	Circuit board (24 VAC/DC)
7	63-3717*	Cover assembly
8	63-0303	Barrier
	63-3899*	Screw Pack

*Finish required (Finishes: EB, ED, EN, EP, EAB)



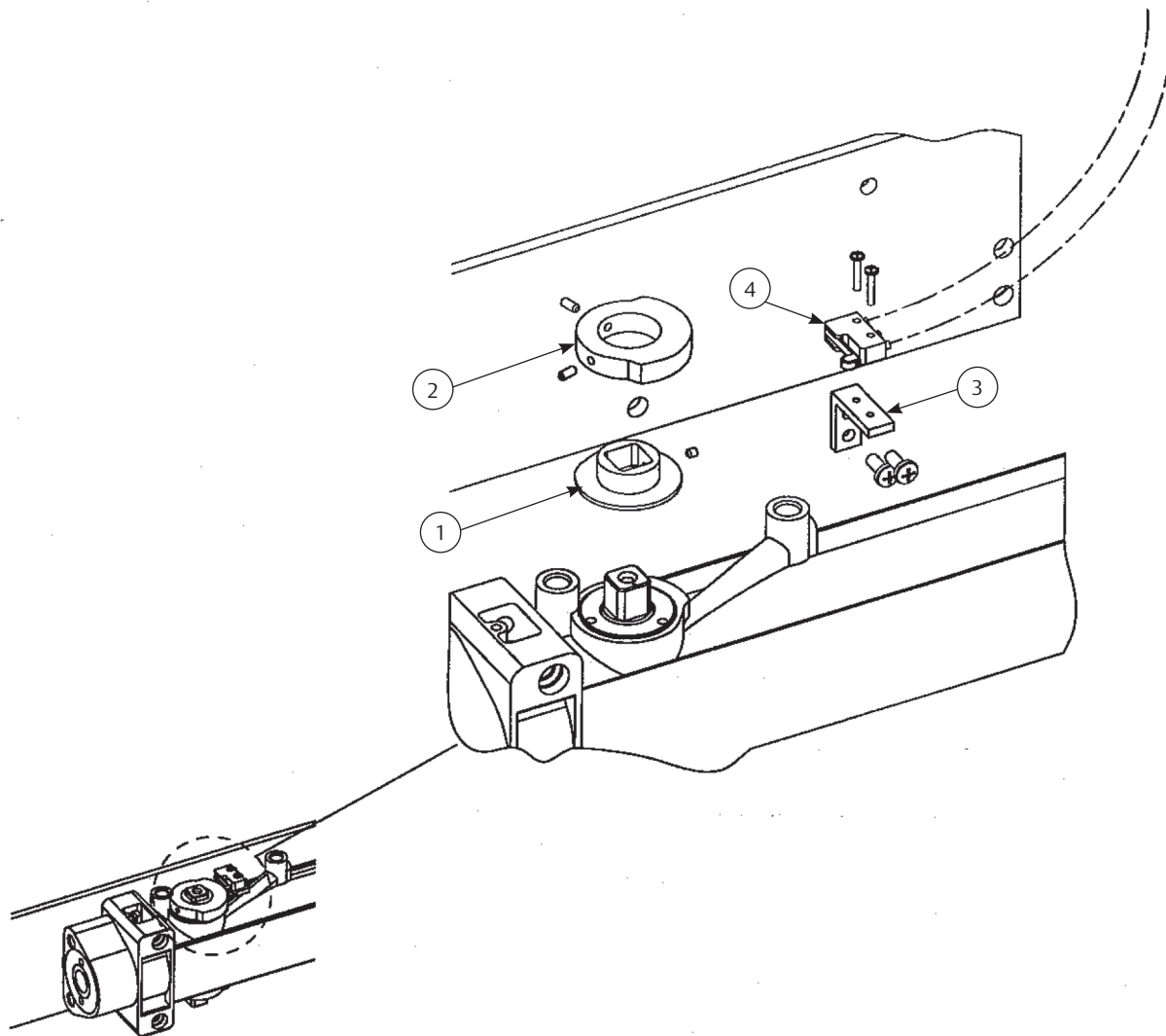
90903-A 02/22

The warranty on SARGENT® products becomes void if the product is modified in any way, regardless of whether the modification causes or contributes to any alleged defect. If a SARGENT product is modified it may no longer meet industry certification and quality control standards applicable to the original product and is no longer a genuine SARGENT product.

Copyright © 2022 Sargent Manufacturing Company, an ASSA ABLOY Group company. All rights reserved. Reproduction in whole or in part without the express written permission of Sargent Manufacturing Company is prohibited.

80-Prefix Hold Open By-Pass Switch
(Available on 2960, 2970 and 2990 Series)

Item	Part No.	Description
1		Cam positioner
2		Cam
3		Switch bracket
4	63-3226	Cam switch & wire assembly package
	63-3787	Kit includes (1, 2, 3, 4)



The ASSA ABLOY Group is the global leader in access solutions. Every day, we help billions of people experience a more open world.

ASSA ABLOY Opening Solutions leads the development within door openings and products for access solutions in homes, businesses and institutions. Our offering includes doors, frames, door and window hardware, mechanical and smart locks. access control and service.



SARGENT Manufacturing Company
100 Sargent Drive
New Haven, CT 06511 USA
800-727-5477
www.sargentlock.com

Founded in the early 1800s, SARGENT® is a market leader in locksets, cylinders, door closers, exit devices, electro-mechanical products and access control systems for new construction, renovation, and replacement applications. The company's customer base includes commercial construction, institutional, and industrial markets.

Copyright © 2022, Sargent Manufacturing Company, an ASSA ABLOY Group company. All rights reserved. Reproduction in whole or in part without the express written permission of Sargent Manufacturing Company is prohibited. Patent pending and/or patent www.assaabloyds.com/patents.

90903:A 02/22