

SCRM4550

Special Double-Lipped Strike & Rescue Stop Combo Center Hung for Mortise Lock (With Dead Bolt)

Innovation, Quality,
Customer Service...

The sizing chart on the right lists custom layout numbers for all frame sizes from 5- $\frac{1}{4}$ " to 9" for:

- Center hung door
- Mortise lock application (with dead bolt)

ABH has the capability to custom manufacture thousands of different custom double-lipped strike and rescue stop combos to fit nearly every application.

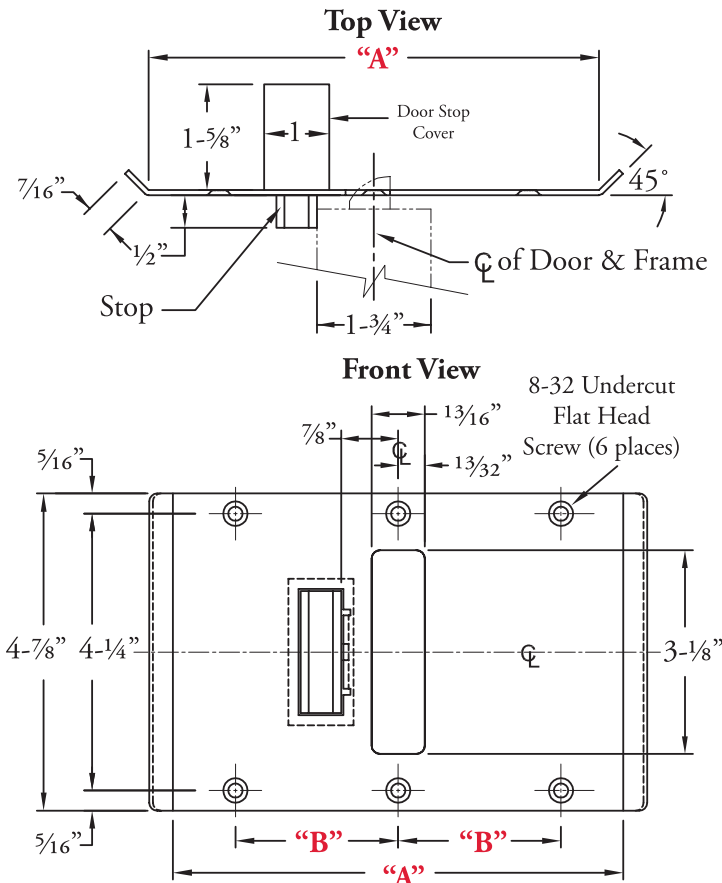
Please contact us if you need to match existing preps or if additional customizations are required and we will gladly assist.

How to Order

Example SCRM4550 x US32D x SP-CR628

Part Number	Finish	Custom Layout Number	Quantity
SCRM4550			

Please specify mortise lock body manufacturer when placing order.



Custom Layout Number	Frame Size	Center to Center Mounting Holes
	"A"	"B"
SP-CR628	5- $\frac{1}{4}$ "	1- $\frac{7}{8}$ "
SP-CR629	5- $\frac{3}{8}$ "	1- $\frac{7}{8}$ "
SP-CR630	5- $\frac{1}{2}$ "	1- $\frac{7}{8}$ "
SP-CR631	5- $\frac{5}{8}$ "	1- $\frac{7}{8}$ "
SP-CR632	5- $\frac{3}{4}$ "	1- $\frac{7}{8}$ "
SP-CR633	5- $\frac{7}{8}$ "	2- $\frac{3}{8}$ "
SP-CR634	6"	2- $\frac{3}{8}$ "
SP-CR635	6- $\frac{1}{8}$ "	2- $\frac{3}{8}$ "
SP-CR636	6- $\frac{1}{4}$ "	2- $\frac{3}{8}$ "
SP-CR637	6- $\frac{3}{8}$ "	2- $\frac{3}{8}$ "
SP-CR638	6- $\frac{1}{2}$ "	2- $\frac{3}{8}$ "
SP-CR639	6- $\frac{5}{8}$ "	2- $\frac{3}{8}$ "
SP-CR640	6- $\frac{3}{4}$ "	2- $\frac{3}{8}$ "
SP-CR641	6- $\frac{7}{8}$ "	2- $\frac{3}{8}$ "
SP-CR642	7"	2- $\frac{3}{8}$ "
SP-CR643	7- $\frac{1}{8}$ "	2- $\frac{3}{8}$ "
SP-CR644	7- $\frac{1}{4}$ "	2- $\frac{3}{8}$ "
SP-CR645	7- $\frac{3}{8}$ "	2- $\frac{3}{8}$ "
SP-CR646	7- $\frac{1}{2}$ "	2- $\frac{3}{8}$ "
SP-CR647	7- $\frac{5}{8}$ "	2- $\frac{3}{8}$ "
SP-CR648	7- $\frac{3}{4}$ "	2- $\frac{3}{8}$ "
SP-CR649	7- $\frac{7}{8}$ "	2- $\frac{7}{8}$ "
SP-CR650	8"	2- $\frac{7}{8}$ "
SP-CR651	8- $\frac{1}{8}$ "	2- $\frac{7}{8}$ "
SP-CR652	8- $\frac{1}{4}$ "	2- $\frac{7}{8}$ "
SP-CR653	8- $\frac{3}{8}$ "	2- $\frac{7}{8}$ "
SP-CR654	8- $\frac{1}{2}$ "	2- $\frac{7}{8}$ "
SP-CR655	8- $\frac{5}{8}$ "	2- $\frac{7}{8}$ "
SP-CR656	8- $\frac{3}{4}$ "	2- $\frac{7}{8}$ "
SP-CR657	8- $\frac{7}{8}$ "	2- $\frac{7}{8}$ "
SP-CR658	9"	2- $\frac{7}{8}$ "

