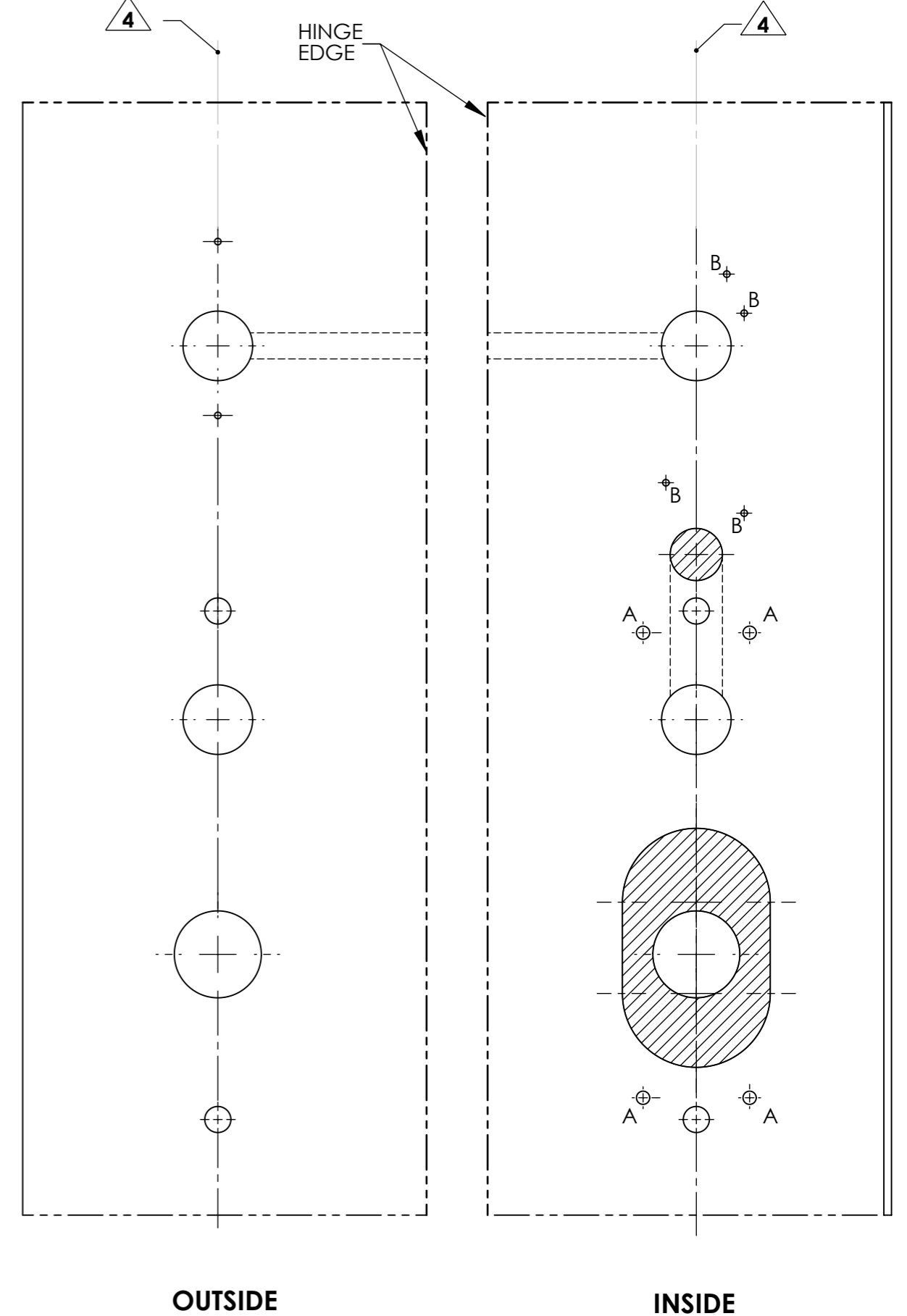
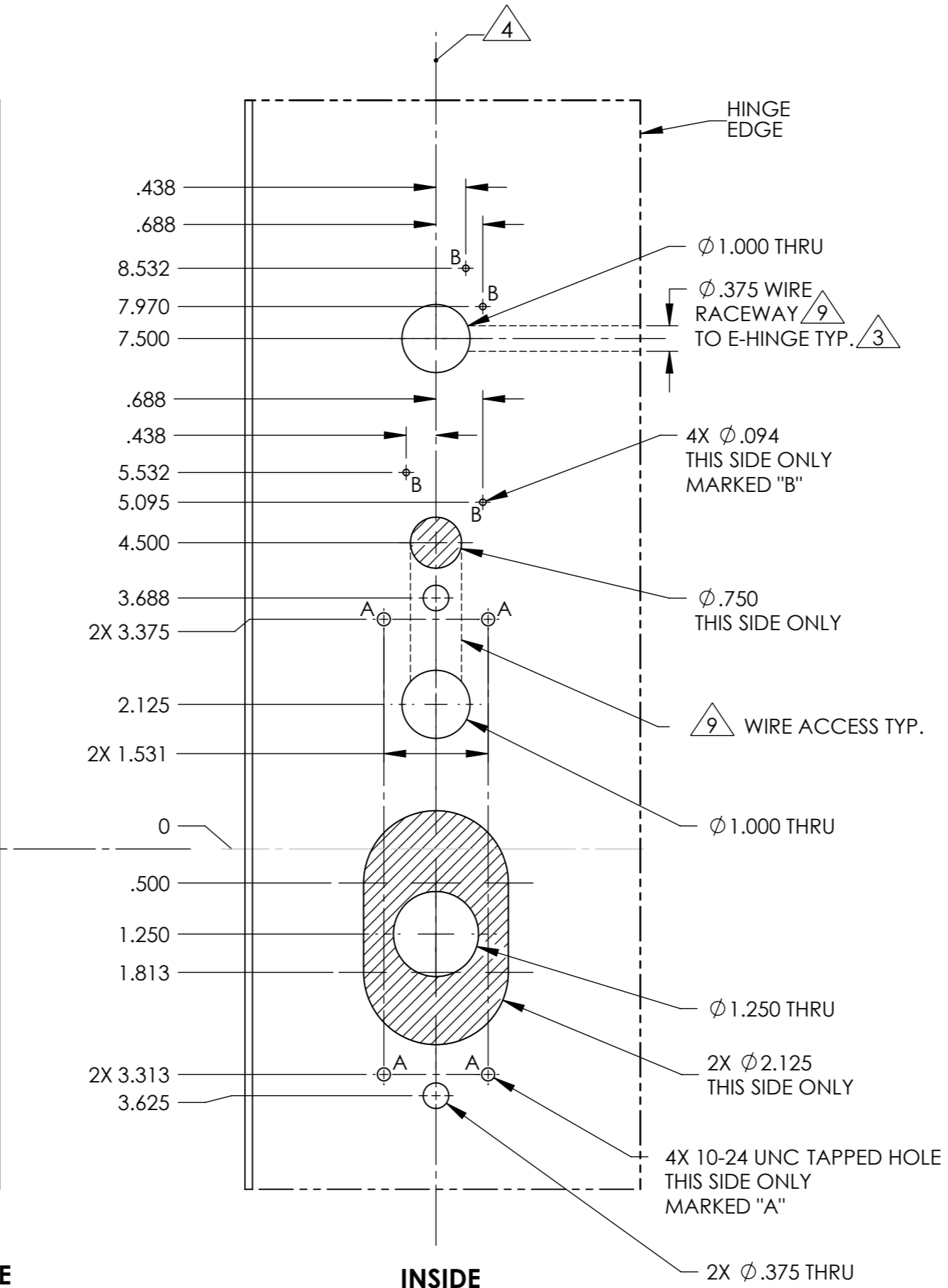
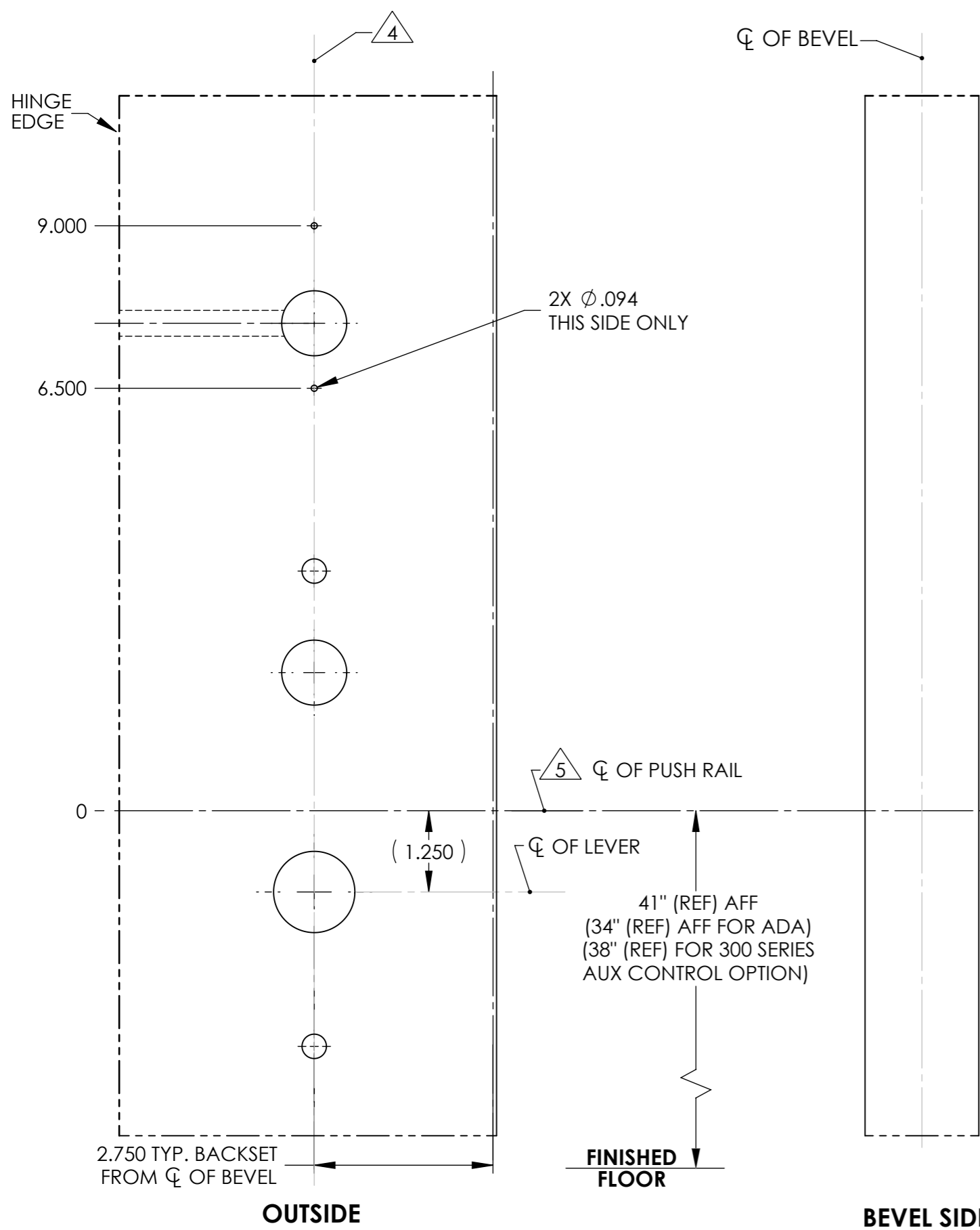


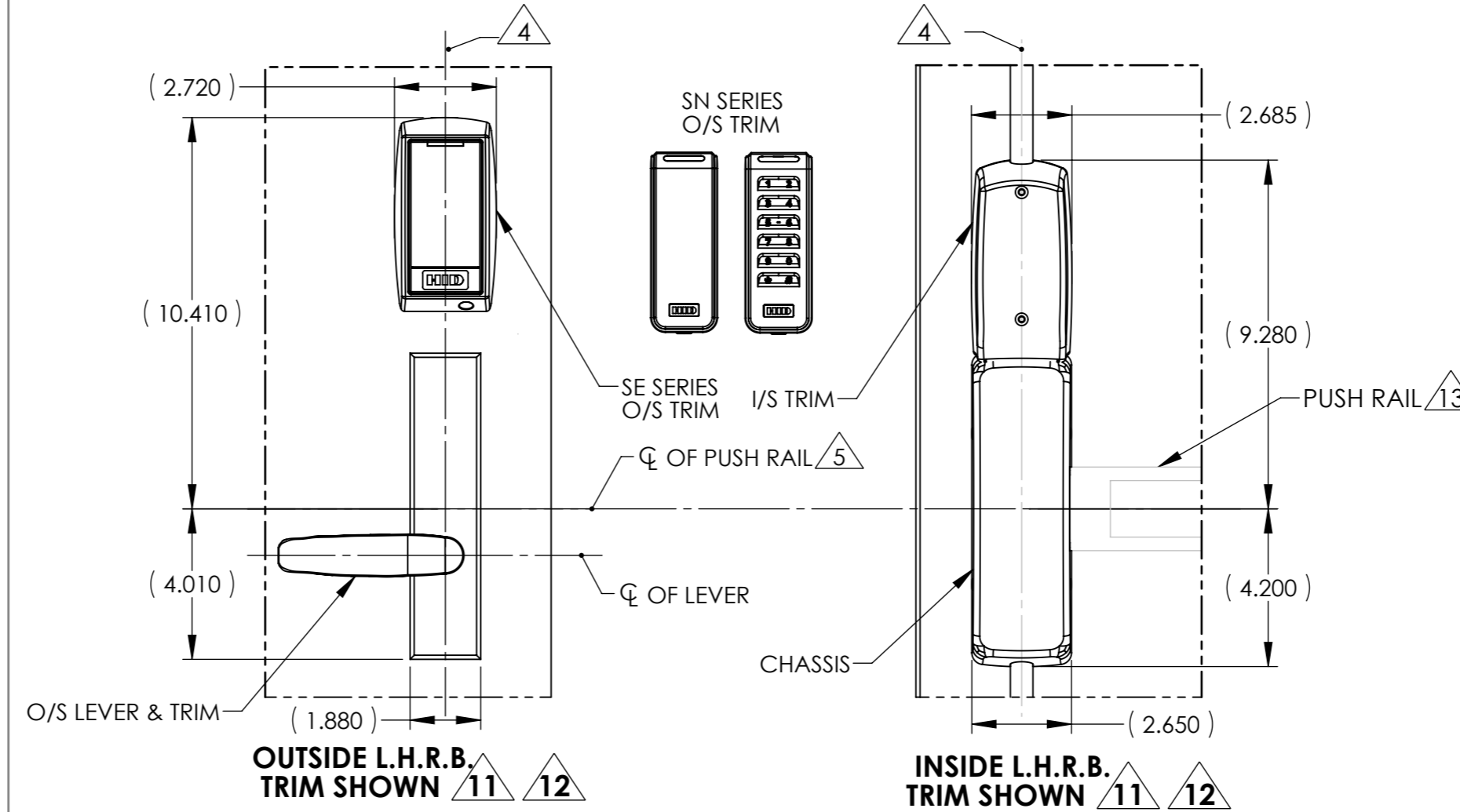
METAL DOOR



L.H.R.B. DOOR

R.H.R.B. DOOR

- NOTES:
- DRAWING IS NOT TO SCALE.
 - REFERENCE STRIKE TEMPLATE FOR DETAILS TO PREPARE FRAME.
 - FOR ELECTROLYNX APPLICATIONS, REFER TO MCKINNEY TRANSFER DEVICE CATALOG.
 - VERTICAL CENTERLINE IS REFERENCED FROM THE CENTERLINE OF THE BEVEL. (INDUSTRY STANDARD BEVEL IS 1/8 INCH IN 2 INCHES.) CONSULT THE AUTHORITY HAVING JURISDICTION (AHJ) TO VERIFY THE RECOMMENDED MOUNTING HEIGHT ABOVE THE FINISHED FLOOR (AFF). (34" (REF) AFF FOR ADA) (38" (REF) FOR 300 SERIES AUX CONTROL OPTION)
 - LIMITATIONS IN THE DOOR CONSTRUCTION PROCESS MAY REQUIRE SOME HOLES TO BE FIELD-LOCATED USING THE PHYSICAL PART AS A TEMPLATE.
 - STANDARD TOLERANCE OF ± .015 APPLIES TO ALL DOOR PREPARATION REQUIREMENTS, UNLESS OTHERWISE SPECIFIED.
 - DOOR REINFORCEMENT IS RECOMMENDED TO IMPROVE (SURFACE MOUNTED) FASTENER HOLDING POWER AND CRUSH RESISTANCE (WHEN THRU-BOLTING IS EMPLOYED). CONSTRUCTION TECHNIQUES SHOULD REFLECT INDUSTRY BEST PRACTICES (I.E. WDMA, SDI) AND AUTHORIZED METHODS WHERE LABEL SERVICE (I.E. UL, W-H) IS IN EFFECT.
 - WIRE RACEWAY AREAS SHALL BE FREE OF OBSTRUCTIONS & SHARP EDGES TO PROTECT WIRES FROM CUTS & ABRASIONS.
 - CAREFULLY NOTE WHICH FEATURES ARE OPTIONAL, (WHETHER THE FEATURE APPLIES TO BOTH SIDES OF THE DOOR AND/OR IF A DEPTH APPLIES.)
 - MAXIMUM PRODUCT DIMENSIONS ARE SHOWN FOR THE PURPOSE OF VERIFYING FITMENT WITH DOOR FRAME STOPS, DOOR STILE SIZE & LIGHT/LOUVER KITS.
 - IF OPTIONAL LEVERS OR ROSES ARE USED REFERENCE THE RELATED PRODUCT DIMENSIONS TO VERIFY THE FITMENT REQUIREMENTS.
 - SEE TEMPLATE 4289 FOR STANDARD SVR LATCH PREP, 4297 FOR 12-SVR LATCH PREP, 4413 FOR TOP & BOTTOM STRIKE PREP, & 4214 FOR AUX. CONTROL PREP (OPTIONAL).
 - FOR GLASS BEADED DOORS, IF GLASS BEAD CANNOT BE REMOVED, USE SHIM KIT (AVAILABLE ON ORDER).
 - CONCEALED DOOR POSITION SWITCH MODEL 3287 IS INCLUDED WITH THIS PRODUCT. SEE SARGENT TEMPLATE A7448B. USE AND INSTALLATION LOCATION TO BE SPECIFIED BY OTHERS.

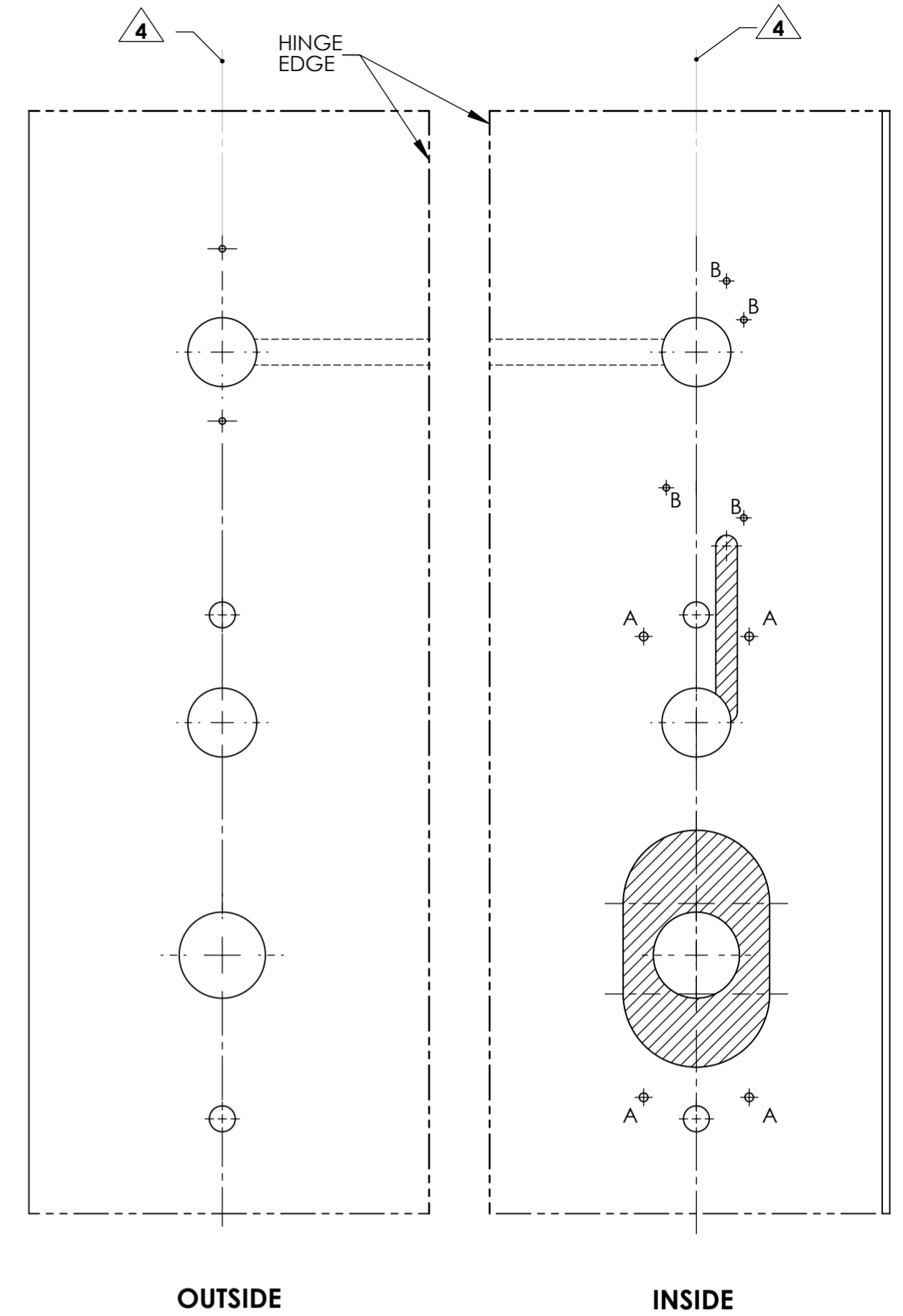
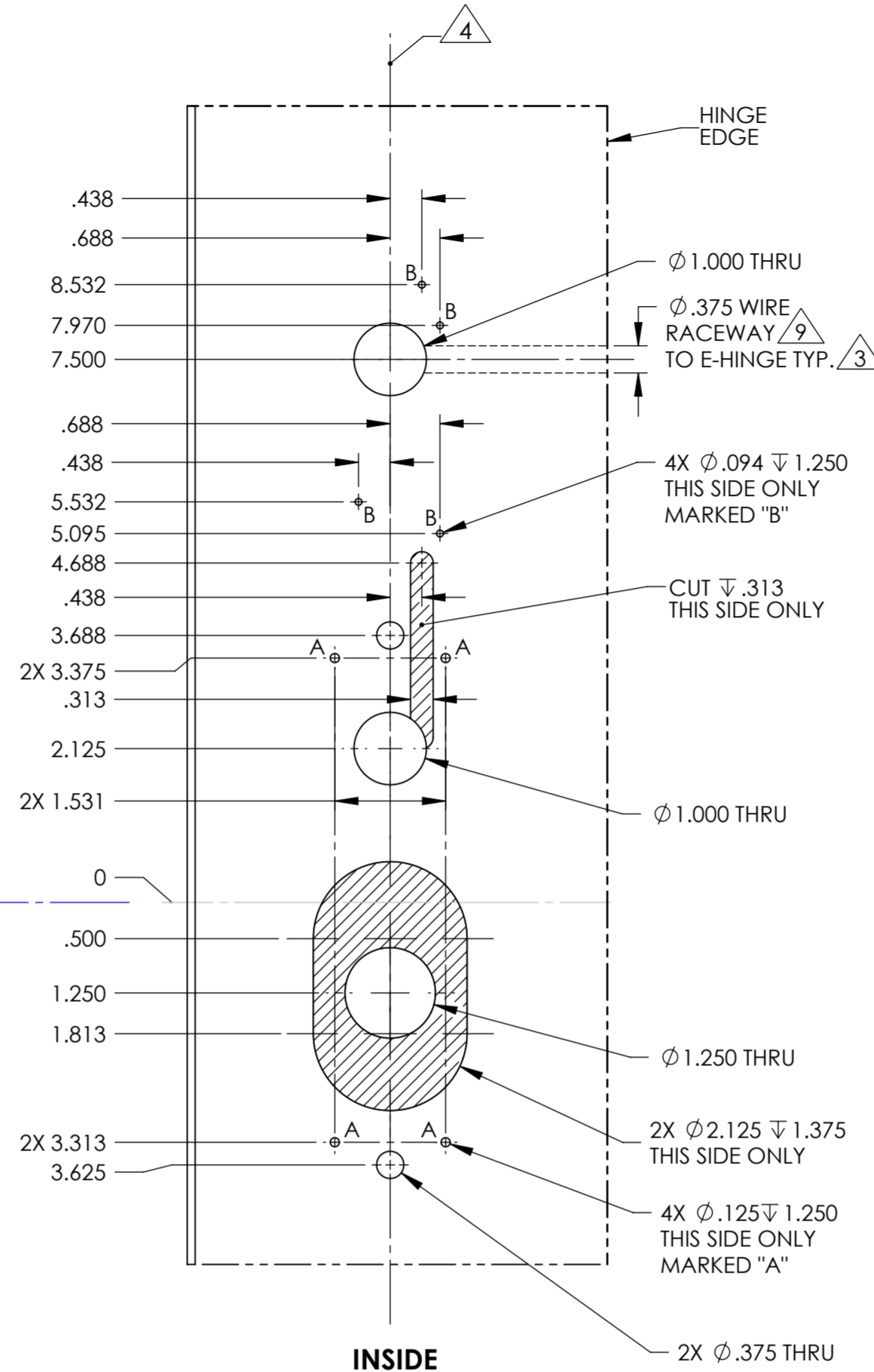
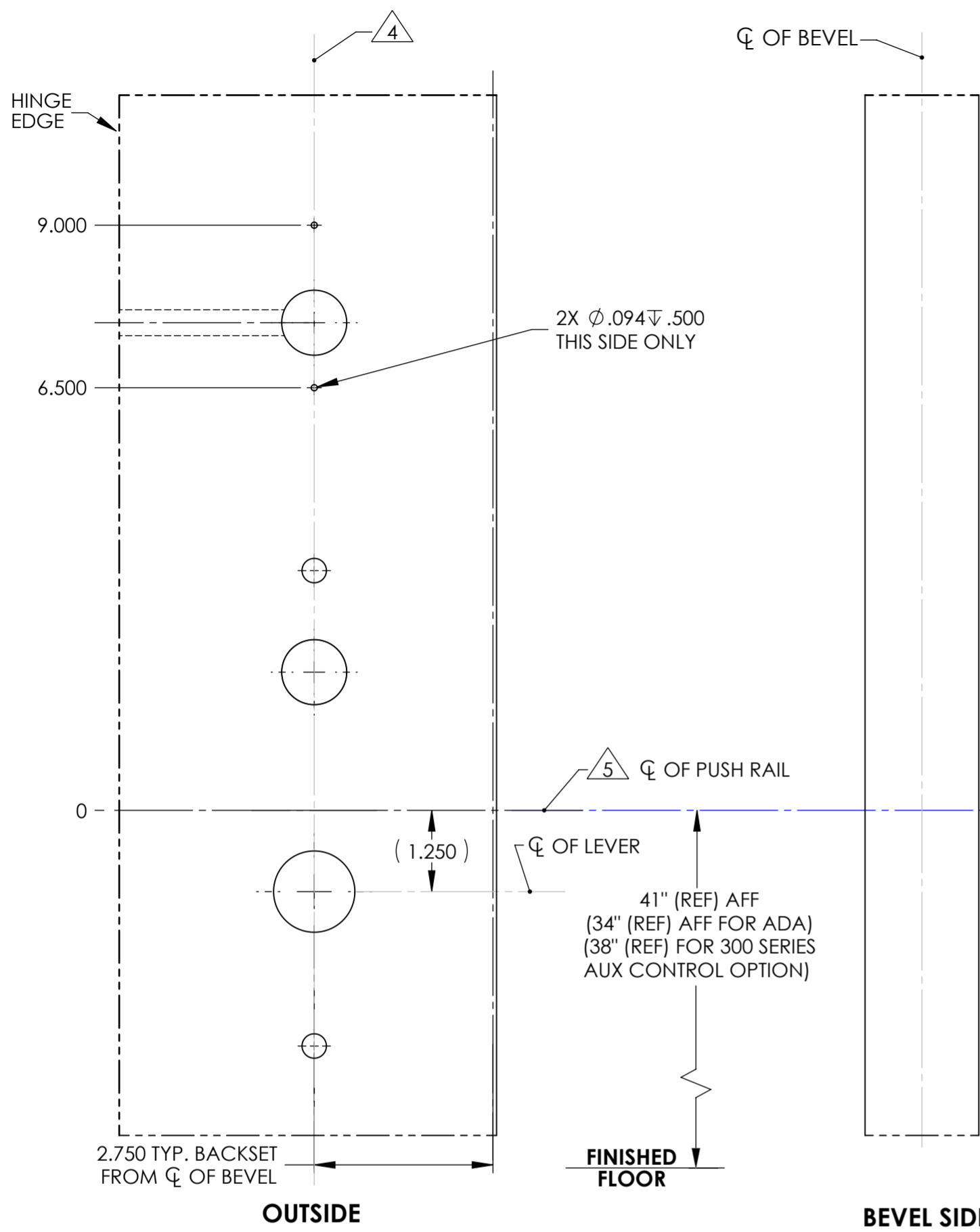


AUTHORIZED PREFIXES
M1, SN200, SN210

BACKSET DEFINITION	DOOR HANDING
BACKSET	L.H. INSIDE R.H.
	OUTSIDE
TOP OF DOOR	INSIDE
VERTICAL CL OF BEVEL	L.H.R.B. OUTSIDE R.H.R.B.

SARGENT ASSA ABLOY	Sargent Manufacturing Company 100 Sargent Drive New Haven, CT 06511
DOOR MANUFACTURERS TEMPLATE: SE, SN SERIES TRIM METAL DOOR 8700 SVR DEVICE	RELEASE DATE OCT 9 2020 TEMPLATE NO. 4705 3
SHEET 1 OF 2	

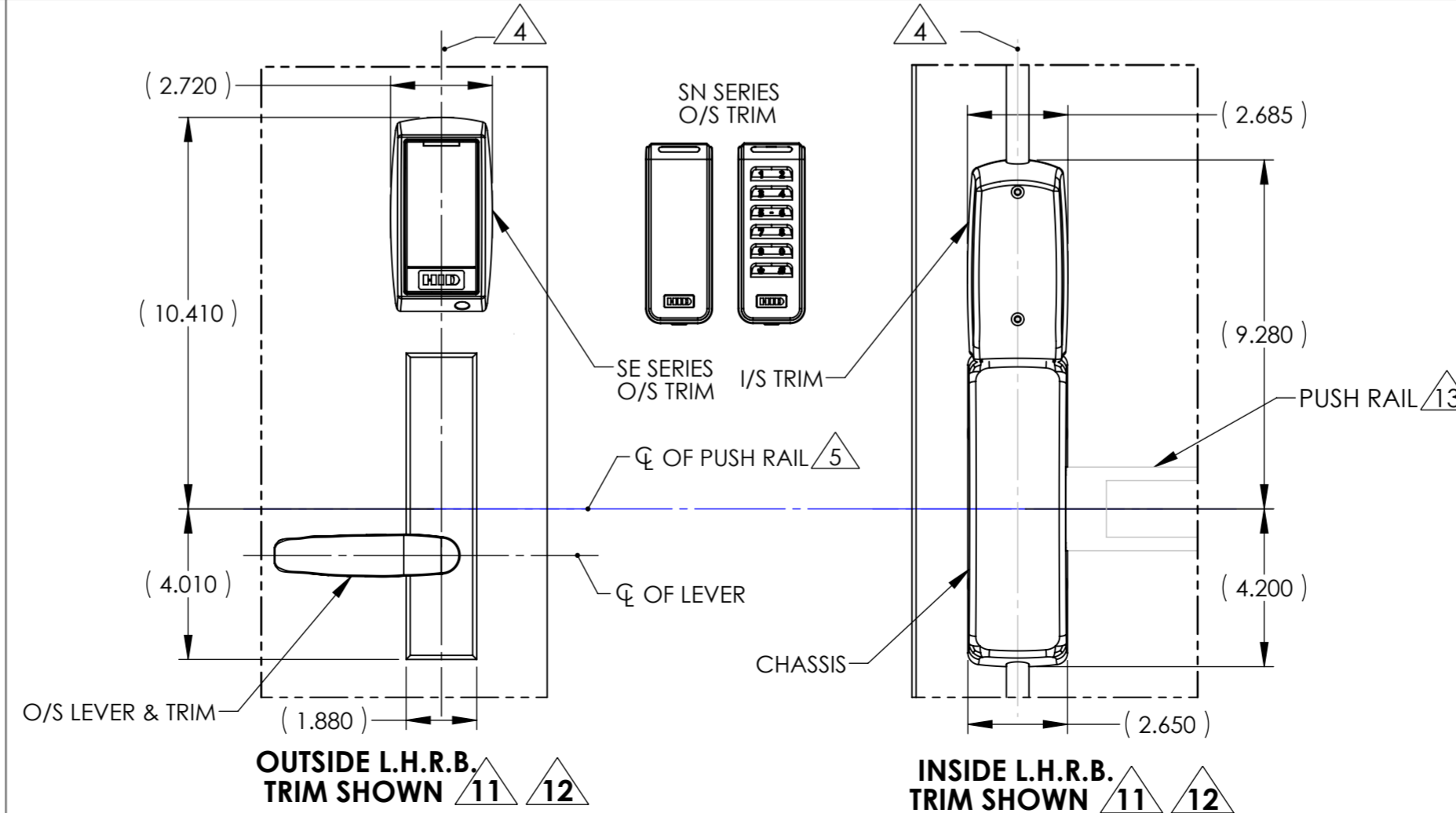
WOOD DOOR



L.H.R.B. DOOR

R.H.R.B. DOOR

- NOTES:
- DRAWING IS NOT TO SCALE.
 - REFERENCE STRIKE TEMPLATE FOR DETAILS TO PREPARE FRAME.
 - FOR ELECTROLYNX APPLICATIONS, REFER TO MCKINNEY TRANSFER DEVICE CATALOG.
 - VERTICAL CENTERLINE IS REFERENCED FROM THE CENTERLINE OF THE BEVEL. (INDUSTRY STANDARD BEVEL IS 1/8 INCH IN 2 INCHES.)
 - CONSULT THE AUTHORITY HAVING JURISDICTION (AHJ) TO VERIFY THE RECOMMENDED MOUNTING HEIGHT ABOVE THE FINISHED FLOOR (AFF). LIMITATIONS IN THE DOOR CONSTRUCTION PROCESS MAY REQUIRE SOME HOLES TO BE FIELD-LOCATED USING THE PHYSICAL PART AS A TEMPLATE.
 - STANDARD TOLERANCE OF $\pm .015$ APPLIES TO ALL DOOR PREPARATION REQUIREMENTS, UNLESS OTHERWISE SPECIFIED.
 - DOOR REINFORCEMENT IS RECOMMENDED TO IMPROVE (SURFACE MOUNTED) FASTENER HOLDING POWER AND CRUSH RESISTANCE (WHEN THRU-BOLTING IS EMPLOYED). CONSTRUCTION TECHNIQUES SHOULD REFLECT INDUSTRY BEST PRACTICES (I.E. WDMA, SDI) AND AUTHORIZED METHODS WHERE LABEL SERVICE (I.E. UL, W-H) IS IN EFFECT.
 - WIRE RACEWAY AREAS SHALL BE FREE OF OBSTRUCTIONS & SHARP EDGES TO PROTECT WIRES FROM CUTS & ABRASIONS.
 - CAREFULLY NOTE WHICH FEATURES ARE OPTIONAL, (WHETHER THE FEATURE APPLIES TO BOTH SIDES OF THE DOOR AND/OR IF A DEPTH APPLIES.)
 - MAXIMUM PRODUCT DIMENSIONS ARE SHOWN FOR THE PURPOSE OF VERIFYING FITMENT WITH DOOR FRAME STOPS, DOOR STILE SIZE & LIGHT/LOUVER KITS.
 - IF OPTIONAL LEVERS OR ROSES ARE USED REFERENCE THE RELATED PRODUCT DIMENSIONS TO VERIFY THE FITMENT REQUIREMENTS.
 - SEE TEMPLATE 4289 FOR STANDARD SVR LATCH PREP, 4297 FOR 12- SVR LATCH PREP, 4413 FOR TOP & BOTTOM STRIKE PREP, & 4214 FOR AUX. CONTROL PREP (OPTIONAL).
 - FOR GLASS BEADED DOORS, IF GLASS BEAD CANNOT BE REMOVED, USE SHIM KIT (AVAILABLE ON ORDER).
 - CONCEALED DOOR POSITION SWITCH MODEL 3287 IS INCLUDED WITH THIS PRODUCT. SEE SARGENT TEMPLATE A7448B. USE AND INSTALLATION LOCATION TO BE SPECIFIED BY OTHERS.



AUTHORIZED PREFIXES
M1, SN200, SN210

BACKSET DEFINITION		DOOR HANDING	
SARGENT ASSA ABLOY DOOR MANUFACTURERS TEMPLATE: SE, SN SERIES TRIM WOOD DOOR 8700 SVR DEVICE		Sargent Manufacturing Company 100 Sargent Drive New Haven, CT 06511 RELEASE DATE OCT 9 2020 TEMPLATE NO. 4705 3	
SHEET 2 OF 2			