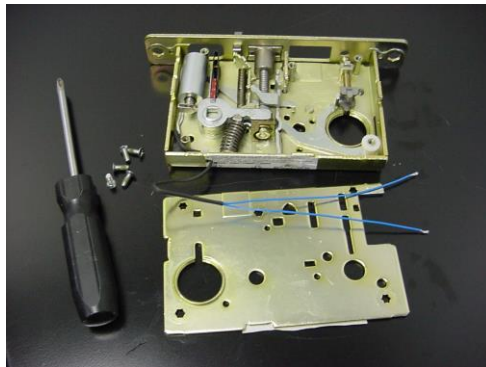


SARGENT 8200 SERIES/YALE 8800 SERIES ELECTRIC LOCK M1510 & M1520 FUNCTION CHANGE INSTRUCTIONS

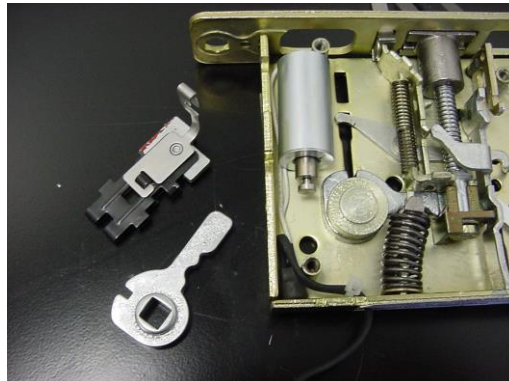
TO CHANGE THE LOCKING FUNCTION FOLLOW THE INSTRUCTIONS BELOW CAREFULLY.



STEP 1: REMOVE 5 EACH COVER SCREWS AND REMOVE COVER.



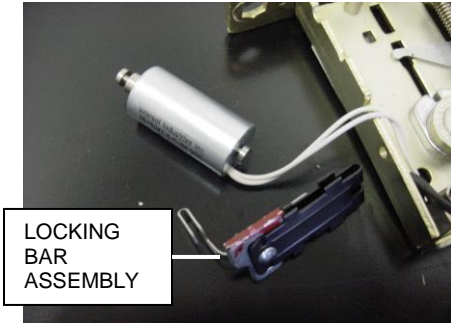
STEP 2: REMOVE TOP LEVER/KNOB HUB AND LOCKING BAR ASSEMBLY.



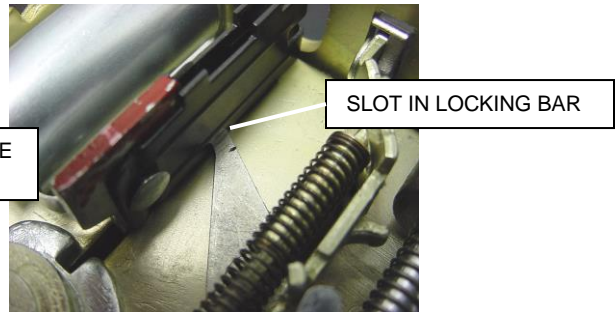
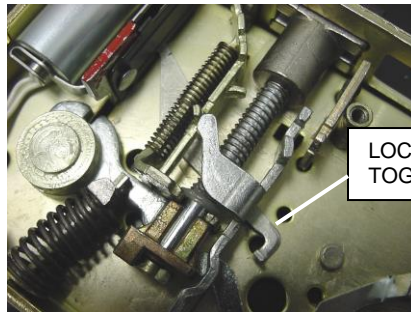
STEP 3: CHANGING THE FUNCTION, FOLLOW THE INSTRUCTIONS BELOW FOR FAIL SAFE OR FAIL SECURE LOCKING.

M1510C (FAIL SAFE) POWER LOCK FUNCTION

FOR FAIL SAFE FUNCTION THE LOCKING BAR ASSEMBLY IS INSTALLED ON THE WIRE ENTRY SIDE OF SOLENOID COIL. SLIDE LOCKING BAR ASSEMBLY UNTO THE SOLENOID WITH THE MAIN PORTION OF THE LOCKING LINK ALONG THE SIDE OF THE SOLENOID BODY.

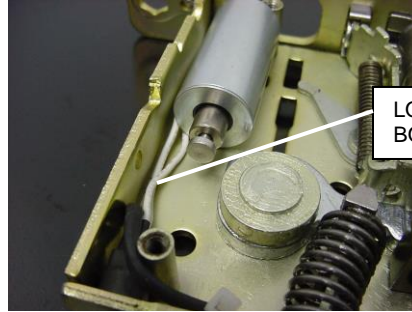


AFTER LOCKING BAR ASSEMBLY HAS BEEN INSTALLED ONTO SOLENOID PLACE THE SOLENOID BACK INTO THE LOCK CASE. THE LOCK CASE TOGGLE NEEDS TO BE POSITIONED IN THE CORRECT SLOT IN LOCKING BAR. MAKE SURE THAT THE WIRES ARE LOCATED ON THE BOTTOM OF THE LOCK CASE SO THAT THEY DO NOT INTERFERE WITH THE SOLENOID AND LINKAGE. FOLD THE EXCESSS WIRE ONTO THE TOP OF THE RECTIFIER IN THE CORNER OF THE LOCK CASE.

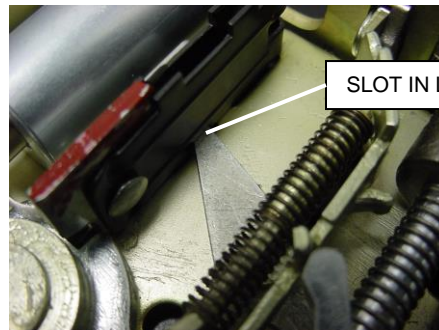


M1520C (FAIL SECURE) POWER UNLOCK FUNCTION

FOR FAIL SECURE FUNCTION THE LOCKING BAR ASSEMBLY IS INSTALLED ONTO THE END OF THE SOLENOID PLUNGER. POSITION THE SOLENOID IN LOCK CASE WITH THE WIRES LOCATED ON THE BOTTOM EDGE BETWEEN THE LOCK CASE AND THE SOLENOID BODY.



INSTALL THE LOCKING BAR ASSEMBLY ONTO THE SOLENOID PLUNGER. THE LOCK CASE TOGGLE NEEDS TO BE POSITIONED IN THE CORRECT SLOT IN LOCKING BAR



STEP 4: PLACE THE TOP LEVER/KNOB HUB ONTO HUB SPACER. THEN INSTALL THE COVER AND SCREWS. CHECK LOCK BY APPLYING THE CORRECT VOLTAGE TO THE SOLENOID MAKING SURE THAT THE LOCKING BAR ENGAGES AND DISENGAGES PROPERLY.

