



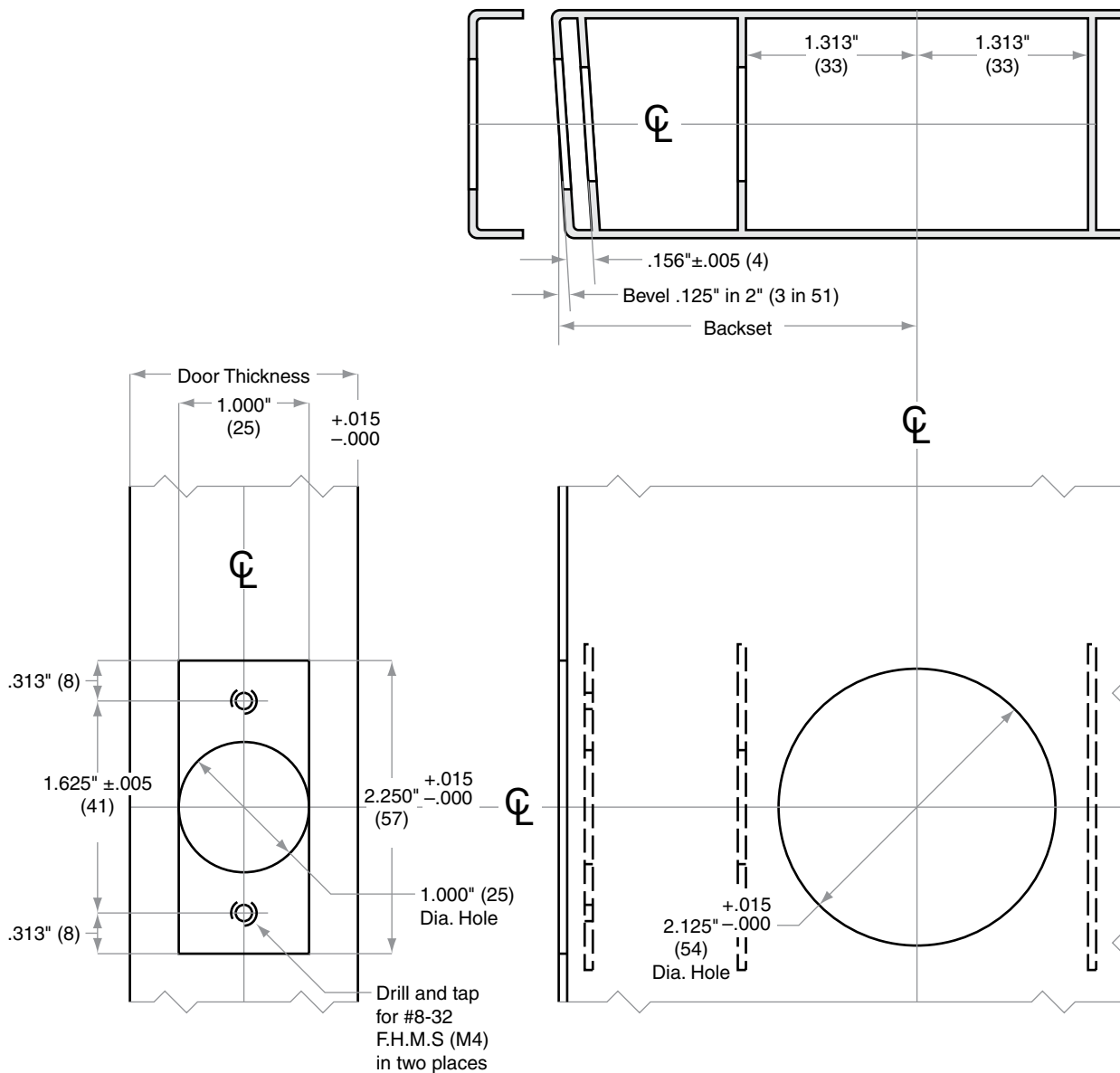
FC-Series

FC21

Door Type: Metal, Flat or Beveled
 Door Thickness: 1 $\frac{3}{8}$ " (35 mm)–1 $\frac{3}{4}$ " (44 mm)
 Faceplate: Square Corner, 1" (25 mm) wide
 Backsets: 2 $\frac{3}{8}$ " (60 mm), 2 $\frac{3}{4}$ " (70 mm)

Standard backset in bold.

For metal door installations suitable reinforcement is required to support latch in center of door and to prevent lateral movement



Dimensions shown in parentheses () are in millimeters.

DRAWING IS NOT TO SCALE!

Customer service: 888-805-9837

We can help you find the correct guide for your product and application!

© 2018 Allegion
 RFC101 Rev. 03/18
www.allegion.com/us

Door preparation guide

RFC101