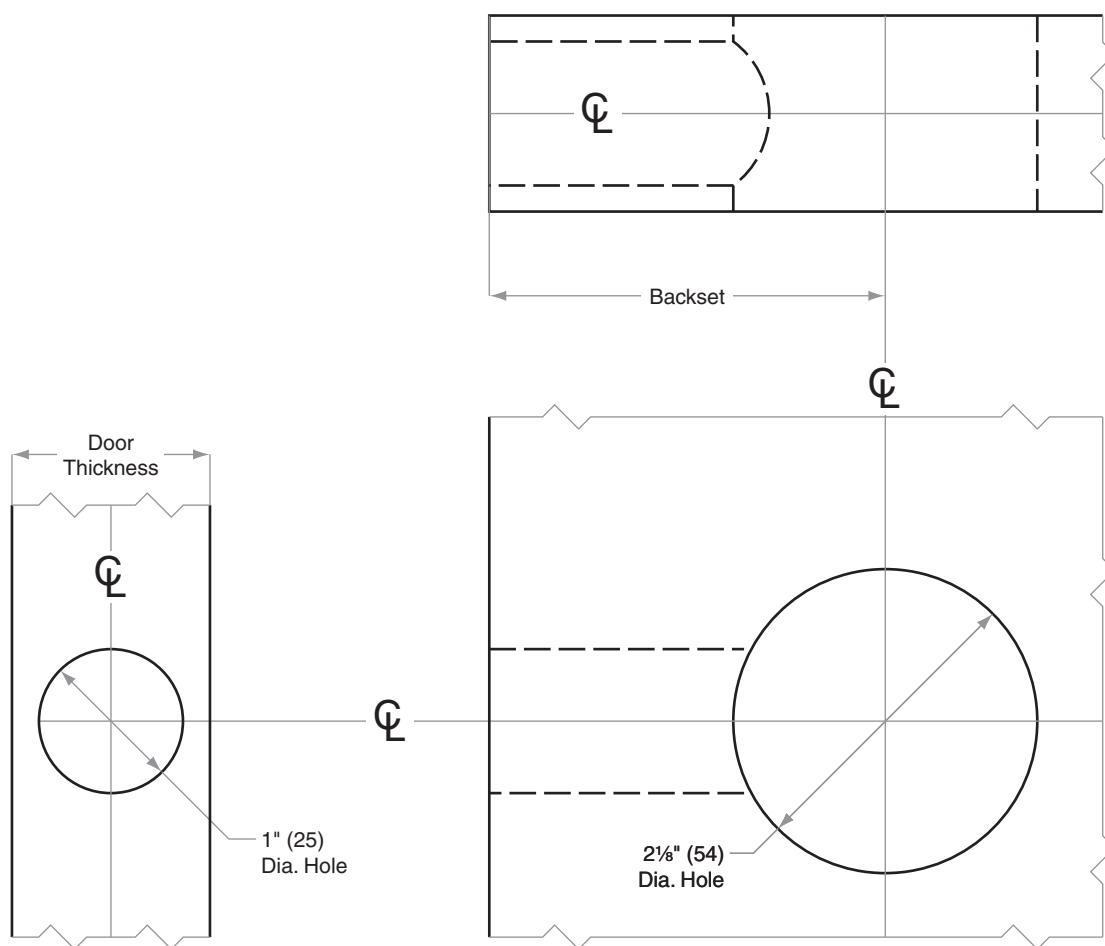




JD-Series

Models JD60, JD62, JD81

- Door Type: Wood or Composite, Flat
- Door Thickness: 1 $\frac{3}{8}$ " (35 mm)–1 $\frac{3}{4}$ " (44 mm)
- Faceplate: Circular Drive-In
- Backsets: 2 $\frac{3}{8}$ " (60 mm), 2 $\frac{3}{4}$ " (70 mm)



Dimensions shown in parentheses () are in millimeters.
Template is not to scale. Standard backset in bold.

Door preparation template

RJD103