

e*Tag® CARD CAPABILITIES GUIDE

Secura Key
A DIVISION OF SOUND CRAFT, INC.
 Smart. Reliable. Secure.



FOR ORDERS:
FAX (818) 206-6190
TOLL-FREE (877) 850-3449
E-mail: orders@securakey.com

SECURA KEY CARDS

CARD PART NUMBERING

The 4-letter model number (ETCI, ASCI, etc.) describes the type of card technology and form factor. Additional digits describe options such as mag stripe, slot punching, and signature panels. Customer Service or Sales can answer any questions about part numbering.

STANDARD PRODUCTS

Secura Key manufactures a variety of plastic cards and tags with a variety of inlays and ICs. Certain standard shapes with HF and UHF chips from various manufacturers are available.



ETCI



ETST



ETKT



ETPT



ETAT

PACKAGE DIMENSIONS				
ETCI/	ISO Standard thickness,	0.033"	(0.84mm)	thick
ASCI	CR80 dimensions; looks like a credit card.	3.375"	(85.73mm)	long
		2.125"	(53.98mm)	wide
ETST or ASST	Standard; designed to hang on a key ring.	0.067"	(1.70mm)	thick
		2.205"	(56.00mm)	long
		1.102"	(27.99mm)	wide
ETKT or ASKT	Special; designed to hang on a key ring.	0.067"	(1.70mm)	thick
		2.125"	(53.98mm)	long
		1.102"	(27.99mm)	wide
ETPT	Made for attachment to pallets, plastic totes, etc., with two holes.	0.067"	(1.70mm)	thick
		2.938"	(74.63mm)	long
		1.313"	(33.35mm)	wide
ETAT	Adhesive Tag	0.015"	(0.38mm)	thick
		1.73"	(43.94mm)	long
		0.95"	(24.13mm)	wide

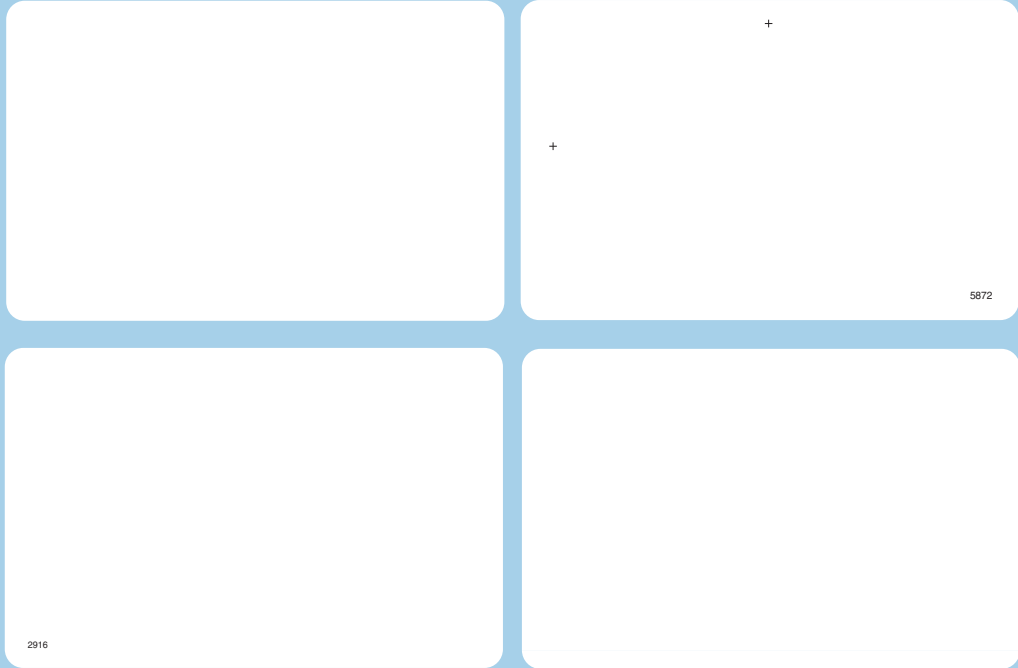
INLAYS		
ETCI02-1	45mm X 76mm ISO 15693 2K bit	
ETCI04-5	34mm X 65mm ISO 15693 2K bit	Standard for ETCI
ETCI14-1	45mm X 76mm ISO 14443 1K bit	
ETST03-2	22.5mm X 38mm ISO 15693 2K bit	Standard for ETST, ETKT & ETPT
ETKT03-9	22.5mm X 38mm ISO 15693 2K bit	
ETPT03-9	22.5mm X 38mm ISO 15693 2K bit	
ETAT03-2	24mm X 44mm ISO 15693 512 bit	Standard for ETAT
ASCI	71.20mm X 22.4mm ISO UHF Gen 2 EPC	
ASST	32.5mm x 20.5mm ISO UHF Gen 2 EPC	
ASKT	32.5mm x 20.5mm ISO UHF Gen 2 EPC	

E*TAG® CARDS AND KEY TAGS STANDARD CARDS

ETCI-HF ASCI-UHF

AF 5872
Blank
Front & Back
with
Cross Hairs
for slotting

AF 2916
Blank
Front & Back



FRONT

BACK

ETST-HF

6360
Standard

With
Optional
Numbering

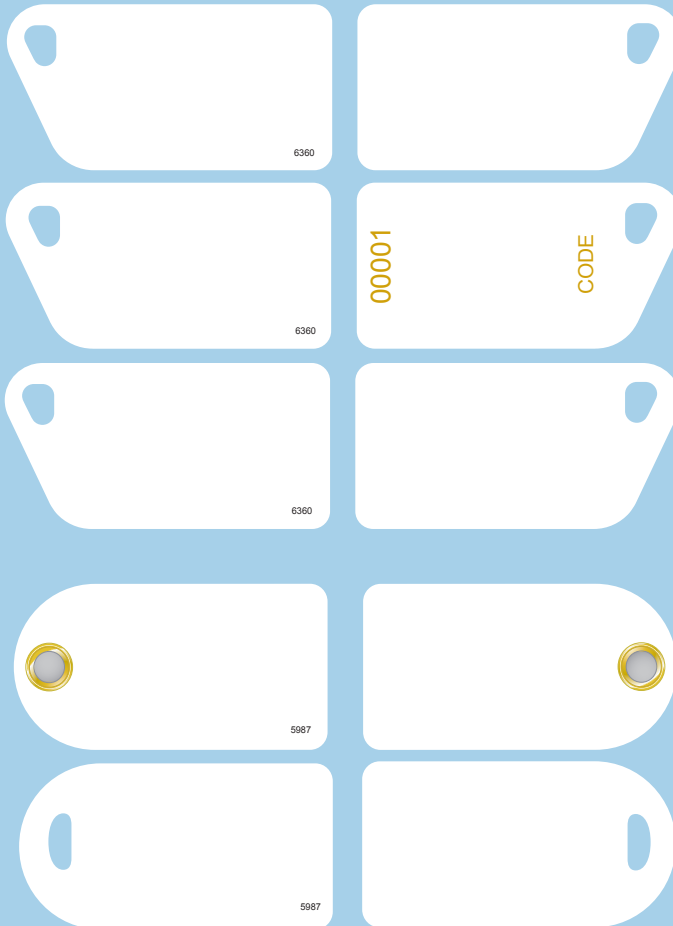
ASST-UHF

AF6360
Standard

ETKT-HF

5987
Optional
Eyelet
w/Round
Hole

Optional
1/2 Moon



e*Tag® Cards and Key Tags

e*Tag® products are available as standard wallet cards and in two key tag designs (shown actual size).

You may also specify all-white cards and tags, as shown. AF 5872 or 2916 for cards, or for key tags, AF 6360 for ETST tags or AF 5987 for ETKT with moon shaped hole, all at no extra charge. Also available, AF 5987 with round hole (not shown), with or without optional eyelet.

Custom artwork can also be provided, at an additional charge.

GUIDE TO ORDERING CARDS WITH CUSTOM ARTWORK

Secura Key is an industry leader in the creation of cards with custom, four-color graphics.
A minimum quantity of 250 cards is required for custom artwork.

Follow these steps to order cards with custom artwork:

- 1. Submit Artwork to Secura Key**
Preferred file format is Adobe Illustrator, however TIF, JPG, EPS and PDF are also accepted. If there is any text, you must include the fonts as well. **All printing is done in a 4 color process.** If you want to match to a specific color, send a printed sample and our art department will create artwork to your specifications. PhotoShop images such as JPG, TIF, PSD must be in 300 dpi or higher at actual size. The standard plastic color is white. If another plastic color is desired, contact Customer Service or sales for more information.
- 2. Submit Your Purchase Order For Custom Cards**
With a minimum card order of **250 cards**, our Art Department will produce a proof. This proof provides samples of the artwork and ink colors to be used. (The actual colors may vary slightly from the proof since printing colors on plastic is more variable than printing on paper.) Secura Key will send proofs overnight at no charge.
- 3. Get Your Customer To Sign The Proof**
The proof should be signed with no reservations. If changes are required, a new proof will have to be made. The new proof will be completed within one week and again sent out for approval. Once the proof is approved with no changes you must return it to Secura Key. We cannot begin printing custom cards until we have a signed proof at our factory.
- 4. Job Completion**
The typical lead time is four weeks after we receive the signed proof at the factory.
- 5. Reorders**
To reorder cards with the same artwork and colors use the four-digit artfile number which appears in the corner of every card. Simply specify the artfile number and order a minimum of 250 cards. **The typical lead time for reorders of custom cards is three weeks.**
- 6. Custom Printing Charges: There is a flat fee for custom printing**

CARD OPTIONS

The following options can be specified in your card order. The options you choose will be reflected by the manufacturing code, which follows the base card part number. Customer Service can give you the complete card part number for the options that you request.

SIGNATURE PANEL – Blank area which accepts a signature in ink. Available on ETCI.

SLOT – for strap clip. Can be punched vertically or horizontally in ETCI

HOLE — for keychain

EYELET – available on ETKT-03 keytags

MAG STRIPE – HiCo magnetic stripe on top/back side of card. Unencoded. Available on ETCI.

CARD ENCODING — Programming of information into open memory of chip. Technical specifications required.

SEQUENTIAL BARCODES AND OR PRINTED NUMBERING

LASER OR INKJET NUMBERING – technical specification required

CARD FINISH OPTIONS

GLOSSY FINISH – for dye-sublimation printing

MATTE FINISH – to conceal scratches and wear marks

All custom-printed cards have a clear PVC overlay to protect the printed graphics from wear.



20301 Nordhoff Street • Chatsworth, CA 91311
818-882-0020 • Fax: 818-882-7052
Toll Free: (800) 891-0020
mail@securakey.com • www.securakey.com