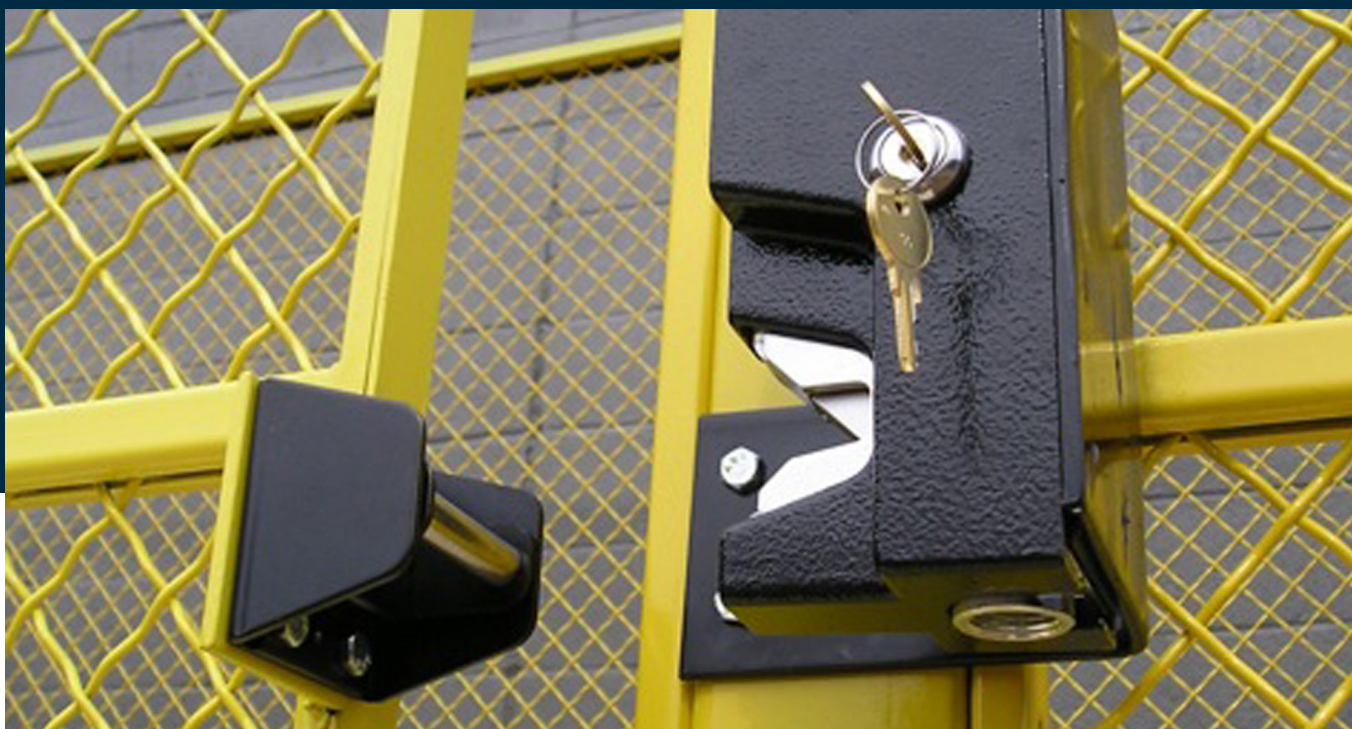
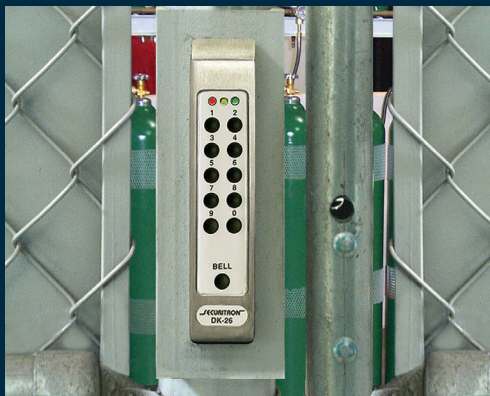


GATE&FENCE



SECURITRON®
ASSA ABLOY

Experience a safer
and more open world

ABOUT SECURITRON

As the world's premier supplier of electronic locking systems and access control components, Securitron, an ASSA ABLOY Group brand, excels in manufacturing a wide range of products, from electromagnetic locks and accessories, to exit devices, power supplies, digital entry systems and much more. Securitron is known for its continued commitment to excellence in customer service and product quality.

An Industry Leader.

Securitron proudly offers the best warranty in the industry to our customers. Nearly all of Securitron's products are covered by our award-winning MagnaCare® lifetime, no fault, no strings attached, replacement warranty. The remaining products are covered under our three-year SecuriCare warranty. Our warranties provide for product replacement for ANY REASON. We believe your customer care experience should be NO FAULT and HASSLE FREE.

Our Customers Come First.

At Securitron, we pay special attention to the needs of our customers. Securitron.com has a whole section dedicated to Support, which includes a link to our knowledgeable chat support with interactive video assistance. We also offer free wiring diagrams in our online Digital Asset Search and expert technical support to help you with your installation.

Our 1-800-MAGLOCK sales and services support line puts you in touch with our informed and friendly team to assist you with the smallest detail, or the most difficult application.

A Bright Future.

Backed by the strength of ASSA ABLOY, Securitron continues to grow. Our Green Circle Certified manufacturing facility in Phoenix, AZ features improved energy efficiency, air quality and sustainability.

For more information, visit www.securitron.com

SECURITRON®

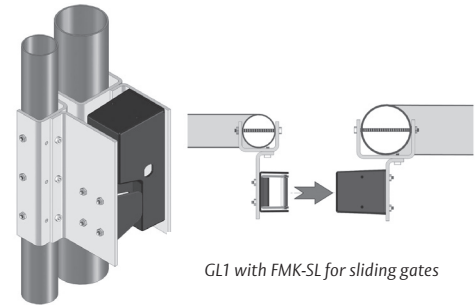
ASSA ABLOY

Experience a safer
and more open world



Gate Locking System

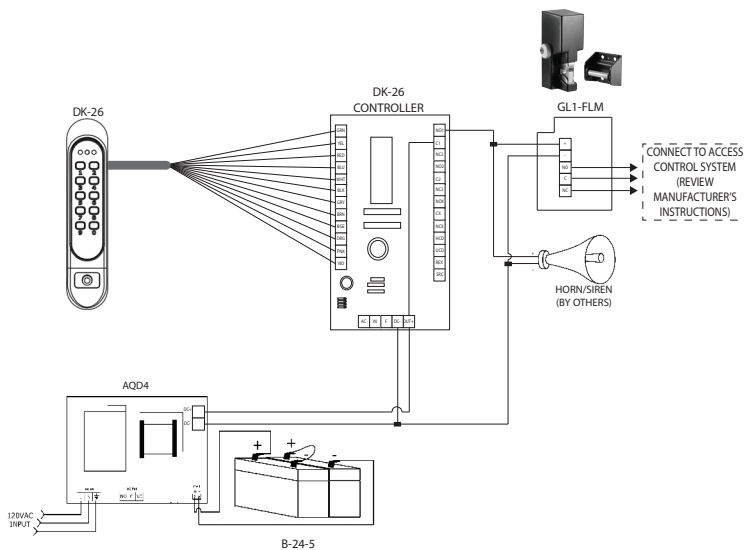
Maximize your Securitron gate locking system by pairing it with an Ameristar fence. ASSA ABLOY group brand Ameristar, based in Tulsa, Oklahoma, focuses on increasing strength & durability, enhancing the aesthetic appearance of modern fence products, and promoting ease of installation. They are known for producing the highest quality residential, commercial, industrial and high-end security fences in today's market place, including sites such as the Statue of Liberty, the 9/11 Memorial in New York City, and the Dallas Cowboys Stadium.



GL1 with FMK-SL for sliding gates

Outside Operation

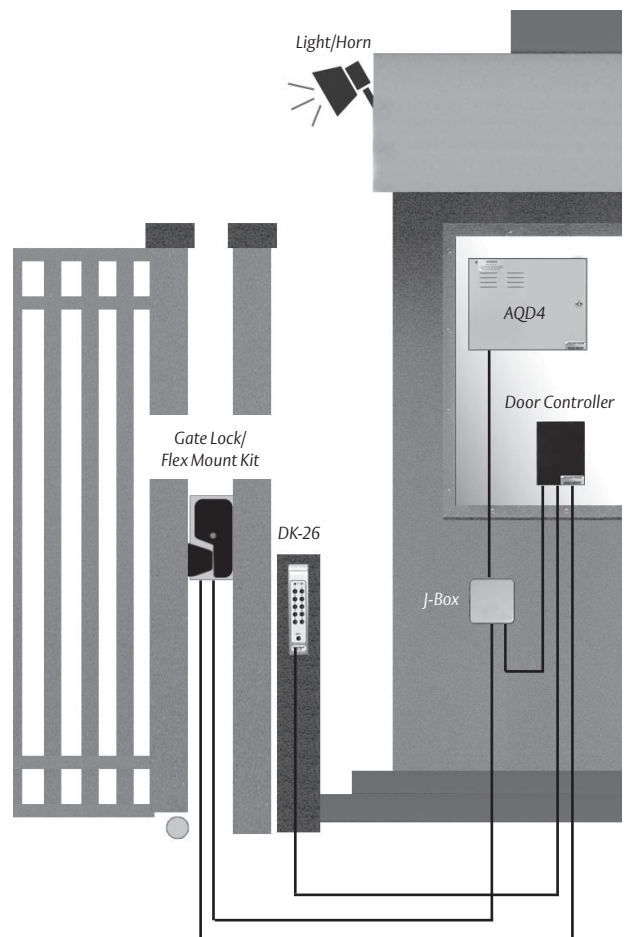
The gate is secured via the GL1 Gate Lock. Entry is permitted using the weatherproof keypad. DKC's internal door prop alarm feature activates horn if gate remains open too long.



Shown with Access Control Keypad System
Use on any Exterior Access Controlled Security Gate

System Components

- Gate Lock GL1-FS
- AQD4 Power Supply
- Flex Mounting Kit
- DK-26 Digital Keypad
- Battery B-24-5



GL1

Electromechanical Gate Solution Offers One Ton of Holding Power

The heavy duty G1 Electromechanical Gate Lock provides weather-resistant access control for a wide range of gate applications. The GL1 provides 2,000 lbs of holding force for electrical and manually operated indoor or outdoor gates where preload is a concern. Ideal for swinging or sliding vehicle, pedestrian, or stock gate access control.

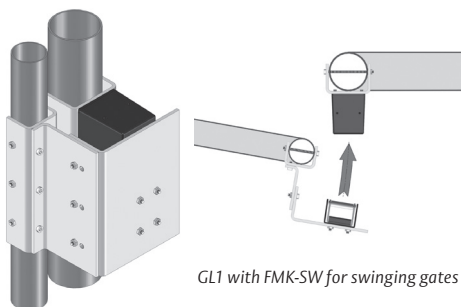
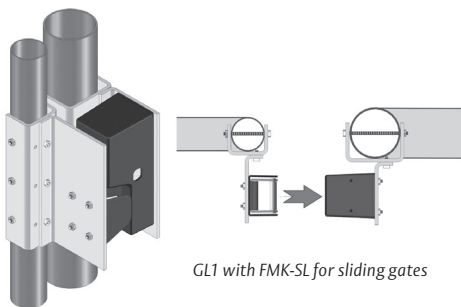
How to Order

MODEL SERIES	LOCK FAIL STATE	MONITORING OPTIONS
GL1	- FS	M
GL1	FL Fail Locked (Fail Secure)	(blank) No Monitoring
	FS Fail Safe	M Monitored

For Flex-Mount Bracket Kits see page 6

Mortise Spacer Guide

CYLINDER LENGTH	SPACER REQUIRED
1" [25.4mm]	1/4" [6.35mm]
1-1/8" [28.5mm]	3/8" [9.5mm]
1-1/4" [31.75mm]	1/2" [12.7mm]



Features

- 2,000 lbs [907 kg] holding force
- Operates under preload up to 100 lbs
- Automatic dual-voltage — no field adjustment required
- Accepts a standard mortise cylinder with Adams Rite MS cam for manual key override (not included, see spacer guide below)
- Self-aligning receiver (+/- 1/2" horizontally) helps compensate for gate misalignment and sag
- Tamper resistant cast housing
- Optional latch status monitor
- Surface mount
- SecuriCare three-year, no-fault, no questions asked warranty

Dimensions

2-3/4" L x 7-1/4" W x 3-1/4" D
[70mm L x 184mm W x 83mm D]

Specifications

Electrical

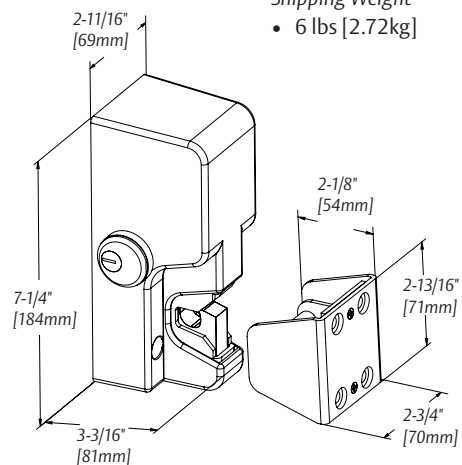
- 12 Volts Initial (Peak): (~1.0 sec.) at 870 mA
Reduced: 290 mA
Power Consumption: 3.5 Watts
- 24 Volts Initial (Peak): (~1.0 sec.) at 720 mA
Reduced: 170 mA
Power Consumption: 4.1 Watts

Environmental

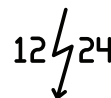
- Operating Temperature: -58° to +167°F [-50° to +75°C]
- Indoor or outdoor use

Shipping Weight

- 6 lbs [2.72kg]



SecuriCare
Warranty



Dual Voltage
12/24

M62FG-SASM

The Shock Absorbing Magnalock Solution for Outdoor Gates

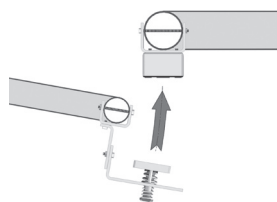
The M62FG-SASM is the only heavy duty Magnalock specifically designed to secure and protect gates. This weatherproof unit delivers 1,200 lbs of holding force and comes equipped with conduit fittings and a special shock absorbing strike mount (SASM). This unique design dramatically prolongs the life of the lock, the gate and other hardware by controlling excessive impact between the strike plate and the magnet.

The SASM is also available as a separate retrofit kit and is compatible with M32, M62 or M82 Magnalock strike plates for areas prone to excessive force closures or slamming.

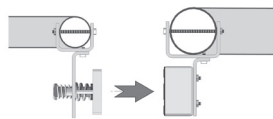
How to Order

MODEL SERIES	MOUNTING METHOD	STRIKE PLATE OPTIONS
M62	FG	– SASM
M62 1,200 lbs	FG Face drilled, gate conduit	SASM Shock Absorbing Strike Mount

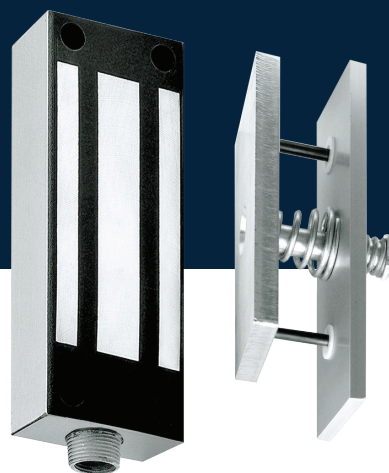
For Flex-Mount Bracket Kits see page 6



M62FG-SASM on Swinging Gate Using Flex-Mount Bracket Kit FMK-SW



M62FG-SASM on Sliding Gate Using Flex-Mount Bracket Kit FMK-SL



Features

Standard Features

- Flexible bracket options for swinging or sliding applications
- 1,200 lbs [544kg] holding force
- Fully sealed for weather-proof operations
- Includes universal threaded conduit fitting 1/2" [12.7mm] female - 3/4" [19mm] male
- 10 ft. [3.05m] of jacketed, stranded conductor cable
- Noise suppression with built-in MOV
- Automatic dual-voltage — no field adjustment required
- Rust resistant — all ferrous metal surfaces plated for durability
- MagnaCare® lifetime replacement, no-fault, no questions asked warranty

Product Options

- B** BondSTAT™ magnetic bond sensor — Patented (MBS)
- D** Integrated door position switch (DPS)
- F** Face drilled
- G** Gate conduit
- SASM** Shock absorbing strike mount — shock absorption and rebound assistance for proper gate alignment

Dimensions

8"L x 1-3/4"D x 3"H [203.2mm L x 44.45mm D x 76.2mm H]

Specifications

Certifications

- UL 10C Listed
- CAN4-S104, CAN/ULC-S533 Listed
- ANSI/BHMA A156.23, Grade 2; E08501-1000
- CSFM — California State Fire Marshal Approved

Electrical

- 250 mA at 12 VDC
- 150 mA at 24 VDC

Environmental

- Operating Temperature: -40° to +140°F [-40° to +60°C]
- Indoor or outdoor use

Shipping Weight

- 12 lbs [5.44kg]



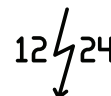
MagnaCare
Warranty



Grade 2



Fire Rated



Dual Voltage
12/24

Experience a safer
and more open world

FMK

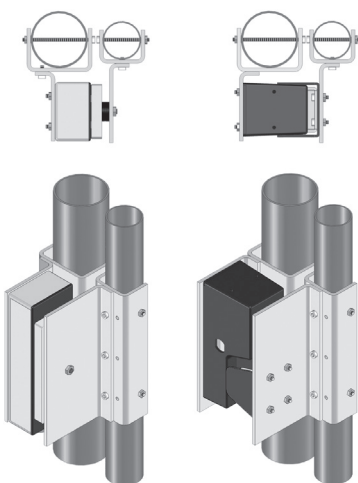
Bracket Kits Extend Access Control to Gates and Fences

The FMK Flex-Mount Bracket System is an intuitive set of mounting brackets designed exclusively for use with the M62FG Magnalock® and the GL1 Gate Lock. Pre-formed post channels and plates of varying lengths make it easy for you to assemble a professional looking, high-security gate lock mounting platform in minutes, without special tools.

How to Order

PART NUMBER	DESCRIPTION
FMB9-4	Post shim kit for Flex-Mount Brackets - (Set of 4)
FMK-SL	Flex-Mount Kit for Sliding Gate
FMK-SW	Flex-Mount Kit for Swing Gate

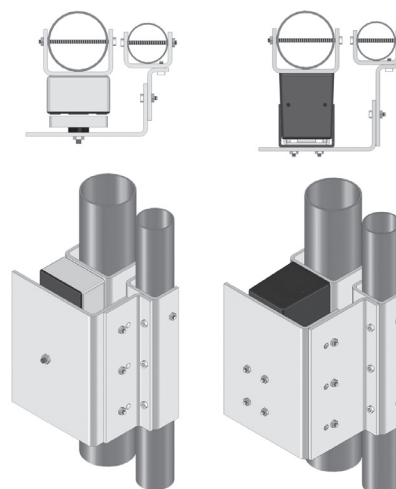
Sliding Gate



FMK-SL shown with M62FG

FMK-SL shown with GL1

Swinging Gate



FMK-SL shown with M62FG

FMK-SL shown with GL1



Features

- Permits electronics to be mounted on fence posts or gate posts
- Brackets are reversible
- Bracket kits include brackets, mounting hardware and post shims
- Post brackets are pre-drilled
- Zinc-plated steel provides durability and long life
- Bolt on or weld for installation
- Compatible with maximum 3" round post with minimum pole separation of 1"
- Use with Post Shim Brackets for smaller post sizes
- MagnaCare® lifetime replacement, no-fault, no questions asked warranty

Dimensions

2-3/4"L x 7-1/4"W x 3-1/4"D
[70mm L x 184mm W x 83mm D]

Specifications

Shipping Weight

- 13.4 lbs [6.08kg]

Notes

- M62FG can be direct mounted on square posts
- To use FMK-SL with M62FG-SASM, post separation should be 1" to 2-1/4" [25.4mm to 57.15mm]
- To use FMK-SW with GL1 or M62FG, post separation should be 1" to 2-3/4" [25.4mm to 69.85mm]
- To use FMK-SL with GL1 or M62FG, post separation should be 1" to 3-3/4" [25.4mm to 95.25mm]



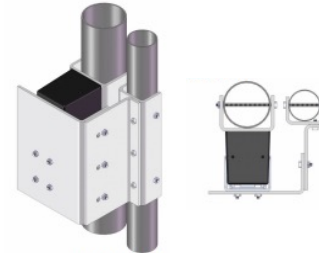
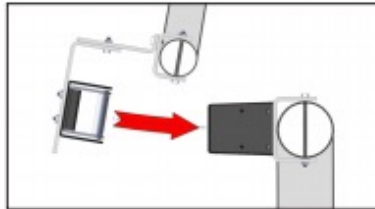
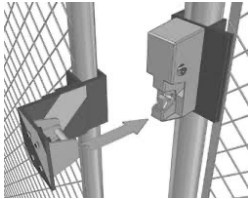
MagnaCare
Warranty

Specialty and Electromagnetic Locks for Gates

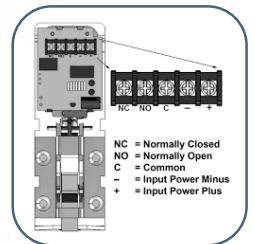
EAC Perimeter Security Applications



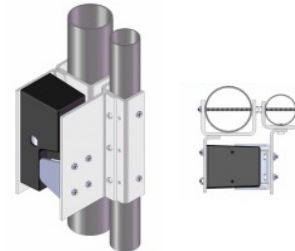
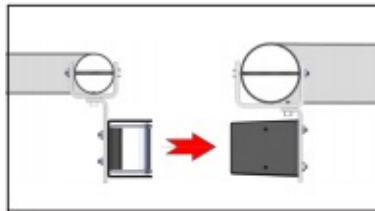
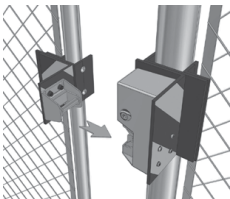
Specialty Locks



Shown with **FMK-SW**
(Flex-Mount Swinging Gate Kit)



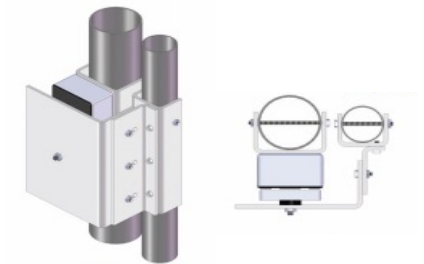
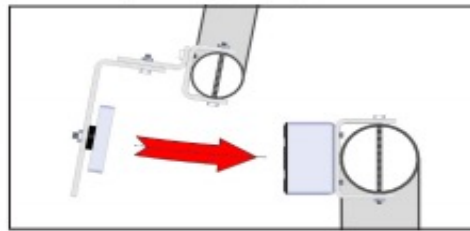
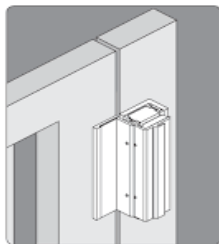
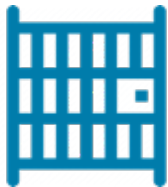
Sliding



Shown with **FMK-SL**
(Flex-Mount Sliding Gate Kit)

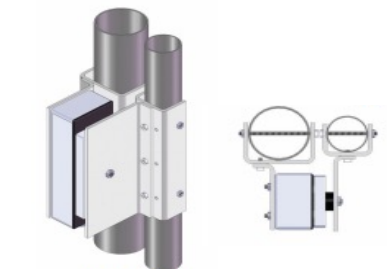
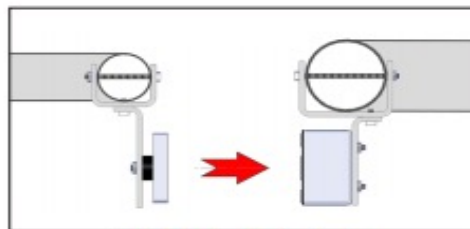
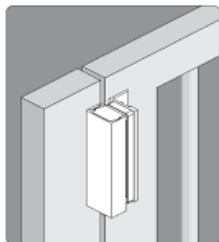
Electromagnetic Locks

Swinging



Shown with **FMK-SW**
(Flex-Mount Swinging Gate Kit)

Sliding



Shown with **FMK-SL**
(Flex-Mount Sliding Gate Kit)

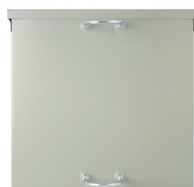
BPSS

Clean Power Meets Green Power

The BPSS Solar Power Supply is the only out-of-the-box solution specifically designed for remote electric lock control where conventional power is impractical or not available. This complete solar power system powers most single-point access control device and fail secure lock (intermittent duty only) by producing sustainable solar and battery operated power. Select the BPSS-10 or BPSS-20 (10 or 20 charging watts respectively), based on solar activity in the area/region where you're installing.

How to Order

MODEL SERIES	SOLAR PANEL OUTPUT
BPSS	- 10
BPSS Solar Power Supply	10 10 Watts
	20 20 Watts



BPSS Standard
2" Pole Mounting Kit



PMK-3 - Optional 3"
Large Pole Mounting Kit



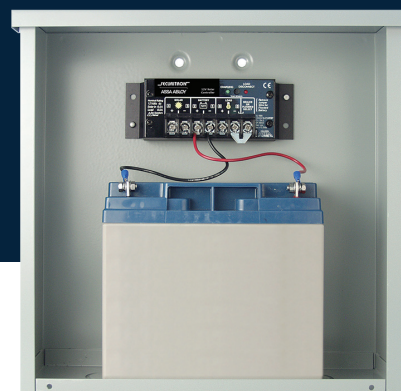
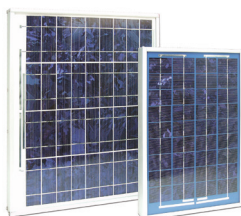
Included Solar Panel
Mounting Kit



SWK - Optional Solar Panel
High Wind Kit for 20W Panel

20W Panel

10W Panel



Features

Standard Features

- Works with most fail secure electric locks
- Works with most keypads or card readers
- Operates outdoors
- 100% solid state solar controller comes with anodized aluminum case and marine-rated terminals
- Low-voltage battery monitor protects batteries from deep discharge
- High-efficiency photovoltaic panels use silicon nitride multicrystalline cells
- Green charging LED indicator
- Comes with mounting brackets for enclosure and solar panel
- Approved for use in hazardous locations — Class 1, Division 2, Groups A, B, C, D
- SecuriCare three-year, no-fault, no questions asked warranty

Product Options

- Mounting brackets available for fence/pole mounting (to 3" [76.2mm] diameter)
- Wind kit available for high wind areas
- Available in 10W and 20W versions

Dimensions

Enclosure

- Outdoor (NEMA-3R): 12-1/2"L x 13-5/8"W x 4-7/16"D [318mm L x 346mm W x 113mm D]

Standard Enclosure Brackets

- Accommodates up to 2" diameter pole/post

Specifications

Solar Panels

Electrical

- Output voltage: 14.4 VDC max — Maximum 125 mA continuous
- 1 A maximum operating the locking device — intermittent duty only
- Number of daily lock operations will vary due to solar activity and current draw

Environmental

- Operating Temperature: -4° to +113°F [-20° to +45°C]
- Panel Operating Temperature: -40° to +185°F [-40° to +85°C]

Size

- BPSS-10: 14-1/2"W x 12-3/16"L x 11/16"D [368mm W x 310mm L x 17.5mm D]
- BPSS-20: 22"W x 14-3/16"L x 11/16"D [559mm W x 360mm L x 17.5mm D]

Rated Power

- BPSS-10: 10 W
- BPSS-20: 20 W

Panel Weight

- BPSS-10: 3.3 lbs [1.5kg]
- BPSS-20: 5.5 lbs [2.5kg]

Shipping Weight

- 15 lbs [6.8kg]



SecuriCare
Warranty

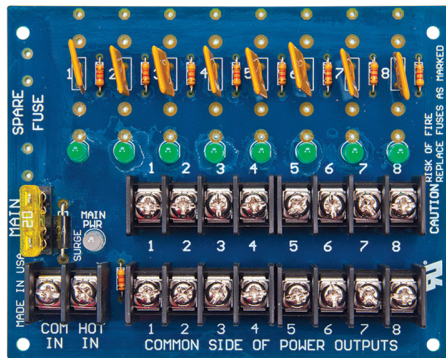


Battery
Backup

AQD4 Series

Switching Power Supply 4A 12 VDC/24 VDC Dual-Voltage

The Securitron AQD4 Series of switching power supplies are dual voltage, UL listed, supervised units. These units are field selectable with a dedicated battery charging circuit. They provide 4 Amp at 12VDC or 24VDC continuous, with up to 16 independently controlled power limited outputs.



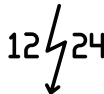
PDB-8C



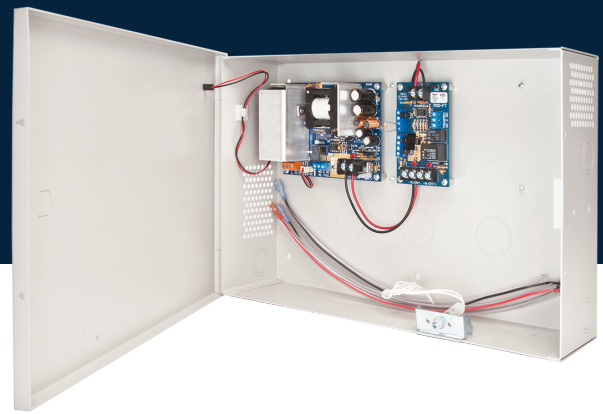
MagnaCare
Warranty



Battery
Backup



Dual Voltage
12/24



Features

- AQD Series is dual voltage 12 or 24 VDC field selectable continuous output
- Tolerates brownout or overvoltage input +/- 15% of nominal voltage
- Thermal shutdown protection with auto restart
- Circuit breaker protects against overcurrent and reverse battery faults (batteries sold separately)
- Dedicated battery charging circuit prevents overvoltage on locking devices (except for AQD1)
- Expandable up to 16 outputs in the standard enclosure
- Outputs are Class 2 limited when used with PTC Polyswitch output distribution boards
- Available with a single relay fire trigger or individually fire trigger relayed outputs
- Low noise design provides better than linear performance
- Mix and match configuration allows for UL compliance even when used in other UL listed enclosures
- MagnaCare® lifetime replacement, no-fault, no questions asked warranty

Dimensions

Enclosure

- 14"L x 14"W x 4-3/4"D [356mm L x 356mm W x 121mm D]

Specifications

Certifications

- UL 294 listed
- UL 603 listed
- ULC-S318 listed
- ULC-S533 listed
- RoHS Compliant
- REACH Compliant

Electrical

- 12 VDC or 24 VDC field selectable output
- 115 or 230 VAC input
- Supports up to two (2) sealed gel, AGM or wet lead acid batteries
- Up to 90% efficiency
- Low-voltage ripple design as low as 240 mV p-p

Environmental

- Operating Temperature: -4° to +122°F [-20° to +50°C]

Shipping Weight

- 12.7 lbs [5.76kg]

How to Order

MODEL SERIES	OUTPUT TYPE	OUTPUT POWER	ENCLOSURE STYLE	NUMBER OF OUTPUTS	FUSE TYPE †	NUMBER OF RELAYS	FUSE SIZE
AQ	D	6	—	8	F	8	2
AQ	D Dual Voltage	1	— In Enclosure	(blank) One Output, No Distribution Board			
		2	B Circuit Board Only	4	F Glass Fuses	8R	2 2 Amp
		4		8	C PTC Polyswitch	16R	
		6		12			
				16			

† Fuse type and size must be the same for both distribution boards for standard ordering.

For custom configurations, please contact the factory at 800 626 7590.

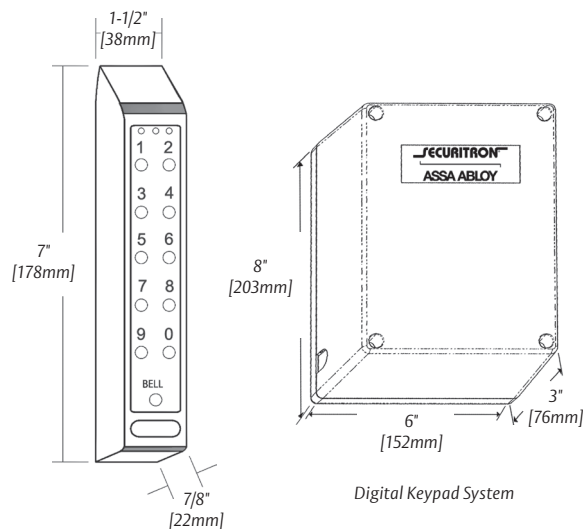
DK-26 Digital Keypad

Digital Control System for Narrow Stile Outdoor Applications

The DK-26 digital keypad system provides medium/high security control of electric locks in one or two door applications where doors have the same control needs. The fully weatherproof, rugged stainless steel keypad can be mounted in most outdoor environments. Encased in a separate enclosure for secure installation, the full-featured, easy to program, DK-26 is ideal for narrow stile applications.

How to Order

MODEL SERIES	SPECIAL FEATURE	FINISH
DK-26	P	BK
DK-26 Keypad System	P Keypad only	BK Black Anodized SS Stainless Steel



Features

Standard Features

- Cast stainless steel with 11 EPDM rubber keys
- Weatherproof and vandal resistant
- Mounts on a narrow mullion
- Audible keystroke echo
- True 10 digit operation (keys are not paired)
- 59 users with multiple entry codes
- User code and hard code disable feature
- Passage Mode and Lockout Mode
- Request to exit (REX) input
- 16 ft. [4.8m], 12 conductor, 22 gauge keypad cable
- 3 LEDs and a bell button
- MagnaCare® lifetime replacement, no-fault, no questions asked warranty

Product Options

- Keypad available as system or separately

Dimensions

Keypad

- 1-1/2"W x 7"H x 7/8"D [38mm W x 178mm H x 22mm D]

Enclosure

- 6"W x 8"H x 3"D [152mm W x 203mm H x 76mm D]

Specifications

Certifications

- CE: EN 50091-1, EN 61000-6-2 Approved

Electrical

- 12 VAC/VDC: 7 mA at rest, 160 mA active
- 24 VAC/VDC: 20 mA at rest, 190 mA active

Environmental

- CPU Operating Temperature: +32° to +158°F [0° to +70°C]
- Keypad Operating Temperature: -22° to +158°F [-30° to +70°C]
- Indoor or outdoor use

Shipping Weight

- 5 lbs [2.27kg]

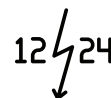
Accessories

DK26-CPSS Cover Plate

- Allows DK-26 and DKC-37 to be mounted over a single gang box
- MagnaCare® lifetime replacement, no-fault, no questions asked warranty



MagnaCare
Warranty



Dual Voltage
12/24

PB

Push Buttons

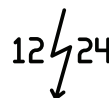
High-quality Securitron Push Buttons are available in a broad selection of colors, sizes, switch types and outputs. With a wide range of options for interchangeable lenses and field convertible outputs, Securitron push buttons can release any maglock, alone or in conjunction with door closers and other hardware.



	PB	PB2	PB3	PB4L	PB5
Shape/Size	Medium Round	Large Square	Assorted	Stainless Push Button with Illuminated Halo	Large Round
Contacts	7A; DPST	5A; SPDT or DPDT	3A; Field convertible from DPST to DPDT	4A; DPDT	5A; Field convertible from DPST to DPDT
Voltage	12 or 24VDC	12 or 24VDC	12 or 24VDC	12 or 24VDC	12 or 24VDC
Plate	Stainless steel, single gang	Stainless steel, single gang	Stainless steel, single gang or narrow stile	Stainless steel, single gang or narrow stile	Stainless steel, single gang
Size	4-1/2" x 2-3/4" (114mm x 70mm)	4-1/2" x 2-3/4" (114mm x 70mm)	Single gang: 4-1/2" x 2-3/4" (114mm x 70mm) Narrow stile: 4-1/2" x 1-3/4" (114mm x 44mm) Surface mount: 3-7/8" x 2" (98mm x 51mm)	Single gang: 4-1/2" x 2-3/4" (114mm x 70mm) Narrow stile: 4-1/2" x 1-3/4" (114mm x 44mm)	4-1/2" x 2-3/4" (114mm x 70mm)



MagnaCare
Warranty



Dual Voltage
12/24

TM-9

Time Mate Timer



The compact TM-9 extends the hold-open request of a pushbutton or Key switch, enabling single-hand operation of the door or delaying re-arming of alarms.

Features

- Miniature timer extends momentary switches
- Fits in outlet boxes with push buttons or keyswitches
- 3A SPDT relay energizes for 2 to 36 seconds
- Time setting is selected by easy to configure DIP switches
- Applications include releasing electric locks and shunting alarm contacts
- MagnaCare® lifetime replacement, no-fault, no questions asked warranty

Specifications

Electrical

- 12 or 24 VDC
- 24 VAC

Environmental

- Operating Temperature: +32° to +158°F [0° to +70°C]



MagnaCare
Warranty

B-12-5, B-24-5

Sealed Lead Acid Battery



Lead Acid Batteries provide battery back up when used with linear, switching, or EcoPower power supplies, ensuring continued operation of access control devices when the AC source power is compromised.

- Batteries are not covered under warranty

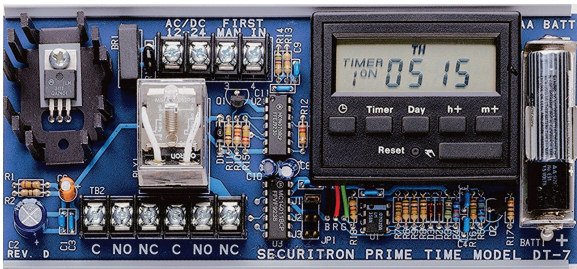
How to Order

PRODUCT	DESCRIPTION
B-12-5	Battery— 12 VDC, 5 Ah
B-24-5	Power Supply Plug-In—24 VDC, 5 Ah

DT-7

Prime Time Digital Timer

Control doors equipped with electrified hardware - with or without access control - with The DT-7 digital timer. The DT-7 can be used as a stand-alone unit, or in conjunction with DK and other products. Versatile programming supports timed unlocked, locked, or access-control-only states to turn electric locks or other security systems on and off at programmed times.



Features

- 7-day digital timer
- 10A DPDT relay can be operated in toggle or pulse mode
- 12 programmed on/off times
- Set daily (6 on, 6 off), on selected days or blocks of days
- “First Man In” feature delays preset action until first access
- Supports holiday programming
- 12 or 24 VAC or VDC
- AA battery provides backup to the display module program memory — battery not included
- MagnaCare® lifetime replacement, no-fault, no questions asked warranty

Specifications

Electrical

- 170 mA at 12 or 24 VAC or VDC

Environmental

- Operating Temperature: +32° to +113°F [0° to +45°C]

Shipping Weight

- 0.75 lbs [0.34kg]



MagnaCare
Warranty

ANYWHERE THE SUN SHINES

SECURITRON
ASSA ABLOY

PERIMETER ACCESS CONTROL

Do you need a proven perimeter locking system for a location that's off the power grid? No problem. Securitron offers perimeter access control for most any vehicle or pedestrian gate using 100% sustainable solar power. Forget trenching and wiring. This proven set of products will protect your gated assets - no matter where they are located.



DK-26
Digital Keypad



GL1
Electromechanical Gate Lock



BPSS
Boxed Power Supply
Solar - 10W or 20W

Securitron Warranties

At Securitron, we pay special attention to the needs of our customers. In 1999, Securitron introduced the first no strings attached warranty program called MagnaCare®, because we believe quality products and quality service should be the expectation, not the exception.

MagnaCare® Warranty

- Duration: Lifetime
- Conditions: Any reason, including but not limited to installation error, vandalism or act of God
- Replacement: Replacement product shipped at Securitron's expense via next day air freight if necessary
- Products covered: Most Securitron branded products manufactured since 1999



MagnaCare
Warranty

SecuriCare Warranty

- Duration: Three years
- Conditions: Any reason, including but not limited to installation error, vandalism or act of God
- Replacement: Replacement product shipped at Securitron's expense via next day air freight if necessary
- Products covered: Select products, including those with Aperio® technology and solar components



SecuriCare
Warranty

Check your individual product to determine warranty coverage. Batteries and consumables are not covered by Securitron warranty programs.

Learn more about Securitron's Warranty Programs at securitron.com

Need to make a claim?
Contact Customer Service
at 1.800.626.7590 or
customerservice@assabloy.com

GATE&FENCE

USA

Customer Support

p 800.626.7590

f 866.582.4641

securitron.com

10027 S. 51st Street, Ste 102
Phoenix, AZ 85044

CANADA

Customer Support

p 800.461.3007

f 800.461.8989

assaabloy.ca

ASSAABLOY DSS Canada
Vaughan, Ontario

customerservice.securitron@assaabloy.com

techsupport.securitron@assaabloy.com

orders.securitron@assaabloy.com

SECURITRON®

ASSA ABLOY

Experience a safer
and more open world

Securitron is a brand associated with Hanchett Entry Systems, Inc., an ASSA ABLOY Group company. Copyright © 2024, Hanchett Entry Systems, Inc. All rights reserved. Reproduction in whole or in part without the express written permission of Hanchett Entry Systems, Inc. is prohibited.

SEC-114-0724