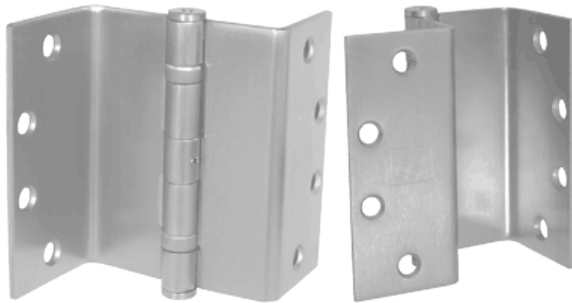


## SWING CLEAR TRANSFER HINGES CUTSHEET



- UL-F Rated
- 4' lead available at no charge. Less points of failure.
- Non-conductive wire access cap for added protection.
- Made in the USA

NO HASSLE  
3 YEAR  
WARRANTY



---

## QUALITY, SELECTION AND PRICING THAT'S SECOND TO NONE

The Command Access Energy Transfer Swingclear Hinges. The Energy Transfer Hinge (ETH) is the ideal way to pass low voltage power from the hinge jamb to the lockset without having any exposed wires. These hinges are commonly used with electric mortise and cylindrical locks, electric strikes (when on a pair of doors), electric exit trims, latch pullback devices, door mounted card readers and low voltage door lights. We can modify almost any hinge and we maintain a large inventory of most major hinge brands in various sizes and finishes. Contact us if what you need is not listed.

US CUSTOMER SUPPORT 1-888-622-2377 | [WWW.COMMANDACCESS.COM](http://WWW.COMMANDACCESS.COM) | CA CUSTOMER SUPPORT 1-855-823-3002

Command Access is not a licensee, or affiliated, associated or connected with Allegion, Assa Abloy, Stanley, Schlage, Falcon, Von Duprin, Dorma, Sargent, Corbin Russwin, Yale, Emtek, Adams Rite, Best, Precision, Arrow, Design Hardware, Cal Royal, Jackson, AHT, Marshall Best, Marks, Accurate, Baldwin, FSB, PDQ, Lawrence, Trans Atlantic, Hager, LSDA, General Lock, or Omnia or any of their subsidiaries or affiliates.

## SPECIFICATIONS

- All swing clear hinges are made for reversible applications.
- Designed to swing doors completely clear of the opening when door is opened 95°.
- When opened 90° door projects 3/32" past stop of jamb.
- Recommended for 3'0" x 7'0" x 1-3/4" doors not to exceed 150 lbs.
- For medium weight doors receiving average frequency service.
- Specify Bevelled or Squared
- All hinges are ANSI template.

## MODELS AVAILABLE

For Electric locks, exit trim, & strikes: Molex Connectors available:

- ETH2W - 2 Wire (20 gauge) - 4A@24V (per pair)
- ETH4W - 4 Wire (26 gauge) - 1A@24V (per pair)
- ETH6W - 6 Wire (26 gauge) - 1A@24V (per pair)
- ETH8W - 8 Wire (28 gauge) - 1A@24V (per pair)
- ETH10W - 10 Wire (28 gauge) - 1A@24V (per pair)
- ETH12W - 12 Wire (28 gauge) - 1A@24V (per pair)

For Electric Latch Retraction: Molex Connectors not available with heavy gauge wires

- ETH2WH - 2 Wire (18 gauge)
- ETH4WH - 2 Wire (18 gauge) + 2 Wire (26 gauge)
- ETH6WH - 2 Wire (18 gauge) + 4 Wire (28 gauge)
- ETH8WH - 2 Wire (20 gauge) + 6 Wire (28 gauge)
- ETH10WH - 2 Wire (20 gauge) + 8 Wire (28 gauge) • ETH12WH - 2 Wire (20 gauge) + 10 Wire (28 gauge)

How to Order: ETH4HW45SC-626 5SW Square

### NOTES:

Not all configurations are available on all hinge sizes.

All hinges are made to Command Access standardized templating unless otherwise requested.

Model No.	Notes:		
Customer:	Job No./Name:	Date:	Provided by: