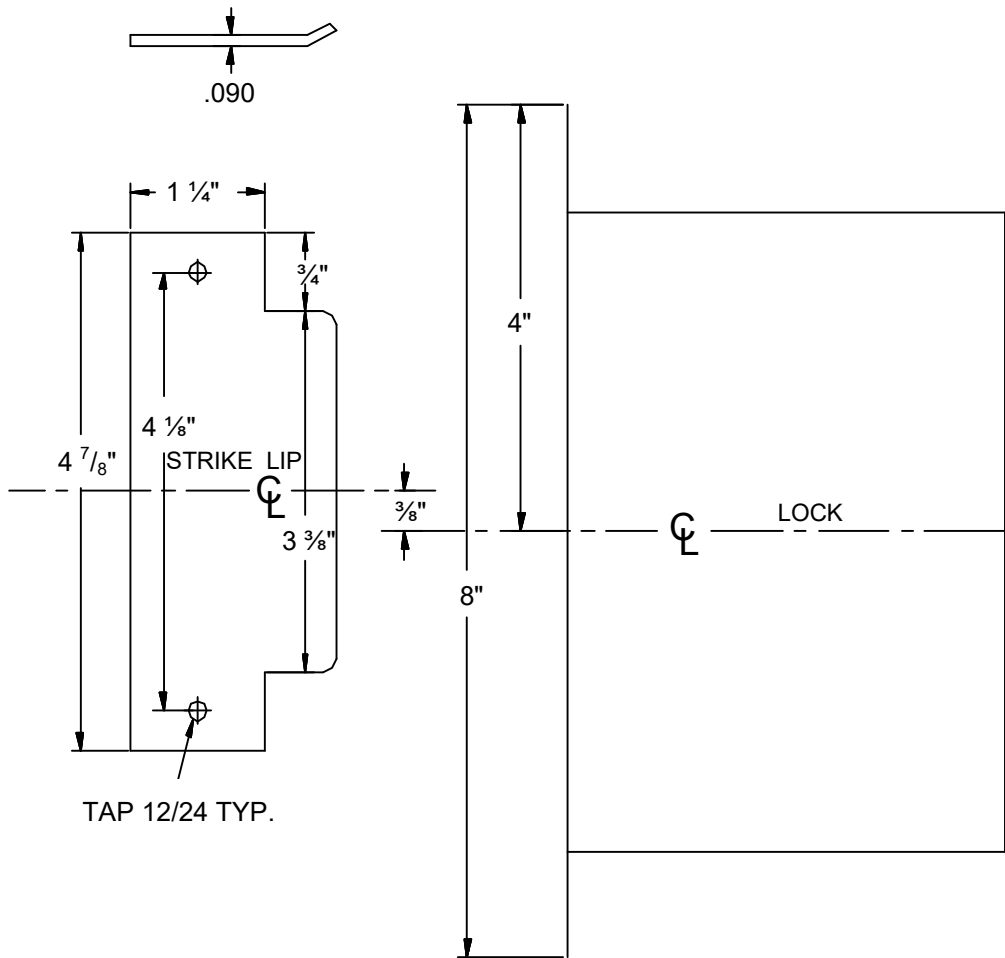




TEMP-ZR, R7500
HiTower ZR, R7500 SERIES
TEMPLATE - 2" FRAMES



NOT TO SCALE

NOTE:
 CONCRETE/
 MASONRY
 DETAIL
 SHOWN

DO NOT INSTALL PLASTER BOX

FOR STRIKE
 RELATION TO
 LOCK SEE
 LEFT SIDE OF
 TEMPLATE

NOTE:
 MINIMUM FRAME
 FACE 2"

RIGHT HAND
 SHOWN,
 LEFT HAND
 OPPOSITE

ELECTRICAL BOX BY FRAME MFG'R

IMPORTANT

Details show space requirements for electric controller box. Allowances for different wall construction materials must be taken into consideration. Install conduit connectors in top of box before welding to frame.

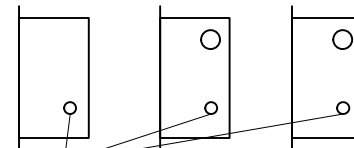
NOTE:

THE 3-5/8" CLEARANCE BETWEEN THE STRIKE REINFORCEMENT TABS IS CRITICAL. *MAXIMUM THICKNESS OF TABS .125

UL LISTED BOX AS SHOWN AVAILABLE FROM SECURITY DOOR CONTROLS PART #5000EB-2

3D perspective diagram of the electrical box installation. Dimensions include: 2" MIN. for the box depth, 3 5/8" MIN. for the strike reinforcement clearance, 4" for the box height, 8" for the box depth, 12" for the box height, 2 1/2" MIN. for the box width, and 1 45/64" MIN. for the box width. Labels include: REINF, CENTER LINE OF ANSI STRIKE LIP, and CONDUIT.

**HOLES REQUIRED
 FUNCTIONS**



KNOB B/SIDES	CYL OUTSIDE ONLY	CYL BOTH SIDES
7510	7520	7530
7540	7550	

Door Prep. Only

Identify the lock and manufacturer by letter prefix. Review proper manufactures template requirements for **door prep only**. See details far left and above for frame prep.

SOURCE #	MODEL #
ZR SDC R Schlage	7500 L9080