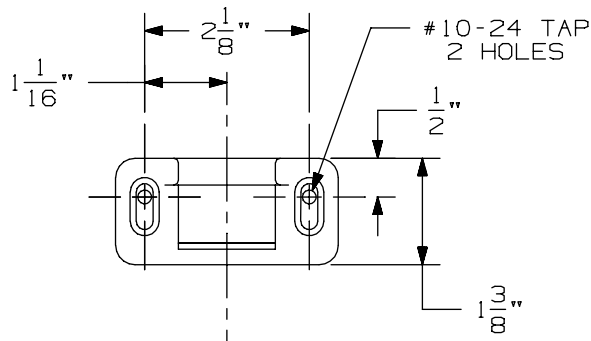
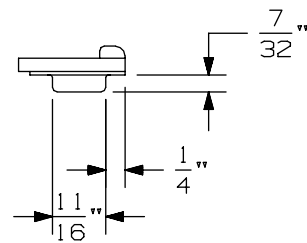
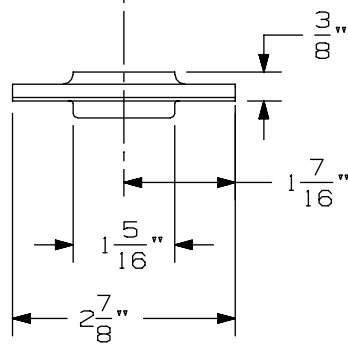


LHR APPLICATION SHOWN, RHR APPLICATION OPPOSITE



☉ DEVICE



1606 Half Mortise Strike

VON DUPRIN®

NOTES: SEE MASTER SHEET #10001 FOR SUGGESTED REINFORCING

TEMPLATE NUMBER:

30024_a

DATE:
05-23-13