

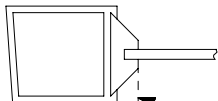
DEVICE INSTALLATION SCHEDULE		
INSTALLATION	BACKSET	STILE WIDTH
TWO VERTICAL ROD DEVICES (PANIC & FIRE)	1 3/16"	2" TO 2 3/4" **
	1 1/2"	2 3/4" TO 3 3/4"
	1 7/8"	3 3/4" TO 5"
	2 1/2"	5" TO FLUSH
SINGLE DOOR (PANIC ONLY)	1 11/32" *	2" TO 2 3/4" **
	1 1/2"	2 3/4" TO 3 3/4"
	1 7/8"	3 3/4" TO 5"
	2 1/2"	5" TO FLUSH
VERTICAL ROD & RIM DEVICE REQUIRES 1609J STRIKE	2 7/32"	3" MIN.
* 1/2" MAXIMUM STOP HEIGHT		

NOTE: BACKSET MAY VARY WHEN USED WITH COORDINATOR DEPENDING ON TYPE USED.

USE OF OUTSIDE TRIM MAY ALTER MINIMUM STILE REQUIREMENT. SEE TRIM TEMPLATE.

\*\*CONSULT FACTORY FOR STILE WIDTHS LESS THAN 2" TO ENSURE PROPER APPLICATION

MINIMUM STILE IS OVERALL STILE WIDTH LESS GLASS STOP



RECTANGULAR GLASS STOP RECOMMENDED FOR STILE WIDTH LESS THAN 2 1/8"

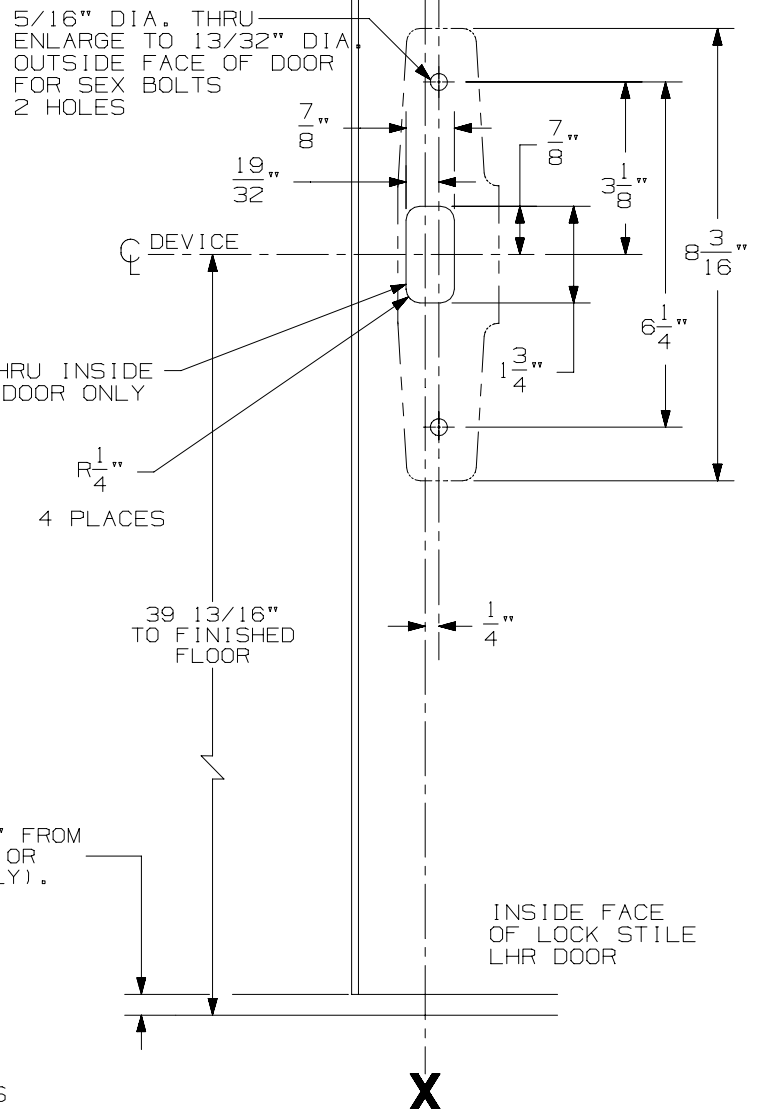
NOTE: REQUIRED DOOR UNDERCUT IS 1/4" FROM FINISHED FLOOR (PANIC & FIRE) OR 1/8" FROM THRESHOLD (PANIC ONLY).

NOTE: GLASS BEAD KIT AVAILABLE WHEN REQUIRED.

NOTE: LATCH CASE PREPARATION TO BE MADE AT INSTALLATION ON DOOR.

NOTE: IT IS RECOMMENDED THE MOUNTING HOLES BE PREPARED IN THE FIELD.

FOR OUTSIDE TRIM PREPARATION, WHEN REQUIRED, SEE TRIM TEMPLATE.



LHR SHOWN  
RHR OPPOSITE

## 33/3527A & 33/3527A-F Series Vertical Rod Device

# VON DUPRIN®

NOTES: SEE MASTER SHEET #10001 FOR SUGGESTED REINFORCING

TEMPLATE  
NUMBER:

10049\_a

DATE:  
05-15-13