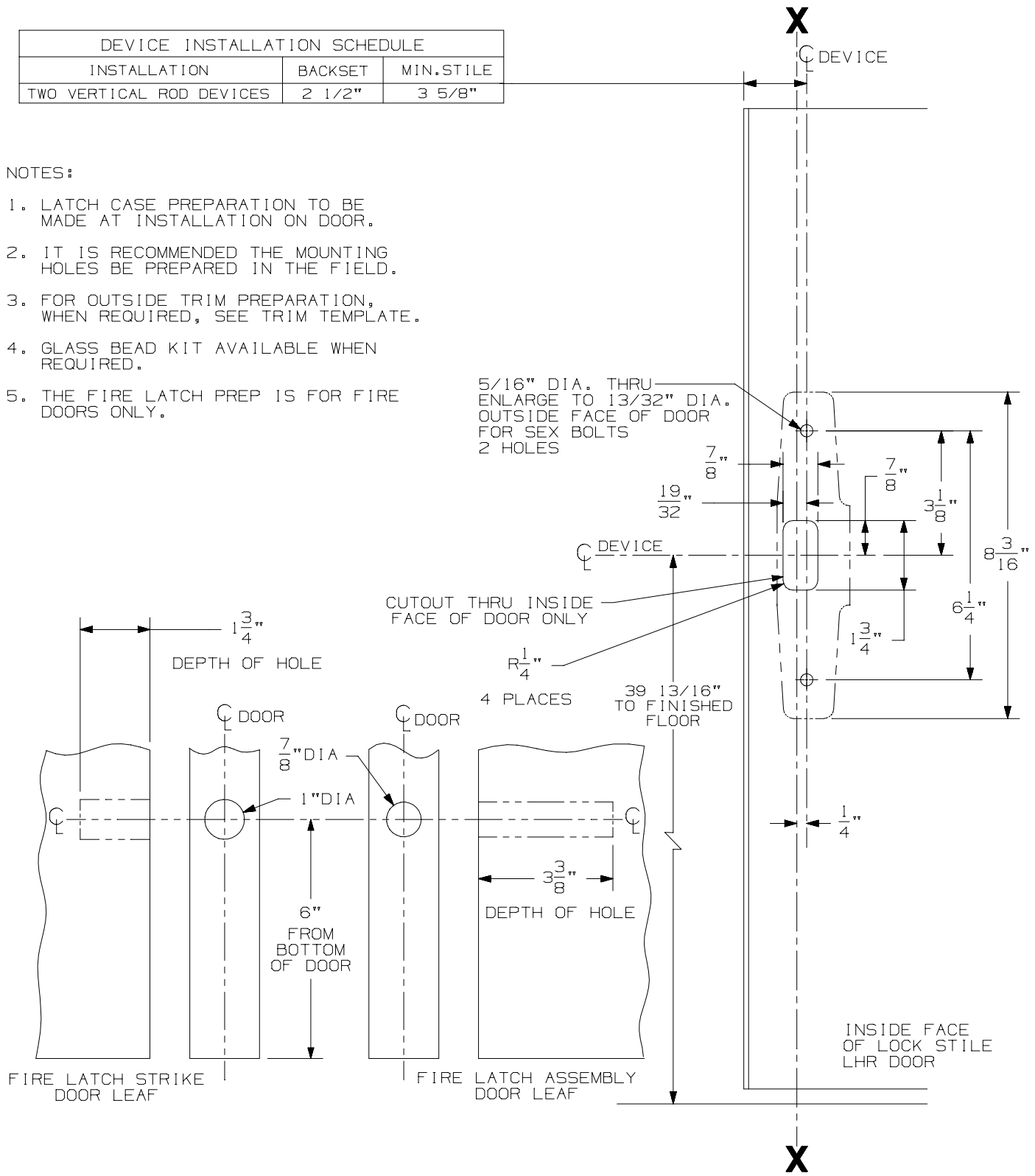


| DEVICE INSTALLATION SCHEDULE | | |
|------------------------------|---------|------------|
| INSTALLATION | BACKSET | MIN. STILE |
| TWO VERTICAL ROD DEVICES | 2 1/2" | 3 5/8" |

NOTES:

1. LATCH CASE PREPARATION TO BE MADE AT INSTALLATION ON DOOR.
2. IT IS RECOMMENDED THE MOUNTING HOLES BE PREPARED IN THE FIELD.
3. FOR OUTSIDE TRIM PREPARATION, WHEN REQUIRED, SEE TRIM TEMPLATE.
4. GLASS BEAD KIT AVAILABLE WHEN REQUIRED.
5. THE FIRE LATCH PREP IS FOR FIRE DOORS ONLY.



LHR SHOWN
RHR OPPOSITE

**33/3527A-F-LBR Series
Concealed Vertical Rod Device**

VON DUPRIN®

NOTES: SEE MASTER SHEET #10001 FOR SUGGESTED REINFORCING

TEMPLATE NUMBER:

10050_b

DATE:
03-26-14