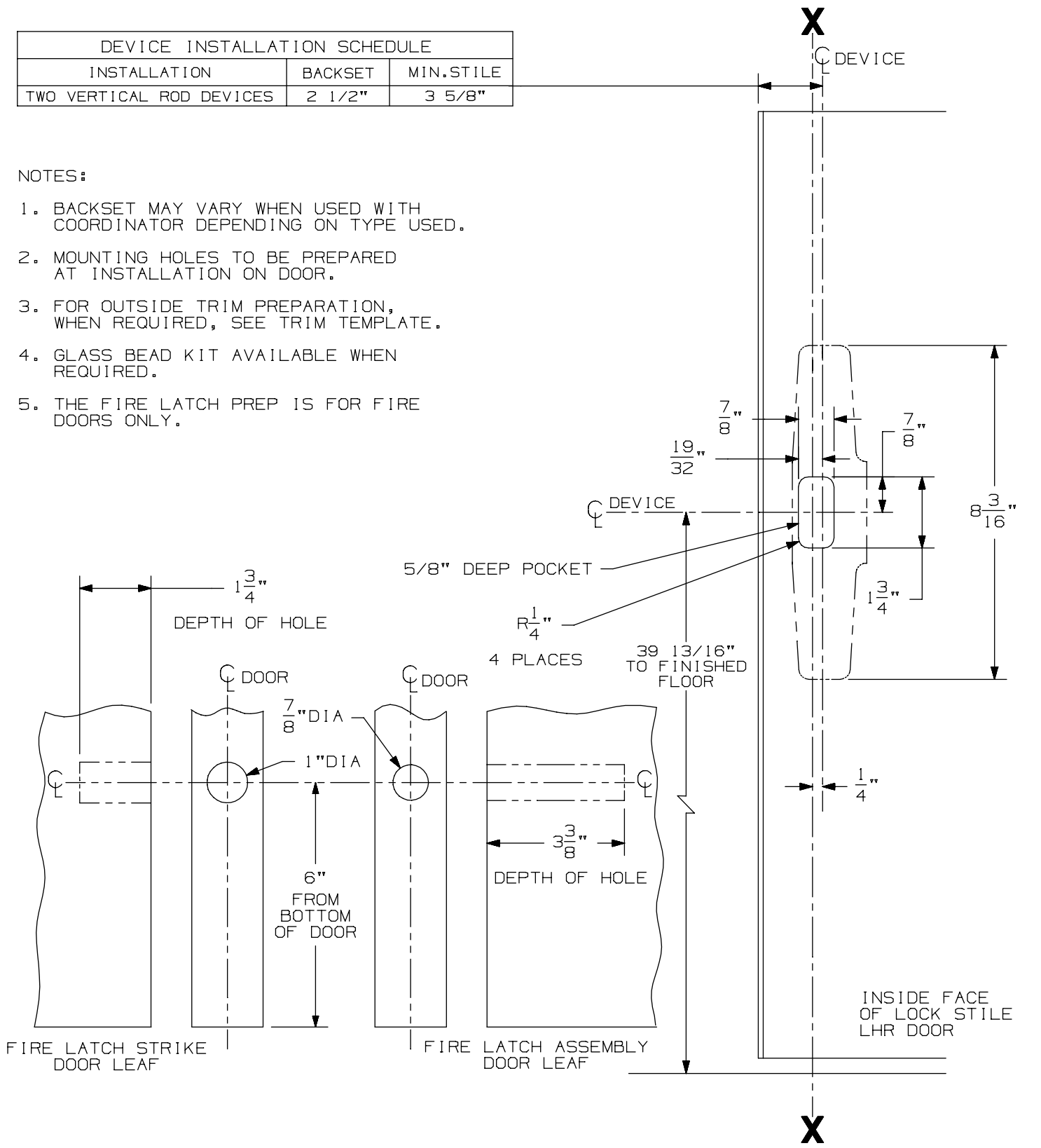


| DEVICE INSTALLATION SCHEDULE | | |
|------------------------------|---------|------------|
| INSTALLATION | BACKSET | MIN. STILE |
| TWO VERTICAL ROD DEVICES | 2 1/2" | 3 5/8" |

NOTES:

- BACKSET MAY VARY WHEN USED WITH COORDINATOR DEPENDING ON TYPE USED.
- MOUNTING HOLES TO BE PREPARED AT INSTALLATION ON DOOR.
- FOR OUTSIDE TRIM PREPARATION, WHEN REQUIRED, SEE TRIM TEMPLATE.
- GLASS BEAD KIT AVAILABLE WHEN REQUIRED.
- THE FIRE LATCH PREP IS FOR FIRE DOORS ONLY.



33/3527A-F-LBR Series
Vertical Rod Device (Wood Door)

VON DUPRIN®

NOTES: SEE MASTER SHEET #10001 FOR SUGGESTED REINFORCING

TEMPLATE NUMBER:

W10050_a

DATE:
05-29-13