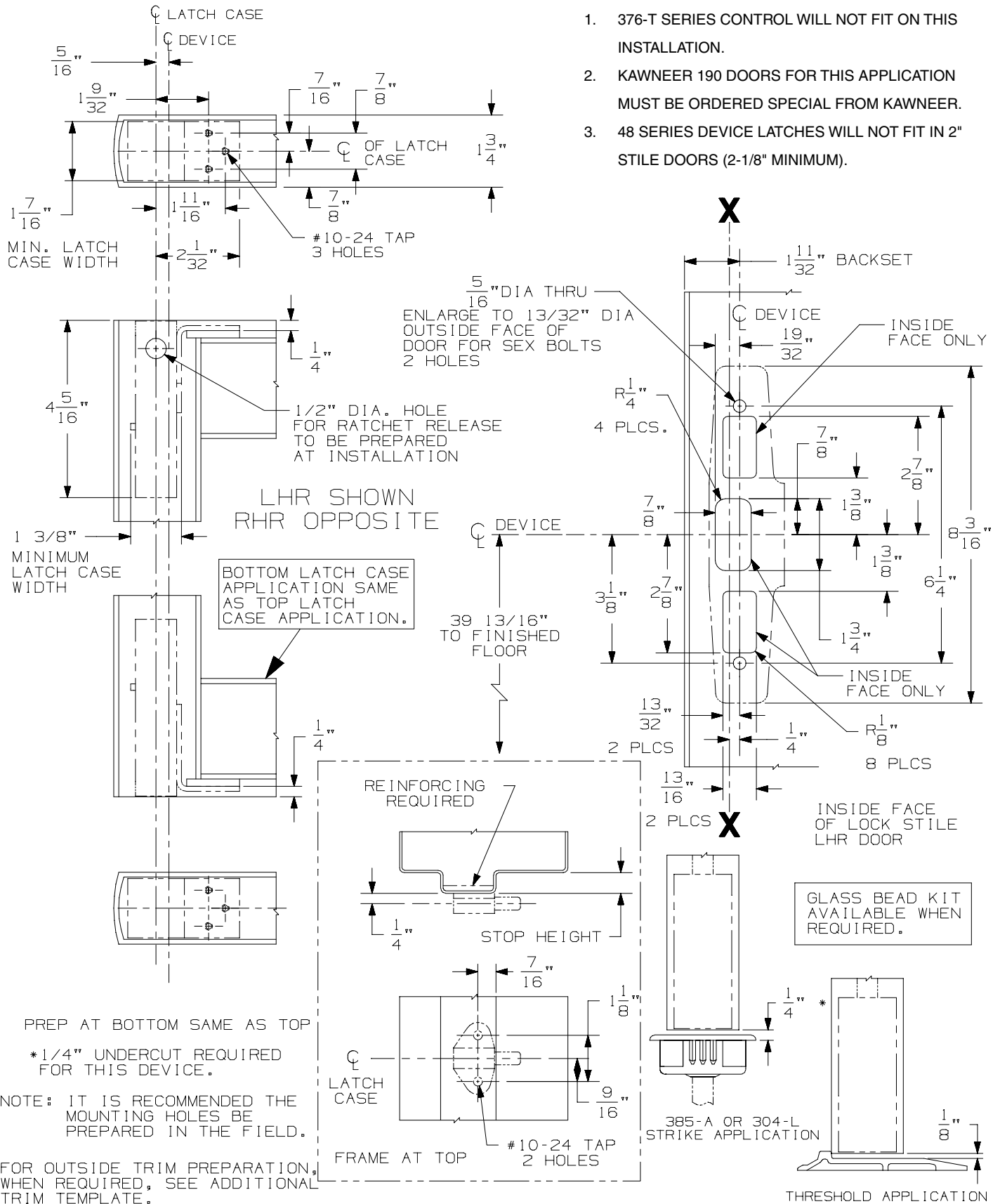


NOTES:

1. 376-T SERIES CONTROL WILL NOT FIT ON THIS INSTALLATION.
2. KAWNEER 190 DOORS FOR THIS APPLICATION MUST BE ORDERED SPECIAL FROM KAWNEER.
3. 48 SERIES DEVICE LATCHES WILL NOT FIT IN 2" STILE DOORS (2-1/8" MINIMUM).



33/3547A Series Concealed Vertical Rod Device for 2" or Less Stile Width

VON DUPRIN®

NOTES: SEE MASTER SHEET #10001 FOR SUGGESTED REINFORCING

TEMPLATE NUMBER:

10055_c

DATE: 07-18-16