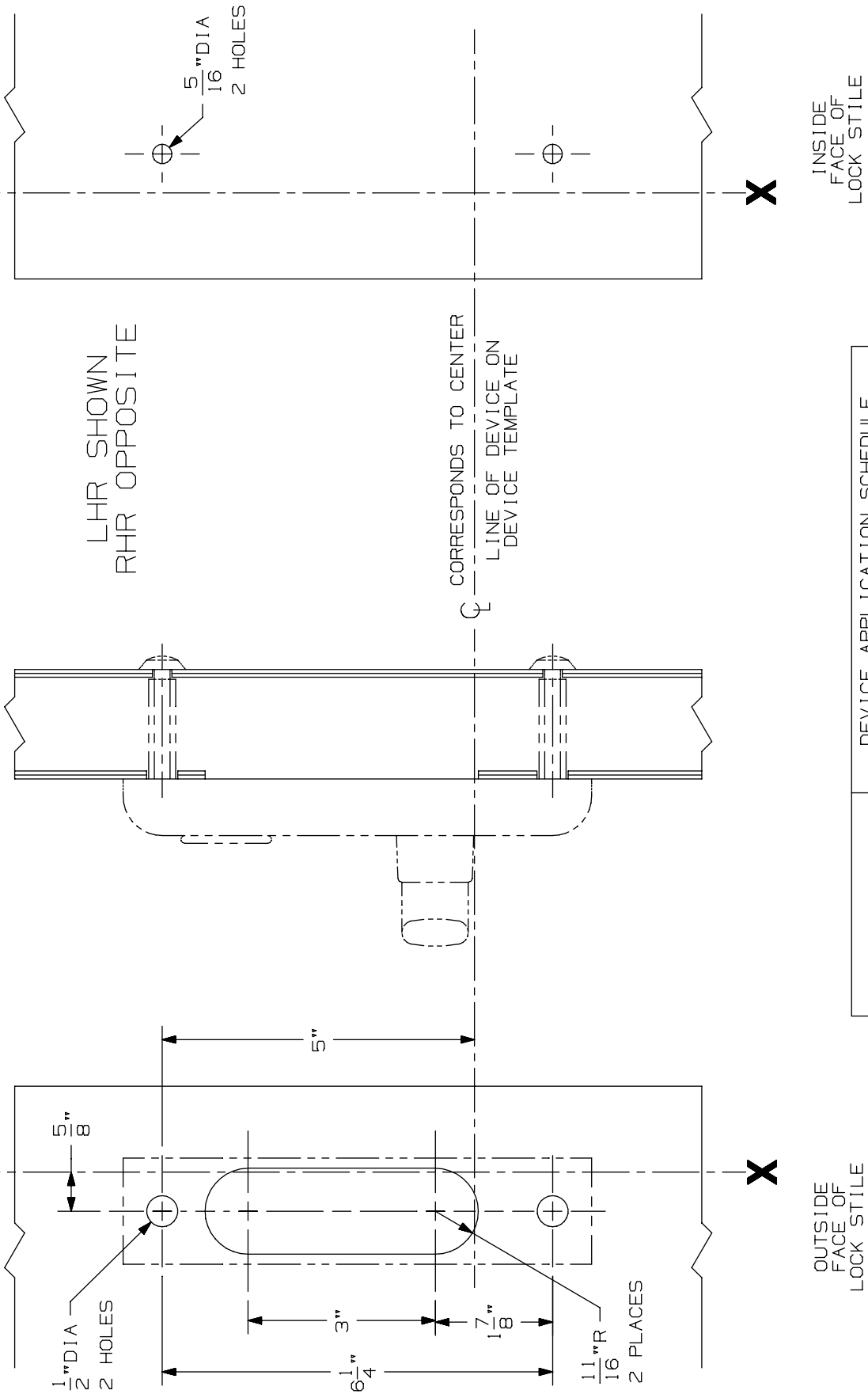


LINE X-X CORRESPONDS TO
LINE X-X ON DEVICE TEMPLATE



LHR SHOWN
RHR OPPOSITE

CORRESPONDS TO CENTER
LINE OF DEVICE ON
DEVICE TEMPLATE

OUTSIDE
FACE OF
LOCK STILE

INSIDE
FACE OF
LOCK STILE

DEVICE APPLICATION SCHEDULE	FOR CUTOUT ON INSIDE FACE OF DOOR SEE DEVICE TEMPLATE
5547-F VERTICAL ROD DEVICE	

371-L Control

VON DUPRIN®

NOTES: SEE MASTER SHEET #10001 FOR SUGGESTED REINFORCING

TEMPLATE
NUMBER:

40100_a

DATE:
05-28-13