

NOTES: SEE MASTER SHEET #10001 FOR SUGGESTED REINFORCING

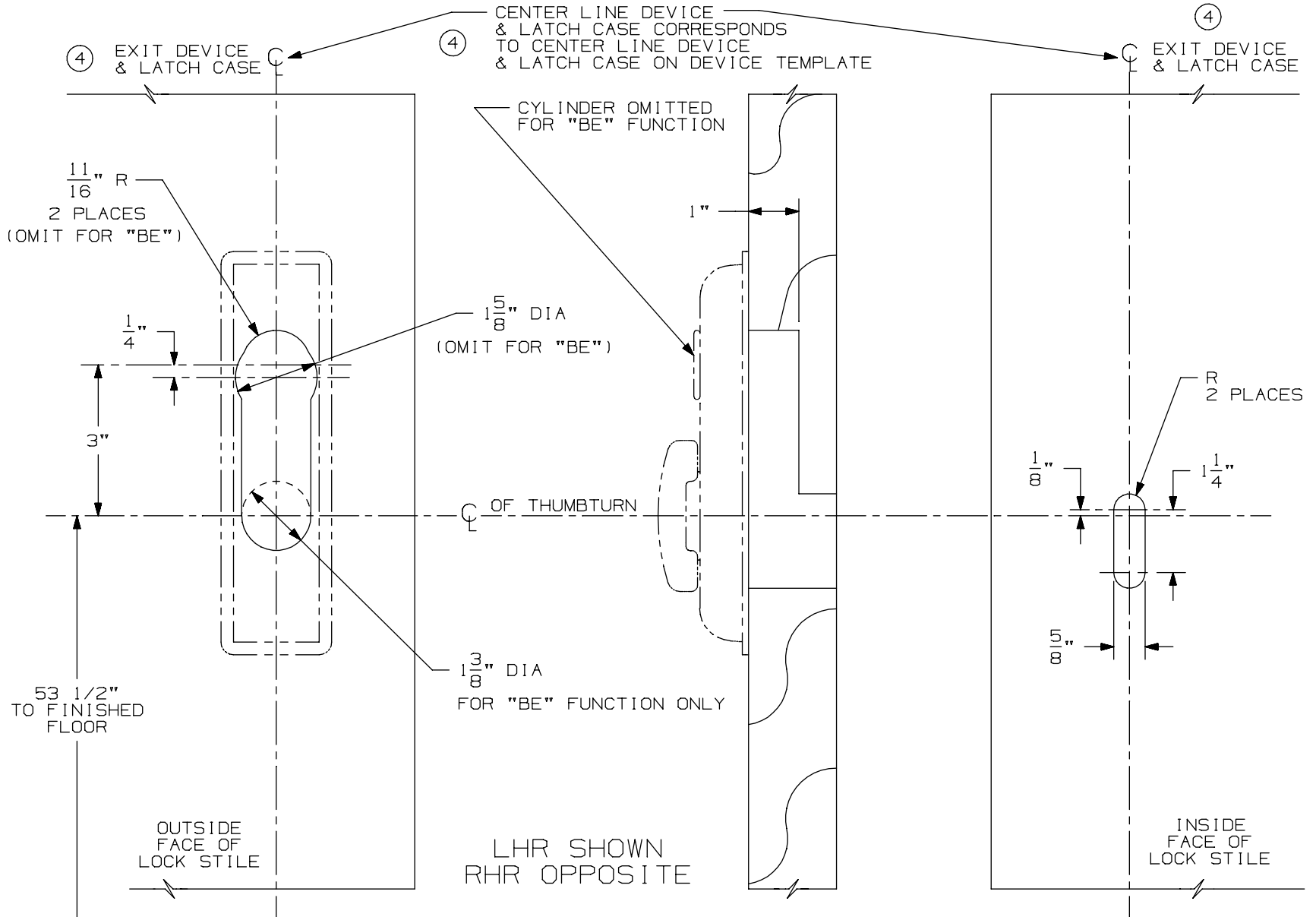
**374-T & 374-T-BE Control**  
(Wood Door)

TEMPLATE NUMBER:

**W40146\_a**

DATE:  
05-29-13

**VON DUPRIN®**



DEVICE APPLICATION SCHEDULE	
3327/3527	VERTICAL ROD DEVICE
9827/9927	SERIES VERT. DEVICE
2227	SERIES VERTICAL ROD DEVICE
3327A/3527A	VERTICAL ROD DEVICE

④ NOTE: MOUNTING HOLES TO BE PREPARED AT INSTALLATION ON DOOR.

FOR CUTOUTS ON INSIDE FACE OF DOOR SEE DEVICE TEMPLATE.