

NOTES: SEE MASTER SHEET #10001 FOR SUGGESTED REINFORCING

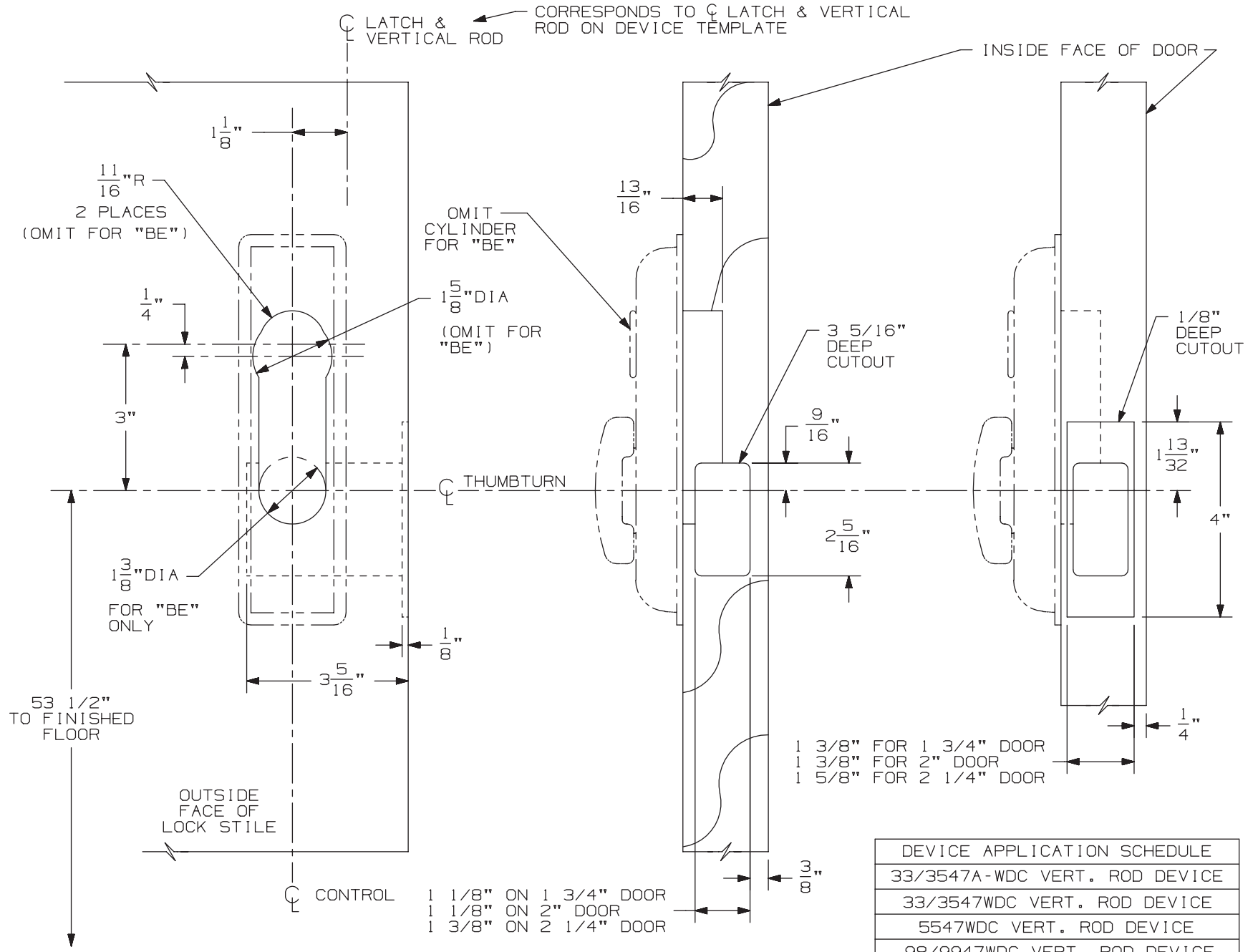
**376-T & 376-T-BE Control
(Wood Door)**

TEMPLATE NUMBER:

W40143_a

DATE:
05-29-13

VON DUPRIN®



NOTE: MOUNTING HOLES TO BE PREPARED AT INSTALLATION ON DOOR.

LHR SHOWN
RHR OPPOSITE

FOR CUTOUTS ON INSIDE FACE OF DOOR
SEE DEVICE TEMPLATE.

DEVICE APPLICATION SCHEDULE
33/3547A-WDC VERT. ROD DEVICE
33/3547WDC VERT. ROD DEVICE
5547WDC VERT. ROD DEVICE
98/9947WDC VERT. ROD DEVICE