

NOTES: SEE MASTER SHEET #10001 FOR SUGGESTED REINFORCING

TEMPLATE NUMBER:

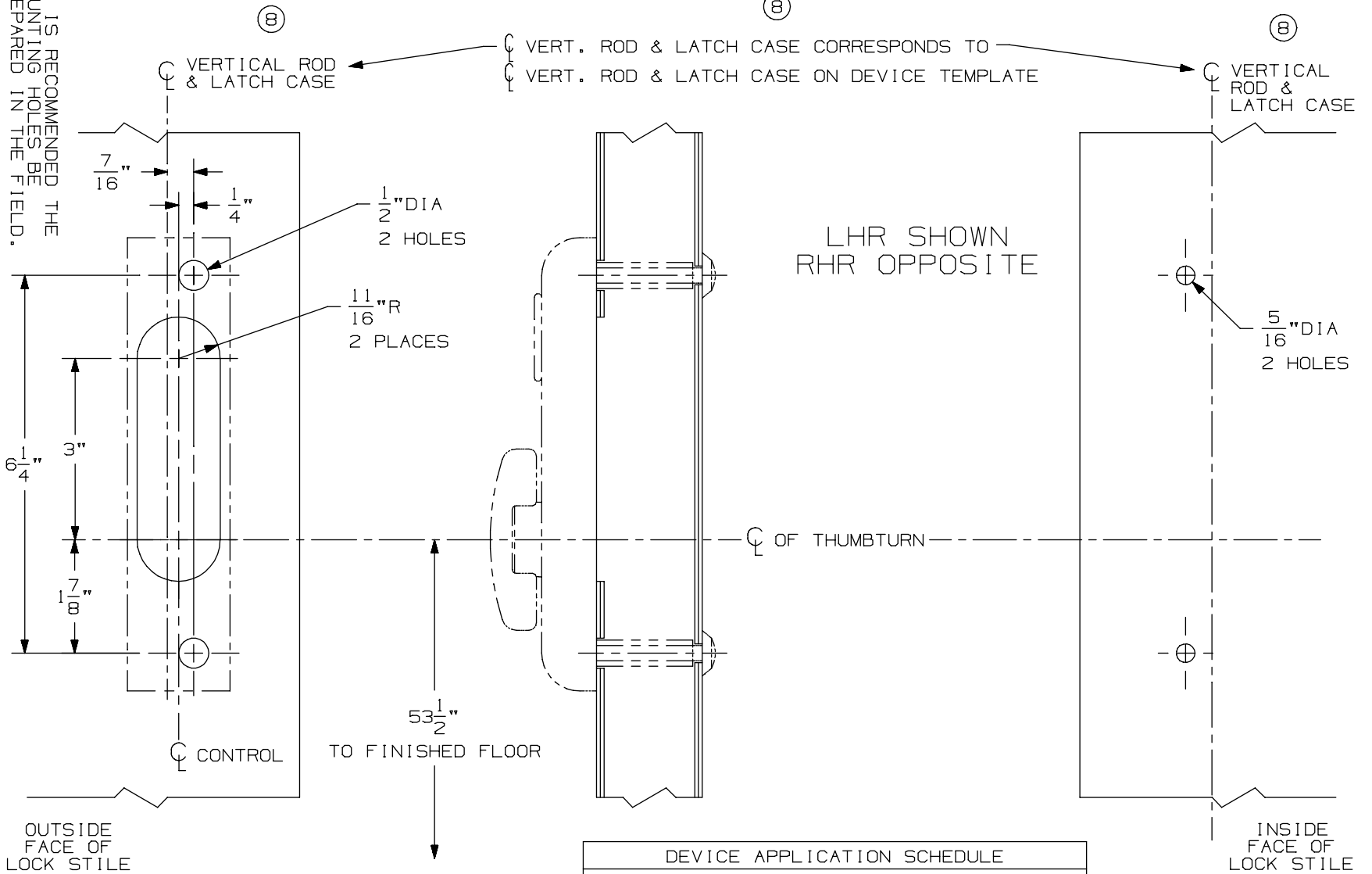
40114_a

DATE: 05-28-13

376-T Control

VON DUPRIN

IT IS RECOMMENDED THE MOUNTING HOLES BE PREPARED IN THE FIELD.



(8) * NOT TO BE USED WITH 1 1/16" LATCH CASE BACKSET ON BULLNOSE EDGE DOORS WITH WEATHERSTRIP CHANNEL.

(8)
(8)

DEVICE APPLICATION SCHEDULE
5547/5547-F VERT. ROD DEVICE
8847-F VERT. ROD DEVICE
* 3347/3547 VERT. ROD DEVICE
3347-F/3547-F VERT. ROD DEVICE
* 3347A/3547A VERT. ROD DEVICE
3347A-F/3547A-F VERT. ROD DEVICE
9847/9947 VERT. ROD DEVICE
9847-F/9947-F VERTICAL ROD DEVICE