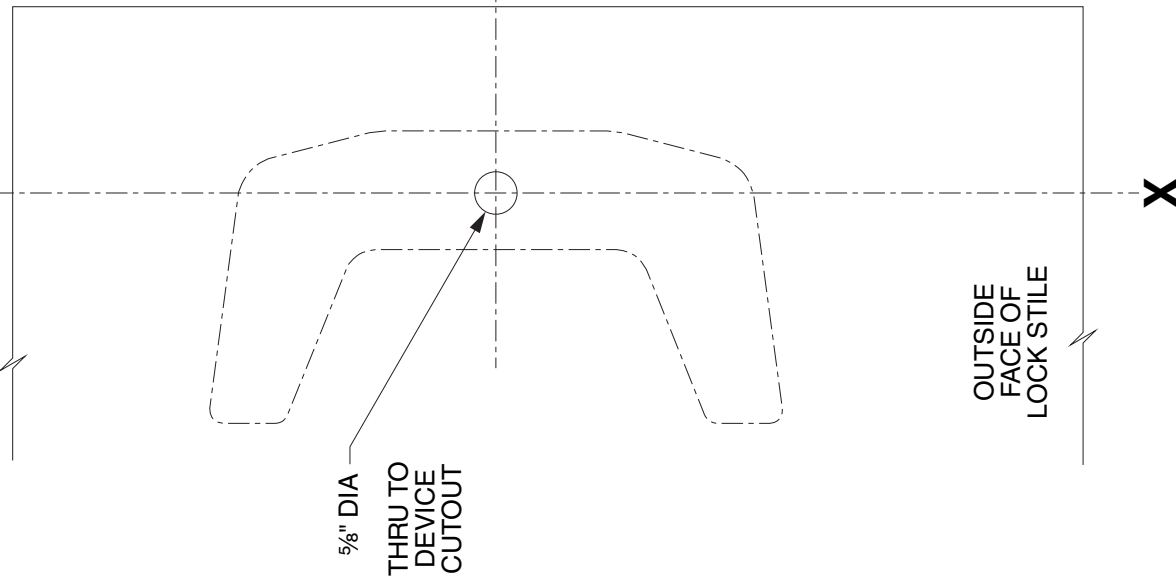


LINE X-X CORRESPONDS TO
LINE X-X ON DEVIEC TEMPLATE

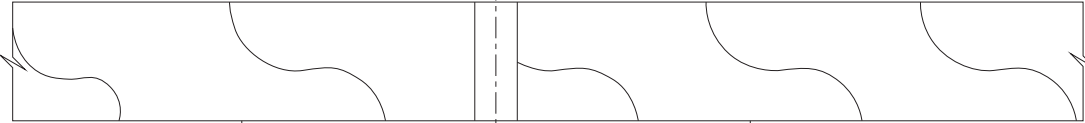
X



OUTSIDE
FACE OF
LOCK STILE

CORRESPONDS TO CENTER
LINE OF DEVICE ON
DEVICE TEMPLATE

CL



LHR SHOWN
RHR OPPOSITE

FOR CUTOUT ON INSIDE FACE OF DOOR SEE DEVICE TEMPLATE	DEVICE APPLICATION SCHEDULE
	33A/35A RIM DEVICE
	3327A/3527A VERTICAL ROD DEVICE 33/3547A-WDC VERTICAL ROD DEVICE

NOTE: MOUNTING HOLES TO BE PREPARED
AT INSTALLATION ON DOOR.

386NL Trim
(Wood Door)

VON DUPRIN®

NOTES: SEE MASTER SHEET #10001 FOR SUGGESTED REINFORCING

TEMPLATE
NUMBER:

W20008_c

DATE:
05-31-13