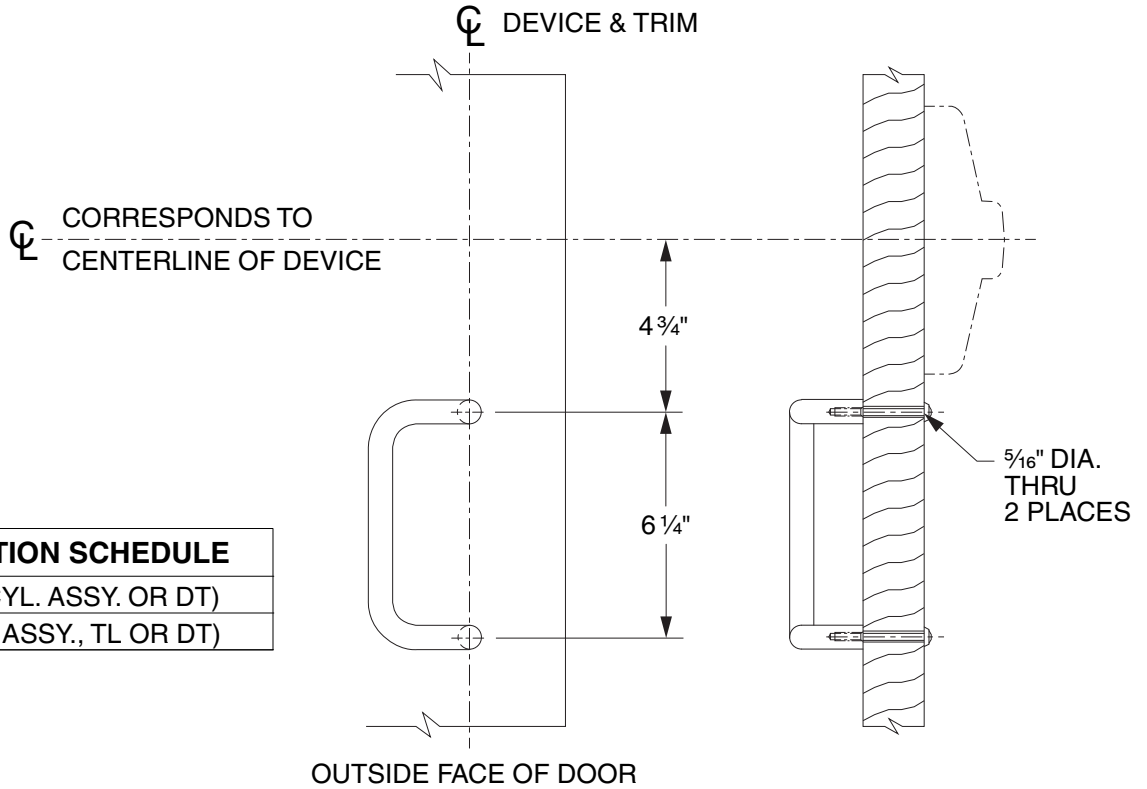


392-6 (PULL BELOW CENTER)

FOR 388 CYLINDER ASSY, TL OR DT APPLICATIONS

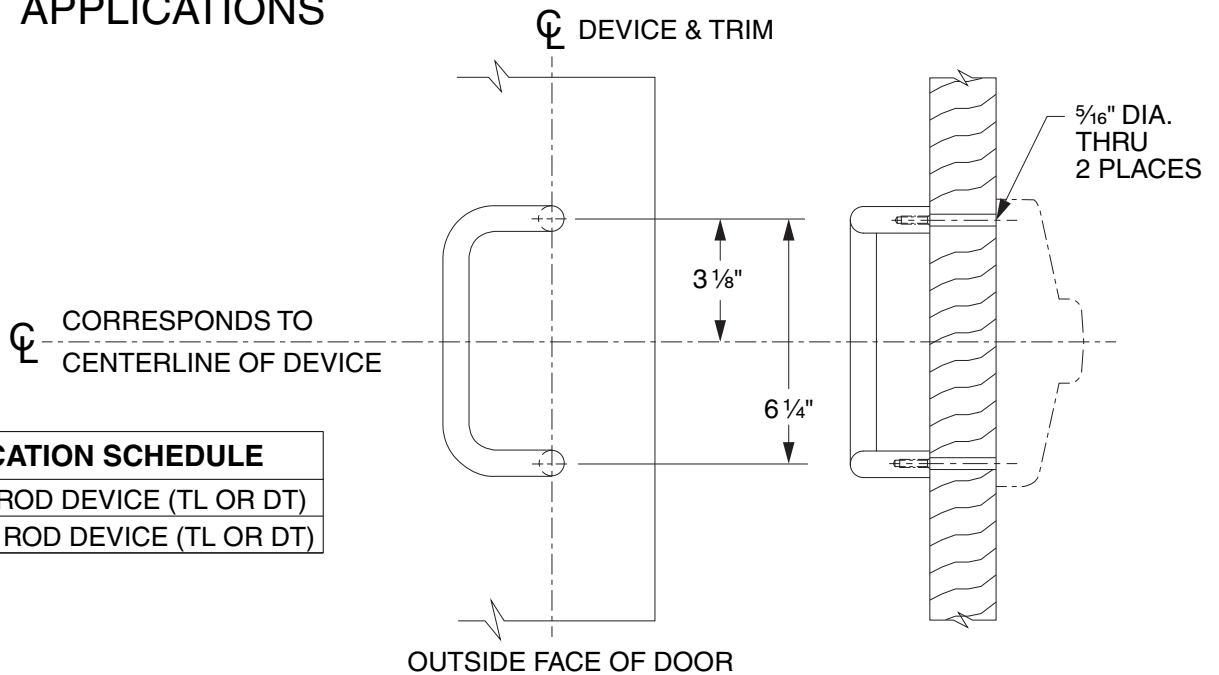


DEVICE APPLICATION SCHEDULE
33A/35A RIM (388 CYL. ASSY. OR DT)
33/3527A (388 CYL. ASSY., TL OR DT)

LHR SHOWN
RHR OPPOSITE

392-6 (PULL ON CENTER)

FOR TL OR DT APPLICATIONS



DEVICE APPLICATION SCHEDULE
33/3527A VERTICAL ROD DEVICE (TL OR DT)
33/3547A-WDC VERT. ROD DEVICE (TL OR DT)

LHR SHOWN
RHR OPPOSITE

392-6 Pull
(Wood Door)

VON DUPRIN®

NOTES: SEE MASTER SHEET #10001 FOR SUGGESTED REINFORCING

TEMPLATE NUMBER:

W20454_c

DATE:
05-31-13