

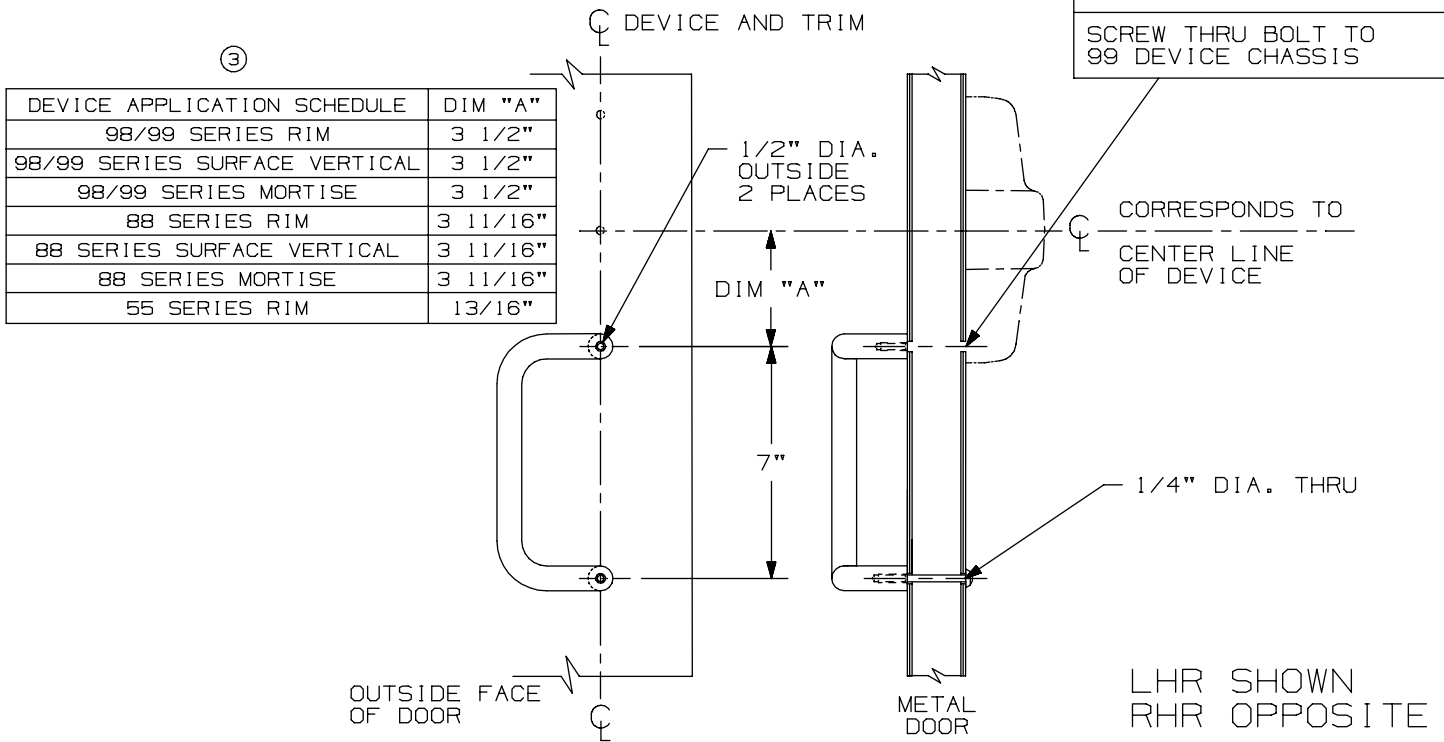
392-7 (PULL BELOW CENTER)

FOR NL, TL OR DT APPLICATIONS

DRILL 1/4" DIA. C'SINK TO 82° FOR 88 & 55 SERIES DEVICES

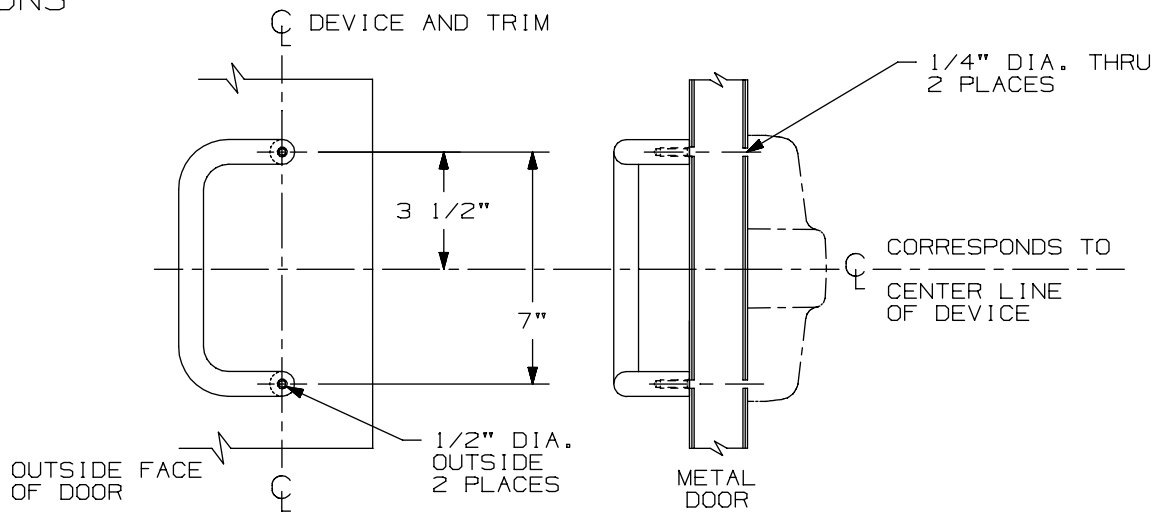
DRILL 1/4" DIA. THRU FOR 99 SERIES DEVICES

SCREW THRU BOLT TO 99 DEVICE CHASSIS



392-7 (PULL ON CENTER)

FOR NL, TL OR DT APPLICATIONS



DEVICE APPLICATION SCHEDULE	
98/99 SERIES RIM (DT OR NL)	
98/99 SERIES SURFACE VERTICAL (DT, NL OR TL)	
98/99 SERIES MORTISE (DT OR NL)	
98/99 SERIES CONCEALED VERTICAL (DT, NL OR TL)	

392-7 Pull

VON DUPRIN®

NOTES: SEE MASTER SHEET #10001 FOR SUGGESTED REINFORCING

TEMPLATE NUMBER:

20447_a

DATE:
05-23-13