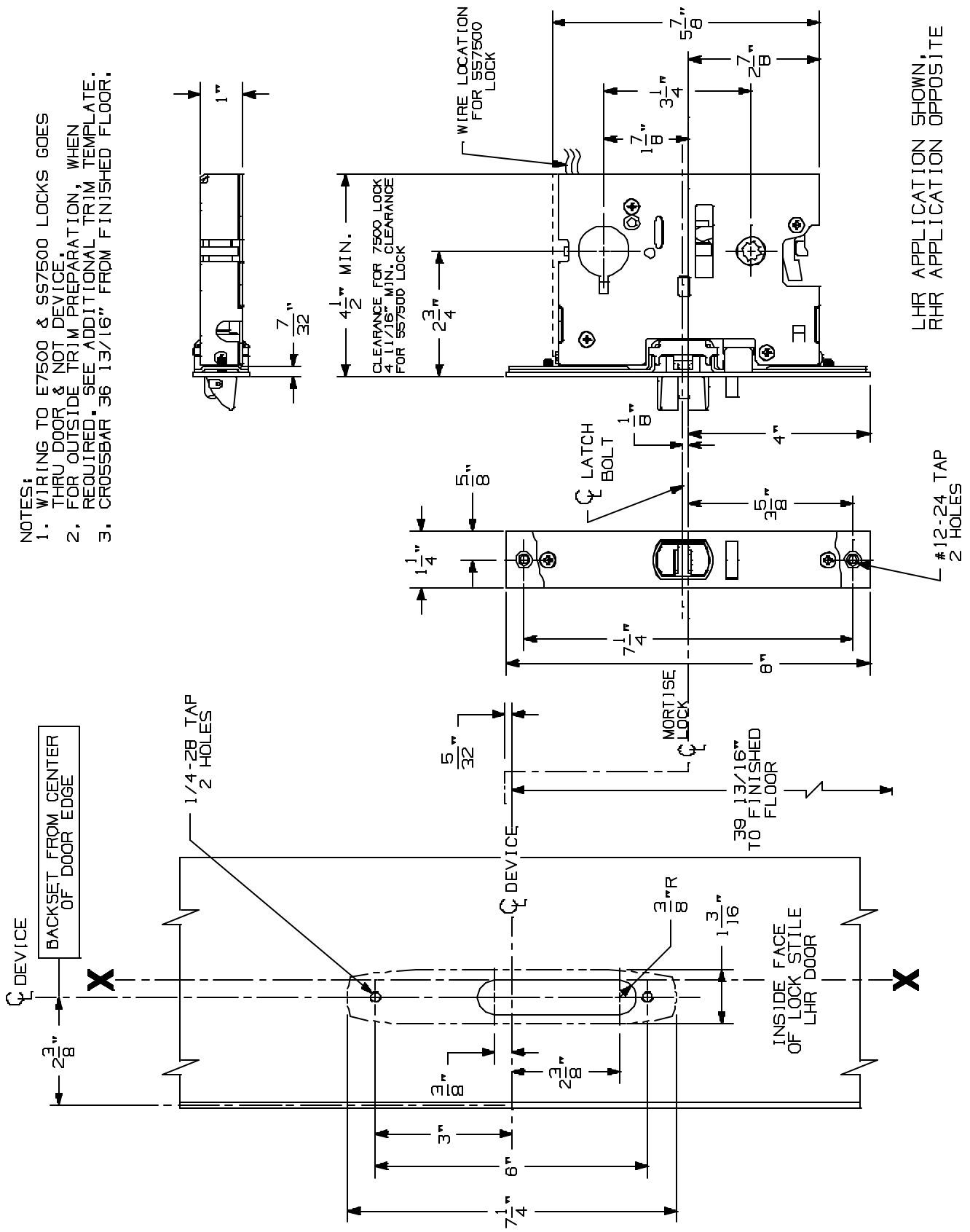


- NOTES:
1. WIRING TO E7500 & S97500 LOCKS GOES THRU DOOR & NOT DEVICE.
  2. FOR OUTSIDE TRIM PREPARATION, WHEN REQUIRED. SEE ADDITIONAL TRIM TEMPLATE.
  3. CROSSBAR 36 13/16" FROM FINISHED FLOOR.



LHR APPLICATION SHOWN,  
RHR APPLICATION OPPOSITE

### 5575/5575-F Mortise Lock Devices

**VON DUPRIN®**

NOTES: SEE MASTER SHEET #10001 FOR SUGGESTED REINFORCING

TEMPLATE NUMBER: 10068\_a

DATE: 05-15-13