

NOTES: SEE MASTER SHEET #10001 FOR SUGGESTED REINFORCING

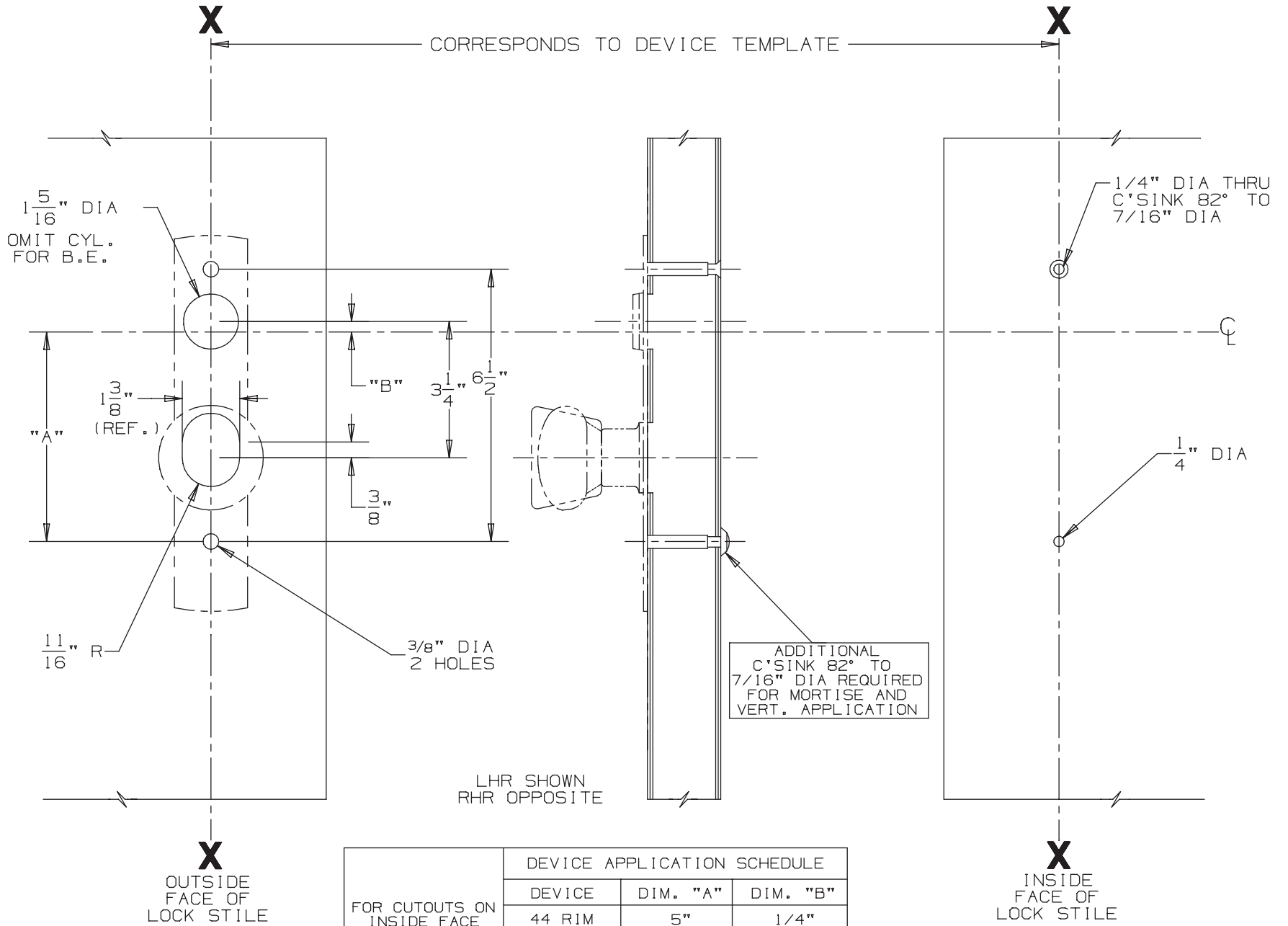
606 K & 606 K-BE Trim for 44 Rim & 88 Rim, Mortise, Vertical Devices

TEMPLATE NUMBER:

20061_a

DATE: 05-23-13

VON DUPRIN®



FOR CUTOUTS ON INSIDE FACE OF DOOR SEE DEVICE TEMPLATE	DEVICE APPLICATION SCHEDULE		
	DEVICE	DIM. "A"	DIM. "B"
	44 RIM	5"	1/4"
	88 RIM	5"	1/4"
	88 MORT.	3 1/4"	2"
	8827	3 1/4"	1 3/4"