

606 K-DT Trim for 44 Rim & 88 Rim,
Mortise, & Vertical Devices

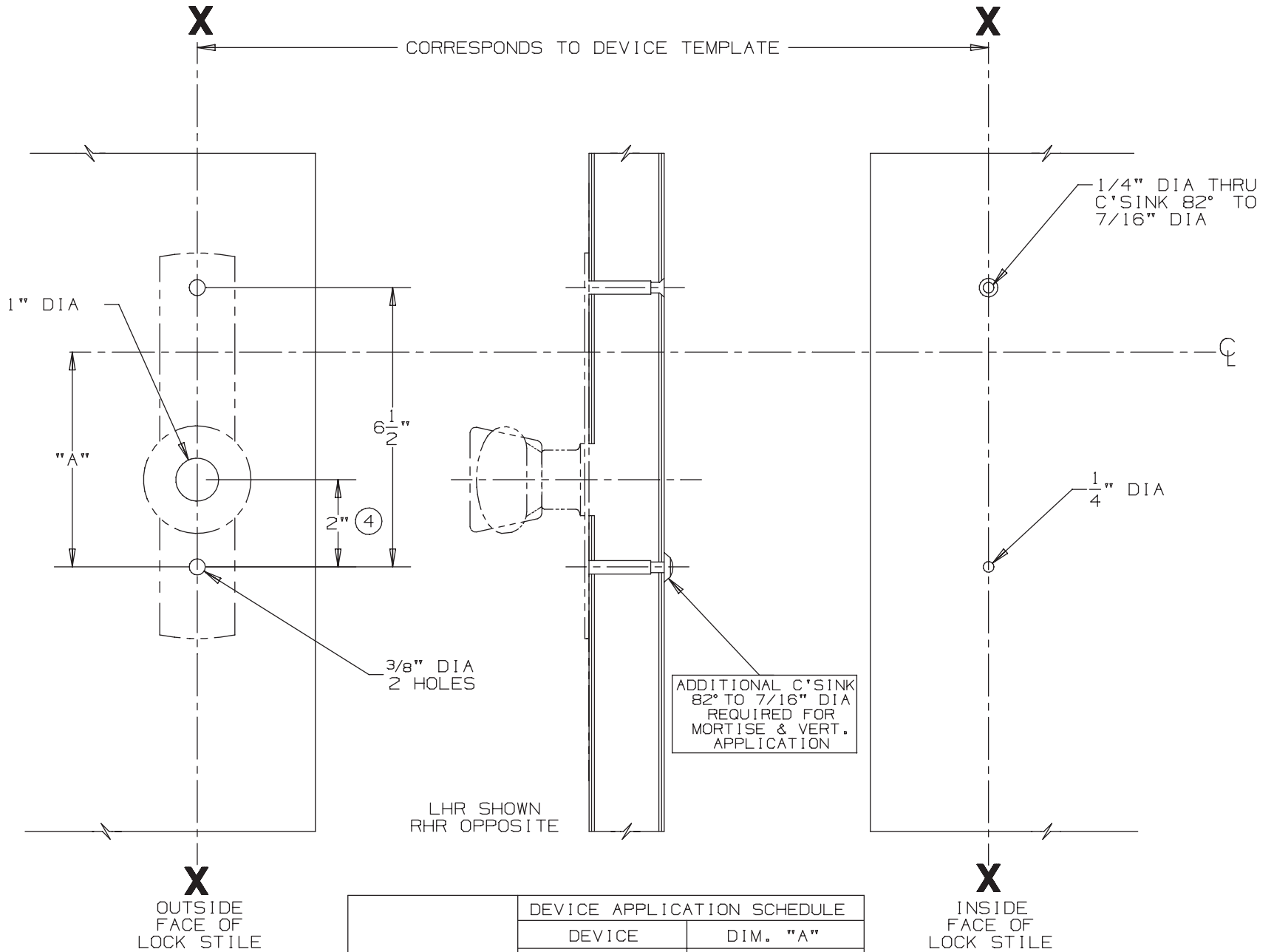
NOTES: SEE MASTER SHEET #10001 FOR SUGGESTED REINFORCING

TEMPLATE
NUMBER:

20059_a

DATE:
05-23-13

VON DUPRIN[®]



	DEVICE APPLICATION SCHEDULE	
	DEVICE	DIM. "A"
FOR CUTOUTS ON INSIDE FACE OF DOOR SEE DEVICE TEMPLATE	44 RIM	5"
	88 RIM	5"
	88 MORTISE	3 1/4"
	88 VERTICAL	3 1/4"

(4)