

NOTES: SEE MASTER SHEET #10001 FOR SUGGESTED REINFORCING

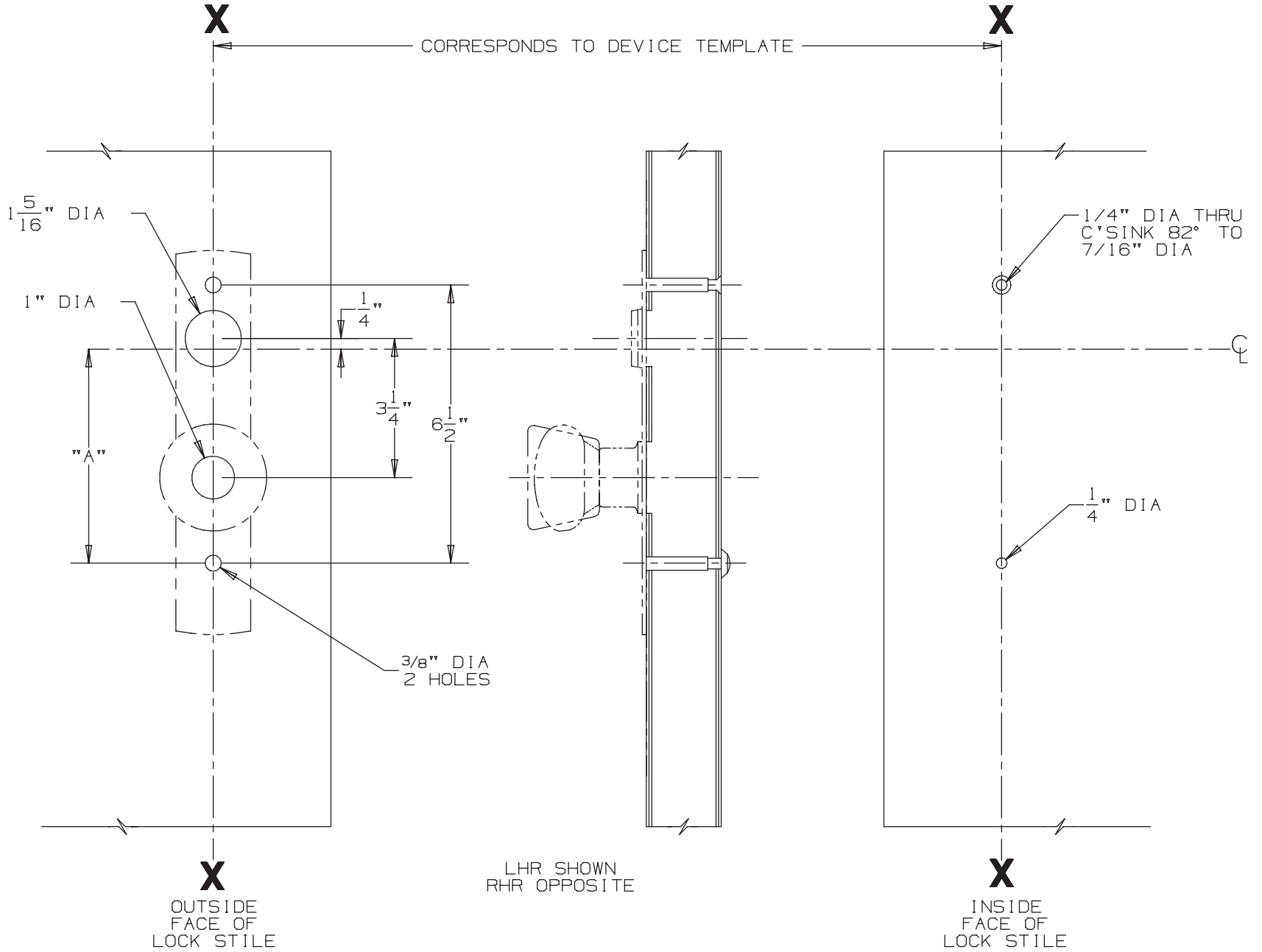
**606 KR Trim
(Rigid Knob)**

VON DUPRIN®

TEMPLATE
NUMBER:

20063_a

DATE:
05-23-13



FOR CUTOUTS ON INSIDE FACE OF DOOR SEE DEVICE TEMPLATE	DEVICE APPLICATION SCHEDULE	
	DEVICE	DIM. "A"
	88 RIM	5"