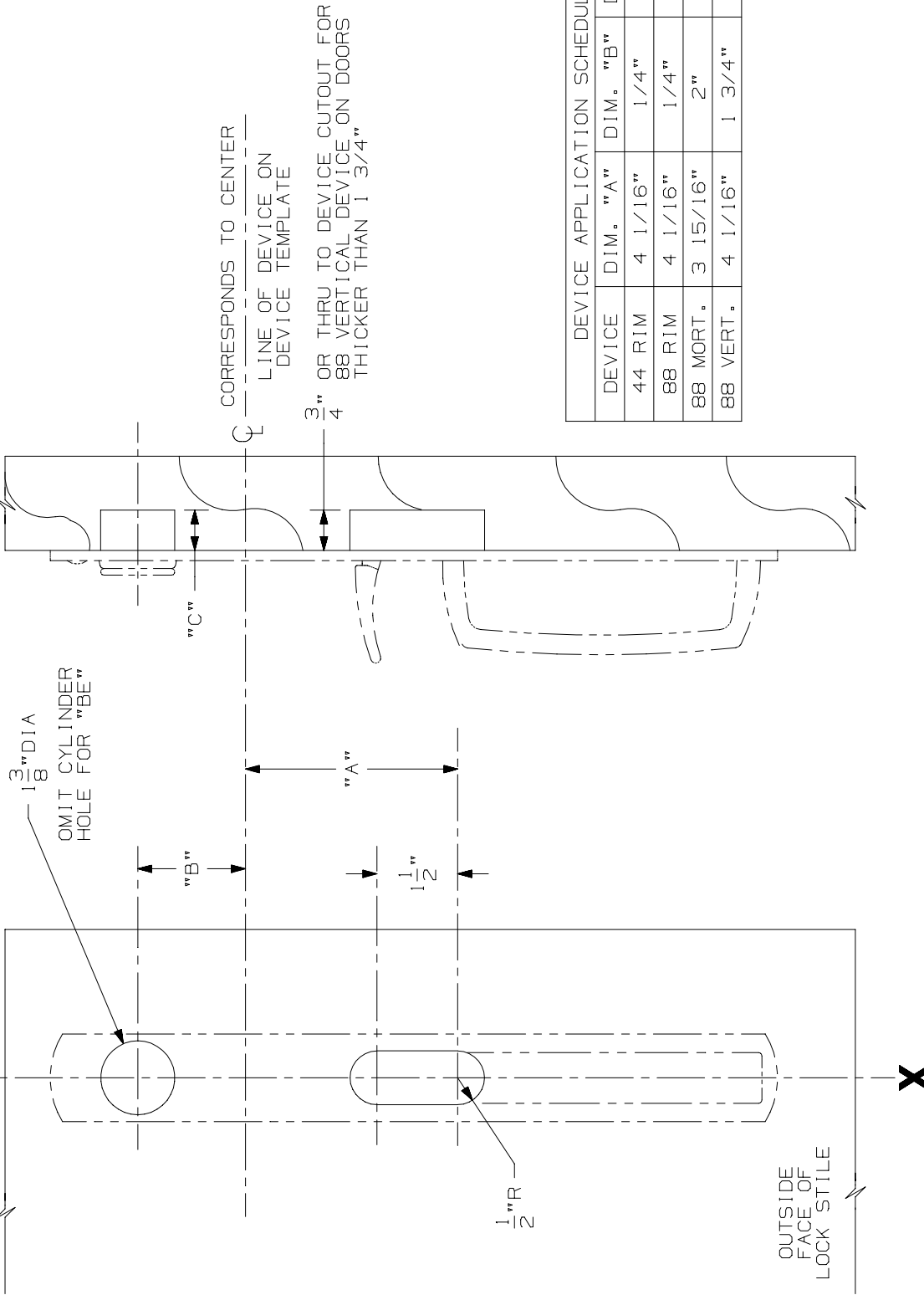


LINE X-X CORRESPONDS TO
LINE X-X ON DEVICE TEMPLATE



CORRESPONDS TO CENTER
LINE OF DEVICE ON
DEVICE TEMPLATE

3" OR THRU TO DEVICE CUTOUT FOR
88 VERTICAL DEVICE ON DOORS
THICKER THAN 1 3/4"

DEVICE APPLICATION SCHEDULE			
DEVICE	DIM. "A"	DIM. "B"	DIM. "C"
44 RIM	4 1/16"	1/4"	THRU
88 RIM	4 1/16"	1/4"	THRU
88 MORT.	3 15/16"	2"	3/4"
88 VERT.	4 1/16"	1 3/4"	THRU

LHR SHOWN
RHR OPPOSITE

NOTE: MOUNTING HOLES TO BE PREPARED
AT INSTALLATION ON DOOR.

FOR CUTOUTS ON INSIDE FACE OF DOOR
SEE DEVICE TEMPLATE.

608TP & 608TP-BE Trim (Wood Door)

VON DUPRIN®

NOTES: SEE MASTER SHEET #10001 FOR SUGGESTED REINFORCING

TEMPLATE
NUMBER:

W20069_a

DATE:
05-29-13