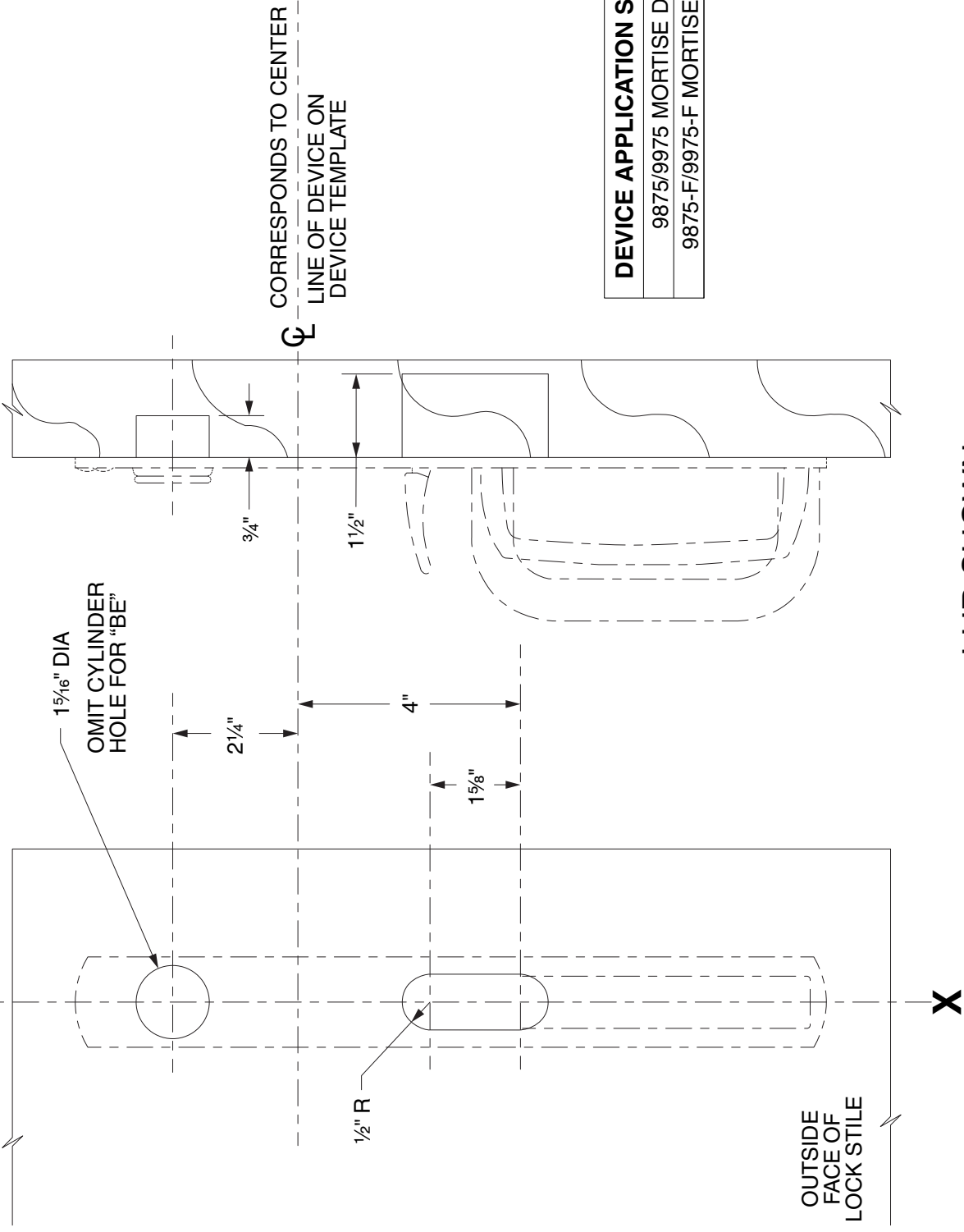


LINE X-X CORRESPONDS TO  
LINE X-X ON DEVICE TEMPLATE



CORRESPONDS TO CENTER  
LINE OF DEVICE ON  
DEVICE TEMPLATE

DEVICE APPLICATION SCHEDULE
9875/9975 MORTISE DEVICE
9875-F/9975-F MORTISE DEVICE

LHR SHOWN  
RHR OPPOSITE

NOTE: MOUNTING HOLES TO BE PREPARED  
AT INSTALLATION ON DOOR.

FOR CUTOUTS ON INSIDE FACE OF DOOR  
SEE DEVICE TEMPLATE.

696TP, 697TP, 696TP-BE, & 697TP-BE Trim  
(Wood Door)

**VON DUPRIN®**

NOTES: SEE MASTER SHEET #10001 FOR SUGGESTED REINFORCING

TEMPLATE  
NUMBER:

W20103\_c

DATE:  
05-31-13