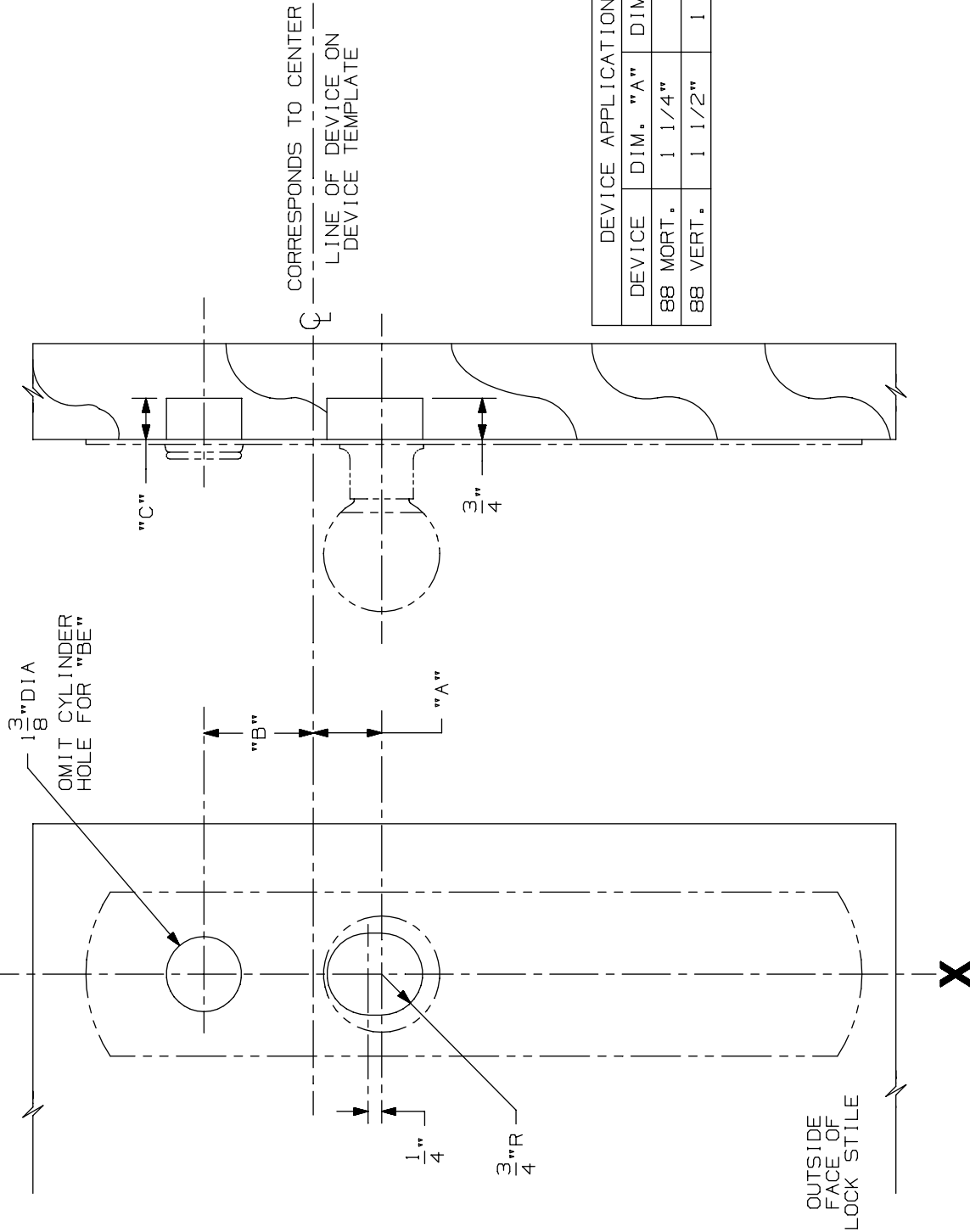


LINE X-X CORRESPONDS TO
LINE X-X ON DEVICE TEMPLATE



DEVICE APPLICATION SCHEDULE			
DEVICE	DIM. "A"	DIM. "B"	DIM. "C"
88 MORT.	1 1/4"	2"	3/4"
88 VERT.	1 1/2"	1 3/4"	THRU

LHR SHOWN
RHR OPPOSITE

NOTE: MOUNTING HOLES TO BE PREPARED
AT INSTALLATION ON DOOR.

FOR CUTOUTS ON INSIDE FACE OF DOOR
SEE DEVICE TEMPLATE.

880K & 880K-BE Trim (Wood Door)

VON DUPRIN®

NOTES: SEE MASTER SHEET #10001 FOR SUGGESTED REINFORCING

TEMPLATE
NUMBER:

W20261_a

DATE:
05-29-13