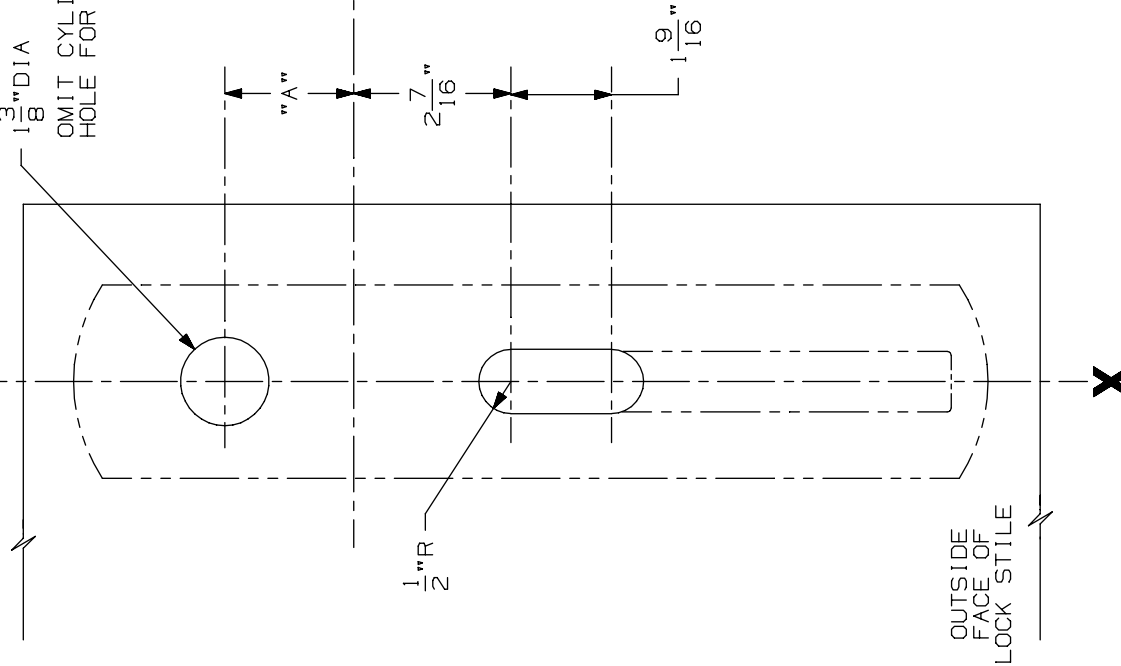


LINE X-X CORRESPONDS TO  
LINE X-X ON DEVICE TEMPLATE

$\frac{3}{8}$ " DIA  
OMIT CYLINDER  
HOLE FOR "BE"



CORRESPONDS TO CENTER  
LINE OF DEVICE ON  
DEVICE TEMPLATE

SLOT THRU TO MORTISE LOCK CAVITY  
FOR 88 MORT. DEVICE.  
SLOT THRU TO DEVICE "CUTOUT FOR  
88 VERT. DEVICE.

DEVICE APPLICATION SCHEDULE		
DEVICE	DIM. "A"	DIM. "B"
88 MORT.	2"	$\frac{3}{4}$ "
88 VERT.	$1\frac{3}{4}$ "	THRU

LHR SHOWN  
RHR OPPOSITE

FOR CUTOUTS ON INSIDE FACE OF DOOR  
SEE DEVICE TEMPLATE.

NOTE: MOUNTING HOLES TO BE PREPARED  
AT INSTALLATION ON DOOR.

880TP & 880TP-BE Trim (Wood Door)

**VON DUPRIN**®

NOTES: SEE MASTER SHEET #10001 FOR SUGGESTED REINFORCING

TEMPLATE  
NUMBER:

W20260\_a

DATE:  
05-29-13